

Lebanon County honors top milk-makers

BY DONNA TOMMELLEO Improvement Association convened, Tuesday, to honor dairy Lebanon County Dairy Herd farmers who have made



Raymond, left, and Marlin Getz of Myerstown, accept their award for county's high herd for fat. The Getz' 54 Holsteins pumped out an average of 739 pounds of butterfat on 19,639 pounds of milk.



The new slate of Lebanon County DHIA directors include from left: Ernie Hostetter, Annville; Galen Bollinger, Fredericksburg; Marlin Getz, Myerstown; Ken Mase, Lebanon; and Hershey Bare, Lebanon.

production gains. In addition, the group presented a special service award to Lebanon County Extension Dairy Agent Newton Bair, who also reported on the county's progress.

"For the first time ever, the county has exceeded 16,000 pounds of milk per cow. We have more than 10,000 cows on test," Bair said.

However, in light of the crippling surplus in the nation which will probably result in lower milk prices, Bair was quick to comment.

"I just hope we don't produce ourselves out of a job. But it is gratifying, year after year, to increase our efficiency as the number of cows on test increase," he said.

When the county's DHIA began 53 years ago, less than 400 cows

(Turn to Page A33)

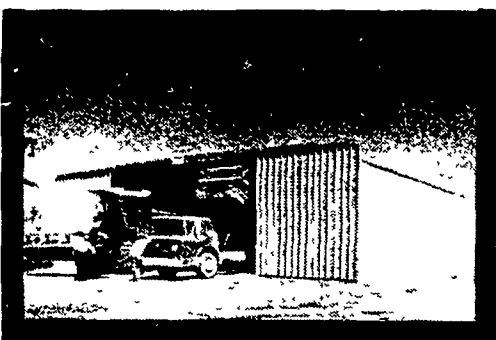


Lebanon County Extension Agent Newton Bair, left, accepts an award from Lebanon DHIA president Hershey Bare and county dairy princess Tammy Tyson. Bair was honored for his service and dedication to the county's dairy producers.

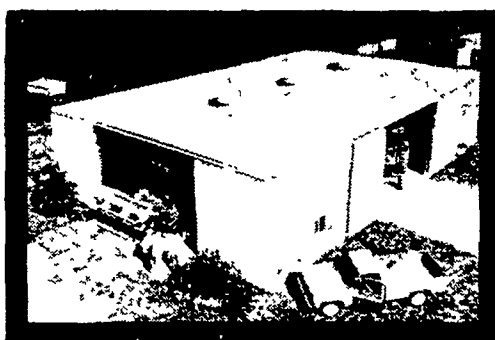
BY F
SI
NEW!
Cumberk
Improver
brought
County's
evening o
and the
special a
Ferma
at the bar
awards
ceremoni
Springs,
the high
productio
His 40
Holsteins
pounds (r
recorded
average
and a 3.8
The aw
butterfat
cow pro
pounds o
milk and
Landis w
county's
productio
last year
Sunda
Carlisle,
milk pro
20,140 p
Vallilea I

Formatted Buildings by Butler

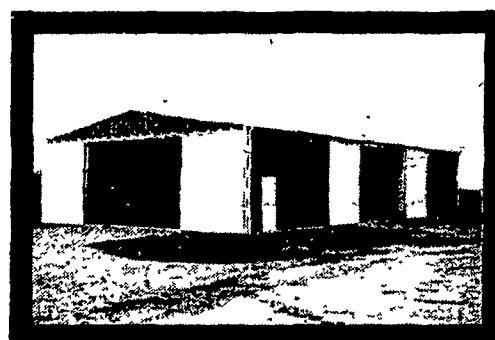
FARMER'S CHOICE



FARMSTED I



FARMSTED II



AG MASTER 2:12



IDEAL FOR GRAIN AND MACHINERY STORAGE

BUY OR LEASE

— FARMER'S CHOICE
1982 FALL INCENTIVE
BUTLER BUILDING
YOUR CHOICE
We will extend an extra 7%
standard farm buildings on
Farmsted-II, Ag-Master
Ag Master 2:1.

OR
CHOOSE lower lease pay
subsidize interest rates to
leases, or 14.83% on financing

SEE YOUR AGRI-BUSINESS
"Terms and Conditions of Program"

PROGRAM ENDS DECEMBER 31, 1982

BUTLER MFG. CO.

Attn. P.E. Hess
Box 337, Oxford, PA 19363
Dealer Inquiries Available in: Pennsylvania Counties: Armstrong, Indiana, Erie, Crawford, Warren, Elk, Cameron, McKean, Clinton, Lycoming, Sullivan, Wyoming, Luzerne, Columbia, Butler, Mercer, Lawrence, Beaver, Bradford, Susquehanna, Adams, Cumberland, York, Berks, Schuylkill New Jersey Counties - Sussex, Morris, Passaic, Atlantic, Cape May, Monmouth, Middlesex, Somerset, Warren, Hunterdon, Maryland Counties - Kent, Queen Annes, Talbot, Dorchester No Dealer Fees.



Name _____
Address _____
County _____ Zip _____
City _____ State _____
Phone _____
(Include area code) LF

Bethlehem 20 YEAR WARRANTY

More good news, when specified as roofing or siding. Galvalume is warranted, under exposure to normal atmospheric conditions, for a period of twenty years against rupture, perforation, or structural failure.

KNOXVILLE CONSTRUCTION
Knoxville, Pa. 16928
PH: 814-326-4188

LEROY E. MYERS, INC.
Route #1, Box 163
Clear Spring, Md. 21722
PH: 301-582-1552

D. E. SMITH, INC.
Mifflintown, Pa. 17059
PH: 717-436-2151

POGO INC.
1841 Jerry's Road
Street, Md. 21154
PH: 301-692-5350

FOUR COUNTIES CONTRACTOR
R.D., Box 249
Coalport, Pa. 16627
PH: 814-257-5751

C & M SALES INC.
R.D.#1
Honesdale, Pa. 18431
PH: 717-253-1612

ORVILLE MACK
P.O. Box 47
Nazareth, Pa. 18064
PH: 215-759-1331

W.R. MOODY, CONTRACTOR
113 Walnut Lane
West Newton, PA 15089
PH: 412-872-6804

O. A. NEWTON & SON CO.
Bridgeville, Delaware 19933
PH: 302-337-8211

TRI-STATE MARINE DIST. INC.
Route 256
Deale, Md. 20751
PH: 301-867-1447