

Va. market summary & sale reports

Virginia Auction Summary

Oct. 28-Nov. 3
 Report supplied by VDA
 Total of Va. Weekly Feeder Cattle Auction Receipts: 13,139.
 TREND: Steers & bull steady, heifer steady to \$2 higher.

Southwest, Va. Auction Summary
Oct. 28-Nov. 3
 STEERS: 300-500 lbs. Medium 1 55.00-65.00; Large 1 58.00-65.00; Small 1 45.00-58.00. 500-700 lbs. Medium 1 54.00-62.75; Large 1 56.75-65.00; Small 1 47.75-58.00. 700-1000 lbs. Medium 1 51.00-60.00; Large 1 53.00-63.50; Small 1 45.00-56.00.
 HEIFERS: 300-500 lbs. Medium 1 40.00-50.25; Large 1 41.50-51.00; Small 1 36.50-44.00. 500-700 lbs. Medium 1 40.00-50.00; Large 1 41.00-52.50; Small 37.00-44.00. 700-900 lbs. Medium 1 41.00-47.50; Large 1 45.00-46.00; Small 1 700-900 lbs. 37.00-42.00.

Southeast Va. Auction Summary
Oct. 28-Nov. 3
 STEERS: 300-500 lbs. Medium 1 54.50-63.50; Small 1 50.00-55.00. 500-700 lbs. Medium 1 55.00-62.50;

Small 1 44.75-50.00. 700-1000 lbs. Medium 1 54.00-59.25.
 HEIFERS: 300-500 lbs. Medium 1 38.50-46.00; Large 1 48.00; Small 1 42.00. 500-700 lbs. Medium 1 40.00-51.25.

Northern Va. Auction Summary
Oct. 28-Nov. 3
 STEERS: 300-500 lbs. Medium 1 55.00-67.50; Large 1 57.00-69.50; Small 1 49.00-61.00. 500-700 lbs. Medium 1 53.00-65.75; Large 1 56.00-67.75; Small 1 50.00-60.00. 700-1000 lbs. Medium 1 53.00-63.75; Large 1 53.10-62.50; Small 1 56.00-66.00.
 HEIFERS: 300-500 lbs. Medium 1 40.00-52.00; Large 1 43.50-53.50; Small 1 38.50-48.00. 500-700 lbs. Medium 1 41.00-52.75; Large 1 44.00-53.75; Small 1 38.00-49.00; 700-900 lbs. Medium 1 43.00-50.00; Small 1 40.00-42.00.

Special Graded Feeder Cattle
 Culpepper, Va.
 Thursday, Oct. 28
 1,180 head.
 STEERS: Medium 1: 300-400 lbs. 57.00-69.50; 400-500 lbs. 61.00-72.00; 500-600 lbs. 62.00-73.50; 600-700 lbs. 66.00-67.00. Large 1: 400-500 lbs. 61.00; 500-600 lbs. 67.50-68.00; 600-700 lbs. 65.50-68.00. Small 1 300-400 lbs. 59.00-64.50; 400-500 lbs. 59.00-68.50; 500-600 lbs. 62.00-65.00; 600-700 lbs. 63.00. Med. and Lg. 2: 400-500 lbs. 59.00; 500-600 lbs. 54.25
 HEIFERS: Medium 1: 300-400 lbs. 45.00-49.25; 400-500 lbs. 49.00-58.00; 500-600 lbs. 55.25-59.75; 600-700 lbs. 58.25. Large 1: 400-500 lbs. 52.00-55.50. Small 1 300-400 lbs. 51.50-52.00; 400-500 lbs. 45.50-58.00; 500-600 lbs. 55.00. Med. and Lg. 2: 300-400 lbs. 48.00; 500-600 lbs. 51.50.

Special Graded Feeder Cattle
 Marshall Va.
 Thursday, Oct. 28
 1,344 head.
 STEERS: Medium 1: 400-500 lbs. 64.00; 500-600 lbs. 64.50-72.50; 600-700 lbs. 63.00-66.50; 700-800 lbs. 60.00-65.25; 800-900 lbs. 59.50-64.00; 900-1000 lbs. 57.75-60.00. Large 1: 500-600 lbs. 67.00; 600-700 lbs. 63.00-64.50; 700-800 lbs. 61.00-63.25; 800-900 lbs. 58.50-62.50; 900-1000 lbs. 58.00-60.00. Small 1: 400-500 lbs. 55.00-58.50; 500-600 lbs. 55.00-58.00; 600-700 lbs. 56.75-63.75; 700-800 lbs. 60.25-60.75; 800-900 lbs. 54.00-54.50. Med.-Lg. 2: 400-500 lbs. 52.50; 500-600 lbs. 51.50-57.00; 600-700 lbs. 56.00-59.50; 700-800 lbs. 54.50-59.50; 900-1100 lbs. 56.50.

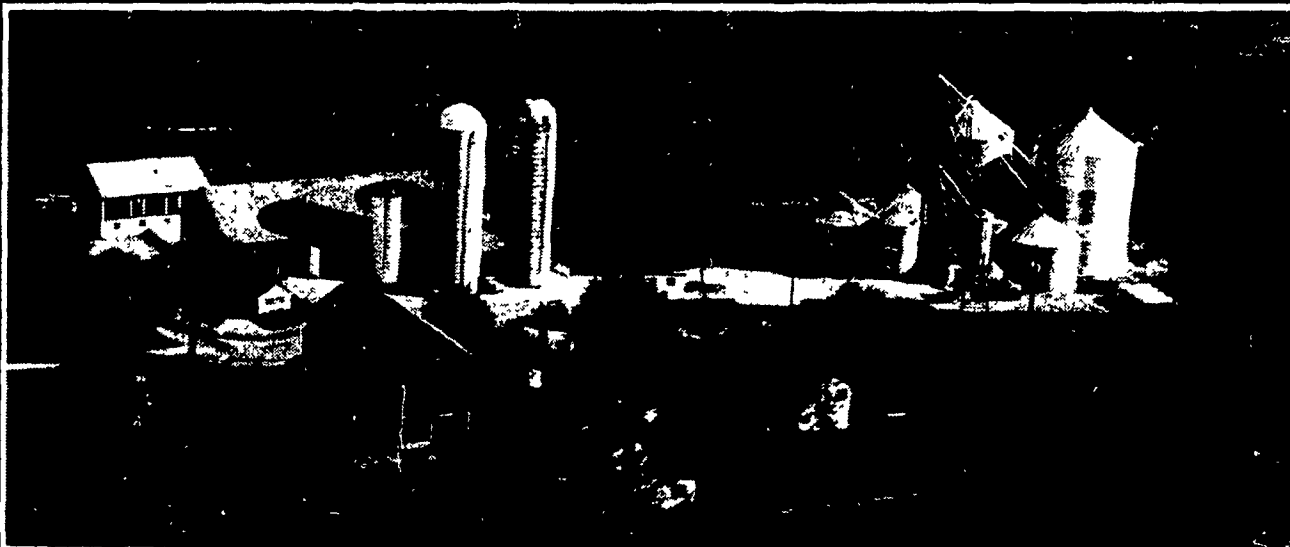
Special Graded Feeder Cattle
 Winchester, Va.
 Friday, Oct. 29
 1,346 head.
 STEERS: Medium 1: 300-400 lbs. 72.50-74.00; 400-500 lbs. 66.50-74.00; 500-600 lbs. 68.00-73.75; 600-700 lbs. 65.25-68.00; 700-800 lbs. 61.00-65.75; 800-900 lbs. 56.00-64.25; 900-1000 lbs. 60.50-62.00. Large 1: 400-500 lbs. 72.00; 500-600 lbs. 68.00-72.00; 600-700 lbs. 65.75-67.00; 700-800 lbs. 64.00-66.50; 800-900 lbs. 55.50-59.00; 900-1000 lbs. 61.50. Small 1: 300-400 lbs. 63.50-65.50; 400-500 lbs. 65.50-70.00; 500-600 lbs. 65.00-67.00; 600-700 lbs. 67.00; 700-800 lbs. 63.50-64.50. Med.-Lg. 2, 400-500 lbs. 59.50;

500-600 lbs. 58.00-59.50; 600-700 lbs. 58.50-59.50; 700-800 lbs. 57.00-58.50; 800-900 lbs. 56.00-59.50; 900-1000 lbs. 55.50.
 HEIFERS: Medium 1: 300-400 lbs. 56.00-57.00; 400-500 lbs. 51.00-58.00; 500-600 lbs. 52.00-60.00; 600-700 lbs. 50.00-54.50; 700-800 lbs. 51.00-53.00. Large 1: 400-500 lbs. 52.00-60.50; 500-600 lbs. 52.00-59.00; 600-700 lbs. 53.00-58.50; 700-800 lbs. 53.00-57.00. Small 1: 300-400 lbs. 38.00-50.00; 400-500 lbs. 44.00-55.00; 500-600 lbs. 41.00-47.00; 600-700 lbs. 45.50. Med.-Lg. 2: 300-400 lbs. 43.00; 400-500 lbs. 36.00-44.00; 500-600 lbs. 42.50-45.00; 600-700 lbs. 43.00-44.25.

Special Graded Feeder Cattle
 Abington, Va.
 Monday, Nov. 1
 794 head.
 STEERS: Medium 1: 400-500 lbs. 56.00-63.00; 500-600 lbs. 58.25-64.00; 600-700 lbs. 62.25-64.50; 700-800 lbs. 62.00-64.75; 800-900 lbs. 54.00-60.00; 900-1000 lbs. 51.50-53.25. Large 1: 600-700 lbs. 59.00-66.00; 700-800 lbs. 55.00-59.50; 800-900 lbs. 53.00-56.50; 900-1000 lbs. 51.50-53.60; 1000-1100 lbs. 47.75-49.50. Small-1: 400-500 lbs. 57.00-65.00; 500-600 lbs. 51.00-60.50; 600-700 lbs. 55.50-62.00; 700-800 lbs. 54.00-61.50; 800-900 lbs. 53.50-58.00. Med.-Lg. 2: 400-500 lbs. 59.00-64.00; 500-600 lbs. 59.50-62.00; 600-700 lbs. 59.00-61.00; 700-800 lbs. 52.75-54.50; 800-900 lbs. 49.00-50.00.

Some agents talk about money-saving farmowner's protection

Your Agway farm insurance agent gives you proof



Agway Farmowner's Insurance gives you more complete property and liability coverage, at a money-saving price. But don't take our word for it. Ask your Agway Insurance agent for proof.

Proof about quality coverage

A point-by-point comparison will show you exactly how Agway Farmowner's Insurance compares to your present policy (or policies), in important coverages for property and liability protection. Plus, you will see additional benefits like extra expense coverage to continue operations following a loss, and important liability coverages that include legal defense costs.

Proof about farm-oriented service

Agway agents spend 100% of their time serving farmers like you. Your Agway agent is a farm insurance specialist, with the training to design a single policy that covers all your protection needs, including your home, personal property, barns, machinery, livestock, and even your produce.

Proof about the best price

Best of all, by combining all your coverage into one convenient package, your Agway agent can offer you a money-saving price and payment plans consistent with farm cash flow. In the vast majority of

cases a comparison proves that Agway Farmowner's Insurance can offer you more complete protection at a better price. For your proof, fill out and send the coupon below. There's no obligation!

Yes! I want **PROOF**

Have an Agway Insurance agent contact me to arrange a free cost and coverage comparison, so I can see for myself how Agway Farmowner's Insurance can give me better protection, at a money-saving price.

Name _____
 Address _____
 City _____ State _____ Zip _____
 County _____ Phone _____

Send this coupon to Agway Insurance, P.O. Box 4851, Syracuse, N.Y. 13221, or call toll-free 1-800-448-5523, except New York State call 1-800-962-5887.

LF

Working for people who work the land

AGWAY INSURANCE
 LIFE • HEALTH • FARM



General Hauling
 Serving Lancaster, York &
 Chester Counties up to
 100 mile radius
**Shelled & Ear Corn
 Grain
 Hay & Straw
 Lumber or Wood
 Silage
 Sawdust
 Tobacco
 Manure**
 Whatever it is call
717-786-1882
 day or night

Porkland Industries, Inc.



Attention:
HOG PRODUCERS

**WHY GET LESS MONEY -
 SHIP YOUR HOGS
 DIRECT TO PACKER**

- Your hogs will be weighed and paid for immediately at market prices.
- No commission or yardage deducted from check.
- Receiving hogs from 5 AM - 12 Noon.
- Call (717) 393-0416 for the price of hogs each day.

Ship Hogs To:
E.W. MARTIN CO.

Division of
PORKLAND INDUSTRIES, INC.
 1625 Old Philadelphia Pk.
 Lancaster, PA 17602