

Livestock market and auction news

Hay Markets

New Holland Hay

New Holland Sales Stables
Monday, Nov. 1
Report supplied by auction
72 loads.
Alfalfa few choice 134.00-150.00, medium quality 100.00-130.00; few off-color 90.00-100.00; Mixed few Choice Alfalfa & Timothy 120.00-145.00, choice Clover & Timothy 110.00-130.00; grass and Timothy 90.00-110.00; Timothy few choice 112.00-134.00, mostly 95.00-110.00; Stubble 64.00-86.00; Straw 90.00-100.00, few to 110.00; Soybean Stalks 40.00 & 63.00; Corn Fodder 52.00-69.00.

Good's Hay

Leola, Pa.
Wednesday, Nov. 3
Report supplied by auction
61 loads.
Mixed 66.00-103.00; Old Corn 84.00-96.00; one New Corn 66.00; Straw 72.00-95.00; Corn Fodder 46.00-57.00; Timothy 73.00-116.00; Alfalfa 117.50-135.00.

Frederick Co. Hay

Buckeystown, Md.
Thursday, Nov. 4
Report supplied by auction
9 loads.
Two Alfalfa 136.00-140.00; two Straw 60.00-74.00; two Timothy 125.00-130.00; One Ear Corn 70.00; two Firewood 51.00-61.00 cord.

Leinbach's Hay

Shippensburg, Pa.
Tuesday, Nov. 2
Report supplied by auction
7 loads.
Mixed 85.00-112.00; Timothy 91.00; Fodder 59.00; Ear Corn 74.00-77.00.

Kiester's Hay

Middleburg, Pa.
Tuesday, Nov. 2
Report supplied by auction
13 loads.
Timothy 71.00-86.00; Mixed 82.50-94.00; Alfalfa 133.00-134.00; Corn 56.00-63.00.

Vintage Hogs

Vintage Sales Stables
Saturday, Oct. 30
Report supplied by auction
U.S. 1 & 2 205-235 lbs. 57.00-58.50; U.S. 2 & 3 200-245 lbs. 55.50-57.00; Sows 300-500 lbs. 47.00-52.00; Boars 300-600 lbs. 47.00-49.00.
Wednesday, Nov. 3
U.S. 1 & 2 205-235 lbs. 55.00-56.00; U.S. 2 & 3 200-245 lbs. 53.00-55.00; Sows 300-500 lbs. 45.00-51.00.

Regional Hay

Friday, Oct. 29
Report supplied by PDA
(All hay No. 2 and better, prices paid by the dealers at the farm and per ton.)
Hay & Straw - Steady.
Alfalfa 95.00-125.00; Mixed hay 80.00-90.00; Timothy hay 70.00-90.00; Straw 45.00-50.00, few 60.00; Mulch 25.00-40.00.

Green Dragon Hay

Ephrata, Pa.
Friday, Oct. 29
Report supplied by PDA
32 loads hay and 9 loads straw.
Alfalfa 100.00-126.00, one load 92.00; Mixed hay 78.00-149.00, mostly 98.00-134.00; Timothy hay 92.00-126.00; Stubble hay (2) loads 58.00 & 76.00; Straw 90.00-114.00, (1) load 125.00; Ear Corn (15) loads 53.00-89.00, Few to 107.00; Corn Fodder (3) Loads 41.00-52.00.

Belleville Hay

Belleville, Pa.
Wednesday, Oct. 27
Report supplied by PDA
8 loads hay and 1 load straw.
Alfalfa Few 90.00-106.00; Mixed hay Few 60.00-74.00; Grass hay Few 61.00-100.00; Straw 48.00.

Pa. Grain

Monday, Nov. 1

Report supplied by PDA
Compared with last Monday's market for Southeastern, Central and South Central Pa.: Corn uneven 5 cents higher to 10 cents lower. Wheat uneven steady to strong, instances 15 cents higher. Barley & Oats unevenly steady to weak. Old Ear Corn unevenly steady. New Ear Corn uneven, mostly steady to strong.

Prices paid delivered to dealers dock - (All prices per bushel, except Ear Corn per ton.)

Southeastern Pa.

Corn No. 2-y range 2.10-2.35, average 2.23; Wheat No. 2 range 2.90-3.20, average 3.06, New Crop 3.10-3.26; Barley No. 3 range 1.70-1.95, average 1.82; Oats No. 2 range 1.50-1.80, average 1.64; Soybeans No. 1 4.70-5.05, average 4.94; Grain Sorghum No. 2 range 1.70, average 1.70; Buckwheat range 9.80, average 9.80; Old Ear Corn range 59.00-68.00, average 62.97; New Ear Corn range 41.00-51.00, few reported 60.00, average 48.02.

Central Pa.

Corn No. 2-y range 2.00-2.30, average 2.18; Wheat No. 2 range 2.80-3.10, average 2.95; Barley No. 3 range 1.60-1.80, average 1.70; Oats No. 2 range 1.40-1.50, average 1.44; Soybeans No. 1 range 4.50-4.75, average 4.63; Grain Sorghum No. 2 range 2.30, average 2.30; Buckwheat range 10.00, average 10.00; Old Ear Corn range 58.00-64.00, average 60.80; New Ear Corn range 42.00-45.00, average 43.71.

South Central Pa.

Corn No. 2-y range 2.10-2.20, average 2.17; Wheat No. 2 range

2.85-3.10, average 2.94; Barley No. 3 range 1.70-1.80, average 1.76; Oats No. 2 range 1.50-1.65, few reported 1.80, average 1.61; Old Ear Corn range 55.00-70.00, average 60.36; New Ear Corn range 39.00-47.00, few reported 60.00, average 47.38.

Southeastern Central & South Central Summary

Corn No. 2-y range 2.05-2.30, average 2.20; Wheat No. 2 range 2.85-3.17, average 3.00; Barley No. 3 range 1.60-1.95, average 1.76; Oats No. 2 range 1.40-1.80, average 1.54; Old Ear Corn range 58.00-68.00, average 61.49; New Ear Corn range 40.00-51.00; average 46.66.

Western Pa.

Corn No. 2-y range 2.08-2.40, average 2.27; Wheat No. 2 range 2.80-2.90, average 2.84; Barley No. 3 range 1.85, average 1.85; Oats No. 2 range 1.50-1.70, few reported 1.30, average 1.54; Buckwheat range 9.00, average 9.00; Old Ear Corn range 65.00-66.00, average 65.50.

Eighty-four Livestock

Eighty-four, Pa.

Monday, Nov. 1

Report supplied by PDA

CATTLE 525. Compared with last Monday's market, slaughter steers 50 cents to \$1 lower. Slaughter cows 50 cents to mostly \$1 lower. Few Choice slaughter steers 58.00-61.00, Good 51.00-56.00, Standard 44.00-51.50, Utility 39.00-44.50. Few Good slaughter heifers 49.00-52.00, Standard 43.00-47.00, Utility 40.00-50.00. Utility & Commercial slaughter cows 36.00-42.00, few 42.00-44.00, Commercial No. 4-5 34.00-39.00, Cutters 34.00-

37.00, Canner & Low Cutter 27.00-34.50, Shells down to 17.00. Yield Grade #1 950-1800 lbs. slaughter bulls 46.00-51.00; yield grade #2 1000-1400 lbs. 40.25-46.50. Medium Frame #1 350-600 lbs. feeder steers 52.00-56.00, few Large frame #1 600-700 lbs. 58.00-60.00; Medium Frame #1 375-500 lbs. feeder heifers 44.00-50.00, Medium Frame #2 300-400 lbs. 39.00-41.00; Medium Frame #1 400-600 lbs. feeder bulls 48.00-55.00.

CALVES 333. Vealers grading Good & Choice steady to strong, Standard & Good \$2 to \$3 lower. Choice vealers 75.00-85.00, Good 65.00-77.00, Standard & Good 90-120 lbs. 44.00-55.00, 60-85 lbs. 38.00-45.00, Utility 80-120 lbs. 18.00-34.00. Farm calves, holstein bulls 90-120 lbs. 50.00-68.00; holstein heifers 80-110 lbs. 45.00-70.00.

HOGS 45. Barrows & gilts unevenly steady. US No. 1-2 200-300 lbs. barrows & gilts 54.50-55.50, 1-3 210-230 lbs. 53.70-54.60. US No. 1-3 450-600 lbs. sows 49.00-51.75, one at 55.25. Boars 42.50-45.00.

FEEDER PIGS 2. Two US No. 1-3 55 lbs. feeder pigs at 37.50 per head.

SHEEP 250. Woolled slaughter lambs fully steady. Choice 75-95 lbs. woolled slaughter lambs 47.00-50.00, Good 75-100 lbs. 44.25-48.00, Utility 55-70 lbs. 43.00-49.25. Slaughter sheep 15.00-20.00.

GOATS 8. 8.00-32.00 per head.



ONE STEP TRANSIT

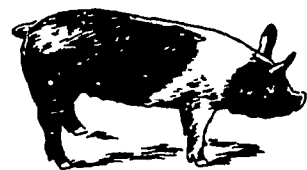
JOHN STAUFFER
RD3 Box 233 Elizabethtown, PA 17022
717-367-3875

Providing expert care and cleanliness for your cattle by gooseneck

LOCALLY or NATIONWIDE

Zeller Agri Services

High Pressure Washing & Disinfecting
Poultry Houses, Hog Buildings, Calf Barns
Mite & Beetle Spraying
Complete Ventilation & Security Alarm Specialists
We Now Have 2 Washer Units to Serve You Better
We work with producers on short notice.
RD 1, Elizabethtown, Pa. 17023
717-362-3860



EMERY'S BUYING STATION

OPEN TO RECEIVE YOUR MARKET HOGS

AT THE GREEN DRAGON MARKET
RD 4, EPHRATA, PA 17522
1 MILE NORTH OF EPHRATA ON NORTH STATE STREET.
HOURS
MONDAY, TUESDAY, and WEDNESDAY
6:00 A.M. to 11:30 A.M.
215-458-5677 Residence
717-733-9648 Office

YOU ARE PAID FOR YOUR HOGS IMMEDIATELY

Ken & Lois Emery, Proprietors

Breeding Checker Boar 140 G.P.P.

Kleen Leen Hog Seed

Those aggressive Checker™ Boars and healthy Checker™ Gilts are as close at hand as we are. No one offers more to your entire hog operation: Kleen Leen's guaranteed breeders. An unmatched health program. Plus the most progressive way to judge boars today... "Genetic Potential Rating."

Stop by soon. Remember, we've got more in store for you than just our great feeds.

SEE YOUR PURINA DEALER TODAY

K & K FEED, INC.
PHONE 717-866-2324
23 N PARK ST RICHLAND, PA 17087

Anthony's Feed Mill
PHONE: 215-488-6211
STRAUSTOWN, PA 19559

WEST WILLOW FARMERS ASSN., INC.
PHONE 717-464-3386
WEST WILLOW PA 17583

HESS MILLS
PHONE 717-442-4183
717-768-3301
PARADISE, PA 17562

KEYSTONE MILLS
John B. Kurtz
PHONE 717-354-4616 717-738-1088
RD3, EPHRATA, PA 17522

LEHMANS FEED STORE
PHONE 717-528-4151
YORK SPRINGS PA 17372

WOODSTOWN ICE & COAL CO.
PHONE 609-769-0069
WOODSTOWN, N J 08098

FRIDAY, NOVEMBER 26 ON THE FARM MONTHLY BRED GILT SALE

Sale to Start Promptly at 1:00 Every 4 Weeks

Located 18 miles south of Lancaster, Pa., 6 miles south of Quarryville, take Rt. 272 to Little Britain, turn north, follow Little Britain Road to Jackson Road, 2nd farm. OR take Rt. 222, out of Quarryville to Cedar Hill Road to Little Britain Road to Jackson Road. Watch for sale arrows.

50 to 60 Head

Now selling our new hybrid gilts representing mostly York & Hampshire & Landrace cross. Bred for easier & less trouble over farrowing and better weight gains.

Validated Brucellosis Free Herd #169
Qualified Pseudorabies Free Herd #55

Hand Mated
36 Head Due Between Dec. 2 and Dec. 9
19 Head Due Between Dec. 9 and Dec. 20

Local Trucker Available.
No Hogs Sold On Commission.

CHRIST A. BEILER
R.D. 2, Quarryville, Pa
JOHN B. STOLTZFUS
R.D. 1, Kirkwood, Pa

Abe Diffenbach, Auctioneer
NEXT SALE DATE DECEMBER 24