


# Livestock market and auction news

**THE OLD FARMER'S ALMANAC**

**OCT. 25-31, 1982**  
Daylight saving time ends.

We return to standard time Oct. 31 (Sun.) so set your clock back one hour before retiring... Muhammad Ali KO'd George Foreman Oct. 30, 1974... Average length of days for the week, 10 hours, 31 minutes... The stock market crashed Oct. 29, 1929... There is no cure for birth or death save to enjoy the interval.



**Ask the Old Farmer:**  
What is the best way to prevent mildew when one leaves a house unoccupied from late fall through late spring?  
It's fully furnished and we fear we'll have to replace mattresses, pillows, etc. R. H., Coronado, Calif.  
Leave all inside doors open; this lets the warm air from the sunny side circulate to the cold side and evens the temperature inside the rooms. Cover mattresses and pillows with a sheet, but allow air to circulate under the beds. If the house is very tight, leave an upstairs window open a crack on the side away from the prevailing winds.  
Home Hints: Club soda that has gone flat is good for watering plants, the remaining chemicals add vigor and color.

**OLD FARMER'S WEATHER FORECAST**

**New England:** Warm and rainy, very beginning of week; midweek is clear and cold; rainy, cold weekend.  
**Greater New York-New Jersey:** To start, rainy, mild; cold, midweek; week's end brings mild temperatures, light rain.  
**Middle Atlantic Coastal:** Showers begin week; turning cloudy and cool, then rainy, rest of week.  
**Piedmont & Southeast Coastal:** Sunny and warm through midweek; for weekend, cloudy, very warm, with showers.

(All Rights Reserved, Yankee Publishing Incorporated, Dublin, NH 03444)

## Oklahoma Cattle

Thursday, Oct. 21  
Estimated Receipts: 3,000  
Same Day Last Week: 3,194  
Trade moderate. Feeder steers and heifers generally steady with the weeks full decline. Majority receipts medium frame 1 and mixed 1-2 350-700 lb. Feeder steers and 400-600 lb. feeder heifers.  
**FEEDER STEERS:** Medium Few Large Frame 1 300-500 lb. 62.50-66.70; 500-600 lb. 62.50-64.10; 600-700 lb. 62.50-63.70; Package 746 lb. 62.00; 800-900 lb. 60.90-63.10. Small Frame 1 300-500 lb. 56.25-61.25. Medium and Large Mixed 1-2 500-700 lb. 60.00-61.40; few 700-800 lb. 60.25-60.60. Medium and Large Frame 2 few 595-725 lb. 57.00-59.70.  
**FEEDER HEIFERS:** Medium Few Large Frame 1 package 210 lb. 57.00; 300-500 lb. 52.50-54.75; 500-600 lb. 53.50-56.80. Small Frame 1 300-600 lb. 50.00-51.50. Medium and Large Frame Mixed 1-2 few 400-450 lb. 50.80-51.20; 500-700 lb. 50.25-53.00. Medium and Large Frame 2 350-750 lb. 47.00-49.80.  
**FOR THE WEEK:** Compared to late last week feeder steers and heifers under 500 lb. mostly 2.00-3.00 lower; steers over 500 lb. 1.00 lower. Heifers over 500 lb. 1.00-2.00 lower. Slaughter cows closed weak to 50 cents lower with limited Thursdays sales Utility and Commercial 2-3 package 37.30; low-dressing 36.00-36.40; Cutters 1-

2 34.00-36.20; Canner and Low Cutters 29.00-33.80. Slaughter Bulls were generally steady in limited trade with YG 1 1300-1700 lb. mostly 46.50-50.00. Package 1563 lb. 51.60. Salable receipts this week totaled near 32,300 head compared with 23,412 head last week and 23,887 head last year. The bulk of this weeks receipts, or fully 88 percent of supply consisted of feeder cattle and calves; cows and bulls made up 12 percent of salable receipts totaling near 3,900 head.

## New Holland Dairy

New Holland, Pa.  
Wednesday, Oct. 20  
Report supplied by auction  
Reported receipts of 59 cows, 81 heifers, and 5 bulls. Market steady.  
Load of Pa. fresh cows 600.00-1100.00, springers 1170.00-1260.00; Load of Pa. fresh cows 640.00-1200.00; Load of N.Y. cows 1225.00-1500, springers 1100.00-1350.00.  
Locally consigned cows 440.00-1130.00; Springing heifers 800.00-1090.00; Open heifers 330.00-500.00; Bulls 300.00-770.00.

## Carlisle Auction

Carlisle, Pa.  
Tuesday, Oct. 19  
Report supplied by auction  
**CATTLE:** Steers were steady; Heifers were steady; Cows were steady to .50 higher; Bullocks were 6.00 higher; Bulls were steady. Steers: Good 55.75-57.50; Standard 48.75-50.50; Utility 46.75 down; No Choice steers offered. Heifers: No Choice offered; Good 51.25-53.50; Standard 44.25-47.50; Utility 42.00 down. Cows: Utility & Commercial 40.00-43.50; Cutter 37.60-39.75; Canner & Low Cutter 35.50-38.00; Shells 31.50 down. Bullocks: No Choice offered; Good 53.50-55.00; Standard to 50.75. Bulls: No Yield Grade No. 1's offered; Yield Grade No. 2 to 48.00.

**FEEDER CATTLE:** Steers were steady; Heifers were 17.00 higher for Good Heifers under 250 lbs. and steady for heavier heifers; Bulls were steady to 1.00 lower. Steers: Good 395-480 lbs. 55.50-57.00; Good 615-807 lbs. 54.75-55.00; Medium 395-420 lbs. 42.00-44.00; Medium 622-755 lbs. 46.00-48.00; Medium 810-845 lbs. 48.00-50.00. Heifers: Good 175-240 lbs. 60.00-68.00; Medium 200-260 lbs. 43.00-45.50; Medium 485-670 lbs. 43.00-44.50; Medium 585-680 lbs. 47.00-48.50. Bulls: Medium 307-460 lbs. 40.00-47.00; Medium 755-795 lbs. 46.00-48.50.

**CALVES:** Vealers were 2.00 higher! Back to the Farm Calves were 13.00 higher for Hol. Bulls and 12.00 lower for Hol. Heifers! Vealers: Choice 85.00-104.00; Good 70.00-85.00; Standard & Good 55.00-70.00; Light & Weak 54.00 down.

**HOGS:** Were 1.65 lower. US No. 1-2 56.35-58.10; US No. 1-3 53.10-56.50. Sows: Steady to .50 lower; US No. 1-3 52.00-55.50; No. 2-3 45.00-51.00. Boars: 3.50 higher! 44.00-48.00.

**FEEDER PIGS:** US No. 1-3 26-36 lbs. 32.00-40.00 hd. US No. 1-3 39-42 lbs. 42.00-46.00 hd.; US No. 1-3 47-63 lbs. 43.00-53.00 hd.

**SHEEP:** To few to test market. Goats: 30.00-52.50 hd.

## Shenandoah Valley Livestock

Harrisonburg, Va.  
Saturday, Oct. 16  
Report supplied by auction  
**FEEDER CATTLE:** Trend-Feeder Steers steady - Feeder Heifers steady - Feeder Bulls steady. Steers: M&L-1 300-500 lbs. 58.00-65.50; 500-700 lbs. 57.00-62.50; 700-1000 lbs. 53.75-58.75; Holstein 300-1000 lbs. 42.00-50.50. S-1&M&L-2 300-500 lbs. 45.00-55.00; 500-700 lbs. 47.50-59.00; 700-1000 lbs. 50.00-56.00.

**Feeder Bulls:** M&L-1 300-500 lbs. 51.00-56.50; 500-700 lbs. 46.50-52.00; 700-1000 lbs. 45.50-51.00. S-1&M&L-2 300-500 lbs. 45.00-49.50; 500-700 lbs. 43.50-48.50. Heifers: M&L-1 300-500 lbs. 44.50-51.50; 500-700 lbs. 42.50-48.50; 700-800 lbs. 44.00-48.00. S-1&M&L-2 300-500 lbs. 39.25-42.00; 500-700 lbs. 39.00-43.00; 700-800 lbs. 40.50-43.00. Stock Cows: Baby Calves 40.00-65.00 - Small of 15.00-35.00.

**SLAUGHTER CATTLE:** Steers-Good 2-3 55.00-55.75.

**SLAUGHTER COWS:** Steady. Utility & Commercial 2-4 36.00-40.50; Canner & Cutters 1-3 30.00-34.75.

**SLAUGHTER BULLS 1&2:** 42.75-52.50.

**LAMBS:** 25 cents higher. High Choice & Prime 50.00; Choice 44.50; Feeder Lambs Choice 45.00-47.00; Slaughter Ewes 10.00-13.25.

**HOGS:** US 1-3 200-240 lbs. 56.00; Sows 1-3 50.00-60.00; Boars 42.00.

**VEAL:** Choice & Good 76.00; Good 57.00-60.00.

**SLAUGHTER CALVES:** Good & Choice 40.00-49.00.

## East Coast Carlot

Wednesday, Oct. 20  
Report supplied by USDA  
Compared to Tuesday's close: Prime special fed veal generally steady in limited test. Good and Choice boning veal steady. Lamb market not established; however, weak undertone indicated. Boneless Beef steady to 2.00 higher in limited test and compared to last week.

### VEAL CARCASS

250 Head

PRIME

HIDE ON

180-240 lbs. 150.00-152.00 ltd, generally steady.

### BONING TYPE

HIDE-ON

Good & Choice

Northeastern Suppliers: All steady. 65-75 lbs. 81.00 ltd; 55-64 lbs. 79.00 ltd; 45-54 lbs. 77.00 ltd; 35-44 lbs. 75.00 ltd; 34 lbs. down 73.00 ltd.

Inshipped: All steady with Monday. 71-80 lbs. 83.00; 61-70 lbs. 81.00; 51-60 lbs. 79.00; 41-50 lbs. 77.00; 30-40 lbs. 75.00.

### BONELESS BEEF

6 Loads

90 pct chem lean, fresh 115.00, steady.

90 pct chem lean, frozen 116.00 pl.

85 pct chem lean, fresh 110.00, 1.00-2.00 higher.

75 pct chem lean, fresh 96.00 pl.

## Peoria Cattle

Thursday, Oct. 21  
Report supplied by USDA  
Compared to last week Slaughter Steers finished the week .50-1.00 lower. Heifers steady to .50 lower. Cows closed steady to weak. Bulls remained steady. Trade on Slaughter Steer fairly active, spurred by pressure from commodity interest. Heifers regained most of early week downturns due to light supply.

**SLAUGHTER STEERS:** Choice 2-4 1050-1300 lbs. 57.50-59.50. 4 loads 1050-1150 lbs. 60.00. Mixed Good and Choice 2-3 950-1150 lbs. 56.50-58.50. Load near 1400 lbs. at 58.50. Good 54.00-57.00. Holsteins: Good and Choice 2-3 1150-1400 lbs. 50.00-54.00.

**SLAUGHTER HEIFERS:** Choice 2-4 900-1050 lbs. 55.00-58.00, closing sales largely 57.00-58.00 on consignments carrying low percentage YG 4's. YG 3-4's 55.00-56.50. Good and Choice 2-3 850-1000 lbs. 54.00-57.00. Good 52.00-55.00.

**COWS:** Utility 1-3 39.00-42.00. Cutter 36.00-39.00. Canner and Low Cutter 32.00-37.00.

**BULLS:** YG 1-2 1100-1800 lbs. 46.50-50.00. Individual 52.00.

## Joliet Cattle

Thursday, Oct. 21  
Report supplied by USDA  
Friday through Wednesday's salable receipts 3600; 5 days last week 3150; same period a year ago 3698. Trading slow to moderate for the week. Slaughter Steers ended the week 1.00-1.50, instances 2.00 lower compared with Wednesday of last week. Slaughter heifers ended the week 1.50-2.00 lower. No recent price comparison on cows.

**SLAUGHTER STEERS:** Mixed High Choice and Prime 3-4 1200-1350 lbs. 60.50-61.00. Choice 2-4 1050-1300 lbs. 57.00-60.50, mostly 58.00-60.00. Mixed Good and Choice 2-3 1000-1300 lbs. 56.50-58.00, mostly 57.00-58.00. Choice 3 1675-1700 lbs. Holsteins load 56.00 Monday; load 56.50 Wednesday.

**SLAUGHTER HEIFERS:** Mixed Choice and Prime 2-4 975-1100 lbs. 56.50-57.00, load 57.50 Monday; 57.00, 3 loads 57.50 Wednesday. Choice 2-4 900-1100 lbs. 55.00-57.00, mostly 55.50-56.50. Mixed Good and Choice 2-3 800-1000 lbs. 51.00-55.00.

**COWS:** Cutter & Utility 1-3 37.00-40.00 Wednesday.

## Porkland Industries, Inc.



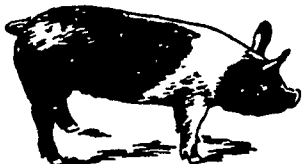
Attention:  
**HOG PRODUCERS**

**WHY GET LESS MONEY -  
SHIP YOUR HOGS  
DIRECT TO PACKER**

- Your hogs will be weighed and paid for immediately at market prices.
- No commission or yardage deducted from check.
- Receiving hogs from 5 AM - 12 Noon.
- Call (717) 393-0416 for the price of hogs each day.

Ship Hogs To:  
**E.W. MARTIN CO.**

Division of  
**PORKLAND INDUSTRIES, INC.**  
1625 Old Philadelphia Pk.  
Lancaster, PA 17602



**EMERY'S  
BUYING  
STATION**

**OPEN TO RECEIVE  
YOUR MARKET HOGS**

**AT THE GREEN DRAGON MARKET  
RD 4, EPHRATA, PA 17522  
1 MILE NORTH OF EPHRATA  
ON NORTH STATE STREET.**

**HOURS  
MONDAY, TUESDAY, and  
WEDNESDAY  
6:00 A.M. to 11:30 A.M.**

**215-458-5677 Residence  
717-733-9648 Office**

**YOU ARE PAID FOR YOUR  
HOGS IMMEDIATELY**

Ken & Lois Emery, Proprietors

**General Hauling  
Serving Lancaster, York &  
Chester Counties up to  
100 mile radius  
Shelled & Ear Corn  
Grain  
Hay & Straw  
Lumber or Wood  
Silage  
Sawdust  
Tobacco  
Manure**

**Whatever it is call  
717-786-1882  
day or night**

