

**Seeding,  
Weeding  
and mulch  
more**

*For the avid gardener*

### Spring flowering bulbs

There are several spring flowering bulbs that bloom very early in the season. As some of their names suggest, they may appear and flower before winter is gone.

Snowdrops, snowflakes, glory-of-the-snow, winter aconite, Siberian squill; they are delicate, but hardy harbingers of spring.

Iris reticulata and, of course, crocus are also early bloomers along with some very early narcissus and tulips. By planting these bulbs now, spring will seem to arrive earlier than usual next year. A clump of snow-drops nodding by the doorstep can cheer a gloomy late February day.

These species are generally small less than 8 inches tall, and need to be arranged in groups of closely spaced plants, 3-4 inches apart. They are most effective when nestled near a house, garden or landscape feature; placed in an open flower bed, they are lost.

Several species do well in light shade and can be planted among shrubs, or at the base of trees. A

gate, doorstep, wall, or birdbath, might serve as a focal point for the display.

Most of the early bulbs, once established, may be left alone for many years, during which time they will multiply profusely. This is something to keep in mind when planting them. Another important consideration, as with all flowering bulbs, is that the foliage must be

kept intact after the flowers have faded, until it begins to die back naturally. Make sure this will not interfere with annual plantings.

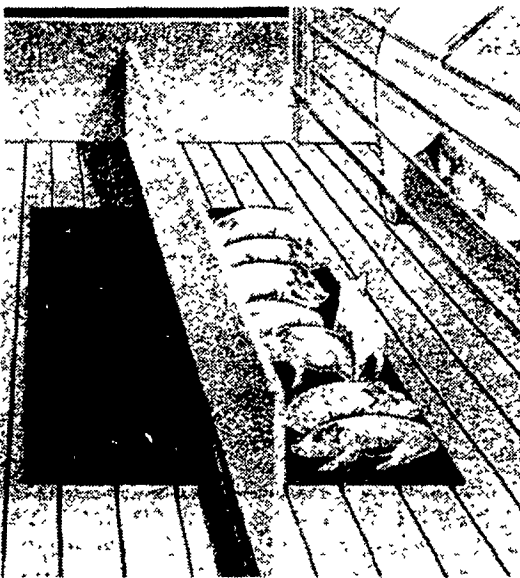
Most of the bulbs mentioned are available at local retailers; Snowflakes and Winter Aconite may be harder to find and might have to be obtained through a catalog.



**GIGANTIC SELECTION  
IN  
Lancaster Farming's  
CLASSIFIEDS**

# Don't Wait Till Winter Comes — ACT NOW!

## STANFIELD® HEAD PADS



**For Farrowing Crates and Nursery Pens**  
Put your pigs on a blanket.

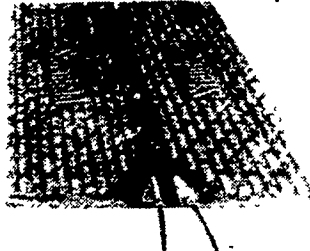
ONE OF THE BEST INVESTMENTS YOU CAN MAKE  
**PROFITS** increase with Stanfield® Heat pads. More healthy pigs get to market sooner. Cold sleeping floors and chilling are eliminated by uniform warmth for all pigs in the litter. Better rest means health and faster growth.

**DURABILITY** is proven by thousands of Stanfield® Heat Pads providing years of troublefree, reliable service. Used according to instructions, they will serve you for years.

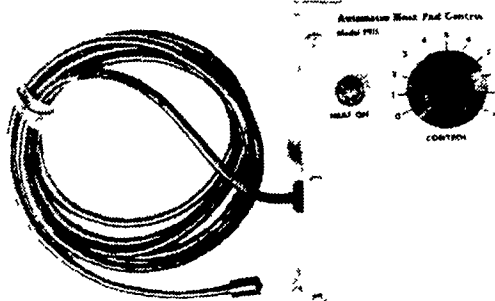
**ECONOMY** is easily seen. Stanfield® Heat Pads are inexpensive to operate. They also put the heat where it is most needed, between the pigs and the cold floor. And heating costs can be reduced by keeping the hog building cooler (60 °F) without stressing young pigs.

**EXPERIENCE** counts and we've had years of experience producing high quality heating products. Before you invest, look for the name Stanfield® the leader in quality.

**Full One Year Warranty On  
Material & Workmanship**



## FBA AUTOMATIC HEATING PAD REGULATOR



With These Features

- Totally Automatic
- Reliable Solid-State Electronics
- Pilot Light to Signal Operation
- Fully Adjustable Temperature Selection
- 2,000 Watt Capacity
- Full One-Year Warranty
- The F915 Regulatory comes complete with installation instructions and can easily be added to your present system.

## BROODER & HEAT LAMP



Rubber style 6 ft. cable, 10½" reflector, porcelain socket, with guard, and clamp UL listed. Bulb not included FBA 165 Heat Brooder

## ELECTRIC INFRARED HEAT LAMP

Use with electric brooder for brooding pigs. 250 watt or 125 watt 4 oz.

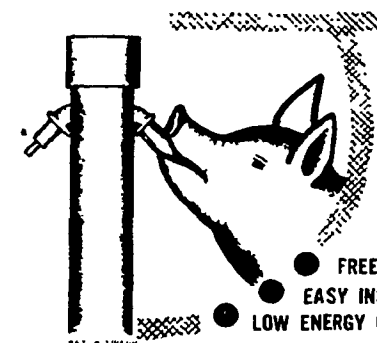
- 06858 250 Wt. Frost Brooder Lamp
- 05807 125 Wt. Frost Brooder Lamp
- 06868 250 Wt. Spatter-proof Brooder Lamp

## THE WHITE HEATER MEETS YOUR HEATING NEEDS

- Lowest Price Tag
- Automatic Thermostat
- Simple Installation
- Design A.G.A. Certified
- Safe, Clean Heat
- Quite Comfort
- Low Maintenance
- Proven Reliability
- Pays For Itself
- Work In Comfort
- Engineered For Farm Use
- Ideal For Poultry And Livestock Barns

Also 20,000 & 40,000 BTU Heaters Available

## NOLAND FREEZE GUARD STOCK WATERER



ALL THE  
ADVANTAGES OF  
NIPPLE WATERERS

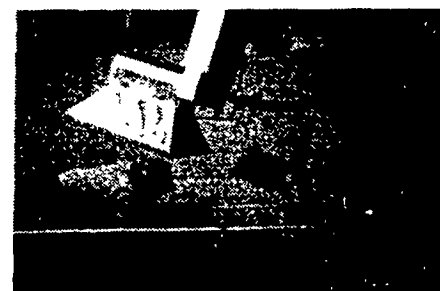
**PLUS**

- FREEZE PROTECTION
- EASY INSTALLATION
- LOW ENERGY CONSUMPTION

## UNITIZED CONSTRUCTION

WATER LINE, ELECTRIC CABLE AND HEATER ENCLOSED  
**GIVES NEAT INSTALLATION  
WITHOUT HAZARD OF EXPOSED  
RECEPTACLES AND POWER CORDS**

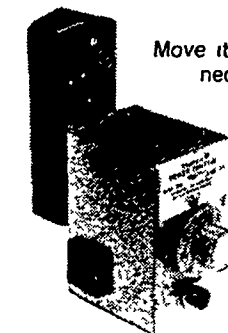
## SBM BROODERS



- Reduces pig mortality
- Easily adjusted.

**The Way To Greater Profits...Pigs Are Dry & Warm**  
Quick Start, Early Finish is the motto of this stainless steel constructed heater. Comes in many sizes to fit your needs.

## FARMER BOY AG POWER CONTROL



Move it to where it is needed. No rewiring necessary. Simply plug the F911 into existing 110-120 volt outlet. Set desired temperature for your particular conditions and note dial setting for future reference. The 911 will control up to 600 watts of heat pads. Just plug them into the two outlets on the 911.



REGULATES temperature of Stanfield® Heat Pads

SAVES electricity and reduces power bills.

CONVENIENT, quick method of control.

### FEATURES INCLUDE:

- All solid-state circuitry.
- Indicating pilot light.
- Positive ON-OFF switch.
- Two power control outlets.
- Manual set. Not thermostatic.

SWINE SYSTEMS SPECIALISTS

# FARMER BOY AG. INC.

410 E. LINCOLN AVE. MYERSTOWN, PA. 17067 PH. 717-866-7565

**BEST IN DESIGN, PRICE AND EXPERIENCE**