

# PFA testifies for mushrooms

CAMP HILL — Members of the Pennsylvania Farmers' Association met in Washington D.C. Tuesday with officials from the U.S. Department of Agriculture and the U.S. Trade

Representative to express support for a proposed quota on imported canned mushrooms from the People's Republic of China. A recommendation from the International Trade Commission

has been referred to U.S. Trade Representative William Brock and will even ultimately be sent to President Reagan for a decision by Nov. 30. In a tie vote on a petition filed by the American Mushroom

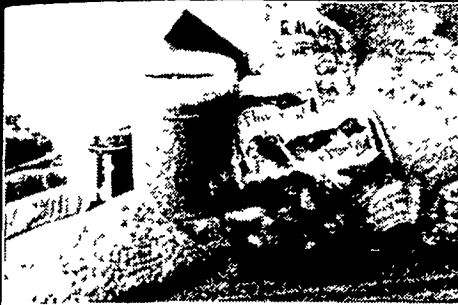
Institute last summer, two of the four ITC members recommended a three-year quota of 21 million lbs. annually be imposed on Chinese mushrooms. Despite a three-year tariff increase placed on imports in

1980, China has increased its exports to the U.S. from 265,000 lbs. in 1979 to 32.2 million lbs. in the 1981-82 crop year.

Pennsylvania is the nation's leading mushroom-producing state. However, according to Al Myers, manager of PFA's Public Affairs Department, "Pennsylvania mushroom growers are being forced out of business by unfair foreign competition and more damage will be done unless we get help from the government in the form of quotas and orderly marketing agreements."

Three Chester County Farmers' Association members — C. James Yeatman of West Grove, Clinton Blackwell of Hockessin, Del., and Steve Pizzini of Landenberg — explained to officials how their individual mushroom operations have been affected by increased imports.

Myers added that PFA believes the quota recommended by the ITC is only a temporary remedy for mushroom growers. "An orderly marketing agreement is the only viable permanent solution," he said.



## AGWAY FROZEN FOOD SALE

### Great Taste! Great Value!

**YOUR SATISFACTION WITH AGWAY FROZEN FOODS IS GUARANTEED!**

#### MONEY BACK GUARANTEE

All Agway frozen foods carry a No-Quibble customer satisfaction guarantee. Should any frozen food product prove unacceptable, just return it to place of purchase for a full refund of the purchase price.

Quantity	Description	Weight	Sale Price	Ext.
	SLICED APPLES W/Sugar	8 lbs	6 97	
	BLACKBERRIES IQF	5 lbs	6 44	
	BLACK RASPBERRIES IQF	5 lbs	7 27	
	CULTIVATED BLUEBERRIES	20 lbs	21 44	
	WILD BLUEBERRIES	15 lbs	20 44	
	DARK SWEET CHERRIES W/Sugar	30 lbs	25 92	
	DARK SWEET CHERRIES, IQF	5 lbs	7 55	
	RED TART CHERRIES W/Sugar	30 lbs	17 80	
	RED TART CHERRIES, IQF	5 lbs	5 94	
	MIXED FRUIT, IQF	20 lbs	18 66	
	FRUIT MEDLEY IQF	12/1 lb	20 86	
	SLICED PEACHES W/Sugar	30 lbs	19 83	
	SLICED PEACHES, IQF	5 lbs	6 44	
	PINEAPPLE CHUNKS (HAWAIIAN) IQF	2/5 lbs	11 91	
	RED RASPBERRIES	5 lbs	8 24	
	WHOLE STRAWBERRIES, IQF	20 lbs	22 94	
	SLICED STRAWBERRIES W/Sugar	30 lbs	28 65	
	SLICED STRAWBERRIES W/Sugar	6 1/2 lbs	8 29	
	APPLE JUICE CONC (No Sugar)	24/12 oz	20 96	
	CRANBERRY JUICE COCKTAIL CONC	24/12 oz	29 85	
	GRAPEFRUIT JUICE CONC (No Sugar)	24/12 oz	19 45	
	GRAPE JUICE CONC	24/12 oz	20 75	
	LEMONADE CONC	24/12 oz	13 96	
	ORANGE JUICE CONC (No Sugar)	24/6 oz	12 87	
	ORANGE JUICE CONC (No Sugar)	24/12 oz	21 57	

### ORDER TODAY!

Items are available only by advance order so don't delay. Order from your nearest Agway store or representative by mail, phone or in person.

Items marked I.Q.F. pour as easily as jelly beans from a bag. They are individually quick frozen for convenient removal and repackaging without thawing. And they contain no processed sugar.

In the event of unforeseen damage to crops or other causes beyond Agway control, quantities and prices are subject to change.

Quantity	Description	Weight	Sale Price	Ext.
	ASPARAGUS, CUTS & TIPS IQF	10 lbs	17 55	
	CUT GREEN BEANS	12/2 1/2 lbs	19 96	
	BABY LIMA BEANS	12/2 1/2 lbs	23 32	
	FORDHOOK LIMA BEANS	12/2 1/2 lbs	25 55	
	BROCCOLI CUTS	12/2 lbs	17 71	
	BROCCOLI SPEARS	12/2 lbs	19 92	
	BRUSSELS SPROUTS	12/2 lbs	18 37	
	SLICED CARROTS	12/2 lbs	14 88	
	CAULIFLOWER	12/2 lbs	20 45	
	WHOLE KERNEL CORN	12/2 1/2 lbs	22 96	
	BREADED MUSHROOMS IQF	2/5 lbs	15 45	
	SLICED MUSHROOMS IQF	2/5 lbs	14 45	
	PEAS	12/2 1/2 lbs	19 46	
	WHOLE LEAF SPINACH	12/3 lbs	17 94	
	MIXED VEGETABLES	12/2 1/2 lbs	20 91	
	LENDERS BAGELS	24/12 oz	15 25	
	SARA LEE POUND CAKE	12/12 oz	15 84	
	FRENCH FRIES	12/2 lbs	13 96	
	SHOESTRING FRENCH FRIES	12/20 oz	11 44	
	POTATO PUFFS	12/2 lbs	15 46	
	THOMAS ENGLISH MUFFINS	12/24 oz pkgs	17 84	
	BREADED ONION RINGS	8/2 lbs	15 68	
	PIZZA SLICES (CHEESE)	60/3 oz	14 96	
	FRENCH BREAD PIZZA	24/5 oz	13 91	
	REGULAR WAFFLES	12/19 oz pkgs	13 84	

IQF — Individually Quick Frozen

GRAND TOTAL

I will pick up the items I have ordered on 11/23/82

NAME \_\_\_\_\_

MAILING ADDRESS \_\_\_\_\_

PHONE \_\_\_\_\_

(PLEASE PRINT)

**Order By November 6, 1982 For Pickup On November 23, 1982**

Mail Above Order Form Or Call Your Nearest Agway Store

**LEBANON**  
16th & Cumberland St.  
Lebanon, Pa. 17042  
717-273-2621

**LANCASTER**  
1140 Dillerville Road  
Lancaster, Pa. 17603  
717-394-0541

**NEW HOLLAND**  
219 Railroad Ave  
New Holland, Pa. 17557  
717-354-4526

**SALUNGA**  
101 Main St.  
Salunga, Pa. 17538  
717-898-2248  
717-653-1864

**TEMPLE SUPPLY CENTER**  
North 5th Street Highway  
Temple, Pa.  
215-929-5264  
929-5794

**HENRY B. HOOVER INC.**  
1731 W. Main St.  
Ephrata, Pa. 17522  
717-733-6593

**CRESSONA AGWAY**  
2nd & Walnut Street  
Cressona, Pa. 17929  
717-385-2160

**CHAPMAN FARM & HOME AGWAY**  
Rt. 6 Box 620  
Allentown, Pa. 18106  
215-395-3381

**IRONTON**  
RD #1, Box 326  
Allentown, Pa. 18104  
215-799-3111

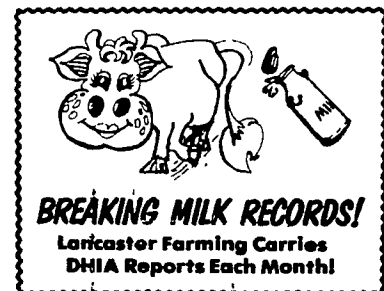
**LEESPORT AGWAY**  
Wall Street  
Leesport, Pa. 19533  
215-926-3717

**HANOVERDALE**  
486 Hershey Rd.  
Harrisburg, PA 17112  
717-566-2569



# AGWAY

answers your needs



## PUBLIC SALE

10th Annual All Day Sale  
at Linville Hill Mennonite School  
**SATURDAY, NOVEMBER 6**  
Starting at 9:30 A.M.

15 miles east of Lancaster off U.S. 30, 2 miles South of Kinzers on Kinzers Rd.

Items to be sold include:

Fresh pork products, ham, pork roll, sausage, canned goods, baked goods, potatoes, eggs, apple cider, bologna, hot dogs, etc.

Assorted Handiwork:

Quilts, all kinds of needlework and crocheted items and much more. Seed corn, shovels, 50 lb. bag Pioneer 53; alfalfa, wrenches, socket sets, new tools, thermometer, ice chest, gloves, anti freeze, starting fluid, bicycles.

6 month old lamb, hogs, feeder pigs, stacks of corn fodder. New carpet, Linoleum remnants (Meal Certificates)

Special attention

Mostly registered, a few grade heifers for sale, approximately 15 head will be sold at 1:00 p.m. Close springing Reg. 2 yr. Pietje Standout heifer from 20,000 lb. Gay Ideal Dam. Bred to mariner.

Reg. open Cavalier heifer from 3 point dam with 20,000 milk granddam 87 pt. and over 20,000 lb. milk.

Reg. Char-Sam Elevation Pabst heifer from Ivanhoe Star dam with over 24,000 milk 800 Fat. Reg. Jet Stream heifer from 2 yr. Gemini Reg. Joludi Elmer chief heifer from strong maternal line

Reg. Maplebound Starlite Rex heifer from 20,000 4.0 dam, a grade very heifer, also other grades.

10 ampules of Cal-Lill Standout Cavalier to be sold For information or catalogs call Sylvan Ressler (717) 786-2103.

Many more items too numerous to mention. Enjoy delicious homemade food, goodies, while attending our auction. All proceeds of the day will be used for the promotion of Christian education at the school. Any contributions will be greatly appreciated. All items will be donated.

For more information call:

Leon Lapp (717) 442-8140  
Christ Zook (215) 273-3213  
Daniel Martin (717) 786-1755

Auctioneers:

Leon Kurtz  
Steve Petersheim  
Omar Stoltzfus