

New Additions = PRODUCTION & TYPE

GRADUATES OF THE GOLD PROGRAM

FROM



**9H561
TERENCE**



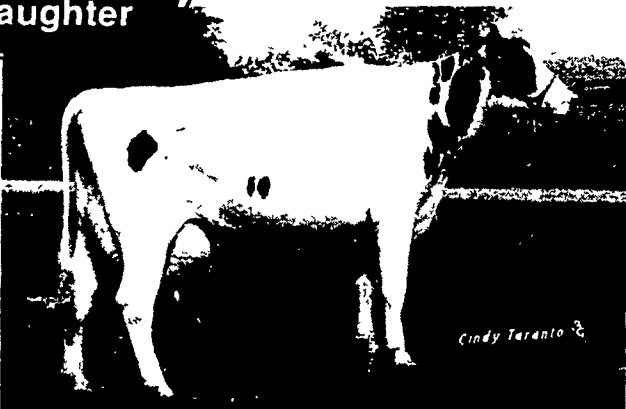
9H561 PACK-HERD ELEVATION TERENCE, EX(90)
 USDA 7/82 RIP 1% Rpty. 81%
 78 dtrs, 64 herds 17,483m 3.7% 645f
 Pred. Diff. '74 +\$155 +1,330m -.08% +36f
 HFA Type Comparison 7/82
 Pred. Diff. +1.29, Rpty. 76%

**9H576
SAXON**



9H576 REMVALE ELEVATION SAXON, VG(86)
 USDA 7/82 RIP 42% Rpty. 77%
 73 dtrs, 50 herds 17,325m 3.7% 645f
 Pred. Diff. '74 +\$173 +1,192m +.06% +52f
 HFA Type Comparison 7/82
 Pred. Diff. +0.32, Rpty. 72%

**TERENCE
Daughter**



LIME-VAL TERENCE LUCIA, VG(85)
 3-4 342d 20,229m 3.5% 706f
 Owner: Royal & Richard Champluvier, Wyalusing, PA

**SAXON
Daughter**



REMVALE SAXON MAME, VG(88) EX-MS
 2-4 365d 18,832m 4.0% 756f
 Owner: Marion Andrew, Centreville, MD

**TERENCE
Daughter**



REVLUC RAVENA, GP(82)
 3-4 305d 13,079m 4.2% 509f
 Owner: John C. Culver, Laceyville, PA

**SAXON
Daughter**



REMVALE SAXON BOBI 8, NC
 2-3 86d 5,790m 3.1% 180f Inc.
 Proj 305d 17,000m 528f
 Owner: Remvale Farm, Frederick, MD

TERENCE combines high production and outstanding type at +1.29 PDT with an outstanding pedigree. His dam has over 29,000 milk and his maternal sister has over 30,000 milk, and together they have at least five sons in A.I.

SAXON is a test improver with +1192 P.D. Milk and is plus on type. He is an Elevation from a Kingpin daughter.

For **TERENCE** and **SAXON** semen, contact your Sire Power Representative today.



"Your Genetic Progress Specialists"
 R.D. #2, Tunkhannock, Pa. 18657 — (717) 836-3168