

REAL ESTATE

REAL ESTATE

REAL ESTATE

REAL ESTATE

REAL ESTATE

REAL ESTATE

REAL ESTATE

2 Adjoining Farms in Franklin Co. 77 and 105 acres, Amish farms nearby, and 71 acres of woodland
VanCleve Real Estate
 717-392-3032

SOUTHWEST GEORGIA FARMS

Foreclosures and other distressed farm sales. All types and sizes. 160 to 6,400 acres. Bargain prices. \$500 per acre up. We are discount sellers for banks, other lending institutions and farmers.

James Dalton, Real Estate
 Americus, GA
 Call us at 912-874-6825

CENTRE COUNTY

Centre Hall, State College. 152 acre dairy farm. 85 tie stalls. Machine shed, Heifer barn, Silos, Pipeline, Tank, Limestone Soil. Stock & equipment can be bought \$650,000.

JUNIATA COUNTY

Dairy farm, 67 acres, 38 stanchions, barn cleaner, bulk milk tank, silo.

BRADFORD COUNTY

Troy, Rt. 6, 30'x40' 2 1/2 story block building, ideal for camp, on lot 100'x300'.

LANCASTER COUNTY

Bowmansville, 3 bedroom stone and frame house, 2 fireplaces, on 20 acres of woods.

64 STANCHION DAIRY FARM

284 acres, 160 acres tillable, level for farming, 90 acres woods. 24x70 silo, 2 Agway machine sheds, large shed 120x36', 1,000 gal bulk tank, nice house. \$295,000

Donald R. Witwer, Broker
 Ephrata, PA
 215-267-7963

DAIRY FARM

100 acres w/77 tie stall barn modern milkhouse & 110 gal. bulk tank. Pole barn, 3 silos, stone farmhouse \$295,000.

HORSE FARM

50 acres in Berks Co almost all tillable w/excell. soils. Excell. barn w/box stalls, water & electricity, stone farm house, \$149,000.

116 ACRE DAIRY-BREEDING FARM

This is one of the finest dairy breeding facilities in the east. 60-tie stall main barn, epoxy walls, automatic ventilation, Patz cleaner, new milk house and herdsman office. 1 yr. old 100+ heifer barn w/automatic locking gates, 1 yr-old 32 stall calf barn (this calf barn was featured in several magazine articles), 3 yr. old calving & bull barn. 2 silos and large trench silo, approx. 16,000' of fencing, machinery build. & many utility builds. all in very good cond. 2 houses on property - main house almost completely restored w/new wiring, turnace, kitchen, bath, etc. This farm produced some of the finest dairy cows in the world, including several #97s. Farm couldn't be duplicated at this price. \$487,200.



new pennsylvania realty, inc.

Gary Coles, GRI, CRS, Broker
 717-386-5000 or 215-398-2559
 Box 123, Route One New Ringgold, PA 17960
 Specializing in Farm Real Estate in Lehigh, Berks., Northampton and Schuylkill Counties for the past 9 years



FARMS FOR SALE
 Dairy, Horse, Beef & Crop (Bedford & Blair Counties)



Zane Helsel Real Estate Inc.
 407 Logan Blvd. Lakemont Altoona, PA 16602
814-946-1215
 Independently Owned

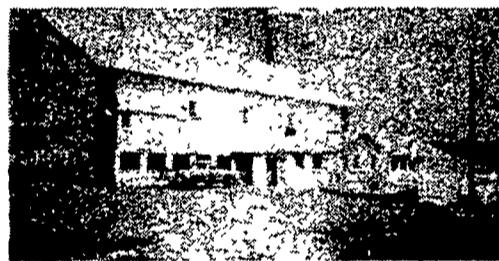
HUNTER'S PARADISE LANCASTER COUNTY

The well known Tuckuan Glen area or "Seven Crossings" is for sale. 130 acres of woodland adjoining Lanco Beagle Club Farm and the Susquehanna Wolf Trout Stock Stream and gravel pump road winding through the middle of the tract. Includes 2 cabins. Call about this investment opportunity for your hunting camp today!



EMORY D. WAGNER CO., REALTORS
 215 W. Fourth Street Quarryville, Pennsylvania 17566
 (717) 786-2131

New Listings



108 Acre limestone dairy farm. Oley Twp. Berks Co.
 76 Showeasie tie stalls. DeLaval pipeline system.
 Large milkhouse office and bathroom complex. 800 gal. Mueller bulk tank.
 1-20 x 70 sealed silo bottom unloader
 1-20 x 70 Fickes w/Jamesway top unloader
 1-12 x 40 Silo
 40 x 70 Implement Shed
 40 x 45 Stone & Frame Heifer Barn
 30 x 50 Block Heifer Barn
 Beautiful Stone 3 bedroom dwelling w/fireplaces
 Manatawng Creek runs thru property
 Call at once for your own private showing
 35 Acre #2 Stevens, Near Reamstown, Pa.
 20 A tillable balance mostly pasture w/stream
 Large bank barn, modern 3 bedroom dwelling
 Large heated 3 car garage and workshop
 All Bldgs less than 20 years old.
 Must be seen to be appreciated.

We need listings at once for our Clients.
 May we place a Sold Sign on your Property?
 Partial list of Properties recently Sold
 140 A Dairy farm - Perry Co.
 90 A Gen. farm - Chester Co.
 75 A Dairy farm - Lancaster Co.
 30 A General farm - Chester Co.
 15 A Dairy farm - Lebanon Co.
 14 A Mobile Home Park - Lancaster Co.
 10 A Dairy farm - Lancaster
 Plus many other Wood Lots, Homes etc.

CHRISTIAN M. MOSEMAN
 Real Estate Broker
 734 Main Street, Akron, PA 17501
 717-859-1004 With 24 hour service
 or Paul Musser, 717-733-8107
 or James L. Marsh, 717-529-2678
 Dora A. Petrone, 717-394-2689
 Emma E. Gish, 717-653-5369
 Jay Douglas Marsh, 717-529-2678
 or Paul Smith, 717-933-8156

WIMPLE REALTORS... STATEWIDE FARMS

CENTRAL NEW YORK

225 ACRES TILLABLE on this 350 acre farm with 55 acres new alfalfa seeding. Barn has 55 ties, 3 silos, Patz cleaner, dumping station. Facilities for 20-25 calves. Good 5 bedroom home, 2 mobile homes. 43 Holstein milkers, 39 Y.S., 3 tractors, all machinery. \$265,000 JUST LISTED! CALL WIMPLE'S SLOANSVILLE HEADQUARTERS: 518-875-6355

SOUTHERN NEW YORK

7 MILES FROM THE PENNSYLVANIA LINE: 240 acre farm with 180 tillable and 25 acres of maple/oak woods. Barn has 72 free stalls, double 4 herringbone parlor, 2 new silos, (20x60 & 18x55 with unloaders), automatic bunk feeder. Beautiful 3 bedroom home. JUST LISTED! \$206,000 with machinery available. CALL WIMPLE'S TRUMANSBURG OFFICE: 607-387-9303.

ST. LAWRENCE VALLEY

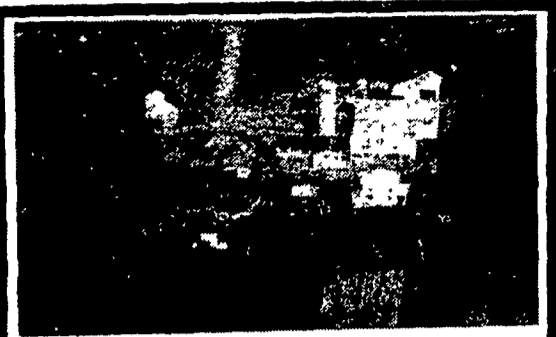
ALMOST COMPLETELY ASSUMABLE: qualified buyer would only need about \$8000 to buy this 231 acre level dairy that grows good alfalfa. Barn has 36 stanchions & 18 ties on pipeline, new 18x55 Madison silo, Patz cleaner, overhead grain bin. Ranch home has 3 bedrooms; built in 1979. JUST LISTED! \$104,000
 ATTRACTIVE FACILITIES FOR 177 HEAD on this 226 acre farm with 110 tillable. Barn has space for 132 head and milks 76 on 2" pipeline, (2) 20x50 & (1) 20x60 silos, all unloading, Patz cleaner, machine shed. Also 45 free stall barn. Nice Victorian home. Tenant house available. INCLUDES: 70 milkers, enough machinery for most dealerships. Asking \$355,000 OWNER VERY NEGOTIABLE ON PRICE & TERMS. CALL WIMPLE'S GOUVERNEUR OFFICE: 315-287-4163.

"HOT OFF THE PRESS" BRAND NEW FREE DAIRY CATALOGUES.

WE HAVE SEVERAL EXTRA LARGE FARMS AVAILABLE IN SEVERAL COUNTIES...

★ Please Call For Information or Appointment!

RICH BRANDT REALTORS
 2230 5th St. Highway, Reading, PA 19605
 (717) 274-3622 - office - (215) 378-1122



NOTICE NEW LISTING

85 acre dairy farm
 75 acres tillable
 Roaring Creek Twp., Columbia Co.
 Large 44x80 bank barn with new 43 stall dairy barn attached
 New milk house
 Large manure pit
 New 14x55 silo
 2 car garage
 Corn barn and cribs
 Large 2 1/2 story frame house, 3 rooms and bath downstairs, 4 rooms and bath upstairs, walk in basement, oil base board heat.
 Quick possession available
 Cows and Equipment
 For info. Call 717-354-6300

FARM FOR SALE
 79 ACRES More or Less
 1922 Quarry Road, Lebanon, Pa.
 Swatara Twp., Lebanon County, Pa.



THE HOME - Modern 5 Bedroom home, with 1 1/2 Baths, modern equipped Kitchen, 20'x30' Family Room, Dining Room, Living Room, over 2800 sq. Ft. of Living space heated by 4 Zone oil hot water furnace, 2 Car 33x28 attached Garage, Brick & Aluminum Siding with new Asphalt Shingle Roof.
 THE BUILDINGS - 37'x82' DUTCH BANK BARN with good weather boarding and galvanized metal Roof, Ideal for Horses, Beef Cattle or Hogs. The second floor has a large Hen House area and Hay Storage.
 IMPLEMENT SHED - 40'x40' with good frame weather boarding and metal Roof.
 HEN HOUSE - 12'x60' with individual compartments.
 DETACHED GARAGE - 20'x22' with frame siding, metal roof and fiberglass overhead Garage Door.
 CORN CRIB - 5'x48' about 13 Ft. High, in good condition, cement floor and metal Roof.
 THE LAND - Approximately 65 Acres of Cropland, 9 Acres of Woodland, the balance is meadowland
 SOIL TYPES AND PRODUCTION RATINGS
 NEB & NEC NESHAMINY - The Farm is made up of about 50 Acres of this type, production ratings: Corn 125 to 135 Bushels per acre, Corn Silage 25 to 27 Tons per Acre, Oats 75 to 80 Bushels per acre, Wheat 45 to 50 Bushels per acre, Alfalfa Hay 5 to 5 1/2 Tons per acre.
 MOB MOUNT LUCAS - This farm has about 10 Acres of this type, Production ratings: Corn 105 Bushels per acre, Corn Silage 21 Tons per acre, Oats 70 Bushels per acre, Wheat 45 Bushels per acre, Alfalfa Hay 4 Tons per acre.
 BRB BRINKERTON - The farm has about 9 acres of this type, Production ratings are Corn 90 Bushels per acre, Corn Silage 18 tons per acre, Oats 60 Bushels per acre, Legume Hay 2 1/2 Tons per acre.
 BKB & BKC BERKS - The Farm has about 8 Acres of this type, Production ratings are Corn 75 Bushels per acre, Corn Silage 15 to 16 Tons, Oats 55 to 60 Bushels per acre, Wheat 35 bushels, Alfalfa Hay 3 to 3 1/2 Tons per acre.
 OTHER INFORMATION - Zoned RR (Rural Residential) 8/82, over 1100 Ft. of hard road frontage along Quarry Road, Taxes \$1784.32, Northern Lebanon School District. Priced at \$289,000. Owner will subdivide to suit purchaser.

SUBURBAN REALTY
 30 W. Main St., Annville, PA 17003
 Phone 717-273-9358
 717-867-5221 717-867-4487

Call Realtor Associate Call Realtor Associate
 Pat Dundore 272-8331 Sandy Stormfeltz 665-3405