

## Assn. honors conservationists

(Continued from Page A34)

Greenway Association, hails from Berks County. The Association serves as a citizen's organization representing those who live in the Schuylkill River Basin, an area draining ten counties. Establishing a linear park or "greenway" along the river is the Association's goal. Toward this end, they have worked with local and county governments, urging the retention of public lands and including among their objective the enhancement of the scenic quality while promoting public recreational enjoyment in conjunction with present and future commercial, agricultural, residential, industrial and transportation uses.

Honored as Watershed Man of the Year was Claude Schickling of Clearfield County, a nurseryman by profession and a member of the Clearfield District Board. Having served as chairman and vice chairman, he was instrumental in the formation of the Little Clearfield Creek Watershed Association. Most of his work has been with coal companies operating in the watershed, local sportsmen's clubs and the new Millport Recreation Assn. The Little Sewickley Creek Watershed Assn. in Allegheny

County won the Watershed of the Year award. The Watershed includes all of the land drained by the creek and its tributaries — approximately 9 1/2 miles. The urban-located Association is sponsoring a detailed survey of the watershed, evaluating and cataloging the geology, soils, topography, hydrology and vegetation in the area.

Mr. and Mrs. Robert Karn of Bradford County won the Maurice K. Goddard Forestry award for the effort they have applied to their

own property which includes 70,000 trees planted in areas that were not producing other crops.

This year's Goodyear Awards went to the Dauphin, Lancaster and Northumberland Conservation Districts.

Other highlights of the conference include a Keynote address by DER Secretary Peter S. Duncan, a panel discussion on sewage sludge, a legislative session on "The Outlook for Conservation Districts," and computer utilization.



Mr. and Mrs. Robert Karn of Bradford County receive the Maurice K. Goddard Forestry award from Goddard, the former secretary of DER. The Karns have planted nearly 70,000 trees in areas that were not producing other crops.

## Farm Calendar



**Saturday, October 9**  
International Trotting and Pacing Association Pony Sale, Farm Show Complex, Harrisburg.  
Pa. Arabian Horse Association meeting, Elks Club, Boalsburg

**Monday, October 11**  
Poultry Servicemen's meeting, 6:30 p.m., Holiday Inn, Rte. 30, Lancaster

**Tuesday, October 12**  
York Co. Farm Tour, 8:30 a.m. to 3:30 p.m., bus leaves from North Mall.

Eastern Bradford NEBA Barn meeting, Duane Lewis Farm, Sugar Creek.

Inter-State District meeting, Woodstown, Salem and Bridgetown locals, 7 p.m., Elmer Grange Hall.

Inter-State District 16 Cumberland Co. local, 7 p.m. Newville Fire Hall.

**Wednesday, October 13**  
Dairymen, Inc. District 3 meeting, Carrol Co. Ag Center, 7 p.m., Westminster, Md.

Dairy Co-op, Inc. annual meeting, Hotel Syracuse, N.Y.

Northeast Pa. DHIA Supervisors meeting, Pink Apple Restaurant, Tunkhannock, 10:30 a.m.

Bradford Lamb Pool Wyalusing, Sales Barn, 9 a.m. to 11 a.m.

Penn State Sewage Sludge workshop, 9 a.m. to 3 p.m., Grantville Holiday Inn, Exit 28, I-81.

meeting 7 p.m., Vincetown Grange Hall, Vincetown, N.J.

**Thursday, October 14**  
Dillsburg Community Fair, Dillsburg, York Co. through Saturday.

Maryland Artificial Breeders open house, Frederick, Md.

Dairymen, Inc. District 2 meeting, 7 p.m. West Liberty United Methodist Church, White Hall, Md.

Northeast Extension staff meeting, Extension office, Towanda 9:30 a.m.

Inter-State District 24 Biglerville and East Berlin, 7 p.m., York Springs Fire Hall.

**Friday, October 15**  
Penn National Horse Show, Farm Show Complex, continues through next Saturday, October 23.

100th Annual Meeting of Pa. Veterinary Medical Association, Pocono Hershey Resort, White Haven.

York Co. Farmers' Association Fall Banquet, 7 p.m., Seven Valley's Fire Hall.

**Saturday, October 16**  
Pa. Shorthorn and Polled Shorthorn Breeders Association Keystone Autumn Classic Show and Sale, Woodside Farm, Waynesburg, 1 p.m.

NFO's Pa. State Convention, Lamar Holiday Inn, 11:30 a.m.

## ABSOLUTE GUN AUCTION

**WEDNESDAY, OCT. 13, 1982**  
At 6:30 P.M.

Pottstown, PA at Ridge Firehouse, west of Phoenixville, 3 1/2 miles east of the Rt. 23 and 100 intersection.

1873 Winchester. 32/20 engraved plus another in 44/40, 3 model 12 1-2's mod. 88, 96, 42, in 410 ga., 64 mod. 55, mod. 94, mod. 70 plus more fine Winchesters; Colts in every caliber, 357, 44, 32/20, 38 in Colt - python, police, and commander models. Plus a rare savage percussion figure eight north plus a 24 ga. percussion shotgun by John Kreider of Philadelphia, 4 WWII 9 mm German lugers, plus a Remington model 870 C trap, S & W mod.'s 61, 38, 27, 49, 51, Brownings in mod. Lightening super pose medalist plus many more. Over 130 handguns & rifles. Preview at (4:30 p.m.) No gun auction too large or small.

**KEN MOYER**  
Auctioneer  
"Your Specialist in Auctioneering"  
1285 Sheephill Rd.  
Pottstown, Pa. 19464  
(215) 323-7313

## NARROWS FEEDER CATTLE ASSOCIATION

1982 FALL SALES SCHEDULE

Tues., Oct. 12 Hereford & Exotic Calves  
800 Head

Tues., Oct. 19 Yearling Steers  
1000 Head

Tues., Oct. 26 Calves & Yearling (Steers & Heifers) 1000 Head

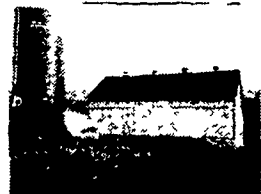
All Sales on Tuesday at 7:30 p.m.  
TEL-O-AUCTION AVAILABLE  
Sales to be held at  
Narrows Livestock Auction Market, Inc.  
Narrows, Virginia  
Phone (703) 726-2152 or 726-7230  
Phillip L. Morris, Mgr. — (703) 921-3586

## PUBLIC AUCTION MAHANTONGO VALLEY FARM

**SATURDAY, NOVEMBER 20, 1982**  
At 10:00 A.M.

1 mile South of the Village of Pitman in Eldred Township, Schuylkill County, Pa.; 5 Miles North of Hegins, turn East off Rt. 125 at Purple Pump Cafe; 11 miles Northwest of I-81, Exit 34.

**100 ACRE FARM**  
80 acres in high state of cultivation; 6 acres prime apple orchard; 10 acres wooded some trees of saw timber quality; balance pasture. Frontage on paved township road.



**20x50 HARVESTORE SILO with HERCULES UNLOADER - BANK-TYPE BARN with STEEL SIDING**

The lower level of this barn is presently set up for hogs, concrete slab and manure pit, 300 to 400 hog capacity; other farm outbuildings, no house, Spring Water.

TERMS: 10% down the day of sale, further terms and conditions to be announced when real estate is offered at 12 NOON.  
FOR INSPECTION CALL (717) 648-8518

**HARRY H. "LUT" WILLIER, JR.**  
and **FAE WILLIER**, Owners  
**FARM EQUIPMENT**  
Strouse & Strouse, Attorneys

George & Mike  
Auctioneer  
(717) 425-3313

**DEIBERT**

## PUBLIC AUCTION

**HORSE DRAWN VEHICLES & ANTIQUES**  
**SATURDAY, OCT. 16, 1982**  
At 10 A.M.

Swedesboro-Harrisonville Rd., Harrisonville, N.J. 3.5 miles N of Woodstown (just East of State Hwy. 45 at 13.5 mile)

High Wheel Gig; Runabout; Road Cart; Concord Spring Buggy built in Salem, N.J.; Harness; Harness parts; Collars; Fly nets; U.S. Calvary horse blankets; Polesevensers & single trees; Carriage jacks; Buffalo hide; Horse & Bear Carriage Robes; Brass Sleigh Bells; Lanterns-brass ship, Dietz RR, barn & carriage, Rayo driving (elect); 9'x9' Sarouk Oriental rug; Patterson tomato can (Salem N.J. c1864); Crocks; Cozy No. 12 Parlor stove; American Sheraton mahogany washstand, c1825; Refinished wagon seat; Walnut round table; Old decoys; M & E Blakeslee Empire shelf clock with wooden works; Buffalo Pottery pitcher & bowl set; Old Model A horns; Single cylinder gasoline motor; 3 speed & 10 speed bicycles; 2 Gravelly tractors (1 as is); Sears paint sprayer; and many other items.

TERMS: Cash day of sale - no checks  
Dallas R. Smith, III Auctioneer  
(609) 769-1319

## Eastern's purchase

(Continued from Page A1)

Eastern delegates and the 15-member Board of directors deemed the amended dairy price support program "discriminatory and adverse to dairy farmers and not in the public interest."

However, USDA dairy division director Ed Coughlin was on hand to explain why the program did not discriminate.

"Congress felt that a deduction from the sales of milk by all producers was the most equitable means of attaining some control over the current dairy surplus problem," Coughlin said.

"One of the primary comments on the deduction program that I keep hearing from milk producers is, 'Why should I be included, I don't contribute to the surplus,'" he noted.

"I don't recall any region raising objections to nationwide increases in dairy price support levels during the latter half of the 1970s," he said.

Coughlin explained that at one time the nation's fluid and manufacturing sectors were two separate groups.

"But that is no longer the case. Today, we have a single unified dairy industry."

The dairy division chief admitted that several farmers probably will boost milk output to offset the 50-cent deduction.

"If this is the position that farmers take and milk supply-demand situation is not brought back into a more favorable balance, we could very well see further changes in the price support program."

"In fact, if the current high level of dairy surplus continues, it could well jeopardize the whole price support program."

"Dairy farm bankruptcies will not necessarily get supply back in line with demand. Reducing the milking herd by one million cows will do the job," Coughlin emphasized.

He explained his department has been assigned responsibility for the program's administration because it is already involved in the marketing process for 68 percent of the nation's milk through 49 Federal Orders.

Coughlin outlined the major features for implementing the dairy collection plan:

✓ The responsibility to make and submit the deduction to the CCC will be on the person who actually makes payment to individual dairy farmers for their milk.

✓ Those responsible for making the deduction will be required to file a brief report on the milk volumes subject to the deduction.

✓ Payments to CCC are to be made at the time final payments are made each month to producers.