

Sale Reports

A public sale of antiques and furniture was held Oct. 2 by Eri and Edith Meyer Sr., north of Annville on Thompson Avenue, Lebanon Co. Six hundred forty items were sold in 8 hours before a big crowd.

Some prices included: 2 oak bedroom suites \$1750 & \$1500, pigeon-hole desk \$400, oak kitchen cabinet \$400, oak secretary-desk \$500, small spool table \$100, small tip zylophone \$240, 2 dark wood chests \$230 each, double green chest \$220 and blanket chest \$210.

Ebersole and Shoop were auctioneers.

xxx

A registered Holstein milking herd sale was held Sept. 29 by Long-Ray Farms, Raymond T. and Gladys I. Long, R1, Port Royal, Pa.

The top cow sold for \$3400 and 3 other cows brought \$2300 each. A first calf heifer sold for \$2400. The average of the 32 head of registered Holsteins sold was \$1782.

The auctioneer was Larry Long.

xxx

A public sale of real estate was held Oct. 2 by Paul L. Witmer and

Jane I. Witmer, along Weavertown Rd., 1 mile east of Reistville, Lebanon Co.

The 10 acres of farmland included a 2½ story limestone double

farmhouse, 3-car garage, large bank barn, corn and implement shed and chicken house which were sold for \$68,800 to James Weaver, Richland, Pa.

T. Glenn Horst and Timothy G. Horst were the auctioneers.

PUBLIC SALE OF 3 PARCELS OF REAL ESTATE SATURDAY, NOVEMBER 13, 1982 At 11:00 A.M.

Located East of Bethel along old Rt. 22, Bethel Township, Berks Co., Pa.

PARCEL #1: Known as Lot 25. Frame bank barn, frame corn & equip. shed on 19 acres of land. Terrain level to gentle slope. Access by private road.

PARCEL #2: Known as lot 26. 10 acres of open land on west side of Airport Rd. Terrain level to gentle slope. Road frontage along Airport Rd.

PARCEL #3: Known as lot 27. 9.5 acres of open land on east side of Airport Rd. Well & septic system. Terrain level to gentle slope.

ZONING: R - Rural District; IC - Industrial-Commercial District.

TERMS: 10% down day of sale, settlement by December 31, 1982. Inspection anytime. For appointment call HORNING FARM AGENCY, INC. @ 215-286-5183.

Terms by:

JAMES R. & HELEN K. HESS

Schlippert & Schlippert
Attorneys

Elton & Alvin Horning, Auctioneers
HORNING FARM AGENCY, INC.
Main St., Morgantown, Pa. 19543

PUBLIC SALE OF 67 ACRE FARM, COWS & EQUIPMENT SATURDAY, NOVEMBER 6, 1982 At 10:00 A.M.

Located between Milton & Turbotville, Turbot Twp., Northumberland Co., Pa. Take Rt. 147 to Rt. 254 E. to Stamms Dairy Store, turn left to Hoy Rd., turn right one mile to property.

REAL ESTATE @ 11:30 A.M.

2½ story frame house, 11 rooms incl. 2 kit., 5 bedrms., 1½ baths. Coal heat. Frame bank barn, 11 stanchions, remainder loose housing for 30 head. 400 gal. milk tank. Other out-buildings in poor condition. 2 Madison 14'x40' silos. 55 Acres of tillable land, 12 acres pasture. Terrain - rolling.

TERMS: 10% down day of sale, settlement by Jan. 15, 1983. Inspection anytime by appointment. Call Horning Farm Agency, Inc. @ 215-286-5183 or Titus Snader, RD #2, Milton, Pa. @ 717-437-2714.

Terms by:

HENRY & BARBARA YODER

Elton & Alvin Horning, Auctioneers
HORNING FARM AGENCY, INC.
Main St., Morgantown, Pa. 19543



PUBLIC AUCTION

OF FARM EQUIPMENT MONDAY, OCTOBER 11

At 12:00 Noon

Locator: Take Route 272 North from Ephrata to Route 897, take Route 897 North to Reinholds, after crossing the railroad tracks in Reinholds take 2nd road left "Swamp Bridge Road" to 2nd farm on right "Feed Mill Farm #4", West Cocalico Township, Lancaster County, PA.

Due to the undersigned discontinuing their farming operations, the following items will be offered for sale at Public Auction.

CASE 1175 AGRI-KING DIESEL TRACTOR

with Cab and 16.9x38 Duals.

CASE 1070 DIESEL TRACTOR w/CAB NEW HOLLAND MODEL 1495 SELF-PROPELLED HAYBINE NEW HOLLAND 851 AUTO-WRAP ROUND BALER

CASE 7-TOOTH SOIL CONTROLLER
CHISEL PLOW; RHINO 13-FT. DISC HARROW ON TRANSPORT; WHITE 5400 4-ROW AIR PLANTER WITH MONITOR; VICON 7-FT. DISC MOWER CONDITIONER; 2 14-FT. Flatbed Wagons; Case Model 200 4-Row Cultivator; Sprarite Ground Plane 3-pt. Sprayer; Brillion Sure Stand Cultipacker Seeder; 3-pt. Round Bale Mover; Pequea 7-FT. PTO Hay Tedder; John Deere Model 640 Hay Rake; John Deere FB 177-B 17x7 Grain Drill; New Idea Tandem Axle Single Beater Manure Spreader; 8-Row Trailer Type Crop Sprayer; Lely 3-pt. Fertilizer Spreader; Chattanooga 10-ft. Cultipacker; Massey Ferguson 3-pt. 4-Row Cultivator; Brady Model 1440 12-Ft. Stalk Cutter; Oliver 16-Ft. Spring Harrow with 4-Ft. Wings;

44 ACRES STANDING CORN DONAHUE EQUIPMENT TRANSPORT TRAILER 28 feet long x 9 ft. 8 in. wide 20 x 60 FICKES SILO

Complete with Outside Ladder, Pipe and Distributor to be removed by purchaser. 20-FOOT SILOMATIC DOUBLE AUGER SILO UNLOADER.

BER VAC 876 SNOW BLOWER ROTO GRIND TUB GRINDER

with 75 H.P. 3 Phase Motor or Tractor PTO. 6 10-ft Star Concrete H Bunk Sections; Hog Waterer; 12 Bag Soybean Seed; 11 bu. Hart Wheat; 6 gallon Treflan Herbicide; Electrical Supplies; Used Lumber; Stone Picker Bucket; Small Air Compressor and other items.

There will be very few small items. Equipment will be sold soon after Auction begins.

Auction by order of

DUTCHLAND LABORATORIES, INC.

R.D. #2, Denver, PA. 215-267-4921
Auction Conducted by
John E. and Paul E. Martin Auctioneers
(717) 733-3511 - (717) 733-3305
Ephrata, Pa.

AUCTION

SCHOOL DESKS & CHAIRS, GYM EQUIP. & SUPPLIES FOR THE SOUDERTON AREA SCHOOL DISTRICT

From various schools within the district. To be held at the Summit Street School

SATURDAY, OCTOBER 16, 1982
10 A.M.

Wall unit climbing apparatus, trampoline, A.B. Dick 212 ditto machines, large spring boards, dental chair w/accessories, large floor standing paper cutter, Thomas 8-position collator, Wallensak reel to reel recorders, A.B. Dick 525 mimeograph machine, pictures, Bauseh & Lomb Telebinocular, Globes of the world, 100's of desks and chairs, lighting fixtures, rear screen projection carts, microphone amplifier unit for microphone, trumpets, clarinets, trombones, 10' wooden table, 8' table (rubberized top), carpetmatic carpet shampooer, portable science cabinet with sink, 3M photocopier, Rheem califone listening station (no serial #), curriculum materials, motion picture projector #108028, teacher's desks, manual duplicator machine, B/W TV's, transistor intercom set, trash compactor, light fixtures, TV stand, 2 metal coat racks, checkwriter-Protectograph Model 60, GE Refrigerator, Savin 220 copier, water cooler, chin bar on metal floor frame, chin bar to mount on wall, ping pong tables, padded flat horse, rolls of burlap, file on wheels, set of bleachers (5 rows high), SS low table, fluorescent light tubes, lift top desks, workbench, piano (full keyboard), wall maps, technicolor film loop projectors, filmstrip, previewer, filmstrip projector, jack sets, earphone/head sets in carrying case, assorted kindergarten toys, ceiling light fixtures, floor abacus.

This is a partial listing of many fine school items being offered.

Terms - Cash

Paul G. Derstein

Auctioneer

Hatfield Gallery Auction

368-6646

81 ACRE LANCASTER COUNTY FARM

Offered At

PUBLIC AUCTION

In the Estate of
Conral C. Callis

Located in Penn. Township, along Fruitville Pike, 3 miles south of Manheim, Pa.

WEDNESDAY, OCTOBER 20
2:00 P.M.

Tillable Land in High
State of Cultivation

Two 2½ Story Family Dwellings
(Stone & Frame)

47'x90' Frame & Stone Bank Barn

4000' Metal Implement Shed
(3 Years Old)

3450' Concrete Block & Frame
Garage & Storage Buildings

2 Butler Grain Drying Bins

Other Improvements

For additional information on terms & more features on real contact auction firm.

Auction For

CONRAL C. CALLIS ESTATE
Manheim National Bank, Executor
M. Elvin Byler, Attorney



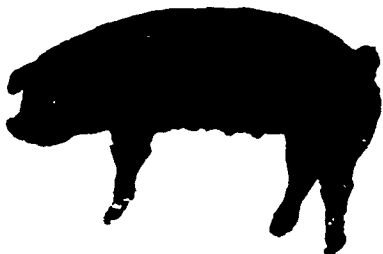
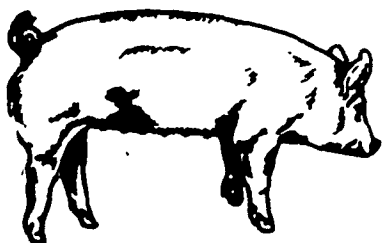
Auction Conducted By The:
J. Omar Landis Auction Service
J. Omar Landis & Jay M. Witman
Box 501, Ephrata, PA 17522
717-627-0789 or 665-5735

ARNOLD'S 24TH PRODUCTION SALE

OF

Yorkshires

Durocs



Auctioneer: Harry Bachman, Annville, PA

APPROX. 70 BRED GILTS (All gilts are hand mated)

25 Yorkshire - bred Yorkshire,

30 Landrace bred Duroc or Yorkshire,

15 Duroc bred Duroc

Due November - December - early January

40 BOARS (Seven to eight months old)

Feed efficiency & Test Station Information

25 Yorkshire — 15 Duroc

50 OPEN GILTS (Ready to breed)

YORKSHIRE, CROSSBRED, DUROC

Soundness and production are top priorities in our breeding program. Our Yorkshire herd is unsurpassed in production per sow for herds this size. Our animals have done well in test stations. Pennsylvania's 1st Superior Certified Duroc Meat Sire came from our herd. We also had the top indexing boar over all breeds, Pa. State 1979 ("Hustle") and the top boar in Delaware 1980 (Explorer). All animals vaccinated for Erysipelas & Lepto & Rhinitis. Validated Brucellosis & Pseudorabies Free herds.

Friday Evening

NOVEMBER 5, 1982, 6:00 P.M.

SALE TO BE HELD AT THE

Lebanon Area Fairgrounds

(CORNWALL & EVERGREEN ROADS, 1½ MILES SOUTH OF)
Lebanon, PA

CALL OR WRITE

Yorkshires

Leon L. Arnold, R.D. 7, Box 705

Lebanon, PA 17042 — 717-273-5880

Durocs

Lawrence Arnold, 1245 Cumberland St.

Lebanon, PA 17042 — 717-272-9827

Farm 272-2179

CATALOGUES AVAILABLE OCTOBER 15
NEXT SALE FEBRUARY 12, 1983