

# Hog inventory lowest since 1975

**HARRISBURG** — Inventory of all hogs and pigs on Sept. 1 in the 10 states conducting quarterly hog surveys is estimated at 41.6 million head. This number is 12 percent below last September and 15 percent less than Sept. 1, 1980, according to the Pennsylvania Crop Reporting Service.

The 10 quarterly states are Georgia, Illinois, Indiana, Iowa, Kansas, Minnesota, Missouri, Nebraska, North Carolina and Ohio. This is the lowest Sept. 1 inventory for the 10 states since 1975.

Breeding inventory at 5.55 million head is 13

percent less than year ago and 15 percent below two years earlier, the second lowest breeding inventory during the past 10 years. Market hog inventory, at 36.1 million head is 12 percent below last year and 15 percent less than in 1980. This is the lowest Sept. 1 market hog inventory since 1975.

The June-August 1982 pig crop was 16.2 million head, 11 percent less than last year and 10 percent below two years ago. There were 2.19 million sows that farrowed during June-August, a decrease of 11 percent from a year ago

and 13 percent from the same period two years ago. Sows farrowing averaged 7.39 pigs per litter compared with 7.37 last year and 7.18 two years ago.

Hog producers in the 10 quarterly states intend to farrow 2.17 million sows during September-November of this year, 10 percent less than during the comparable period in 1981 and 17 percent less than two years ago. Farrowing intentions for December 1982-February 1983 quarter are 1.90 million head, four percent below the same period a year earlier and 13 percent below two years ago.

## PUBLIC AUCTION

**TRACTOR — EQUIP. — FURNITURE  
ANTIQUES — TOOLS & FEED**

The undersigned having sold their farm will sell the following on the premises known as 1513 Baldwin Mill Rd., Harf. Co., Jarrettsville, Md. (2 miles South of Jarrettsville) ON:  
**SATURDAY, OCTOBER 16, 1982**

AT: 9:30 A.M.

**EQUIPMENT** — Farmall H tractor, gas, hyd. lift, good rubber w/N.I. loader w/bucket & 5 ft. snow scoop; N.I. 12A 95 bu. ground driven manure spreader; N.I. hay rake, rubber tired; 3 x 5 rubber tired trailer w/racks; Ontario ten dis. drill w/fert./seed, I.H.C. pull type 28 disc harrow, 4 sect.; I.H.C. 2 row corn planter; I.H.C. 2 bottom pull type plow; steel wheel hay rake; Myers sprayer w/booms & 2 barrel rack; steel wheel hay wagon; 8 ft. 2 wheel trailer; 2 sect. spike tooth harrow; cellar scoop; 2 old N.I. manure spreaders; horse drawn; lrg. Cypress water tank; 3 single bottom horse plows; single row 2 horse cultivator, steel wheels; 2 dbl. & single shovel plows; 8 in. burr mill; hammer mill w/bagger & screen; corn sheller; 15 single & dbl. trees; 40 ft. belt; seed cleaner; F.M. platform scales; chicken equip. - 10 crates; 2 brooder stoves; many assort. feeders; egg washing machine; 20 egg baskets; egg scales; egg grader; 100 steel fence posts; chicken nests; old horse harness; 10 cedar posts; many baskets; 3 wheel barrows; 15 cow stanchions; 20 sheets of used roofing, 12 ft.; 2 gates; wooden barrels; lrg. lot of dried lumber - 2x4, 1x6 lng.; approx. 2,000 B ft. poplar and oak; door track; 20x40 & 20x20 canvases; hay rope; brace wire; chicken wire; 4 roll snow fence; fence charger.

**FEED** - 275 bales of mixed hay; 150 bales wheat straw.

**TOOLS** — Air compressor on cart w/25 gal. tank; air grease gun; 2 Remington 59 cc chain saws 20 in.; 2-20 ton yd. jacks; B & D circular saw; 3/4 drill; elec. edger; elec. sander; anvil & stump; sandstone grinder; elec. drill sharpener; elec. hot glue gun; wood lathe; calibrator and compasses; router w/bits; tilt arbor tbl. saw w/elec. motors; saws, hammers, pliers, wrenches, hoes, rakes, breast drill; wood chisels; can hooks; cross cut saw; drill set; C clamps; furniture clamps; shovels and bars; 34' and 20' ext. ladders; taps and dyes; set of sockets; set of pipe threaders; 2 garden sprayers; post hole digger; brace bits; 100 boxes of assort. bolts and screws; ext. cords; elec. fence insulators; vise; push mower; 5 log chains; many other small items.

**ANTIQUES AND HOUSEHOLD GOODS** - V.G. 1 horse sleigh w/ornate painting & stays; oak BR suite w/highback carved full bed, dresser w/mirror & washstand; oak Larkins drop front desk w/oil lamp holders & mirror; child's roll top desk; 2 oak plank bottom chairs w/spooled wing back; oak chairs; 2 spooled blanket racks; pie safe; oak washstand; sleigh bed; set of oak spooled back chairs; oak cane seated rocker and straight chair; oak tbl.; oak pedestal stand; 2 coat trees; pine butter churn; child's oak carved chair can seat; bowl and pitcher set; old wicker & oak slatted baskets; ornate metal youth bed; 2-2 gal. crocks; 2 lrg. crocks; treadle sewing machine; oak chest of draws; Atwater Kent radio; old jars; oak pressed back chair; 8 flat irons; 2 broad axes & 3 lrg. chisels; china closet; chunk stove; cream separator; old big wheel bicycles; butcher tools; large press; sausage grinder & press; apple peeler; 2 elec. butter churns; child's blackboard; oak dresser & mirror; 3 cabinets; maple chest of drawers; oak scalding cooker; hog scalding cooker; 2 bath tubs; ox yoke; agate ware; shoe lathe and nail box; set sleigh bells; 2 cream cans; copper tea kettle; milk cans; store tins; horse collar; apple picker; Kennedy rocker; harness stitching bench; carved flowered side tbl. w/Wm. & Mary base; assort. flower pots & stands; wooden spoke wheels; 2 sleighs, 1 antique; iron dinner bell; McCoy red wagon; gold guild edge mirror; guild edge picture & frame; Lincoln rocker; several flowered rugs; pink depression; lamps & lamp shades; sofa & chairs; utility stand; kit. tbl. & 4 chairs; metal hutch; bookcases; encyclopedias; sink; fan; picnic tbl. & benches; roaster; pots and pans; shutters; folding tbl.; med. cabinet; platform rocker; mag. rack; walnut veneer wardrobe; Whirlpool upright freezer; many other items.

**AUCTIONEER'S NOTE:** This is a collection of many years. Some items are antique. Sale will start at 9:30 AM with Equipment and Tools; Antiques and Furniture sold after 12 Noon.

**NOT RESPONSIBLE FOR ACCIDENT DAY OF SALE**

**TERMS: CASH OR PERSONAL CHECK W/PROPER ID**

**ALL ITEMS SOLD AS IS**

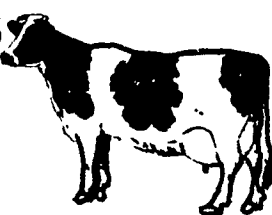
**LUNCH SERVED**

Owners,  
**MILTON C. BREIDENBAUGH  
MARY C. BREIDENBAUGH**

**WILLIAM H. AMOSS, AUCTIONEER**  
Complete Auction & Appraisal Service  
2037 Pleasantville Road  
Fallston, Maryland 21047  
PHONE: 879-7272

## JUDY FARMS DAIRY HERD DISPERSAL

**FRI. OCT. 15**  
at 7:30 P.M.



at Penns Valley Livestock Auction,  
Centre Hall, Pa. at the intersection of Rt.  
45 and 144.

69 Head, 38 Cows in all stages of lactation. 7 Purebreds, 31 Heifers all stages, 7 Purebreds. Some of the sires represented include: New Hope, Matador, Pabst, Van, Jet Stream, Gay Ideal, Presto and Ace.

Health charts furnished

**RUSSELL AND BARB JUDY**

Bellefonte, PA

814-383-4594

814-383-4266

Ron Gilligan, Auctioneer

Scott L. Yocum

Penns Valley Livestock Auction

814-364-9096

## PUBLIC AUCTION

**OLD HOUSEHOLD ITEMS, NEW HARDWARE  
TOOLS & SUPPLIES**

To close-out the old **WILLIAM L. FOARD BLACKSMITH SHOP** - begun circa 1883 - the undersigned Owners will sell the following at Public Auction at the shop located at 3704 ROCK RUN ROAD in the Village of LEVEL, opposite the Fire Company - off of Md. Rte. #155, 9 mi. West of Havre de Grace and 3 mi. East of Churchville - in the 2nd Election District of Harford County, Md., on

**MONDAY, OCTOBER 11, 1982**

(Columbus Day Holiday)

At 10:00 A.M.

**OLD & ANTIQUE** - 1 Gal. Elec. & 2 Gal. Hand Ice Cream Freezers; Camel Back Trunk; Pine Table; Old Picture of Local Interest; Silver Plated Items; Lard Press; Can Capper; Meat Grinder; Tin Ham, Wash & Canning Boilers; Old Door Hardware; Croquet Set; Feed Bags; "FOARD BROS." Signs; 1/2" Rev. Elec. Hand Drill; Hand Drill Press; Saddle-Seat Grind Stone; Hand, Lawn, Garden and Shop Tools & Supplies; Buggy & Wagon Bolts and Parts; Chicken Feeders & Waterers; Doors & Windows; 100 sq. ft. Used Oak Flooring; Horse-drawn OLIVER 40 Plow Parts; Tool Handles; Tobacco Tins & Agri. Boxes; Wooden Dove-tailed/Hinged Boxes; many other interesting old collectibles.

**NEW MERCHANDISE:** there are several to many Lots of the following: Cotter Pins - 3/16" to 1/4"x2"; Lag Bolts - 1/4x2" to 1/2x6"; Nuts - 1/4" to 3/8"; Machine Bolts - 1/4" x 2" to 4"; Cap Screws - 1/4" x 1" to 3"; Hex Screws - 3/8" to 1/2" x 1" to 13"; Carriage Bolts - 1/4" to 1/2" x 1" to 9"; Carriage Screws - 5/16" to 5/8" x 1" to 8"; Stove Bolts - 1/4" to 1/2" x 1/2" to 2" - Round and Flat Head; Flat Washers - 1/4" to 1"; Lock Washers - 1/4" to 3/4"; Ass't'd Files - 4" to 10"; Bush Axes; Adzes; Scythes - 20" to 26"; Stable Brooms; Gate Hooks; Sq. Hooks; Ass't'd Hinges - 2" to 18"; Screw Hooks; Repair Links; Ass't'd Grab Hooks; Sickles; Ass't'd. Fit Axes; Hatchet, Shovel Handles; Pitch Forks; Post Hole Diggers; Straight, Bent & Dble. Bit Axes; Sledge Hammers; Barn Scraper; Picks and Maddocks; Pick & Maddock Heads; Swivel and Open-eye Snaps; Roll Solder; Wood Bits - 1/4" to 5/16"; Fencing Staples; Roofing Nails - 2"; 4 penny to 60 penny Nails; 8 & 10 Penny Finishing Nails.

**TERMS: CASH OR APPROVED CHECK.**

Owners:

**JERRY AND BESSIE GILBERT**

Level, Maryland

301-734-7460

Auctioneers:

**JOHN H. O'NEILL**

Forest Hill, Md.

301-838-6980

**K.C. TRAVERS, Aberdeen, Md.**

LUNCH Provided on Day of Sale by the Ladies

Aux. of the Level Vol. Fire Co.

Not Responsible for Accidents on Day of Sale.

## Sale Reports

A public auction of farm machinery was held Oct. 2 by Mr. and Mrs. Paul R. Rice, 1 mile south of Mt. Pleasant Mills, Snyder Co.

Some prices were:  
Farmall 544 gas tractor

\$3300, Ferguson 20 tractor and loader \$900, 1969 Ford 3/4 ton pickup \$520, 1966 Ford 5 ton truck \$450, 3-bottom plow \$100 and Ferguson plow \$65.

Earl Eash was the auctioneer.

## PUBLIC SALE

**OF PERSONAL PROPERTY**

at 1010 L.W.W. Franklin Co. Chambersburg, Pa. 1 mile west of Chambersburg, Pa. on Route 30 at The Pa. National Guard Armory on

**THURSDAY & FRIDAY  
OCTOBER 21 & 22, 1982**

9 A.M. Each Day

**ANTIQUES**

Walnut marble top stands, dressers & washstands; Colonial walnut trim sofas; walnut rolltop desk with top; oak double ice box; carved doors; brass hardware, a beauty; E. Terry & Sons carved mantel clock. 96 piece set of Bavaria china dishes; R.R. lights; many pictures; toys.

**NOTE:** These items from the home of the late Enos H. Horst. Inspection sale days. For detailed listing send stamped, addressed envelope to J. Robert Meyers, 440 Ramsey Ave., Chambersburg, Pa. 17201.

Terms - Cash.

Auctioneer & Manager

**J. Robert Meyers**

Lunch available

Thomas G. & Nancy H. Burkey

## EVENING SALE OF HOLSTEIN CATTLE

**PLUS TRUCK - ELEV.**

On the Harry Hawbaker farm located west of Chambersburg, Pa., turn north off Rt. 30 on first road west of Shively Motors at Jennings Used Car Lot "Crottletown Road" one mile to farm, watch for signs, leave Rte. 81 at Exit 6, follow Rte. 30 west on

**FRIDAY EVENING, OCTOBER 22, 1982**

Sale at 7:00 P.M.

**42 REGISTERED AND GRADE HOLSTEINS**

18 Registered - 24 Grades - Tested within 30 days. 37 head of first calf heifers of which about 12 will be fresh by sale. Many close springers, bal. due late fall; Standout Job dtr., due with third calf in Nov.; another heifer due with second calf; other sires of Reg. animals inc. Sagesar Chief Astronaut, Cumva Proud Performer, Simpson Burkgo Snowman, Star Summit Elite, Char-Sam Elevation Pabst, Cedar Grove Golden Nugget, Country Home Astro King, Anastasis Elevation Spunky, Cooperfield Sir Pat Hope and other sires; 3 Reg. open heifers, 1 by Penstate Ivanhoe Star out of Marvex dam, others by Arlinda Jet Stream and Big-Rock Athey Scout. Many of bred heifers carry service of reg. bulls. A choice group of heifers with plenty of size and quality. Don't miss this sale. Vacc. for Lepto and I.B.R.

**1972 DIAMOND RED TRUCK WITH DUMP BED**

Has Gold Comet 200 engine, low mileage, 33,000 lb. G.W., power steering, air brakes, 5 plus 2, trans., 10.00-20 tires, Deluxe cab with 19 ft. hay and grain dump body, 52 in. grain sides with cattle racks, 25 ton twin cyl. hoist. Also selling 24 ft. Ind. type elev. with 1 h.p. motor; IH 504 diesel utility tractor w/2001 loader. These items offered at 7:00 P.M.

Catalogs available; Terms Cash or Good Checks; Lunch at Sale; Sale inside.

**NATHAN & LAURA HAWBAKER & FAMILY**

2025 Crottletown Road  
Chambersburg, Pa. 17201

Ralph W. Horst Auctioneer & Sale  
Manager, Box 103, Marion, Pa. 17235

Fred M. Naugle, Pedigrees

W.W. Gossert, Clerk

Phone (717) 264-8656