

Special Feeder Cattle

Abington, Va.
Tuesday, Sept. 28

548 head.
Steers: Medium-1 & Large-1 300-400 lbs. 60.00-70.00; 400-500 lbs. 59.50-71.00; 500-600 lbs. 57.00-64.50; 600-700 lbs. 55.00-57.75; 700-800 lbs. 57.25. Small-1 300-400 lbs. 50.00-59.00; 400-500 lbs. 50.00-55.00; 500-600 lbs. 50.00-54.50; 600-700 lbs. 53.50. Med.-Lg.-2 300-400 lbs. 58.00-67.00; 400-500 lbs. 56.00-57.00; 500-600 lbs. 56.00-62.00; 600-700 lbs. 54.50-56.50.

Heifers: Medium 1 & Large-1 300-400 lbs. 46.00-51.00; 400-500 lbs. 44.00-55.50; 500-600 lbs. 45.00-50.00; 600-700 lbs. 45.00-47.00. Small-1 300-400 lbs. 42.00-42.50; 400-500 lbs. 42.00-46.00; 500-600 lbs. 41.00-42.50. Med.-Lg.-2 300-400 lbs. 43.50-45.00; 400-500 lbs. 43.00-46.50; 500-600 lbs. 43.00-44.25.

Special Feeder Cattle

Marshall, Va.
Thursday, Sept. 23

701 head.
Steers: Medium-1 400-500 lbs.

66.00-72.00; 500-600 lbs. 65.50-69.00; 600-700 lbs. 63.00-69.50; 700-800 lbs. 63.50-64.50. Large-1 400-500 lbs. 72.00-74.50; 500-600 lbs. 62.50-69.00; 600-700 lbs. 65.50-67.50; 700-800 lbs. 63.50-64.00. Small-1 300-400 lbs. 60.00-68.00; 400-500 lbs. 62.50-72.50; 500-600 lbs. 64.00-68.00; 600-700 lbs. 62.50-68.50. Med.-Lg.-2 400-500 lbs. 60.00-64.50; 500-600 lbs. 60.00-65.00.

Heifers: Medium-1 400-500 lbs. 50.50-56.50; 500-600 lbs. 50.00-56.50. Large-1 400-500 lbs. 50.00-56.00; 500-600 lbs. 50.00-56.50; 600-700 lbs. 50.00-57.00. Small-1 300-400 lbs. 45.50-46.00; 400-500 lbs. 45.00-55.50; 500-600 lbs. 44.50-49.00. Med.-Lg.-2 500-600 lbs. 49.00-50.00.

Special Feeder Cattle

Harrisonburg, Va.
Wednesday, Sept. 29

347 head.
Steers: Medium-1 500-600 lbs. 58.00-61.50; 600-700 lbs. 58.60; 700-800 lbs. 46.00-61.75; 800-900 lbs. 55.50-59.25; 900-1000 lbs. 54.50-57.00. Large-1 700-800 lbs. 55.50-60.00; 800-900 lbs. 54.00-58.50; 900-1000 lbs. 50.00-54.50; 1000-1100 lbs. 53.00-56.00. Small-1 400-500 lbs. 56.50; 500-600 lbs. 52.50; 600-700 lbs. 54.00-57.00; 700-800 lbs. 42.25-60.50; 800-

900 lbs. 54.50-56.00. Med.-Lg.-2 500-600 lbs. 47.00-54.00; 600-700 lbs. 47.50-52.50; 700-800 lbs. 47.50-56.00; 900-1000 lbs. 50.00-51.00.

Special Feeder Cattle

Wytheville, Va.
Friday, Sept. 24

586 head.
Steers: Medium-1 400-500 lbs. 61.00-68.00; 500-600 lbs. 62.75-68.50; 600-700 lbs. 65.10-67.50; 700-800 lbs. 62.75-65.00; 800-900 lbs. 55.50-59.10; 900-1000 lbs. 54.75-55.70. Small-1 400-500 lbs. 58.50-65.00; 500-600 lbs. 56.75-63.50; 600-700 lbs. 60.00-67.00; 700-800 lbs. 57.25-66.50; 800-900 lbs. 55.30. Med.-Lg.-2 400-500 lbs. 61.00-64.00; 500-600 lbs. 62.00-66.00; 600-700 lbs. 61.20-62.25; 700-800 lbs. 56.00-58.30; 800-900 lbs. 54.50-56.85; 900-1000 lbs. 56.00-57.00; 1000-1100 lbs. 54.75.

Feeder Pigs

Madison Mills, Va.
Tuesday, Sept. 28

Receipts: 1,474.
US1 & 2: 30-39 lbs. 135.00-140.00; 40-49 lbs. 141.00; 50-59 lbs. 137.00; 60-69 lbs. 120.00; 70-84 lbs. 118.00; 85-99 lbs. 103.00.
US 3: 30-39 lbs. 126.00; 40-49 lbs.

Special Feeder Calf

Cortland, Va.
Monday, Sept. 27

118.00; 50-59 lbs. 118.00; 60-69 lbs. 118.00; 70-84 lbs. 104.00; 85-99 lbs. 103.00.
Utility & 4: 30-39 lbs. 92.00; 40-49 lbs. 70.00.

153 head.
Steers: Medium-1 & Large-1 300-400 lbs. 64.00-64.50; 400-500 lbs. 64.75-65.00; 500-600 lbs. 63.75-65.75; 600-700 lbs. 60.25-63.75; 700-800 lbs. 59.25-61.50; 800-900 lbs. 58.75-59.75; 900-1000 lbs. 58.75. Small-1 300-400 lbs. 59.00; 400-500 lbs. 58.00-61.25; 500-600 lbs. 56.50-58.75. Med.-Lg.-2 300-400 lbs. 59.00-60.00; 500-600 lbs. 58.50; 600-700 lbs. 56.75.

Heifers: Medium-1 & Large-1 300-400 lbs. 52.25-55.75; 400-500 lbs. 54.00-57.25; 500-600 lbs. 50.00-55.50; 600-700 lbs. 50.00-52.00; 700-800 lbs. 50.00-53.00. Small-1 400-500 lbs. 51.00; 500-600 lbs. 50.25; 600-700 lbs. 51.00. Med.-Lg.-2 300-400 lbs. 53.50; 400-500 lbs. 51.00-54.00; 500-600 lbs. 48.50.

Special Holstein Steer Sale

Harrisonburg, Va.
Tuesday, Sept. 28

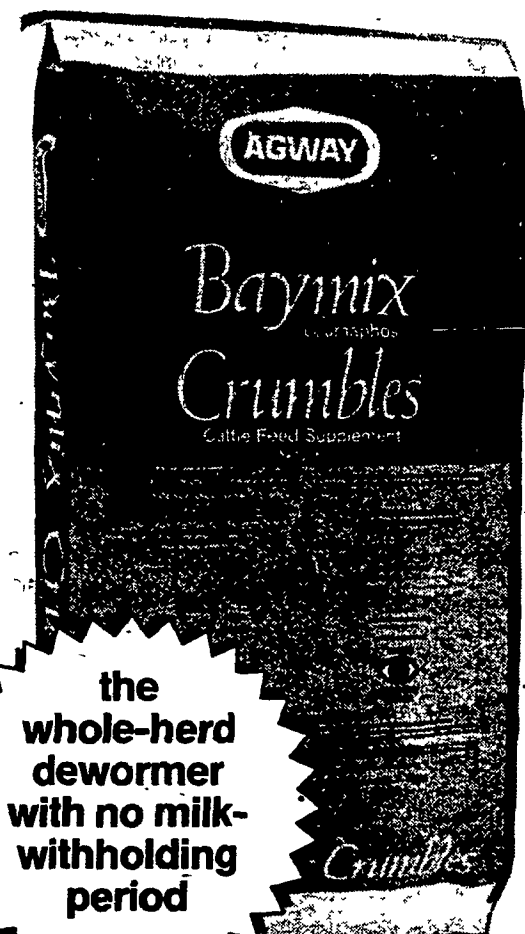
1,642 head.
Steers: Medium-1 300-400 lbs. 50.00; 400-500 lbs. 47.00-52.25; 700-900 lbs. 44.25-52.00; 900-1200 lbs. 43.75-47.00. Large-1 500-600 lbs. 48.75-53.00; 700-900 lbs. 46.00-47.75; 900-1200 lbs. 46.00-47.50. Med.-Lg.-2 300-400 lbs. 46.00-51.00; 400-500 lbs. 46.00-51.00; 500-600 lbs. 45.00-51.50; 700-900 lbs. 52.50-56.75.

Special Feeder Cattle

Narrows, Va.
Tuesday, Sept. 28

1,428 head.
Steers: Medium-1 & Large-1 400-500 lbs. 64.00-67.00; 500-600 lbs. 61.50-65.25; 600-700 lbs. 63.50-68.75; 700-800 lbs. 59.75-65.25; 800-900 lbs. 56.25-60.00; 900-1000 lbs. 56.25-60.00. Small-1 400-500 lbs. 59.00-64.50; 500-600 lbs. 62.75-64.50; 600-700 lbs. 59.00-61.25; 700-800 lbs. 58.50-60.25; 800-900 lbs. 55.00-57.00. Med.-Lg.-2 400-500 lbs. 61.00-64.50; 500-600 lbs. 62.25-66.00; 600-700 lbs. 59.25-61.50; 700-800 lbs. 55.00-57.75; 800-900 lbs. 55.75.

(Turn to Page A13)



WIN 5 BAGS OF AGWAY BAYMIX CRUMBLES

Unlike dewormers used only at freshening, Agway Baymix Crumbles can deworm your entire herd at one time. Easy to use—just topdress on feed for six consecutive days, once in the fall and again in spring to break the worm cycle. And, best of all, Baymix requires no withholding of milk.

ENTER THE AGWAY BAYMIX SWEEPSTAKES TODAY

No purchase necessary. Just fill out and mail the entry blank below and you could win 5 bags of Baymix absolutely free. One winner per Agway Retail Sales area, 24 winners in all. Entries must be received no later than October 31, 1982.

BAYMIX SWEEPSTAKES

Please enter my name in the drawings for 5 free bags of Agway Baymix Crumbles. I understand there is no obligation on my part.

Mail your entry to:
Agway Inc.
Baymix Sweepstakes
P O Box 4741
Syracuse, NY 13221

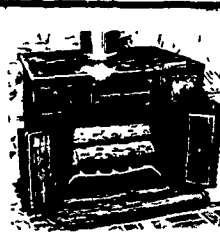
NAME _____
ADDRESS _____
TOWN _____ STATE _____ ZIP _____
NEAREST AGWAY STORE _____

(CUT ALONG DOTTED LINE)

CONTEST RULES
1 No purchase is necessary. Void where prohibited by law. 2 There will be one winner per Agway retail sales area—24 winners in all. 3 Each winner will receive five (5) bags of Agway Baymix Crumbles. 4 Entries must be received by October 31, 1982. (One entry per farm). 5 No responsibility is assumed for improperly addressed, misdirected or lost mail. 6 A random drawing of all entries will be held November 12, 1982 by Northrup & Teel, Inc., whose decisions are final. 7 There are no alternative prizes and no cash equivalents. All prizes will be awarded.

8 All winners will be notified by registered mail. 9 To claim a prize, winner must produce registered letter and identification at their local Agway Farm Store before November 30, 1982. 10 Unclaimed prizes will be awarded by a second random drawing to be held, if necessary, on December 6, 1982. Odds of winning will be based on the number of unclaimed prizes and the number of remaining entries received as of October 31, 1982. 11 For a list of prize winners, mail a stamped self-addressed envelope to Agway Inc., Baymix Sweepstakes, P O Box 4741, Syracuse, NY 13221.

AGWAY answers your needs



Hydro Heater, Conestoga & Baker Stoves Or Fireplace Inserts
"Before You Buy... Give Us A Try!"

J&A STOVE SALES
3753 East Newport Road, Gordonville, Pa. 17529
ROUTE 772 1/2 MILE EAST OF INTERCOURSE
717-768-8913

THEIR LOSS IS YOUR GAIN WE PURCHASED A LOAD OF CASE TRACTORS

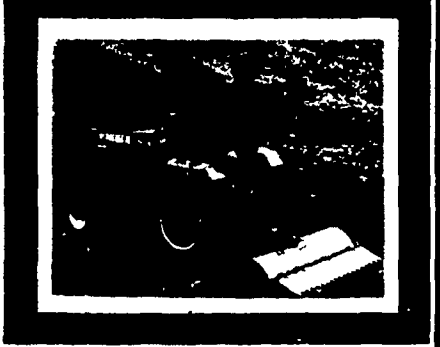
PURCHASED AT UNBELIEVABLE LOW PRICES WE'LL PASS THE SAVINGS ON TO YOU WHILE SUPPLY LASTS

TOUGH DEPENDABLE QUALITY THAT'S A CASE

Case lawn and garden tractors are rugged, reliable machines. Built for all kinds of work around your place. Spring tilling in the garden, mowing a neat, smooth lawn, sweeping leaves or blowing snow. And those are just a few of the tough jobs a Case can handle.



TOUGH TRACTOR
Welded frame, rugged cast iron front axle, heavy-duty king pins and rear axle housing with big beefy gears.



A tough bunch of tractors

HYDRIV
The Case hydraulic system powers the tractor and hydraulic attachments. No troublesome belts, chains, shafts or pulleys in this drive train.



RUGGED CASE BUILT ATTACHMENTS
A full line of attachments to mow, till, haul, sweep, blow snow and more. The exclusive Case Snap-Fast attachment system makes equipment changes quick and easy.

12.8% Financing



LAWN CARE OF PENNA.

1 MILE NORTH OF MARTINDALE ON GRIST MILL RD
A little out of the way... but a lot less to pay.
NEW HOURS: MON THURS FRI & SATS WED 9:30-5:30

(215) 445-4541