

# Livestock market and auction news

## Lancaster Feeder Cattle

Friday, Sept. 24

Report supplied by USDA

Today 935  
Last Friday 708  
Last Year 636

TREND: Trend not fully comparable because of small supply in recent weeks. Supply included 506 in graded sale, sold in lots of 10 or more; around 100 head in lots of four to eight, with balance in lots of three or less.

FEEDER STEERS: Medium Frame 1: Several lots 715-930 lb. 58.85-61.00; Large Frame 1: One lot 690 lb. 62.00; few lots 865-1040 lb. 53.00-54.10. Medium and Large Frame 1: Couple lots 390-585 lb. 61.75-64.00; few lots 735-965 lb. 59.35-61.25. Small to Large Frame 1: One lot 635 lb. 61.75. Medium Frame 1-2: Few lots 520-745 lb. 53.00-57.25. Large Frame 1-2: Couple lots 950-1015 lb. 52.50-54.10. Medium and Large Frame 2: Couple lots 590-735 lb. 54.00-56.75. Large Frame 2 Holsteins: One lot 765 lb. 45.50 and one lot 1026 lb. 43.50.

FEEDER HEIFERS: Large Frame 1: Couple lots 560-620 lb. 50.00-50.10. Medium and Large

Frame 1: One lot 389 lb. 49.50. Medium and Large Frame 1-2: One lot 658 lb. 44.00.

FEEDER BULLS: Medium and Large Frame 1: Several lots 370-770 lb. 45.00-48.50.

## St. Louis Cattle

Wednesday, Sept. 29

Report supplied by USDA

CATTLE: Receipts this week 3,400 week ago 4,200 year ago 3,600. Compared to the previous week, slaughter steers mostly 1.00 higher. Slaughter heifers fully 1.00-1.50, instances 2.00 higher. Cows and bulls 1.00-2.00 higher. Slaughter supply mainly Choice and Prime 2-4 1050-1150 lb. Steers, around 35% heifers and 10% cows.

SLAUGHTER STEERS: Mixed Choice and Prime 2-4 1050-1250 lbs. 59.00-60.00, Closing 59.50-60.00. Choice 2-4 950-1225 lbs. 57.50-59.50, 58.00. Closing 58.00-59.60. Mixed Good and Choice 2-4 900-1175 lbs. 56.50-58.00. Good 2-3 900-1175 lbs. 54.50-56.50. Mostly Good 2-3 1050-1250 lb. Holsteins 50.00-52.50.

SLAUGHTER HEIFERS: Mixed Choice and Prime 2-4 900-1050 lbs. 56.50-57.00. Choice 2-4 900-1100 lbs. 55.00-56.50; 800-900 lbs. 52.00-55.00. Mixed Good and Choice 2-3 800-1000

lbs. 50.00-52.00. Good 2-3 750-950 lbs. 48.00-50.00.

COWS: Closing week sales Utility and Commercial 2-4 37.00-40.00. Boning Utility 1-2 40.00-42.00. Few High-Yielding Utility 42.00-43.00. Cutter 1-2 36.00-39.00. Canner and Low Cutter 1-2 31.00-36.00.

BULLS: Yield grade 1-2 1050-1900 lbs. 46.00-52.00. Individual yield grade 1 1475 lbs. 52.75.

WEDNESDAY'S WEEKLY SHEEP AUCTION: Receipts about 400 head compared last Wednesday, Spring slaughter lambs 4.00-5.00 lower. Other classes scarce, and prices not fully tested.

SPRING SLAUGHTER LAMBS: Choice and Prime 90-130 lb. mostly woolled and including some shorn with mostly No. 1-2 pelts 43.50-49.50, mostly 45.00-48.50. Couple small lots 107-117 lbs. 50.00; lot 164 lbs. 43.50.

SLAUGHTER EWES: Few small lots Utility 10.00-11.50.

FEEDER LAMBS: Few small lots and individual head 60-85 lbs. 41.00-44.50.

FEEDERS: (including around 1,200 at the regular Thursday auction.) Feeder Steers 2.00-3.00 lower. Feeder Heifers 2.00-5.00 lower, fully decline on weights

under 1600 lbs. Supply mainly medium frame 1 and mixed 1-2 400-700 lbs. Steers and Heifers and including numerous lots 650-950 lbs. Holsteins. Attendance moderate.

FEEDER STEERS: Medium Frame 1 375-500 lbs. 63.25-68.00; 500-600 lbs. 63.00-66.00; 600-675 lbs. 61.00-62.00; lot thin 717 64.75. Medium Frame 1-2 and some small frame 1: 450-525 lbs. 57.50-60.00. Large Frame 2 Holsteins: Numerous lots 625-950 lbs. 48.00-51.75; lots 560 lbs. 53.50.

FEEDER HEIFERS: Medium Frame 1: 300-600 lbs. 50.00-55.00; 600-725 lbs. 51.00-54.75. Medium frame 1-2 and some small frame 1: 350-550 lbs. 48.00-50.25.

STOCK COWS: Lot Medium Frame 1-2 middle-aged 885 lbs. bred 36.25.

COW AND CALF PAIRS: Lot Medium Frame 1-2 young with baby calves at side 530.00 per pair.

## Peoria Cattle

Thursday, Sept. 30

Report supplied by USDA

Slaughter Steers mostly steady for the week after selling higher in active trading on Monday and then lower on Wednesday under light demand. Slaughter Heifers steady to .50 lower. Cows fully 1.00 to

mostly 2.00 higher. Not enough bulls for a test. Slaughter Steers and Heifers were higher in initial trading buoyed by small numbers caused by a combination of favorable harvest weather and a stockyards strike by the local livestock handlers union. Declining wholesale beef prices made for a much more narrow demand on Wednesday. Receipts about 1900 this week as compared to 2363 a week ago and 2116 a year ago.

SLAUGHTER STEERS: Choice 2-4 1025-1175 lbs. 57.00-58.00 late, on Monday 58.00-59.50 and few 60.00-60.50. Mixed Good and Choice 2-3 950-1100 lbs. 55.00-57.00, mostly 55.00-56.00 late. Good 52.50-55.00. Some Good 2 1150-1400 lbs. Holsteins 52.00-53.00.

SLAUGHTER HEIFERS: Choice 2-4 900-1100 lbs. 55.00-56.50 late, load 3-4 997 lbs. 57.25; Monday 56.00-57.00, few 57.50-58.00 with some 850-900 lbs. 55.00-56.00. Good 800-950 lbs. 52.00-55.00.

COWS: Utility and commercial 1-3 40.00-44.00, few 45.00. Cutter 1-2 36.00-40.50.

BULLS: YG 1-2 1100-1600 lbs. Monday 48.00-50.00.

For effective control of RATS

## DEAD-END RAT KILLER



DEAD-END IS SUPERIOR TO OTHER RAT KILLERS BECAUSE:

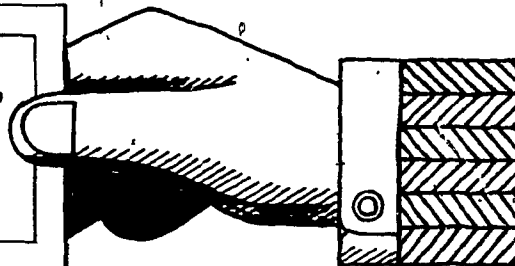
- \* Rats savor and eat DEAD-END before their favorite foods and other rodenticides.
- \* The oils in DEAD-END promote fast killing action.
- \* DEAD-END will not mold or become infested with insects and is formulated to disguise human scent and prevent bait shyness.
- \* DEAD-END exceeds E.P.A. standards for bait acceptance by 10%.
- \* Guaranteed or your money back.

DEAD-END IS ONE OF THE MOST EFFECTIVE RODENTICIDES YOU CAN BUY.

CONTACT: D&R SALES & MFG.,  
Div. of BOMA ENTERPRISES, INC.

Williamsport, PA 17701  
Phone: (717) 326-2061

Be Our Guest!

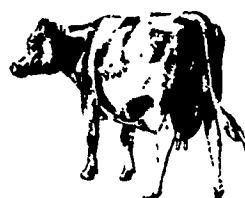


## CHESTER COUNTY HARVESTORE PANCAKE & SAUSAGE BREAKFAST & BUILDING BEE!



Serving...

- \* HIGH MOISTURE CORN PANCAKES
- \* SAUSAGE FROM HOGS FED HIGH MOISTURE CORN
- \* MILK FROM COWS FED HIGH MOISTURE CORN



DATE: Tuesday, October 5, 1982

LOCATION: From Atglen take

Route 41 south to Octorara School (Highland Road); turn right, go to first crossroad; turn right; first farm on left.

PLACE: Swampy Hollow Farm  
John M. Umbie & Sons  
Atglen, PA

TIME: Serving Breakfast -  
8:00 a.m. to 11:00 a.m.

WATCH THE UMBLES' NEW 2033 HARVESTORE STRUCTURE FOR HIGH MOISTURE SHELLLED CORN BEING BUILT!

TALK TO DAIRYMEN WHO ARE FEEDING HIGH MOISTURE GROUND EAR CORN AND HIGH MOISTURE SHELLLED CORN!

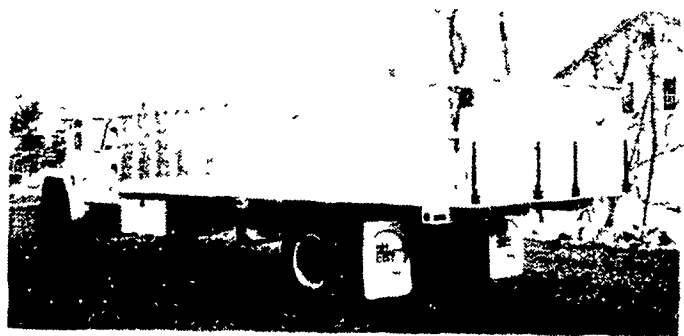
FEATURING:

- \* HIGH MOISTURE SHELLLED CORN WITH & WITHOUT OATS
- \* HIGH MOISTURE GROUND EAR CORN
- \* POWER SWEEP AUGER UNLOADER
- \* SWEEP ARM AUGER UNLOADER
- \* HARVESTORE WA-RO-MATIC ROLLER MILL

CALL ANY LOCAL CHESTER COUNTY HARVESTORE OWNER FOR TICKETS AND RESERVATIONS, OR ARLEN KEENER, 717-285-7426, OR PENN-JERSEY HARVESTORE, 717-354-4051.



Manufacturer of ALL ALUMINUM TRUCK BODIES Livestock, Grain and Bulk Feed



Aluminum Grain Body

Distributor of **TIMPE** Refrigerated Trailers  
Sales & Service  
Blue Ball, Pa. 717-354-4971