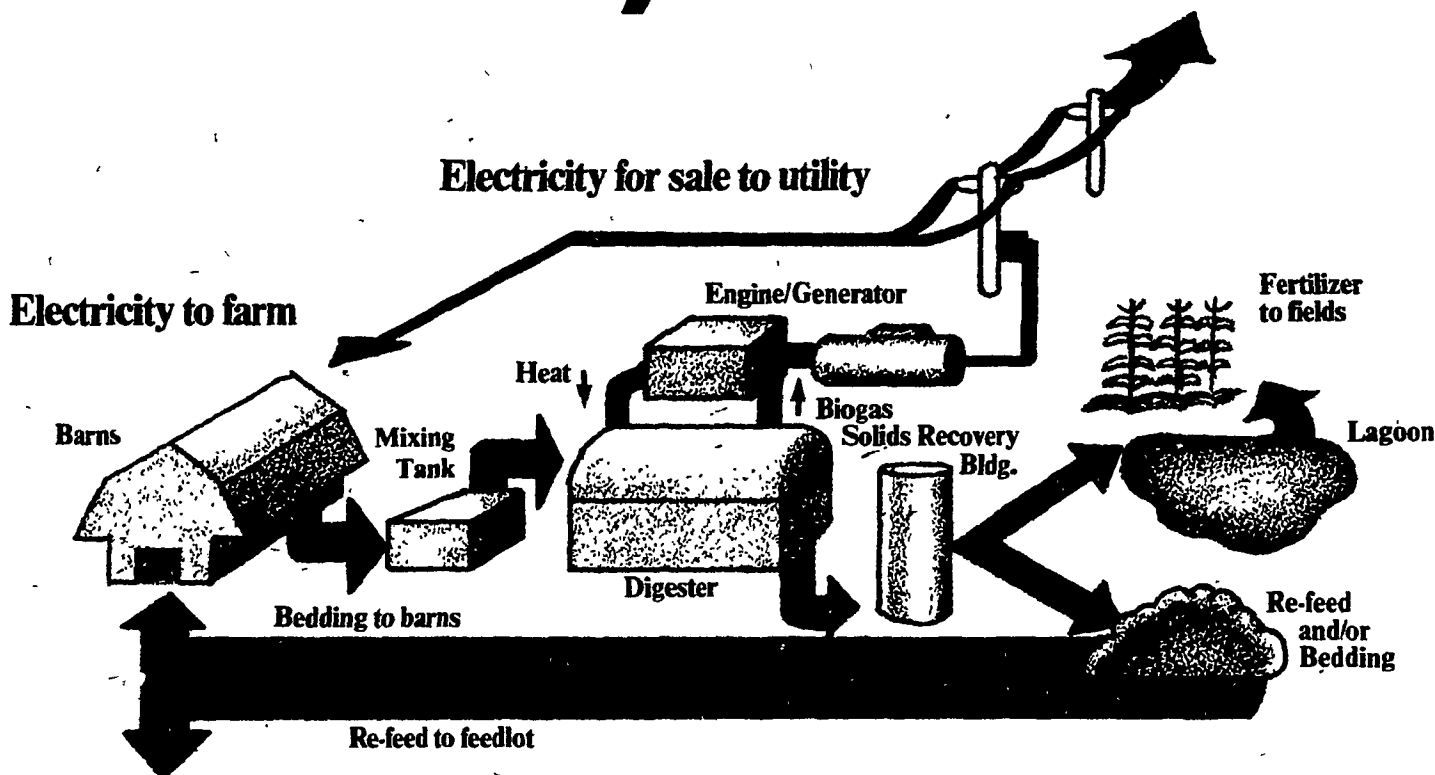




Anaerobic Digestion System



EN-CYC Suite 952 NBC Center, Lincoln, NE 68508

Informative Seminar

Speaker will be Mr. Rex Meyer

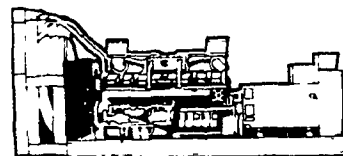
...on converting waste into energy by means of an anaerobic digestion system. Take advantage of this unique opportunity to learn about the potential value of waste material on your farm.

This seminar will be held at the Martindale Fire Hall, in Martindale, Pennsylvania. The same seminar will be given twice, for your convenience on September 30th, 1982. The first session will begin at 1:30 P.M., and the second at 7:30 P.M.

**EVERYONE WELCOME!!
FOR MORE INFORMATION,
CONTACT YOUR LOCAL EN-CYC REPRESENTATIVE**



MARTIN MACHINERY



**INDUSTRIAL • COMMERCIAL • AGRICULTURAL • RESIDENTIAL • COMPLETE STANDBY SYSTEMS
SPECIALIZING IN ENGINE GENERATOR SETS
P.O. BOX 35, LANCASTER AVENUE, MARTINDALE, PENNSYLVANIA 17549
TELEPHONE: (215) 445-4585 TELEX 522372 IP-A-HOWD Attn. M.M.**

DIRECTIONS:

From PA Turnpike, get off at the Denver Exit (Exit 21). Take Route 222 South approximately 5 miles to the Ephrata Exit (Route 322). Take Route 322 East approximately 1½ miles to the traffic light in Hinkletown. Turn left (onto Lancaster Ave.) and continue for about 3½ miles until the square in Martindale. Turn left at square and Fire Hall is about 200 feet on the left.

