

Pa. grain, tobacco crop down

HARRISBURG — Pennsylvania's 1982 production of corn for grain, oats, and tobacco is expected to be below last year based on Sept. 1 conditions, according to the Pennsylvania Crop Reporting Service. Corn for grain production is forecast at 126.04 million bushels, six percent below a year ago. Acreage for harvest is set for 1.37 million acres with a yield of 92.0 bushels per acre. Pennsylvania oats production is

forecast at 19.77 million bushels, one percent below last year. Acreage for harvest is set for 335,000 acres with a record yield of 59 bushels per acre. The state's tobacco production is forecast at 24.7 million pounds, nine percent below last year. Acreage for harvest is expected to be 13,000 acres with an average yield of 1,900 pounds per acre. Grape production is estimated at 55,000 tons, 10 percent below the

61,000 tons harvested in 1981. At the U.S. level, corn production is forecast at a record high 8.32 billion bushels, one percent above 1981 production. Acreage for harvest is set for 73.02 million with an average yield of 113.9 bushels per acre. Oats production is forecast at

599.0 million bushels, 18 percent above last year. Acreage for harvest is expected to be 10.38 million with an average yield of 57.7 bushels per acre. All tobacco production is forecast at 1.92 billion pounds,

seven percent below last year. Indicated acres for harvest are 903,100 with an average yield per acre of 2,131 pounds. Grape production at 5.58 million tons is 25 percent above the 4.46 million tons produced last year.

Simmental Assn. names trait leaders

BOZEMAN, Mt. — The American Simmental Association has announced 86 purebred Simmental bulls have been designated as 1983 Genetic Trait Leaders, an increase of eleven from last year's total of 75. Eighteen sires qualified as a trait leader in more than one category.

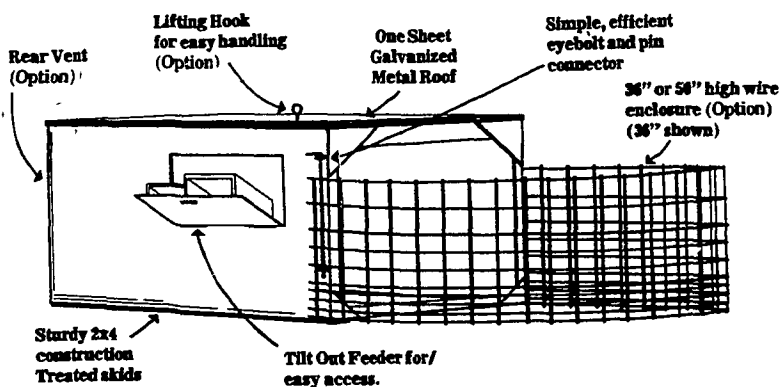
"Recognition of the 86 Simmental trait leaders was a result of the evaluation of 518,069 progeny performance records representing 54,043 management units," said American Simmental Association Executive Vice President Earl B. Peterson. In all, a total of 1,610 bulls were considered.

All Simmental bulls that meet qualifying progeny standards are automatically included in the ASA Sire Summary, and are eligible for consideration as genetic trait leaders. Bulls may be named in more than one trait, provided their progeny rank in the top two percent for each trait. Traits, for which leaders are listed include: calving ease; weaning weight; yearling weight; carcass value; daughters' first calf calving ease; and daughters' first calf weaning weight.

Signal, whose picture will appear on the back cover of the 1983 Summary, is the only bull to qualify as a trait leader in four categories. Bold, C&B Western, Extra, and Siegfried earned the honor in three traits. Thirteen bulls were issued Genetic Trait Leader awards in two traits, and twenty sires made their first appearance on the Genetic Honor Roll.

Data on all 1,610 bulls is contained in the 1983 National Simmental Sire Summary, which will be released later this fall. The Sire Summary is mailed free of charge to all members. Non-members may obtain copies by mailing a check in the amount of \$5 for each copy requested to the American Simmental Association, One Simmental Way, Bozeman, MT 59715.

Compare the Stoltzfus Woodwork Calf Hutch



ALSO AVAILABLE: TRACK FOR FASTENING CALVES' CHAIN TO CEILING OF HUTCH
Dealers: (Calf Hutches Only)

Maryland:
LEROY HILDEBRAN
Woodsboro, Md.
301-845-8929

Lebanon County:
UMBERGER'S MILL
Rt. 322, RD#4 Lebanon, Pa.
717-867-5161

Berks County:
JOE RUTH
RD #4133 Fleetwood, Pa. 19522
215-944-7571

Chester County:
ZOOK'S FARM STORE
Honey Brook, Pa.
215-273-2943

MFD. BY: STOLTZFUS WOODWORK
RD 2, Box 2280, Gap, PA 17527
717-442-8972

IMPROVE FEED PALATABILITY AND PROFITABILITY BY USING LIQUID AND DRY MOLASSES PRODUCTS IN YOUR FEED FORMULATION FOR ANIMALS FROM ZOOK MOLASSES CO.



- Liquid Feeding Cane Molasses
- Honey Brook Brand Dried Molasses - 50 lb. Bag
- Z Brand Dried Molasses - 50 lb. Bag
- Honey Brook Energiblock - All Natural 20 - No. Urea
- Energiblock - Hi Protein 36
- Energi Cubes for Horses

GOOD FOOD INC.

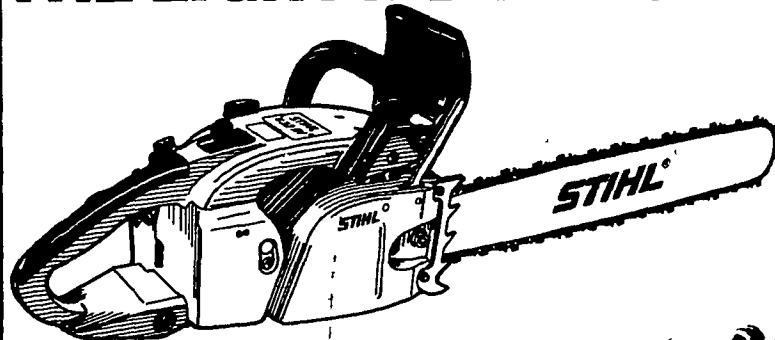
GOLDEN BARREL Household Molasses and Syrup

- | | | |
|-------------------------|---------------------|-----------------------|
| ★ BAKING MOLASSES | ★ BARBADOS MOLASSES | ★ BLACKSTRAP MOLASSES |
| ★ PANCAKE SYRUP | ★ HONEY | ★ TABLE SYRUP |
| ★ CORN SYRUP | ★ SORGHUM SYRUP | ★ SHOO-FLY PIE MIX |
| ★ WORCHESTERSHIRE SAUCE | | |

MOLASSES FOR THE ANIMAL or THE KITCHEN

Contact:
ZOOK MOLASSES CO.
WEST MAIN ST., BOX 160, HONEY BROOK, PA. 19344
Phone 215-273-3776 or 717-393-3987
Call toll free in area code 215 & 717: 800-662-7464

THE LIGHTWEIGHT SAW



DESIGNED FOR THE HEAVYWEIGHTS

The Stihl® 032AV was designed for professionals, farmers, foresters, contractors and anyone who needs a heavy-duty, lightweight chain saw. So, if your woodcutting needs are more than average, you need more than the average chain saw. Come try the Stihl 032AV.

STOLTZFUS WOODWORK
RD Gap, PA Box 183
1 Mile North Rt. 897 From Gap

MARTIN HARDWARE & EQUIPMENT CO.
Rt. 501 1 1/2 Miles South of Schaefferstown, PA
Phone 717-949-6817

A & B SALES & SERVICE
2 Miles South of Rt. 23 Along 772
Thur Monterey - RD 1 Ronks, PA

WES STAUFFER SALES & SERVICE
RD 3 Ephrata, PA Phone (717) 738-4215 Ephrata Exit New Rt. 222
1/4 Mile West on Rt. 322, Turn left onto Pleasant Valley Rd.

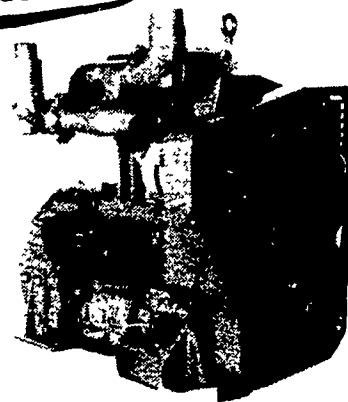
STIHL®
THE WORLD'S LARGEST SELLING CHAIN SAW

GOT A MATCH?

SURE! MY KIRLOSKAR DIESEL ENGINE AND YOUR MILK COOLING SYSTEM... A PERFECT MATCH!

Kirloskar

- ✓ DEPENDABLE
- ✓ FUEL EFFICIENT
- ✓ HEAVY DUTY
- ✓ LOW COST



Includes:
Delco Starter, Motorola Alternator, Fram Fuel & Oil Filters, Oil Bath Air Cleaner, and Industrial Muffler.
Air-Cooled & Liquid-Cooled Diesels Available
Up To 100 HP

10% OFF LIST TIL NOV. 30th

SALES AND 24 HOUR SERVICE IN LANCASTER AREA by

WARREN M. HALLIGAN

RD 1, Rt. 340 Kinzers, PA 17534
3 1/2 miles East of Intercourse on Rt. 340
(717) 768-8446

Corporate office KIRLOSKAR, INC. (301) 247-2110
76-78 Alco Pl., Baltimore, MD 21227