

## Farmers report six days suitable for fieldwork

**HARRISBURG** — Pennsylvania's three regions reported six days suitable for fieldwork for the week ending Sept. 19, according to the Pennsylvania Crop Reporting Service.

Field activities for the week included harvesting apples, grapes, peaches, potatoes, tomatoes, tobacco and corn silage; plowing; planting wheat and barley; and making hay.

Topsoil moisture in Pennsylvania was rated short by 82 percent of farm reporters and adequate by 18 percent.

By the end of the week, 56 percent of the corn was dented and 17

percent was mature compared with last year's average of 55 percent dented and 32 percent mature. The five-year average is 57 percent dented and 21 percent mature. Corn silage was 42 percent harvested compared with 31 percent harvested at this time last year.

Statewide, 56 percent of the potatoes were harvested compared with 51 percent last year. In the northern region 51 percent was harvested, in the central region 54 percent was harvested, and in the southern region 83 percent of the potato crop was harvested.

The Commonwealth's tobacco crop was 78 percent harvested compared with 88 percent harvested at this time last year.

By the end of the week 46 percent of the barley crop was planted compared with 31 percent last year. In the north 56 percent was planted, in the central region 33 percent was planted, and in the south 35 percent was planted.

Wheat was 30 percent planted compared with 22 percent at this time last year. In the north 36 percent was planted, in the central region 22 percent was planted, and in the south 26 percent of the wheat

crop was planted.

Statewide, fall plowing was 71 percent complete compared with last year's average of 55 percent complete. The five-year average is 60 percent.

Third crop alfalfa was 73 percent harvested compared with 78 percent last year. In the north 65 percent was harvested, 70 percent in the central region, and 89 percent of the third crop was harvested in the south. Fourth crop alfalfa was 33 percent harvested compared with 28 percent harvested last year. In the north 29 percent was harvested, in the

central region 39 percent, and in the south 35 percent was harvested.

By the end of week harvest of second clover-timothy was virtually complete, about a week ahead of last year.

The quality of hay made during the week was rated good by 54 percent of farm reporters, fair by 39 percent and poor by seven percent. The amount of feed obtained from pastures was rated below average by 62 percent of our reporters, average by 34 percent and above average by four percent.



**THINK AHEAD...**  
Read Futures Markets on Page 3.

**CUSTOM BUILT CARTS**  
(with fiberglass)

**FIBERGLASS HAND LAYUP EQUALS 1/4 MORE STRENGTH**  
NO RUSTING — AIR TIRES



14 BUSHEL FEED CART



30 BUSHEL SILAGE CART



WHEELBARROW TUB  
2 Sizes — M11 — K 8



WATER TROUGH  
125 Gal. Capacity

**OUR PRICES ARE REASONABLE -**  
**SOUDERSBURG MANUFACTURING CO.**  
116 No. Soudersburg Road  
Gordonville, PA 17529  
717-394-9221

Authorized Dealer: **LANCASTER SILO CO.**  
2008 Horseshoe Rd.  
Lancaster, Pa. 17601  
717-299-3721

**DEALER INQUIRIES INVITED**

**FISHER'S PAINTING**

- SAND BLASTING ■ ROOF COATING
- SPRAY & BRUSH PAINTING
- REPOINTING ■ WATERPROOFING
- SIGN PAINTING



Specializing In Farm Buildings  
Aerial Ladder Equipment

— New Location —  
54A Old Leacock Rd.  
Ronks, PA 17572  
717-768-3239

between 6 A.M. & 9:30 A.M. or 5 P.M. & 6 P.M.  
Exterior Paint, Roof Coatings, and  
Accessories Sold Here.

## GOOD GRAIN STORAGE — a matter of getting the most for your money

Before you put down any hard-earned money for any grain bin, why not be sure you're getting the best storage available for your valuable grain? With BROCK you are.

BROCK bin quality and convenience features can mean more money in your pocket when you invest in a BROCK.

### QUALITY

with durable galvanized-steel construction; all parts punched and formed with precision for perfect weatherproof fit; 35° pitch roof, and high-rise ribs for maximum strength.

### SAFETY

with a sturdy, tubular handrail and roof ladder; walk ring around fill hole; strong, wide, comfortable ladders; and unique roof stiffener ring that gives added protection and strength.

### CONVENIENCE

including BROCK's exclusive "no-tools-needed" Cam-Lock Door; large fill hole, "spun" fill hole lid, and collar seal that effectively shuts out all rain and snow.

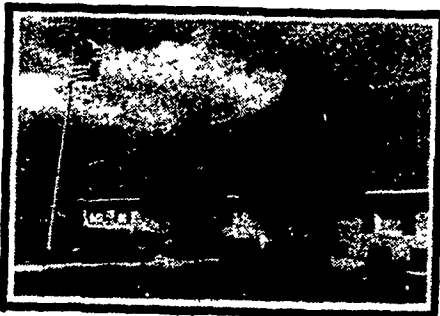
### ACCESSORIES

like the revolutionary WELL-GARD™ Discharge Guard; specially-designed ladder and safety cage; and BROCK's SHUR-STEP™ Bin Stairs.



## BROCK - FIRST

...in the features that mean the most for your money



**H**  
HERSHEY EQUIPMENT  
COMPANY, INC.

SYCAMORE IND. PARK  
255 PLANE TREE DRIVE, LANCASTER, PA. 17603  
(717) 393-5807  
Route 30 West at the Centerville Exit

Designers of Quality Systems For Poultry, Swine & Grain Handling