

## Public Sales Register

Closing Date - Monday, 5:00 P.M.  
of each week's publication

**THURS OCT. 7 - 11 A.M.**  
Public Sale of Cattle  
Located at Guernsey's  
Sales Pavilion, along Rt.  
30, 7 mi. east of Lan-  
caster PA State Grange  
and J Everett Kreider,  
Auctioneers

**THURS OCT. 7 - 7:30 P.M.**  
Public Sale of Cattle.  
Located at Shenandoah  
Valley Livestock Sales,  
Inc., 1044 Edom Rd., Har-  
risonburg, VA

**THURS OCT. 7 - PA State**  
Grange Reg. and Grade  
Holstein Above Herd  
Average Dairy Sale at the  
Guernsey Sales Pavilion,  
6 mi. east of Lancaster  
along Rt. 30 State  
Grange and J. Everett  
Kreider, sale managers  
and auctioneer.

**FRI OCT. 8 - 5:30 P.M.**  
Gap Auction Antiques  
and Household Goods  
sold at every auction.  
Located at Rt. 41, Lan-  
caster Turkey Hill Minit  
Market, cross RR bridge,  
Ira Stoltz & Son, Auc-  
tioneers

**FRI OCT. 8 - 11 A.M.**  
Public Sale of Cattle.  
Located about 1 mi. west  
of Rt 8 at 4 corners of  
Centerville, PA 12 mi.  
north of Titusville, 40 mi.  
south of Erie, 25 mi nor-

theast of Meadville, PA.  
James K. Anderson Fam-  
ily, Owners. Backus  
Associates, Inc

**FRI OCT. 8 - 6 P.M.** Public  
Sale of Guns Located at  
440 Ramsey Ave.,  
Chambersburg, Franklin  
Co., PA. McLaughlin Auc-  
tion House. J Robert  
Meyers, Auctioneer

**TUES OCT 5-8 P.M.**  
Dairy Cows Sale at  
Smoketown Quality Dairy  
Sales Co., Route 340,  
Smoketown, Pa. Sale  
Managed by Smoketown  
Quality Dairy Sales, Carl  
Diller and Paul Snyder,  
Auctioneers

**SAT OCT 9 - 9 A.M.**  
Reistville Builders Inven-  
tory Reduction and Con-  
signment Sale. Located 1/2  
mi west of Reistville, R.D.  
2, Myerstown, PA.  
Answering Service  
717-949-3147

**SAT OCT. 9 - 9 A.M.**  
Public Sale of Sawmill  
Equipment. Located next  
to Grose's Camping  
Grounds, 5 mi. west of  
Middleburg, 1/8 mi west  
of National Limestone  
Quarry or 1 1/2 mi east of  
Beavertown, PA. Mrs  
Phillip Grose, Owner Earl  
Eash, Auctioneer

**SAT. OCT. 9 - 10 A.M.**  
Public Sale of Antiques,

Furniture and Household  
Goods. Located at  
Lampeter Community  
Pavilion, Lampeter, PA,  
Lanc. Co. J. Harold For-  
wood, Owner. Elvin  
Siegrist and Alvin Miller,  
Auctioneers.

**SAT. OCT. 9 - 9:30 A.M.**  
Public Sale of Shop Equip-  
ment, Printing Presses,  
Electric Motors, Kilns and  
Etc Located at 722 W.  
Market St, York, PA York  
City School Dist. Blaine N.  
Rentzel, Auctioneer

**SAT OCT. 9 - 10 A.M.**  
Public Sale of Farm Equip-  
ment, Tools, Cows and  
Household Items. Located  
4 mi. east of Lingletown  
Sq to North Fairville Ave.  
or take Manada Hill Exit  
27, go west on 39, 1/2 mi  
to N Fairville Ave., 2 mi.  
to sale. Sam and Tom  
Bowers, Owners Richard  
P McNeal, Auctioneer

**SAT. OCT 9 - 10 A.M.**  
Public Sale of Farm  
Machinery, Household  
Goods, Hay, Tools and  
Misc Items Located 3 mi.  
north of Forest Hill, via  
Rocks Rd., Rt 24 turn on  
Sharon Rd. and proceed  
to sale in the 3 District of  
Harford Co, MD Mr and  
Mrs Gladys Brinegar,  
Owners. David W and  
Charles W Shrodes, Auc-  
tioneers

**MON. OCT 11 - Hubert**  
Charolais Ranch Produc-  
tion Sale. Located at the  
ranch, Monument, Kan-  
sas Sale managed by  
Buzz Garey, 100 Walnut  
Lane, Morrisville, PA

19067

**MON. OCT. 11 - 9:30 A.M.**  
Consignment Sale.  
Located at S. Race St,  
Myerstown, Pa. 17067.  
Sale held by Wengers  
Farm Machinery, Inc

**MON. OCT. 11 - 11 A.M.**  
Public Sale of Farm  
Machinery. Located at Rt  
213, Galena, MD. Harry  
Rudnick and Sons, Auc-  
tioneers.

**MON. OCT. 11 - 12 Noon.**  
Public Sale of Farm Equip-  
ment. Located taking Rt.  
272 north from Ephrata  
to Rt. 897, take Rt 897  
north to Reinholds, alter

crossing the railroad  
tracks in Reinholds take  
2nd road left Swamp  
Bridge Road to 2nd farm  
on right Feed Mill Farm  
#4, West Coccalico Twp.,  
Lanc Co., PA. Dutchland  
Laboratories, Inc.,  
Owners. John E. and Paul  
E. Martin, Auctioneers

**TUES WED. THURS.**  
OCT 12, 13 and 14 - 9:30  
A.M. Public Sale and  
Plumbing and Spouting  
Supplies. Located in the  
village of Intercourse  
along Rt. 340 Noah M.  
Martin Co., Owner.  
Robert E. and Jerry R  
Martin and Frank L

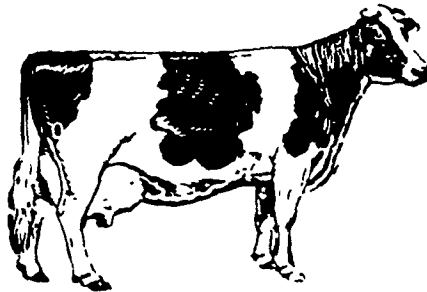
Steller, Auctioneers  
**TUES. OCT. 12 - 7 P.M.**  
Feeder Sale. Located at  
Carlisle Livestock Market,  
just off I-81, exit 12.

**TUES. OCT. 12 - 5:30 P.M.**  
Farmersville, Auction in  
Farmersville, 3 mi. East of  
Brownstown, Lancaster  
County, Pa. John J. Rutt,  
Auctioneer

**THURS. OCT. 14 - 11 A.M.**  
Public Sale of Tractors,  
Farm Equipment, Tools,  
Antiques, Household  
Goods, Toys and Coins.  
Located along Miller Rd.,  
R.D. 1, Washington Boro,  
Manor Twp., Lanc. Co.,

PA, take #999 west of  
Millersville to Central  
Manor Store, then turn  
left to Central Manor Rd.  
to Miller Rd and turn  
right. Mr. and Mrs. Aaron  
H. Souders, Owners.  
Howard Shaub and Roy  
Probst, Auctioneers.

**FRI. OCT. 15 - 6:30 P.M.**  
Consignment Sale of Cat-  
tle and Feeder Pigs  
Keister's Middleburg Auc-  
tion Sales, Inc. Rt. 522, 3  
miles East of Middleburg,  
5 miles West of Selin-  
grove, Pa. Don & Walt  
Keister, Owners, Ray  
Long & Dave Imes Auc-  
tioneers.



## NEW HOLLAND SALES STABLES ANNUAL FALL HEIFER SPECIAL

**SATURDAY, OCTOBER 9  
10 A.M.**

Located 12 miles east of Lancaster off Rt. 23.

All size heifers, Registered and Grade. Registered heifers will sell at 12 Noon. Several lots of good breeding age open heifers. Many lots of springing heifers due to calve for base milk. Several Registered heifers, good pedigree, all ages. Several stock bulls, some Registered. Many heifers will be calftood vaccinated. All heifers tested for out of state shipment. As always, we will have buyers from many different states.

Note to consignors: Please have heifers at sales barn with registration papers, health charts, breeding information, vet checks, etc. day before sale Friday, October 8.

Trucks and motels available.

For more information, contact Norman Kolb 717-397-5538 or Abe Diffenbach, Sales Barn office 717-354-4341.

## "Best of Both" CLUB CALF SALE

1:00 p.m.

**SATURDAY, OCTOBER 23**

SALE TO BE HELD AT:  
**FARMER'S LIVESTOCK EXCHANGE**

Winchester, Virginia  
(Intersection of Rt. 37 and Rt. 50)

Selling 50 Home-raised calves.

**95% Chianina-  
crosses  
5% Angus**

**All Calves  
Weaned  
Vaccinated  
Wormed, Halter  
Broken, and  
on Feed.**

**THANKS**

To All Our Previous Customers

WRITE OR CALL FOR DETAILS:

**P.T. McIntire & Sons**

Box 164  
White Post, Va. 22663  
703/837-1254  
703/837-1144

**Whitewood**

Gordon Schubert, Mgr.  
P.O. Box 225  
The Plains, VA 22171  
703/364-1852

## LONG-RAY REG. HOLSTEIN MILKING HERD SALE

PORT ROYAL, PA.

**WEDNESDAY EVE., SEPTEMBER 29**

7:30 P.M.

Located 6 miles south of Port Royal on Mountain Road. Watch for sale signs on Rt. 75, fives miles south of Port Royal.

**33 REG. HOLSTEINS 33**

Production - 6 sell with 20,000 to 24,217 lbs. of milk. 4 sell with 18,000 to 20,000 lbs. 2 cows sell with 894 & 853 fat. 8 sell 700-800 fat. 14 are 1st calf heifers.

Sires represented - Elevation 2. Jet Stream 4. Larry 2. Vigo Raverion 3. DQA Elevation Pete 5. Eng-amer Ivanhoe Jerry. Long Haven Monitor Julius 2 and others.

Service sires - Chairman, Jet Stream, Trump, Legacy, Jerry, Jemini & other sire power bulls.

The Longs are reducing the size of their milking herd. Glen Simonton & Donald Adams selected 33 cows from a herd of 60 and we had our choice.

**DONALD ADAMS**

CERTIFIED & ACCREDITED, PREG. EX., VAC. & INTERSTATE TESTED  
CATALOGS - TENT - LUNCH

Owners,

**LONG-RAY FARMS**

**RAYMOND T. & GLADYS I. LONG**

RD1, Port Royal, Pa. 17082

PH. 717-527-4458

LARRY LONG, Auct., Lythers, Clerk, Donald Adams, Ped.

RD 2, Port Royal, PA. 17082

717-527-4608

CONTACT DONALD ADAMS FOR CATALOG