

FARM EQUIPMENT

FARM EQUIPMENT

FARM EQUIPMENT

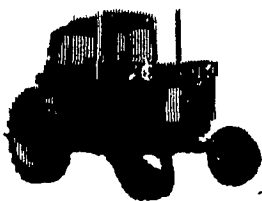
FARM EQUIPMENT

FARM EQUIPMENT

New Idea Equipment

Used 1972, 703 Uni 710 Combine, 711 Grain Hd; Scour Cleaner, Straw Spreader, Pick up Reel, Cab-Excellent, 350 Hrs., Low Acres
 Used 1976, 733 Corn Hd., 2-Row Wide, Low Acres - Excellent
 New 767 Harvester
 New 768 3R W-N Corn Hd.

HINES EQUIPMENT
 Rt. 22 West
 P.O. Box 5
 Cresson, PA 16630
 814-886-4183



NEW TRACTORS

3288
 584 R/C
 384

USED TRACTORS

Farmall 504 w/3pt.
 Farmall 656D
 IH 454D

NEW EQUIPMENT

Morrige grain dryers in stock
 720 automatic 5x18 btm. plow
 510 5x18
 420 3x16
 475 11 ft. 6"
 350 10 ft. 3"
 1190 7' mower cond.
 445 baler w/thrower
 35 rake w/dolly wheels

USED EQUIPMENT

510 plow 5 bottom, 16", \$1500



LAMB'S FARM MACHINERY
 Thorndale, PA
 Phone 215-269-2676

USED EQUIPMENT

TRACTORS:

IH 350 High Utility
 IH 574 D Row crop
 IH 1566 D., Cab & Air, 30.5x32 tires, new TA, Real Nice
 JD 4520, 20.8x38 Radials, No Cab
 606 Diesel Utility, 3 pt.
 IH 560 Gas, 400 Gas
 IH 350 Farmall, PS-
 IH 460D, Utility
 IH 544 Gas w/2000 Loader
 (2) Farmall M
 MF TO-20 w/Turf Tires
 MF 235 Gas w/Turf Tires
 Leyland 154 Gas w/Turf Tires
 Oliver 1800 Gas, Wide Front End, over & under \$4500

TILLAGE:

IH 470 Disc Harrow, 15' Folding
 IH 760 14' Offset Disc
 Bush Hog 18' Folding Disc
 Pittsburg 12' Disc
 IH 370, 350, 37, 35 In Various Sizes
 Cub 2-Way Plow
 Oliver 4-Bot. Semi-Mtd. Plow
 IH 531 3 pt. 3 Bot. Plow
 IH 550 5-Bot. 16" Semi Mtd. Plow
 MF 3 pt. Mtd., 3 Bot. Auto Reset Plow
 Dunham 8 Shank 3 pt. Chisel

PLANTERS:

(2) IH 56 4-Row Planters
 4 & 6 Row Cyclos, Field Ready!
 JD FBB 17x7 Comb. Single Disc, Good Shape!
 JD 3 pt. 4-Row Wide Cultivator
 JD FBB 17x7 DD
 IH No. 10 13x7 Plain Drill
 IH No. 10 16x7 Single Disc, Comb., Hyd. Lift
 IH No. 10 16x7 Single Disc, Comb.
 Oliver 24x6 Combination Drill
 MF 13x7 Comb. Drill
 Ontario 16x7DD Plain, Late Model
 IH 18x7 DD, Plain Drill

MATERIALS HANDLING:

Century 300 Gal. Sprayer
 Hansen 300 Gal. Sprayer, 42 Ft. Booms
 157 Hawk Bilt Spreader - \$995
 Int. 540 w/End Gate - Was \$1995 Now \$1495

COMBINES:

915 Combine, Low Hours, Like New
 844 Cornhead, Like New
 810 13' Cutter Bar
 • 11.9% Financing Available

IH 315 (For Parts)
 IH 503 Gas Hydro w/13' Head
 IH 403 w. 4-Row Wide Head & 12 ft. Grain Platform
 IH 315, 2-Row Wide Head
 IH 205 w/227 Head
 IH 203 w/2 Row Head
 IH 227 Cornhead, fits 315, 205 or 203
 MF 510 Diesel w/13' Head
 KS Gleaner, 10' Platform, 2 Row Corn head, like new
 F Gleaner, Diesel, 4 Row Wide, 12' Platform
 Straw Chopper for Gleaner M

HAY & FORAGE EQUIPMENT:

IH 990 Mower Conditioner, 9', Steel Rolls, Very Nice Cond.
 LAMCO Forage Wagon
 #5 Flail Chopper, Real Nice!
 #8 Flail Chopper, Like New
 33 NH Flail Chopper
 JD 115 Forage Wagon Model BN98 Badger Blower
 Gehl FBB 88 Blower
 Gehl FBB 99 Blower
 38 JD Chopper
 550 IH Chopper
 1014 Hesston Mower Cond.
 420T Hesston S.P.
 NH 461 Haybine, Like New
 NH 479 Haybine
 NH 489 Haybine, 2 yrs. old.
 NH 280 Baler with Thrower - Like New!
 JD 894 Rake
 IH 430 Baler w/Thrower

TRUCKS:

IH 4x4 - "As Is" - Good Farm Truck - \$800

ERB & HENRY EQUIP., INC.
 New Berlinville, PA 19545
 Ph: (215) 367-2169
 Daily 7 to 5
 Sat 7 to 3

USED TRACTORS

JD 2630
 JD 3010 Gas
 JD 4010 Diesel
 JD 4030 Diesel
 JD 4040 Diesel
 JD 4240 w/Cab & Power Shift
 JD 4430 Diesel
 Allis Chalmers G w/cult.
 MM335 w/Loader

USED TRACTORS WAIVERED TO MAR. 1, 1983

USED EQUIPMENT

Hesston PT-10 & PT-7 Fox Super D 2-Row Wide Mower Conditioners Forage Harvester
 Tye No-Till Drill, 10 Ft., JD 2500 5-Bottom 18" Like New Plow
 NI 324 2-Row Cornpicker NI 322 2-Row Cornpicker
 JD 4420 Combine w/13' Flexhead & 4 Row Cornhead

Special Price! **NEW JD 90 SKID LOADER \$6,900**



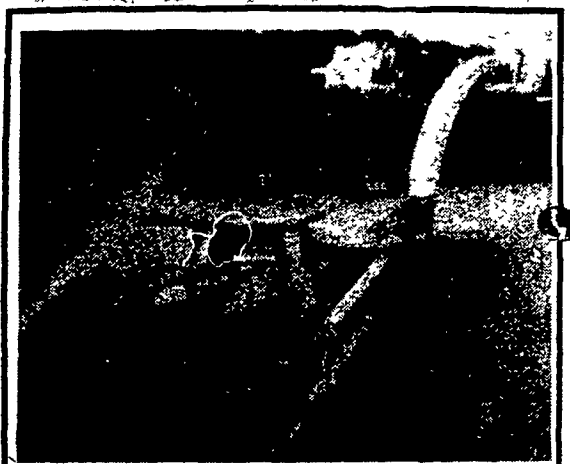
SHOTZBERGER'S EQUIPMENT
 Elm, Pa.
 Phone: 717-665-2141

ATTENTION FARMERS...

BADGER LIQUID MANURE EQUIPMENT BELOW DEALER COST

BN184 Souper-Trail "Pump Agitator" (New) \$3,400
 BN330 3000 Gal. Spreader Tank (New) \$7,500
 BN950 14 ft. Forage Box w/Roof, 8 1/2 Ton Gear & 10:00x15 8 ply (New) \$5,477

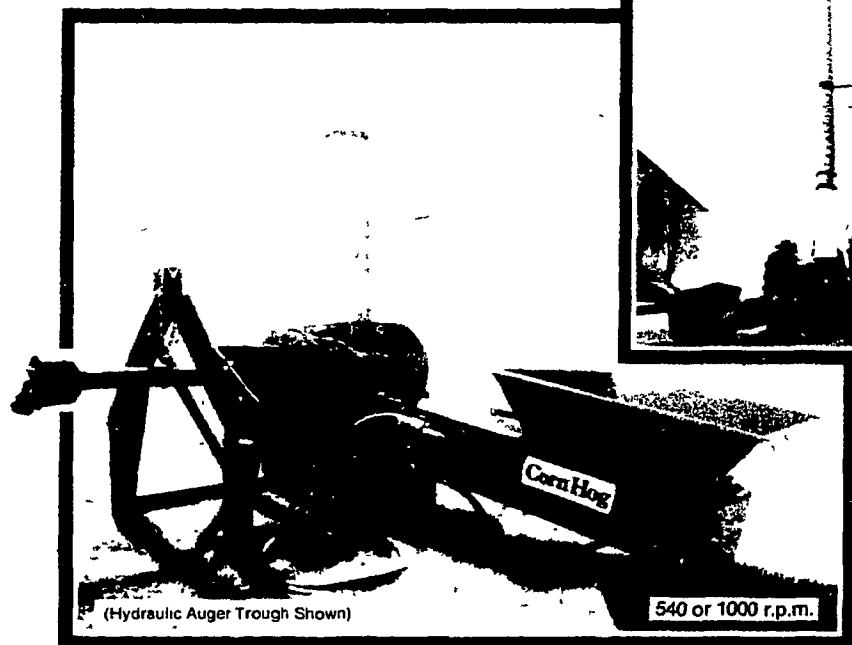
R & M FARM EQUIPMENT
 RD 2 Box 7A
 Marathon, N.Y. 13803
 607-849-3916



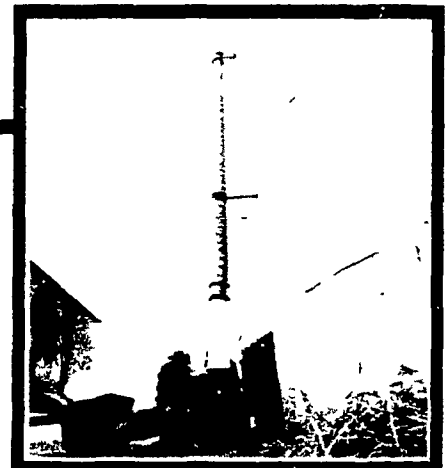
FOR SALE FORD 672 HARVESTER
 Same as International 830 3 row head, electric knife grinder. Electric controls, high float tires, 12 knife cutterhead, New, never in the field.
\$7,250.00
 Call 717-859-2712

Corn Hog®

The economical alternative to costly drying and storage systems



(Hydraulic Auger Trough Shown)



Low capital investment — use existing concrete silos

Grind more for less

Handling high moisture corn efficiently is a specialty with the Corn Hog® system. Combining a high capacity grinder with a powerful thrower, the Corn Hog grinds and stores up to 20 tons of high moisture shelled corn (14 tons of ear corn) every hour.

Continuous, non-stop silo filling with capacity and throwing power to keep pace with the biggest combines and pickers.

Corn is fed from the optional hopper or trough feeding attachment into the grinder and is shattered by 30 knives fixed to 3 grinder discs rotating at 2500 r.p.m. An adjustable feed control plate and 4 reversible grinder bars let you control the fineness of the grind you need. As ground corn passes from the grinding chamber, a 6 paddle thrower hurls it up to 80 ft. into your silo.

Don't dry it — Store it

Sitting in line at an elevator to have your grain dried or waiting around for your dryer to catch up, can take a big bite out of your time and your profits.

Ensiling high moisture corn with the Corn Hog system can put you in the field 2-3 weeks earlier, eliminate drying bills and cut field and storage losses by up to 7%. And in some years, harvesting earlier could mean the difference between saving or losing much of the crop.

Improved feed efficiency and handling

Your crop has already been processed into a palatable, nutritious feed when it's put into storage. Field to feeding handling is complete, in one smooth operation.

McKee Corn Hog Grinder Thrower

- 540 RPM with Gravity Feed Hopper \$3635
- 540 RPM with Hydraulic Driven Loading Auger \$4600
- 1000 RPM with Gravity Feed Hopper \$3545
- 1000 RPM with Hydraulic Driven Loading Auger \$4510

Visit Us During the **NEW HOLLAND FAIR** Sept. 29 - Oct. 2 We're open every night

1 Unit Available For Rental - Call To Reserve For Your Use:

540 RPM with Hydraulic Driven Loading Auger \$115 per day - over 28 ton, \$3.50 per ton

ABC GROFF, INC.

STORE HOURS
 Mon., Tues., Wed. 7-5
 Thurs., Fri. 7-9
 Sat. 7-4
 Since 1890
 110 S. Railroad Ave.
 New Holland, PA 17557
 Parts 717-354-4191
 Sales 717-354-4731
 Service 717-354-8004

SPERRY NEW HOLLAND



AVCO NEW IDEA