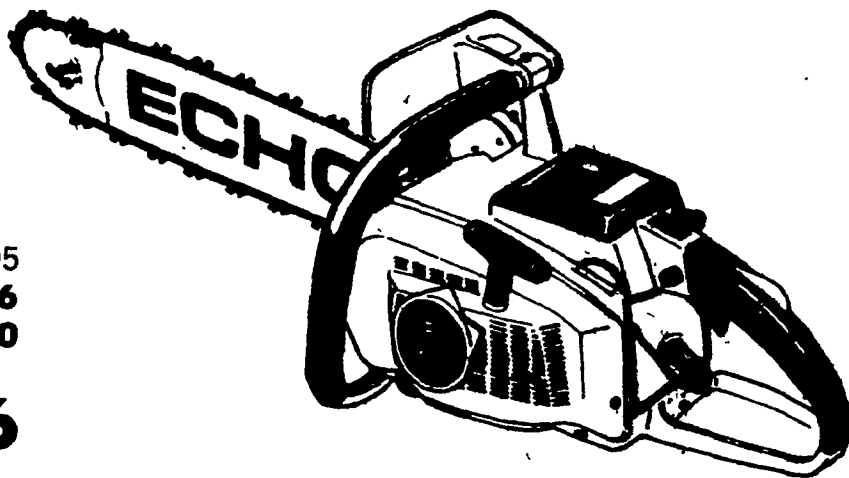


ECHO CHAIN SAW REBATE



CS-400 EVL
with 16" Bar

List Price \$309.95
Our Price ***247.96**
Rebate ***30.00**

YOUR COST \$217.96

CS-500 VL
with 16" Bar

List Price \$364.95
Our Price ***291.96**
Rebate ***36.00**

YOUR COST \$255.96

PLUS

FREE - Extra Replacement Chain with the purchase of either model!
SALE PRICE GOOD TILL OCT. 16, 1982



TRAILERS

Distributed by Farmersville Equipment, Inc. combining to offer you a **SUPER SPECIAL PRICE** On this New Trailer during the month of September.

GVW 5200 Lbs. & Electric Brakes & Tilt Bed & Swing-Away Jack & Pressure Treated Wood Floor & 2" Ball Coupler & 800 x 14.5-12 Ply Tires & 12 Ft. Bed Length & 6 Ft. Bed Width

Our Reg. Price \$1695.00

SEPTEMBER SUPER SPECIAL . . \$1295.00

Used Kubota B-6000 Diesel Tractor

12 HP, 4 WD, 3 point hitch
Excellent Condition

4 Used Reconditioned Grain Trucks in Stock with New Omaha Bodies & Hoists

Prices Start at **\$8500.00**

Stop in and Check Them Out!

LAMCO

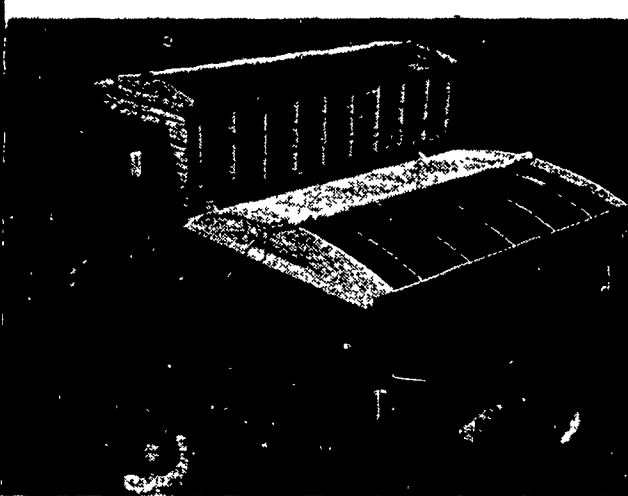


CLASSIC WOOD STAKE BODY
6' Wide x 8' Long with 20" Sideboards

INSTALLED On Your Pick-up For Only \$595.00 Complete

Now Available **LAMCO**
7½' Wide x 9' Long with 36" Sideboards
INSTALLED on Your 10,000 G.V.W. Dual Wheel Truck. 60" C.A. Required For Only \$795.00 Complete

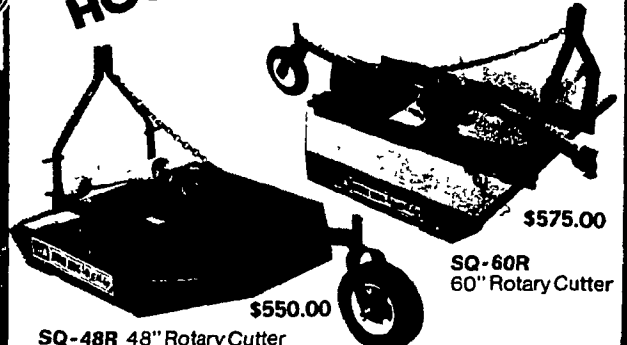
Midwest Coverall



Windproof, weather tight protection for your loads and box. Simply roll-on and roll-off Coverall while standing on the ground. The unit is available for truck, gravity and auger boxes 10 to 22 ft. long and 6 to 8 ft. wide. The cover is made of 18 oz. vinyl-coated nylon.

14, 16, 18 & 20 Ft. Models In Stock

BUSH HOG SQUEALERS



SQ-48R 48" Rotary Cutter \$550.00

SQ-60R 60" Rotary Cutter \$575.00

BUSH HOG ALLIED PRODUCTS CORPORATION
Now In Stock

USED LAWN & GARDEN TRACTORS

- Wheel Horse 700 Lawn Tractor, 7 H.P., 3 speed with 32" Rotary Mower..... ***695**
- Bolens 1253 Garden Tractor, 12 H.P., 6 Speed, with 42" Rotary Mower ***1495**
- White LGT 1610 Lawn Tractor, 16 H.P., Twin Cylinder, 4 Speed with 44" Rotary Mower ***1895**
- Bolens QT-17 Garden Tractor, 17 HP, Hydro with 54" Rotary Mower..... ***3495**

These Tractors Have Been Reconditioned By Us And Include A Full 90 Day Warranty

FARMERSVILLE EQUIPMENT INC.



Bolens
DIESEL TRACTORS

RD 4, East Farmersville Road, Ephrata, PA 17522
Located in the Village of Farmersville, Lancaster County
717-354-4271



Hours: Mon., Tues., Wed. & Fri. 7:30 A.M. to 5:30 P.M.; Thurs. to 8 P.M.; Sat. till 3 P.M.