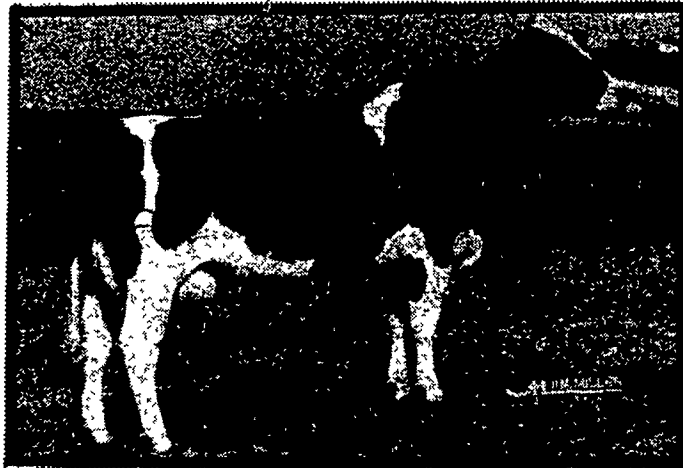


A SAMPLE OF THE BRANSDALE SHADY LANE INVITATIONAL

55 HEAD SELL - A Cross-Section of Huntingdon County's Highest Producing Herd, 1981, and Currently in 1982.

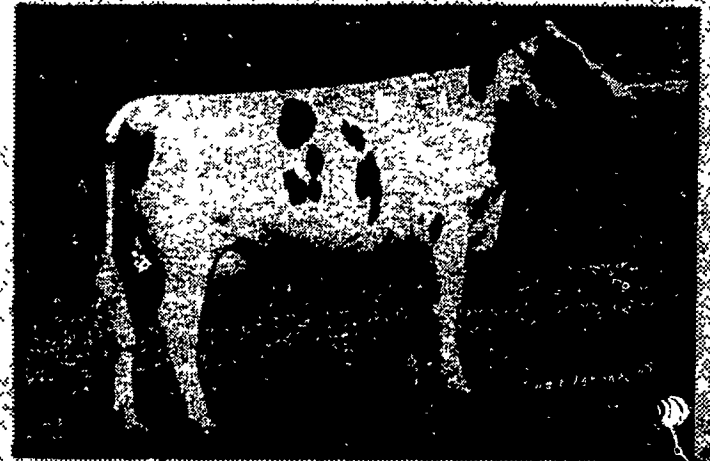
THIS COW SELLS WITH 5 DTRS.



BRANSDALE MAPLE FRAN MYRA
5-10 305d 20,229 816 (est)

MYRA'S DTRS. ALSO SELL
...by Astronaut - BRANSDALE FRAN ASTRO ELMIRA
2-6 365d 19,932 4.0% 788
...by Legacy - BRANSDALE FRAN LEGACY MYRRH
1-11 305d 15,924 605 (est)
Due 1-17-83 to Mars Tony
...by Ivanhoe Star - Due 3-22-83 to Board Chairman
...by Fleetridge Monitor - Twin heifers, born 1-29-82

THIS WILLOW SELLS WITH R MAPLE DAM



BRANSDALE MAPLE WILLOW MAGNIM
2-0 305d 17,558 609 (est)

DAM
BRANSDALE EAGLE MAPLE MAGGIE NO86
7-7 365d 27,404 3.8% 1052

MATERNAL SISTER TO DAM ALSO SELLS

BRANSDALE EAGLE HAGEN MARSHA-VG 86
6-0 305d 21,284 765 (est)

HOPEFUL'S DTR. SELLS
GILLBROOK IVANHOPE HEDDA-ET
Sired by Ivanhoe Star
Recently bred to Columbus

HER DAM



KINGSTEAD BURKE HOPEFUL
Twin - VG - 87
9-11 365d 21,023 4.0% 850
Sired by Tidy Burke Elevation

2nd DAM KINGSTEAD HI HOPE BESS
VG 88 GMD
6-8 357d 21,320 4.6% 978
Sired by Thompson Oaks Hi Hope

3rd DAM KINGSTEAD BESS-EX 92 GMD
5-2 365d 26,520 3.5% 924
Sired by Irvington Pride Admiral

4th DAM KINGSTEAD MISTRESS BESS-EX 94 GMD
13-3 365d 20,600 4.3% 892
lifetime 238,847 4.0% 9672

THIS ELEVATION FROM 87 PT. DAM SELLS



BRANSDALE ELEVATION GIGI
Due 11-14-82 to Columbus
Full sister born 12-81 also sells.

BAA 104% (entire herd)
Animals Selling are as follows: 7 VG — 13 GP — 6 G — 12
not scored

SALE HELD AT

DAVID & GLEN FITE SALE BARN
Quarryville, PA

