

Penn State 'hort' show entertainment bargain

UNIVERSITY PARK—Looking for an entertainment bargain? Penn State's 69th Annual Horticulture Show will be underway free to the public on September 11 and 12. Held in "big top" circuses tents in the flower gardens on University Drive, the show attracts some 20,000 visitors each year.

The event will feature exhibits from small fruits to flowers, illustrating how horticulture touches human lives. Visitors can tour the show from 10 a.m. to 8 p.m. on Sept. 11 and from 10 a.m. to 5 p.m. on Sept. 12.

Bridget K. Behe, senior at State College, and Robert D. Rowley,

senior from Indiana, will co-manage the many exhibits. The show is presented by the Penn State Horticulture Club.

A floriculture exhibit by Kimberly A. Uhde, senior from Bensalem, and Ronald L. Taddei, senior from Wyoming, will emphasize outdoor and indoor flower displays in a home setting. Outdoors, an arrangement of different types and colors of annual flowers will create a natural landscaped appearance surrounding the house.

Indoors, a kitchen and living room display will illustrate several methods to enhance the beauty of a home with flowering or foliage

plants. Uses for herbs will be displayed in the kitchen. Janice L. Baun, senior from Wexford, will direct the herb display.

Annual flowers used in the outdoor landscaping will also be

displayed indoors in cut flower arrangements.

Adjacent to the exhibit tent will be a sales tent managed by Barbara A. Buss, senior from Emmaus, and Lisa A. Blomquist,

junior from Meadville. Foliage and flowering plants, and ornamental trees and shrubs, will be on sale.

Improve soil tilth

LEESPORT—“Have you ever wondered why your topsoil seems so hard and soaks up water so slowly?” asks Duane E. Pysher, district conservationist of the U.S. Soil Conservation Service in Berks County.

The reason soil is hard could be due to a lack of adequate organic matter in the topsoil, he explained.

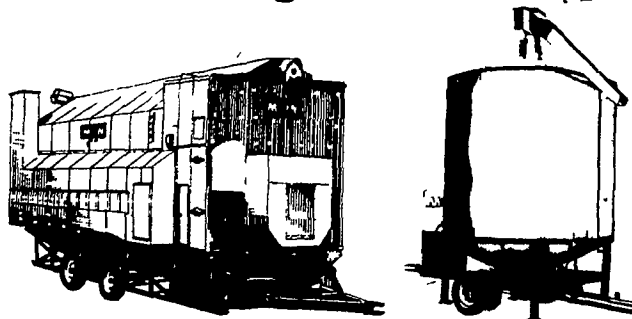
Organic matter helps prevent compaction of the topsoil and keeps the soil pores open, said Pysher, adding the amount of soil pores is important to the rate of infiltration of moisture into the soil thereby reducing runoff.

“Organic matter makes the soil easier to work by improving the soil tilth through aeration of the soil,” he said. “Organic matter can be added to your soil in several ways.

Leaving crop residue on the soil surface and incorporating it into the soil during tillage operations is one method. Another way is to plant a green manure crop for the purpose of tilling into the soil for organic matter, explained. Pysher. Another way is to spread organic matter such as leaves, grass clippings, animal manure containing straw on the soil surface and till into the soil.

Pysher noted “any of these methods will increase the organic matter of the soil and will improve its tilth and ability to absorb rain water.”

Don't get HEATED UP over storage. Keep COOL with proper conditioning the M&W way!



Model 450R

Model 575B

Now owning an M&W Continuous Flow or Batch Dryer is as simple as 1, 2, 3.

1. 10 to 20% down payment
2. 2 to 5 years payment plan
3. 10% to 12.9% simple interest

Down payment, interest rates and payment plan determined by dryer model and availability.

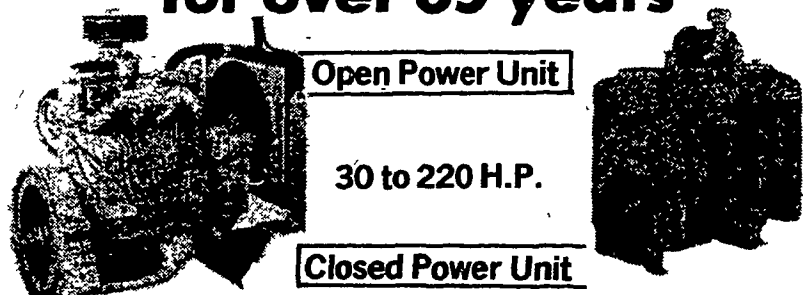
See your M&W Dryer dealer for details or call M&W at 800-637-1144 (Illinois residents call 800-252-0404). This M&W retail finance plan expires October 1, 1982.

M&W GEAR

Route 47 South
Gibson City, Illinois 60936
217/784-4261



WHITE ENGINES Powerful Performers for over 65 years



Open Power Unit

30 to 220 H.P.

Closed Power Unit

Ideal for shops, agricultural generator sets, equipment, etc.

**You Can Bank on White Engines
Quality and Performance**

Let Us Know Your Service Problems
24 Hour Service - Check Our Prices

DISTRIBUTOR:

HOOVER DIESEL SERVICE

PH: 717-656-6133

2998 West Newport Rd.

Ronks, Pa. 17572

2½ mile East of Leola - Along 772
DEALER INQUIRIES INVITED

DEALER:

B.B. DIESEL SERVICE

PH: 717-786-2173

RD 3, Quarryville, Pa.

2 miles west of

Georgetown on
Furnace Road

**If You're Interested
In Seeing**



**And Driving An
COMPACT
DIESEL
TRACTOR**



**COME TO
C.B. HOOBER & SON, INC.**

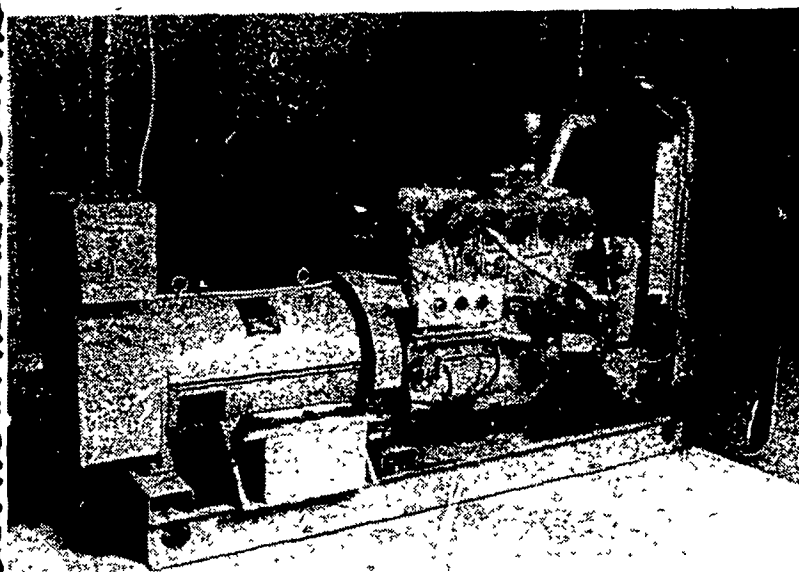
**RED POWER
SHOWDOWN**

FIELD DAY

Thursday, September 16, 1982
See Page C19 for details

KATOLIGHT

Solving Standby Power Problems...World Wide



Reliability should be foremost when selecting a Standby Power System for any industrial application. Katolight Standby Power Systems have a proven record of dependable operation throughout the world.

Katolight Corporation offers a variety of models to select from ranging in size from 2 KW to 1400 KW, gasoline, natural gas, liquefied petroleum gas or diesel fueled, 50, 60, or 400 HZ, 900 to 3600 RPM, with voltages from 12 VDC to 6600 VAC.

Katolight Control Systems provide instant response or any desired

response to normal utility source failure. Many combinations of safety features, remote start, automatic transfer, phase selection, and others are obtainable through the control system.

Optional equipment . . . like special fuel systems, weather proof housings, remote radiators, audible warning systems, battery chargers and more can be included to perform the necessary tasks of your specific application.

When you need reliability in a Standby Power System, contact the Engine Generator Set people . . . contact Katolight Corporation.

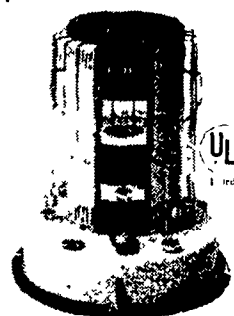
H
HERSHEY EQUIPMENT
COMPANY, INC.

SYCAMORE IND. PARK
255 PLANE TREE DRIVE
LANCASTER, PA. 17603
(717) 393-5807

Route 30 West At
The Centerville Exit



KEROSUN



**BOWMANS
STOVE
SHOP INC.**

Follow Signs from
Light at Hinkletown
on Rt. 322
717-733-4973
R.D. 3 Napierville
Rd., Ephrata, Pa.
Tues., Wed. 9-5;
Thurs., Fri. 9-9;
Sat. 9-4
Closed Monday
Financing Available

