

York Co. Sheep Producers have taste

RED LION — The second annual York County Sheep Producers "Get Acquainted" picnic was held here at the York County Fiddlers' Association grounds last Sunday.

The picnic, according to Sheep Association President, Greg Lau, is "a social gathering so they (the sheep producers) can try their own product—lamb.

Approximately 50 sheep producers from York and surrounding counties, were treated to a meal of barbecued lamb with all the trimmings. In addition, live

music from a band made up of some members of the Association, kept the group swinging.

The lamb served at the meal was halved and prepared on regular

chicken grills. Using 60 pounds of charcoal with salt and pepper as the only seasoning for the lamb, it took about 4½ hours to cook three lambs. The lamb was turned once every 15 minutes.—LD

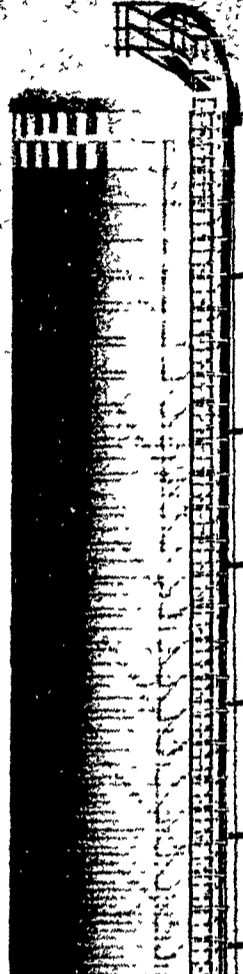
THERE'S NO BETTER WAY TO HANDLE HIGH MOISTURE CORN.

AND WE CAN PROVE IT TO YOU.

The many benefits of high moisture corn are all well known these days: No dryer costs, reduced shrinkage, less labor, less grain damage, fewer field losses, fewer bad weather problems—and a great feed!

And the only way to process high-moisture corn most effectively is with a Madison Grain-O-Matic®. Here's why:

The light gray color of the Vibra-Cor® staves reflect direct sun ray heat 2½ times better than the dark color used by others! These thicker truss-beam design staves also provide superior insulation value.



Thus gases in the Grain-O-Matic® structure expand and contract much less than in a steel structure. Inside pressure is regulated by a precision vacuum and pressure valve. Every structure is air-pressure tested by experienced Madison crews. Result: Better feed and no breather bags, so you can fill clear to the top of the structure with nutrition packed high-moisture grain. And you also get the Madison/Laidig bottom unloader that provides fast, positive delivery day after day for a long, long time.

MADISON

THE MADISON WAY IS THE VERY BEST WAY

-STOP IN OR CALL US TODAY-

- | | | | |
|--|--|--|--|
| Littletown, PA
ATLEE REBERT
717-359-5863 | Harrisburg, VA
HARMON SUPPLIES
703-434-4459 | Milford, DE
BENNETT MACHINE
302-422-4837 | Frederick, MD
GLADHILL TRACTOR
301-663-6060 |
| Lancaster, PA
L. H. BRUBAKER INC.
717-397-5179 | Chambersburg, PA
CUMBERLAND SUPPLY
FARM AND DAIRY
717-263-1965 | Rising Sun, MD
CECIL CO. DAIRY
301-658-6923 | Galena, MD
DUDLEY CHANCE
301-928-3834 |
| Silverdale, PA
I.G. AG SALES
215-257-5135 | Milton, PA
ERNEST WOLF
717-524-0931 | PARTICIPATING AGWAY DEALERS | |
| New Providence, PA
DON R. NISSLEY
717-786-7654 | Indiana, PA
CLAIR C. BEATTY
412-465-7368 | HARRIS J. BEZNER
215-375-0397 | ARNOLD L. DECKER
717-369-3607 |
| Myerstown, PA
SWOPE & BASHORE
717-933-4138 | Monroeville, NJ
S. JOHNSON HURFF
609-358-2565 | RICHARD P. COX, JR.
717-756-2829 | DAVID L. DONHARL
717-334-6438 (unlisted) |
| Ephrata, PA
TOM ZARTMAN
215-267-6814 | Sussex, NJ
WILLIAM SYTSEMA
201-875-5449 | PALMER C. DREESE
215-536-0274 | CHARLES C. DREESE
717-966-1445 |
| Orangeville, PA
FRANKLIN HESS
717-925-6939 | Belvidere, NJ
G. H. BUCHMAN
201-475-2185 | THOMAS H. HELTZEL
215-257-7802 | RONALD L. HEIKEN
717-243-5553 |
| New Berlinville, PA
ERB & HENRY
EQUIPMENT
215-367-2169 | Elmer, NJ
GEORGE COLEMAN
609-358-8528 | B. WILMER MARTIN
215-445-5652 | WILLIAM D. KNISELY
814-237-5515 |
| | | JOHN R. MYERS
302-738-0548 | BRADLEY E. MILLER
717-566-6243 |
| | | JOHN J. O'BRIEN, JR.
215-588-4133 | W. LEE SAMSELL
412-267-4681 |
| | | MELVIN R. STOLTZFUS
717-392-0066 | PAUL R. SHOWALTER
814-276-3733 |
| | | KENNETH M. WHIPP
717-265-5353 | HARRY E. STUGART, JR.
412-865-2892 |
| | | THOMAS KALASKY
412-349-5987 | MAX L. TEARS
814-793-4306 |

Southern Division Sales Mgr. - Larry Zercher - 301-834-6364
Western District Sales Mgr. - Jack Stewart - 412-279-9598

MADISON SILO CO. OF PENNSYLVANIA
1070 Steinmetz Rd. Ephrata, Pa. 17522 Phone 717-733-1206

CLARENCE E. WOLGENUTH
302-697-1983



FOR GRAIN STORAGE

CONTACT

ROBERT McCOMSEY
Cochranville, PA 19330
Ph: 215-593-2157

RAY HURST
Pine Grove, PA 17563
Ph: 717-345-3290

RICHARD PRICE
Box 305
Arendtsville, PA 17303
Ph: 717-677-6986

CHESTER STOLTZFUS
RD 2 Watsonstown, PA 17777
Ph: 717-649-5321

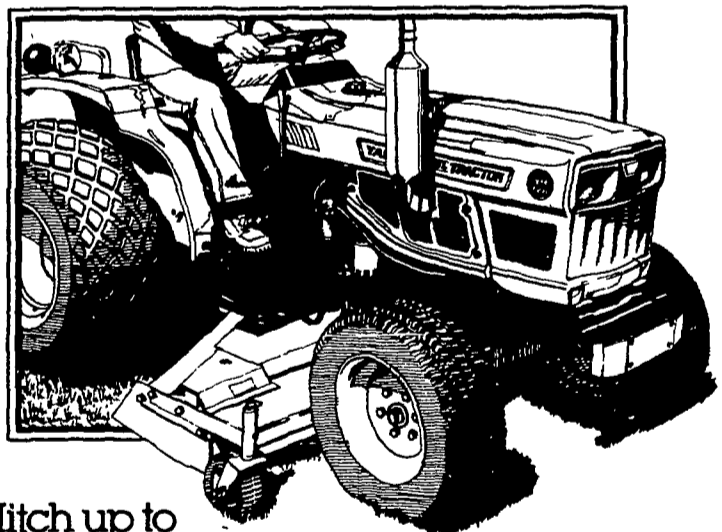


HUSKEE BILT QUALITY FARM BUILDINGS

YANMAR

HELP HAS ARRIVED!...

with a Yanmar Tractor and Equipment



Hitch up to a world of difference.

- Mid-mount and Rear-mount Models available.
- 8 Models to choose from.
- Cutting widths from 45" to 72".
- Category I, 3-point hitch models.
- Finishing mowers... rough terrain mowers.
- Ready for immediate delivery.



Tractors and Implements
A World of Difference

13, 15, 18, 22, 26 and 33 H.P. Models
Available with St. Shift or Auto Trans.

★ 100% FINANCING AVAILABLE ★

MARTIN HARDWARE & EQUIPMENT CO.

Rt. 501, 1½ Miles South of Schaefferstown, PA
Phone 717-949-6817 Open Mon.-Fri. 8 to 8; Wed. 8 to 12; Sat. 8 to 5