

# Poultry Markets

## Weekly New York Egg Market

	From Friday, Aug. 27 to Sept. 3				
	Fri.	Mon.	Tues.	Wed.	Thurs.
<b>WHITE</b>					
Jumbo	83	83	83	83	83
Ex Large	75	75	75	75	75
Large	71	71	71	71	71
Mediums	61	61	61	61	61
Pullets	44	44	44	44	44
<b>BROWN</b>					
Jumbo	—	—	—	—	—
Ex Large	90	90	90	92	90
Large	85	85	85	87	85
Mediums	63	63	63	63	63
Pullets					
Peewees	Unquoted				
<b>Off Grade</b>					
Large	61	61	61	61	61
Checks	35	35	35	35	35

**BREAKING STOCK:** Prices for breaking stock per case in the Northeast for the same period include: Friday — 12.00 - 12.60; Monday — 12.00 — 12.60; Tuesday — 12.60 - 13.20; Wednesday — (52-54 Lb.) 12.60 - 13.50; Thursday — 12.60 - 12.90.

Copyright 1982 by Urner-Barry

## Delmarva Poultry

**Thursday, Sept. 2**  
Report supplied by USDA  
**MARKET COMMENT:** RTC movement on whole birds improved and clearing better. Supplies remain ample on 3 lb. and over size, which have sold and still available at 44 cents. Legs and wings well cleared & breasts also improved. Slaughter schedules very heavy and almost all plants tentatively indicate no kill on Saturday and Monday. Live supplies fully adequate & undertone unsettled.  
Today's L.T.L. asking prices are unchanged on U.S. Grade A at 49-53 cents.  
Estimated slaughter of broiler fryers in Delmarva (000). Estimated 9/2 1,941; Actual 8/27 1,849; Actual 8/31 1,875; Average Weights 8/31 4.40; 8/24 4.33.

## Lancaster Feeder Cattle

**Friday, Aug. 27**  
Report supplied by USDA  
**MARKET COMMENT:** Today 319 Last Friday 183 Last Year 565  
**TREND:** Insufficient volume in recent weeks for a market test. Demand good for all grades and classes. Supply included 121 in graded sale, sold in lots of 10 or more.  
**FEEDER STEERS:** Medium and Large Frame 1: Three lots 765-845 lbs. 62.00-62.85 and one lot 910 lbs. 61.50. Medium Frame 1-2: One lot 805 lbs. 61.00 and one lot 590 lbs. 60.00. Large Frame 1-2: Couple lots 665-765 lbs. 60.50-60.75; one lot 1060 lbs. 57.25. Small Frame 1-2: One lot 340 lbs. 60.00. Large Frame 2 (Holsteins): One lot 980 lbs. 49.00.  
**FEEDER HEIFERS:** Medium Frame 1-2: One small lot 480 lbs. 50.25.

## Heinsey's Poultry Market

Root's, East Petersburg  
Tuesday, Aug. 31  
Report supplied by auction  
**MUSCOVY DUCKS, DRAKES:** range .78-1.06 per lb.  
**MUSCOVY DUCKS, HENS:** range .60-.82 per lb.  
**PEKIN DUCKS:** range .30-.52 per lb.  
**PULLETS:** 6-9 lbs. range .50-.64 per lb.  
**RED FOWL:** 4-5 lbs. range .13-.22 per lb.  
**RED FOWL:** 5-6 lbs. range .22-.36 per lb.  
**CROSSBRED FOWL:** 5-9 lbs. range .24-.38 per lb.  
**CROSSBRED ROOSTERS:** 4-6 lbs. range .40-.72 per lb.  
**CROSSBRED ROOSTERS:** 7-12 lbs. range .30-.56 per lb.  
**GUINEA FOWL:** range 1.86-2.08 per lb.  
**BANTY ROOSTERS:** range 1.00-3.25 ea.  
**BANTY HENS:** range .25-1.25 ea.  
**GEESE:** 8-12 lbs. range .30-.60 per lb.  
**LEGHORN ROOSTERS:** range .24-.32 per lb.  
**PIGEONS:** range .90-1.25 ea.  
**WHITE PIGEONS:** range 1.25-1.75 ea.  
**RABBITS:** 4-6 lbs. range .50-.78 per lb.  
**RABBITS:** 7-10 lbs. range .30-.56 per lb.  
**GUINEA PIGS:** range .25-.75 ea.  
**GOATS** 41 head: range 21.00-70.00 ea.  
**KID GOATS:** range 18.00-34.00 ea.  
**TOTAL AMOUNT COUPS:** 1,066.

## Nest Run Eggs

Prices are from Egg Clearinghouse, Inc., (ECI) Durham, N.H. and reflect trading prices for gradable nest run eggs (GNR) on ECI, a nationwide trading center for producers, packers and marketers. GNR eggs are classified by weight in 30-dozen cases, and traded in lots of either 300 or 750 cases. Prices are FOB buyers dock, and are computed Tuesday and Thursday of each week. This week's prices for each classification were:

Classification	Net Weight	Aug. 31	Sept. 2
	Per Case	Tuesday	Thursday
Class 1 - Large	48 lbs.	55	52
Class 2 - Large	45 lbs.	51	49
Class 3 - Medium	42 lbs.	47	47
Class 4 - Small	39 lbs.	34	34
Breaking Stock	48 lbs.	44	43
Checks	48 lbs.	39½	38½

## N. E. Weekly Shell Egg Report

**Tuesday, Aug. 31**  
Report supplied by USDA  
Prices paid per dozen Grade "A" Brown eggs in cartons delivered to retail stores:

	Ex. Large	Large	Medium	Sm all
MASS.X	91-97	85-91	70-74	47-52
Mostly	93-95	87-89	71-72	49-50
N. HAMP.	86-92	80-86	63-69	40-46
Mostly	88-91	82-85	65-68	42-45
R.I.	94-95	88-89	71-72	49-50
VERMONT	93-1.00	87-95	70-78	—
Mostly	95-97	89-91	72-73	—
MAINE	93-94	87-88	70-72	47-48

X Includes Central and Western Sections only.

## Philadelphia Eggs

**Thursday, Sept. 2**  
Report supplied by USDA  
**MARKET COMMENT:** Cartoned egg orders improving and generally range fair to good. Floor stocks adequate to fully adequate offerings of graded eggs available and finding few buyers. Ungraded offerings available if needed but sellers are not pushing as hard as graded. Undertone steady.  
Prices to retailers: Sales to volume buyers, consumer grades white eggs in cartons delivered store door:  
A Extra Large 69-75; A Large 68-70; A Medium 57-59.

## New York Multiple Drop Broiler Report

**Thursday, Sept. 2**  
Report supplied by USDA  
Current broiler/fryer negotiated prices for immediate delivery includes mostly multiple-drop shipments to New York City from Delmarva.  
RANGE: U.S. Grade A 47-49, 825 boxes; Branded U.S. Grade A 50½-53, 12,064 boxes.  
WTD. AVG.: U.S. Grade A 48.64; Branded 52.46.

## Eastern Pa. & N.J. Poultry

**Thursday, Sept. 2**  
Report supplied by USDA  
**Market Comment:** Price remain generally unchanged Offerings irregular but adequate for current needs in most quarters Canner pack demand fair.  
**Light Type Hens:** prices paid a farm 4-6, mostly 5-6.  
**F.O.B. plant:** 8-8½, mostly 8.  
**Heavy Type Hens:** TFTR.



## ATTENTION FARMERS

**EVERY MONDAY**  
**HATFIELD PACKING CO. and**  
**BAUMS MEAT PACKING**  
Will Receive Your  
Hogs and Cattle at the  
**DANVILLE LIVESTOCK MARKET**  
RD4, Danville, PA

- We will receive your hogs from 8 AM to 12 Noon every Monday. Your hogs will be weighed and paid for immediately.
- We will also accept your sows & boars.
- Your cattle will be received from 12 Noon to 4 PM. We will either pay for your cattle immediately or you may sell them dressed weight.
- There will not be a commission or yardage fee deducted from your check.
- You may call our office Monday morning and we will be able to tell you the base price for hogs for the day.
- Please come and give us a chance to continue doing business with you through this method.

**FOR INFORMATION CALL**  
**717-275-2880**



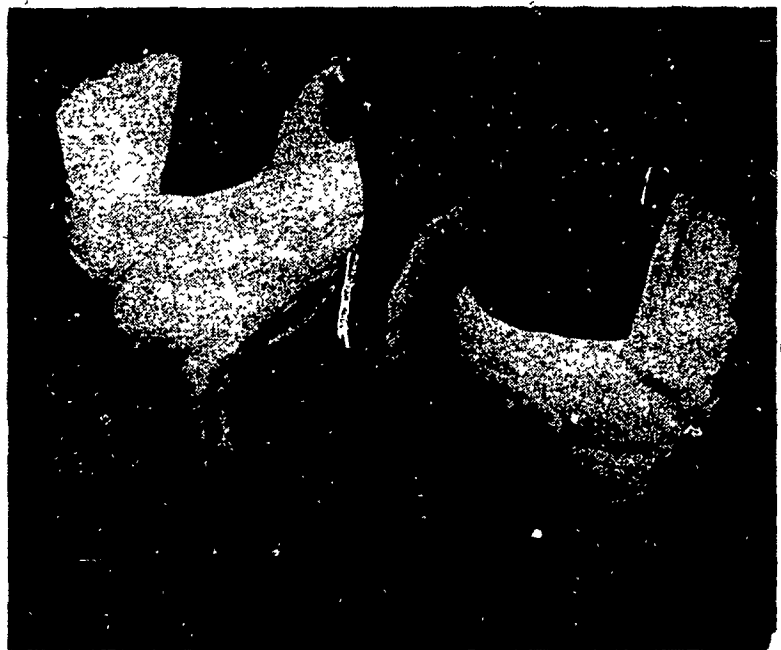
## Two Ways To Improve Your Profit Picture XL & DK

Two layers with distinctly different characteristics... From two separate research programs.

You don't have to buy from two different companies to get the two top layers on the market.

The XL shows excellent production under many management conditions. The DK responds best to finely tuned, close management.

DEKALB Layers are bred to possess the economic traits most applicable to your operation. You do have a choice... The high productivity XL or the high efficiency DK.



## CONTACT:

**Moyer's CHICKS, INC.**

**DEKALB**  
BROWN & WHITE  
EGG LAYERS

Quakertown, PA 18951  
(215) 536-3155

HUBBARD  
WHITE MT.  
BROILERS

Copyright 1982 by Lancaster Farming  
P.O. Box 366 - Lititz, PA 17543  
Office: 22 E. Main St., Lititz, PA 17543  
Record-Express Office Building  
Phone: Lancaster 717-394-3047  
or Lititz 717-626-1164

Robert G. Campbell, Publisher  
Sheila M. Miller, Editor  
Dick Anglestein, Staff Writer  
Debra L. Koontz, Home Editor  
Donna M. Tommelleo, Staff Writer

**CORRESPONDENTS**  
Ginger Secrist Myers, Adams County  
Littlestown 717-359-7542

Patty Gross, Bedford, Blair, Huntingdon counties  
Martinsburg 814-793-4256

Jane Bresee, Bradford County  
Ulster 717-358-3346

Beth Hemminger, Cumberland County, Franklin  
and Perry counties  
Newville 717-486-5322

Sally B. Barr, Lancaster County  
Columbia 717-285-4926

Joyce Bupp, York County  
Seven Valleys

Subscription Price:  
\$7.50 per year; \$13.00 - 2 years  
\$14.00 per year outside of  
PA, NJ, MD, DE, NY, VA & WV

Established November 4, 1955  
Published every Saturday  
by Lancaster Farming, Lititz, PA  
Second Class Postage paid at  
Lititz, PA 17543 USPS 304-040

For address change form or new  
subscription see Mailbox Markets.

Members of Newspaper Farm Editors Assn.,  
Pa. Newspaper Publishers Association,  
and National Newspaper Association.