

New Inter-State head

(Continued from Page A25)

He also started to work for Inter-State that year as an economist. Ten years later he was promoted to assistant manager. In 1960 he was named manager before assuming responsibilities as general manager in 1963.

Honan has served on the Board of Directors of the National Milk Producers Federation, the American Dry Milk Institute and Valley Lea Dairies Inc.

He has been active in youth and community organizations and currently serves on the Moorestown, N.J., zoning board. Honan and his wife, Margery, are members of the First Presbyterian Church in Moorestown. They have one son.

Hand, a 25-year employee, will be the fifth head of the cooperative. A native of Fort Fairfield, Maine, he graduated from the University of Maine with both bachelor and master of science degrees in agricultural economics. He received his Ph. D. from Penn State, specializing in dairy marketing.

He spent two active years in the U.S. Army, serving in Korea as a First Lieutenant in the Infantry. He retired from the U.S. Army Reserves in 1962, holding the rank of Colonel.

Hand joined Inter-State in 1957 as an economist. In 1969, he was elected secretary by the Board of Directors. Two years later he was promoted to assistant general

manager of the cooperative.

Currently, Hand serves as secretary of the Pennmarva Dairymen's Federation. He is also secretary of Holly Milk Cooperative and assistant treasurer of Philadelphia Dairy Council, Inc.

Hand is an active member of the Hatboro Kiwanis. He belongs to the Military Order of World Wars, the Reserve Officers Association, the Association of the U.S. Army, the Senior Army Reserve Commanders Association, the Philadelphia Society for Promoting Agriculture and the American Management Associates.

He and his wife, Georgette, live in Warminster and have six children. They are members St. Joseph's Roman Catholic Church in Warrington.

**LATE CONSIGNMENT TO
NEW HOLLAND SALES STABLES
DAIRY SALE
WEDNESDAY, SEPTEMBER 8**
(See Ad Page D-46 this issue)
HERD OF 25 HEAD
Fresh, Springers, balance in all stages of production.
Majority of these are 1st and 2nd calf heifers, 30 day test.
Consigned by Wandon Diehm.

PIG SALE "STATE GRADED" AT CARLISLE

FRIDAY-SEPT. 10-
1:30 P.M.
GRADING 8:00 AM-12
NOON

CARLISLE

LIVESTOCK MARKET INC.
181 Exit 12 (717) 249-4511

HAY SALE

Starting
TUES.-SEPT. 21-12
Noon
Then EVERY TUES.

SPECIAL NOTICE
New Order For Quality Milk
Fed Vealers (140-230 lbs.)
VERY STRONG DEMAND!!

IMPROVE FEED PALATABILITY AND PROFITABILITY BY USING LIQUID AND DRY MOLASSES PRODUCTS IN YOUR FEED FORMULATION FOR ANIMALS FROM ZOOK MOLASSES CO.

- Liquid Feeding Cane Molasses
- Honey Brook Brand Dried Molasses - 50 lb. Bag
- Z Brand Dried Molasses - 50 lb. Bag
- Honey Brook Energiblock - All Natural 20 - No. Urea
- Energiblock - Hi Protein 36
- Energi Cubes for Horses

GOOD FOOD INC.

GOLDEN BARREL Household Molasses and Syrup

- ★ BAKING MOLASSES
- ★ PANCAKE SYRUP
- ★ CORN SYRUP
- ★ WORCHESTERSHIRE SAUCE
- ★ BARBADOS MOLASSES
- ★ HONEY
- ★ SORGHUM SYRUP
- ★ BLACKSTRAP MOLASSES
- ★ TABLE SYRUP
- ★ SHOO-FLY PIE MIX

MOLASSES FOR THE ANIMAL or THE KITCHEN

Contact:

ZOOK MOLASSES CO.
WEST MAIN ST., BOX 160, HONEY BROOK, PA. 19344
Phone 215-273-3776 or 717-393-3987
Call toll free in area code 215 & 717: 800-662-7464

ESTATE SALE

Will offer for sale. Very valuable picturesque farm of John R. and Fannie Bell Fridinger (deceased) Known as Rocky Spring Farm. Located two miles west of Hagerstown, Maryland. Along U.S. Route 40. Close to Interstate 81 and 70. In front of Washington County Courthouse.

TUESDAY, SEPTEMBER 21

Between the hours of 1:00 & 3:00 P.M.

All that farm with the improvements thereon. Lying in Election District #24. Washington County, Maryland. Farm is located two miles west of Hagerstown, Maryland. Fronting one mile on U.S. Route 40. With city water line running entire length of farm. Farm contains 135 acres of land, more or less. More particularly described in Liber numbers 217 and 377, Folio numbers 608 and 158 among the Land Records of Washington County, Maryland. Improved by two houses. Main house is a two and one half story baronial stone house. Containing four rooms, reception hall and enclosed porch on first floor and large front porch on second floor. Full attic. Breezeway, with a two car stone garage attached. Partial basement, divided into three rooms, with concrete and dirt floor. Oil fired steam heat. Heat only on first floor. Fireplace in every room. Slate roof. Tenant house is two and one half story weather board house. Containing three rooms and bath and enclosed porch on first floor. Three rooms on second floor. Attic, basement with large spring. Concrete floor. Large fireplace in basement. Oil fired hot air heat. Metal roof. Large bank barn, hot pen, wagon shed, shop, chicken house. Metal roof on all out buildings. Water is supplied by large spring. Stream also runs through pasture land. Many researchers believed the original home site to be the home of Elizabeth Kershner, who became the bride of Jonathan Hager, founder of Hagerstown, Maryland. All growing crops will be reserved until harvested.

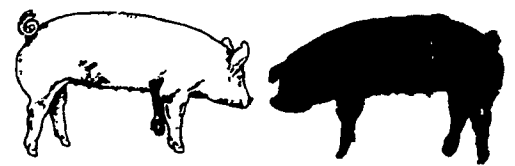
TERMS OF SALE: 10% day of sale. Balance within thirty days. Taxes to be pro-rated as day of settlement. Documentary stamps and transfer taxes to be paid by the purchaser. Open house Sat., Sept. 4 and Sun. 5, from 2:00 P.M. to 4:00 P.M., Sat. 11 and Sun. 12, from 3:00 P.M. to 5:00 P.M., Sat. 18 and Sun. 19, from 1:00 P.M. to 4:00 P.M.

**JOHN R. FRIDINGER, JR.
PHYLLIS A. GODLOVE
PER. REPRESENTATIVES**

AUCT. Lewis M. Renner

SWINE

SWINE



Yorkshires

Durocs

**DELAWARE TEST
STATION SALE
TUESDAY, SEPTEMBER 7
6:30 P.M.**

These Yorkshire boars sell:

No.	Daily Gain	Back Fat	Days to 230
21-6	2.10	.80	153
22-8	2.06	.73	151
21-3	2.34	.60	151

The only boar to score perfect underline & soundness.

Mail bids call 302-738-2523.

We can make delivery on boars purchased at this sale.

Call or Write

Yorkshires
Leon L. Arnold
Rd. 7 Box 705
Lebanon, PA
717-273-5880

Durocs
Lawrence Arnold
1245 Cumberland St.
Lebanon, PA
717-272-9827

Next Production Sale November 5th

HELP WANTED

HELP WANTED

Crop Improvement Technician Sulbra Crop Management Association

Towanda, Pa. 18848

Individual will work under direction of Association Board of Directors and in coordination with County Extension Agents.

Duties: Collect soil samples; monitor members' fields for weeds, insects, and diseases; collect crop production information; assist in crop production planning and advise members on cultural practices.

Qualifications: B.S. in Agronomy or related fields.

Send resume, transcript, and references by Sept. 15 to:

**Sulbra Crop Management
Association**
c/o Cooperative Extension Service
Courthouse Annex
Towanda, Pa. 18848

SERVICES OFFERED

SERVICES OFFERED

SERVICES OFFERED

SERVICES OFFERED



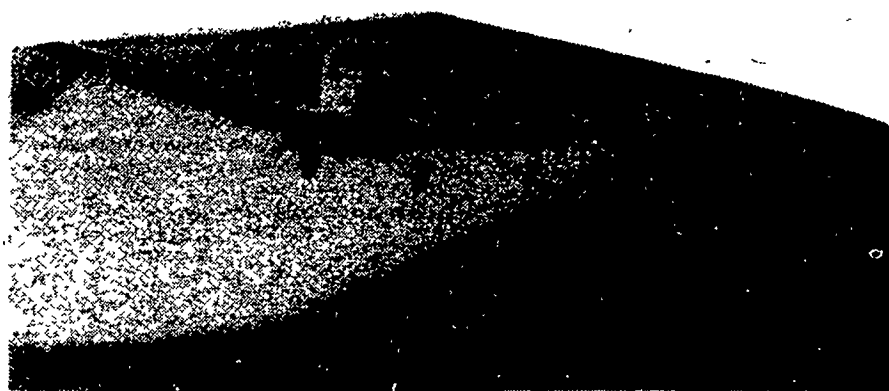
**Agronomists & Farmers Have Found
It is more profitable
to feed your crop
than fertilize your soil
SURE CROP LIQUID
PLANT FOOD**



**Ideal For:
Crop Starter
Foliage Feeding
Winterizing Crops
Transplanting**

**No Bags
No Shoveling
No Waste
Plant 30 Acres
or More On Fillup**

Those who use us like us
717-469-2864
Representative inquiries invited



Now Is The Time To Foliage Feed Soybeans