

# Livestock market and auction news

## Carlisle Auction

Carlisle, Pa.  
Tuesday, Aug. 31

Report supplied by auction

**CATTLE:** Steers were 4.00 to 4.50 lower; Heifers were 2.00 to 2.25 lower; Cows were 75 cents higher with very active bidding; Bullocks were 50 cents lower and Bulls were 2.00 to 2.25 lower. Steers: Low Choice 60.25-62.00; Good 54.00-

57.25; Standard 51.00-53.00; Heifers: Good to 55.50; Standard 45.25-50.50; Utility to 42.50. Cows: Early bird pen 1.00 higher! Utility & Commercial 42.25-44.60; Cutter 40.00-42.00; Canner & Low Cutter 34.00-40.00; Shells 30.75. Down. Bullocks: Good 56.25-57.50; Standard 51.00-56.00; Utility to 47.25. Bulls: Yield Grade No. 1

51.00-53.85; Yield Grade No. 2 to 45.25.

**FEEDER CATTLE:** Steers were steady; Heifers were steady to 1.00 higher, Bulls were 2.00 higher! Light run of feeder cattle. Steers: Medium 445-485 lbs. 51.00-55.00; Medium 725-785 lbs. 52.00-57.00. Heifers: Medium 265-292 lbs. 55.00-58.00; Medium 400-475 lbs. 39.00-

47.00; Medium 560-575 lbs. 49.00-49.50. Bulls: 1 lot Medium 355 lbs. 58.00; Medium 560-650 lbs. 45.00-56.00.

**CALVES:** Strong Demand! (esp. for vealers from 140 to 230 lbs.). Vealers were 7.00 higher! Farm Calves were 2.00 lower for hol. bulls and 4.00 higher for hol. heifers. Vealers: Choice 90.00-108.00; Good 75.00-90.00; Standard & Good 60.00-75.00; Standard & Good 55.00-65.00. Back to farm: Hol. Bulls 80.00-88.00, Hol. Heifers 80.00-98.00.

**HOGS:** Strong demand; prices 75 cents lower; well above daily market price. US No. 1-2 65.50-67.00; US No. 1-3 61.50-65.00; US No. 2-3 57.00-61.00; US No. 2-3 51.50-56.00. Sows: 6.00 higher! US No. 1-3 57.75-59.50; No. 2-3 49.00-55.50. Boars: 5.50 higher! 45.50-53.50.

**FEEDER PIGS:** US No. 1-3 20-24 lbs. 35.00-38.00 Hd.; No. 1-3 36-44 lbs. 47.00-60.00 Hd.; No. 1-3 50-63 lbs. 60.00-62.00 Hd. No. 1-3 100-128 lbs. 75.00-79.00 lb.

**SHEEP:** Lambs: Good 50.00-53.50; Utility 34.00-36.00. Goats: 30.00-65.00 Hd.

Next state graded pig sale: Friday, Sept. 10, 1:30 p.m., Sale night every Tues. 7:00 P.M. Misc. sale 4:15 p.m.

## Belknap Auction

Dayton, PA

Wednesday, Sept. 1

Report supplied by PDA

**CATTLE 142.** Compared with last Wednesday's market; one Choice slaughter steer at 55.25, one Good at 54.00, few Standard 48.50-50.75. One Choice slaughter heifer at 55.00, one Good at 54.75, few Standard 47.25-51.00. Utility & Commercial slaughter cows 41.00-43.75, few 45.00-47.00, Commercial No. 4-5 37.50-41.25, Cutters 37.50-41.25, Canner & Low Cutter 30.00-38.00, Shells down to 24.00. Few Utility slaughter bullocks 40.00-44.50. Few Yield Grade #1 and 2 1005-1605 lbs. slaughter bulls 47.00-49.75, one at 52.25. Large Frame #2 390-750 lbs. holstein feeder steers 37.00-43.25; Medium & Large Frame #1 335-635 lbs. feeder heifers 42.75-50.00, few Medium & Large Frame #2 430-555 lbs. 40.00-42.00.

**CALVES 90.** Few Choice vealers 75.00-85.00, few Good 66.00-77.00, Standard & Good 90-110 lbs. 50.00-60.00, 50-85 lbs. 40.00-50.00. Farm calves, holstein bulls 95-125 lbs. 65.00-109.00, 80-90 lbs. 56.00-62.00; beef cross bulls & heifers 50-100 lbs. 60.00-85.00; Slaughter calves grading Good & Choice 170-290 lbs. 47.00-60.00.

**HOGS 222.** US No. 1-2 215-240 lbs. barrows & gilts 66.00-66.50, No. 1-3 210-250 lbs. 65.00-66.00, one lot No. 1-3 198 lbs. at 63.00, few 155-170 lbs. 52.00-59.00. US No. 1-3 305-535 lbs. sows 56.75-61.75. Boars 42.00-43.80.

**FEEDER PIGS 144.** US No. 1-3 15-20 lbs. feeder pigs 17.00-25.00 per head, No. 1-3 30-45 lbs. 34.00-42.00, No. 1-3 70-90 lbs. 51.00-68.00 per head, one lot No. 1-3 118 lbs. 68.00 cwt., Utility 30-40 lbs. 21.00-29.00 per head.

**SHEEP 25.** Few Good & Choice 75-85 lbs. spring slaughter lambs 50.00-51.00, one lot Good 58 lbs. at 40.00. Slaughter ewes 15.00-19.50.

## New Holland Horse

New Holland, Pa.

Monday, August 30

Report supplied by auction

Reported receipts of 251 head of horses, mules, and ponies. Market: steady.

Better horses 525.00-1000.00; Driving horses 375.00-1650.00; Riding horses 350.00-475.00; Lightweight killers 350.00-475.00; Heavyweight killers 525.00-600.00; Mare Ponies 35.00-135.00; Colts 15.00-55.00; Geldings 35.00-135.00; Larger ponies 150.00-255.00.

**guttanit**  
**Corrugated Asphalt Roofing & Siding**  
**Nothing equals it.**

- 25-year warranty against leakage.
- Doesn't expand or contract like metal roofing materials.
- Sound and temperature insulation values are superior to metal.
- Because of Guttanit's unfinished —

formity it fits and seals perfectly.

- Light weight and flexible.
- Easy to install. Needs no special tools or full support.
- Available in 5 colors. (Special colors on request.)

**\$6.39** per sheet (approx 20 sq ft per sheet)

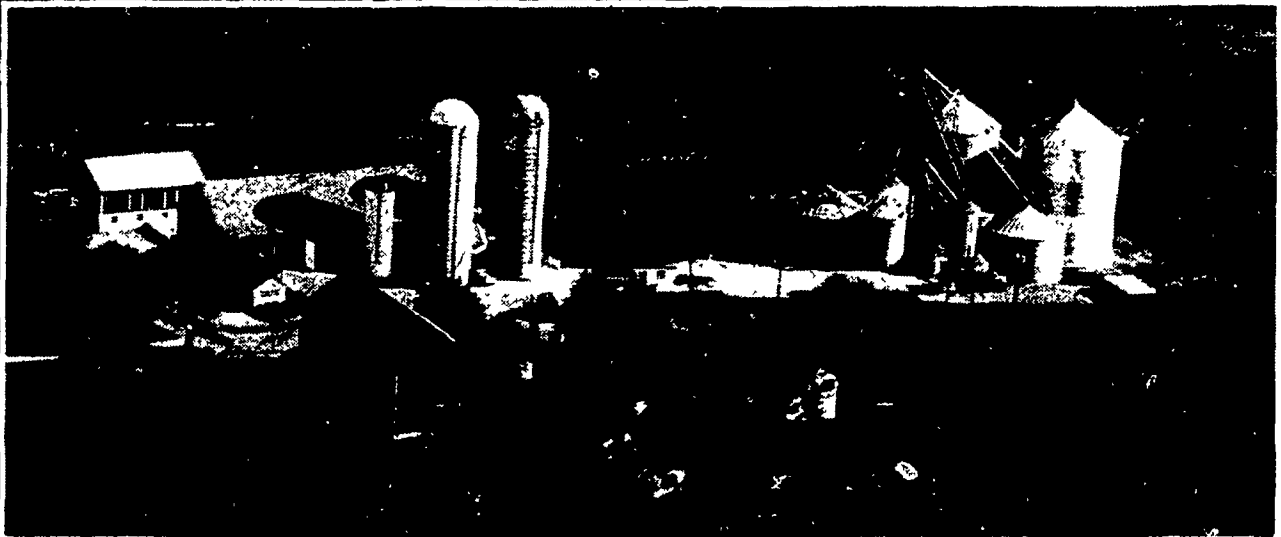
A FULL SERVICE "LITTLE STORE" WITH OLD TIME PRICES  
COLLEGE & CHESTNUT STS., DELTA, PA.  
**(717) 456-5833**

DELTA LUMBER & BUILDING SUPPLY

Mon. & Thurs. 7:30 AM - 7:30 PM; Tues., Wed., Fri. 7:30 AM - 5:00 PM  
Sat. 7:30 AM - 3:00 PM

## Some agents talk about money-saving farmowner's protection

Your Agway farm insurance agent gives you proof



Agway Farmowner's Insurance gives you more complete property and liability coverage, at a money-saving price. But don't take our word for it. Ask your Agway Insurance agent for proof.

### Proof about quality coverage

A point-by-point comparison will show you exactly how Agway Farmowner's Insurance compares to your present policy (or policies), in important coverages for property and liability protection. Plus, you will see additional benefits like extra expense coverage to continue operations following a loss, and important liability coverages that include legal defense costs.

### Proof about farm-oriented service

Agway agents spend 100% of their time serving farmers like you. Your Agway agent is a farm insurance specialist, with the training to design a single policy that covers all your protection needs, including your home, personal property, barns, machinery, livestock, and even your produce.

### Proof about the best price

Best of all, by combining all your coverage into one convenient package, your Agway agent can offer you a money-saving price and payment plans consistent with farm cash flow. In the vast majority of

cases a comparison proves that Agway Farmowner's Insurance can offer you more complete protection at a better price. For your proof, fill out and send the coupon below. There's no obligation!

Yes! I want **PROOF**

Have an Agway Insurance agent contact me to arrange a free cost and coverage comparison, so I can see for myself how Agway Farmowner's Insurance can give me better protection, at a money-saving price.

Name \_\_\_\_\_  
Address \_\_\_\_\_  
City \_\_\_\_\_ State \_\_\_\_\_ Zip \_\_\_\_\_  
County \_\_\_\_\_ Phone \_\_\_\_\_

Send this coupon to Agway Insurance, P.O. Box 4851, Syracuse, N.Y. 13221, or call toll-free 1-800-448-5523, except New York State call 1-800-962-5887.

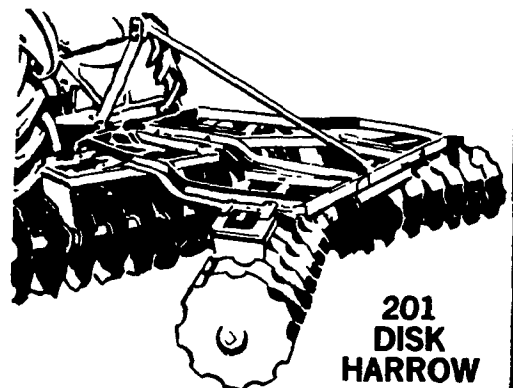
LF

**Working for people who work the land**

AGWAY INSURANCE  
LIFE • HEALTH • FARM



**Ford 201 and 202 mounted harrows... economy models that do the job**



**201 DISK HARROW**

- Flexo-hitch lift-type follows ground contours like a shadow.
- Widths 6½ to 10-feet.
- 16 or 18-inch notched or plain blades.
- White iron or anti-friction bearings.
- 6 to 30 ft. Lift & Pull



**ALLEN H. MATZ, INC.**

505 E. Main St., New Holland  
Ph: 717-354-2214

SERVING THE COMMUNITY  
THIRTY-TWO YEARS  
LANC. CO'S OLDEST FOR DEALER