

TRUCKS & TRAILERS

Army Trucks - diesel, 5 speed, high-low range, tandem axle, 900:00x20 tires. \$4,200. 609-769-3183

STORAGE TRAILERS FOR RENT - Delivered to your sight, economical, 301-771-4529 anytime or 717-354-7006.

For Sale - 10' wood livestock body; 21' wood livestock body; 26' alum. livestock body; 18' steel flatbed with tailgate loader. M. H. Eby, Blue Ball 717-354-4971.

1978 Chevy pickup, crew cab, V8 4 speed dual wheel, 10,000 GVW. 717-865-6710

1974 CO 4070 Transtar A.C., P.S. 318 DD Horton Fan Clutch, Jake Brake, 13 speed 38000# Rear, very clean, new Imron paint, 50,000 miles on complete major on motor, more recent major on rears. 717-682-3709.

1969 Dodge D400 18' flatbed with 8' platform over cab, will haul 275 hay bales, 318 V-8, good cond., \$1200.

1971 International 1600 grain body w/hoist, 72 inch sides, attachment for plow, 44,000 original mile, very good cond., \$3200. 301-725-8948 eve./weekends, 301-921-3215 days.

1977 Chevrolet C65, 350 engine, 5 sp. trans., 2 sp. axle, 8 ton bulk feed tank w/auger unloading. 219-491-2415.

For Sale - 1975 Dodge cattle truck, will sell truck or bed separate, \$1,600 for both. 717-535-5457.

1975 Chevrolet C65, 350 engine, 5 sp. trans., 2 sp. axle, 9 ton bulk feed tank w/auger unloading. 219-491-2415.

1974 Fruehauf hopper trailer, 40' long, excellent for corn and grain. \$7500 215-493-3040.

1975 F600 Ford Truck, 26,000 GVW, 5 speed-2 speed, 16' dump stake body, excell. cond. \$9000 or best offer. Lacka. Co. 717-587-1271.

1979 Chevy C10 Diesel, automatic, p.s., p.b., dual tanks, runs good, clean body. \$3995. 1972 travelall, automatic, p.s., air, new trans., \$750. Dealer 717-733-0690

For Sale - 13 speed cabover IHC tandem truck tractor, good condition, reasonable price, new paint, good tires, will consider trade for tandem dump trailer, between 7 and 5 717-546-5981

For Sale - 2 late model 12,000 lb. front truck axles with air brakes and spoke wheels. 717-733-8528

1963 GMC truck, 18' bed with roof, very good condition. 717-665-4743

John Deere 440A Log Skidder \$5500.00, 1970 IHC 2010 Tandem Log Bunks, and Prentice G Loader \$9500.00, 1971 Ford F 700 with Log Bunks, and John Deere 3415 Log Loader \$6976.00, Others, Trade, 814-793-2829. Curry Supply

Steel flatbed truck body for 20' duals, has storage compartments underside, two wheel utility trailer. 717-374-0492

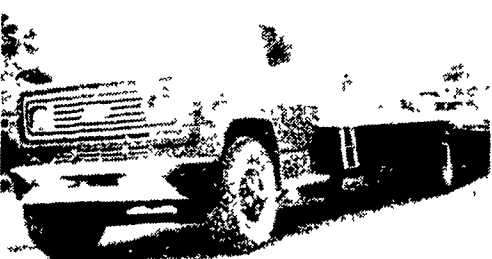
Wanted - good long tandem dump trailer. Phone your offer to 717-546-5981

TRUCKS & TRAILERS

1981 D150 pickup 6 cyl. 4 speed overdrive, 1 owner 6,000 miles.
1979 B100 sportsmen 5 passenger. 1 owner, real nice
1977 D150 Cub cab pickup 8' bed.
1978 Ford courier pickup with cab

PETTICOFFER DODGE, INC.

Route 230 East Next to Shopping Center
Elizabethtown, PA
PHONE: 717-367-1808

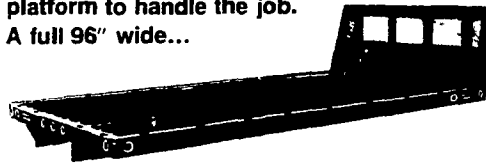


1976 GMC 6500
with 26 ft. Jeri Dan Roll back, New 10 20 tires \$12,500.

CURRY SUPPLY
Curryville, PA
814-793-2829

Performance Proven Platforms

Whatever your hauling requirements, Omaha Standard has the platform to handle the job. A full 96" wide...



STANDARD heavy-duty platforms
The platform that set the standard for the industry. For bodies 9'6" and longer, a full 96" wide. Wood, smooth steel, treadplate steel or steel over wood flooring

METRO medium-duty platforms
A rugged yet economical platform. Ideal for rental and leasing operations. Floor options include wood, smooth steel or treadplate steel. 96" wide for bodies 9'6" and longer

SUPER DUTY platforms
The extra tough platform with structural steel construction throughout and 3/8" thick banding rail on both sides and rear. Standard lengths from 12'6" to 24'6" long and a full 96" wide. Other lengths built to order. Floor options include 2" edge grain laminated wood, smooth steel, treadplate steel, smooth or treadplate steel over wood.

"COMPAK" platforms
For economy size pickups Available in four sizes: 7' or 7'6" long x 72" wide and 7' or 7'6" long x 78" wide for dual tire trucks. Wood or steel floors.

Options for all platforms include bulkheads, stake racks and tool boxes.

FARMERSVILLE EQUIPMENT INC.

RD 4, East Farmersville Road
Ephrata, PA 17522
Located in the Village of Farmersville,
Lancaster County
717-354-4271

Omaha Standard

Hostetler Truck Bodies & Trailers

Rt. 322, Milroy, Pa. 17063

717-667-3921



Livestock Trailers
Grain & Dump Trailers
Flatbed Trailers

Grain & Livestock Bodies
Stake & Contractor Bodies
Utility or Service Bodies

STEEL and ALUMINUM
Knapheide - Moritz - Hillsboro - Feather-lite

TRUCKS & TRAILERS

TRUCKS & TRAILERS

TRUCKS & TRAILERS

TRUCKS & TRAILERS

PICK UPS

- 1981 Chevy C10, 6 Cyl., Auto., PS, PB, Air Cond., 14,000 Miles. \$7495
- 1980 Chevy C10 Custom, 260 6 Cyl., 3 Speed, AM Radio, 20,000 Miles. \$5995
- 1980 Chevy C10 Custom, 6 Cyl., 3 Speed, PS, AM-FM & Cassette, 36,000 Miles. \$5995
- 1979 Ford F150, 6 Cyl., 4 Speed Overdrive, PS, PB, AM Radio, 38,000 Miles, Cap w/Insert. \$5995
- 1979 Ford F100 Custom, 351 V8, Auto., PS, PB, Air Cond., AM Radio, Dual Tanks, 28,000 Miles. \$5995
- 1979 Ford F250, V8, Auto., PS, PB, AM Radio. \$5295
- 1978 Ford Ranger XLT, 351 V8, Auto., PS, PB Air Cond., AM-FM & 8-Track Tape, 2 Tone Paint, White Spoke Wheels, Very Clean. \$5995
- 1978 Chevy C20, with Reading Utility Body, 292 6 Cyl., Auto., PB, New Paint. \$4895
- 1977 Chevy C10 Silverado, 350 V8, Auto., PS, PB, Power Windows & Locks, Cruise Control, Tilt Wheel, AM-FM, Dual Tanks, Sliding Rear Window, 2 Tone Paint. \$4995
- 1977 Int. Scout, 2 Wheel Drive, 304 V8, Auto., PS, PB, AM Radio, Very Clean, Only 30,000 Miles. \$3995
- 1976 Chevy C10, Shortbed, 350 V8, Stick Shift, PB, AM-FM, White Spoke Wheels. \$3495
- 1980 Chev. C-30 Bonanza, Camper Special, 350 V8 auto., PS, PB, air cond., dual tanks, 9000 GVW, cap, 2 tone paint, only 14,000 miles. \$8995
- 1979 Chev. C-20 Cheyenne, Trailer Special 454 V8, auto., PS, PB, air, tilt wheel, dual tanks, AM-FM, 8200 GVW, 34,000 miles. \$7495
- 1979 Chev. C-20 Silverado, Trailer Special 454 V8, auto, PS, PB, tilt wheel, AM-FM stereo, 28,000 miles, all black with red velour interior and chrome spoke wheels. \$7495
- 1976 Chevy, C10 shortbed, 350 V8, 3spd. stand., PB AM-FM, black w. white spoke wheels. \$3495

Many More Pickups To Choose From

VANS

- 1979 Dodge B200 Panel Van 318 V8, auto, PS, PB, AM radio. \$5495
- 1981 Ford E100 Econoline, 6 Cyl., Auto., PS, PB, AM Radio, Dual Tanks. \$6895
- 1979 Ford E150 Econoline, 351 V8, 3 Speed Standard, PS, PB, AM Radio, 45,000 Miles. \$4995
- 1979 Chevy 3/4 Ton, 350 V8, Auto, PS, PB, AM Radio, 2 Tone Paint, 35,000 Miles. \$5495
- 1979 Ford E250 12 Pass. Club Wagon, 351 V8, Auto., PS, PB, AM Radio, 26,000 Miles. \$6995
- 1978 Ford Coachman Motor Home, 351 V8, Auto., PS, PB, AM-FM Radio, 4 Captain's Chairs, 2 Tables, Couch, Elec. Refrig., 41,000 Miles. \$7995
- 1979 Ford Club Wagon, 5 pass., trailer special 351 V8, auto, PS, PB, air, cruise control, AM-FM. \$7495

4 WHEEL DRIVES

- 1981 Chevy C30 Silverado Dual Wheel Crew Cab Camper Special, 454 V8, Auto., PS, PB, Air Cond., Dual Tanks, Tilt Wheel, Cruise Control, AM-FM, Lockout Hubs, 10,000 GVW, All Black w/Cap, 1-of-a-kind. \$16,900
- 1981 Ford F250 Ranger, 302 V8, Auto, PS, PB, Power Windows, Tilt Steering, Sun Roof, AM-FM Cassette Tape, Dual Tanks, Fiberglass Cap & Camper insert, 2 Tone Red & White w/White Spoke Wheels, Like New. \$10,900
- 1980 Chevy Scottsdale, short bed, 350 V8, auto., PS, PB, lockout hubs, rally wheels, 2 tone paint, Myers power angle plow, 14,000 miles. \$8995
- 1980 Ford Bronco, 6 Cyl., 4 Speed, PS, PB, Radio, Lockout Hubs. \$8995
- 1979 Ford F250, 351 V8, 4 Speed, PS, PB, AM-FM & Tape, White Spoke Wheels w/New Radial All-Terrain Tires, 30,000 Miles, 1 owner Truck. \$7495
- 1979 Chevy Blazer Cheyenne, 350 V8, 4 Speed, PS, PB, Air Cond., Tilt Wheel, Power Windows & Locks, Posi-Rear, AM-FM-Stereo & CB, Lockout Hubs, 31 Gal. Tank, Dark Brown-Metallic & White. \$8995
- 1979 Ford Bronco Custom, 351 V8, Auto., PS, PB, Air Cond., AM Radio, 34,000 Miles, 2 Tone Red & White. \$8295
- 1979 Ford 150 Custom, 351 V8, Auto., PS, PB, Air Cond., AM Radio, 35,000 Miles. \$6995
- 1979 Subaru Brat, 4 Cyl., 4 Speed, AM-FM, Rally Wheels, 1 Owner. \$4895
- 1979 Ford Bronco Ranger XLT, 351 V8, Auto., PS, PB, Air Cond., AM-FM Stereo, 2 Tone Maroon & Black w/White Roof. \$8495
- 1979 Dodge W150 Pickup, 360 V8, Auto., PS, PB, AM Radio, Cap, Very Clean. \$6495
- 1979 Chevy 3/4 ton custom, 350 V8, 4 spd, PS, PB, AM-FM, Casette, 37,000 Miles. \$6495
- 1975 Chevy K10 Custom, 350 V8, auto, PS, PB, Air Cond., AM-FM, tape, 39,000 miles. \$5295
- 1975 GMC 3/4 ton 350, Auto, PS, PB, Air cond., AM-FM. \$3995
- 1974 Jeep CJ5 Renegade, 304 V8, 3 Speed, Only 44,000 Miles, Alum. Slot Wheels. \$3995
- 1979 Dodge Ramcharger, 318 V8, auto., PS, PB, AM-FM. \$6495
- 1979 Chev. Blazer, 350 V8, auto., PS, PB, air cond., AM radio, rust-proofed, 2 tone paint. \$8495
- 1970 Ford Bronco, 6 cyl., stick. \$1995

DUMP TRUCKS

- 1977 Chevy C20, Single Wheels, 350 V8, Auto., PS, PB, w/Lift. Installed On Bed. \$5395

MIKE RHODES & CO.

"THE TRUCK PEOPLE"

Rt. 663 & Swamp Pike, Gilbertsville, Pa.

Area Code 717 or 215 Call Toll Free
1-800-362-7655
or 215-327-1380