

# THE OLD FARMER'S ALMANAC

AUG. 30-SEPT. 5, 1982

Too cool for the pool.  
First apples can be picked now... "Hot Line" to Moscow opened Aug. 30, 1963... Full moon Sept. 3 (Fri)... Average length of days for the week, 13 hours, 7 minutes... Oysters in season now... First pro football game played Aug. 31, 1895... All that is necessary for the triumph of evil is for good men to do nothing.

Ask the Old Farmer: In an old diary I learned that I had a great uncle who made extra money making strap-tubs. Do you know what they are? T.V., Boston.  
Half a barrel, with rope "beckets" — or handles — one on each side to lift it by. Fishermen made them.  
Home Hint: If you are painting anything high with a brush, slip a paper plate onto the handle to catch drips

**OLD FARMER'S WEATHER FORECAST**  
New England: Week begins with warm temperatures, showers, heavy south; turning cool, with rain south, midweek; sunny weekend.  
Greater New York-New Jersey: Cloudy skies, warm temperatures to start; midweek is cloudy and cool, rainy; sunny, pleasant weekend.  
Middle Atlantic Coastal: To begin week, turning cooler, thunder-showers; then cloudy and cool, with showers; weekend is warm, cloudy.

(All Rights Reserved, Yankee Publishing Incorporated, Dublin, NH 03444)

## Carlisle Auction

Carlisle, Pa.

Tuesday, Aug. 24

Report supplied by auction

**CATTLE:** Steers were .50-cents higher; Heifers were 5.00 to 6.00 higher; Cows were steady to .25 cents lower. Strong demand with active bidding for Early Bird Fen Cows! Steers: Choice 65.75-66.50, Good 58.50-58.75, Standard to 54.25. Heifers: No Choice offered. Good 55.75-57.75, Standard 47.75-52.00, Utility to 42.25. Cows: Early Bird Fen 3.00 higher! Utility & Commercial 40.00-43.85, Cutter 37.00-39.75, Canner & Low Cutter 35.75-37.00, Shells to 32.85. Bullocks: No Choice offered. Good 50.50-58.00. Bulls: Yield Grade No. 1 to 56.00. Yield Grade No. 2 to 45.75.

**FEEDER CATTLE:** Light Run of Steers; Heifers were 5.00 higher; Bulls were steady. Steers: Medium 250-285 lbs. 46.00-55.00. Heifers: Good 235-315 lbs. 55.00-57.00, Medium 652-740 lbs. 50.00-51.00. Bulls: Good 345-375 lbs. 59.00-60.00, Good 420-440 lbs. 57.00-58.00, Medium 615-675 lbs. 46.00-54.00.

**CALVES:** Strong Demand! Prices 11.00 higher for Vealers. Large run of calves, Farm Calves were 10.00 higher for Hol. Bulls and steady to 4.00 lower for Hol. heifers. Vealers: Choice 90.00-101.00, Good 70.00-89.00, Standard & Good 60.00-72.50, Standard & Good to 65.00. Back to Farm: Hol. Bulls 80.00-90.00. Hol. Heifers 80.00-94.00.

**HOGS:** Very active; Large run

with very strong demand! Prices 1.25 higher! US No. 1-2 66.25-67.75; US No. 1-3 64.00-66.00; US No. 2-3 62.00-65.00. Sows: 2.00 lower; US No. 1-3 50.50-53.50; No. 2-3 46.00-49.50. Boars: 1.25 lower, 45.75-48.00.

**FEEDER FIGS:** US No. 1-3 18-30 lbs. 29.00-40.00 Hd.; No. 1-3 42-50 lbs. 50.00-57.00 Hd.; No. 1-3 55-61 lbs. 40.00-57.00 Hd.

**SHEEF:** Lambs: Good 54.00-57.00, Utility to 53.00. Goats: 18.00-35.00 Hd.

## New Holland Dairy

New Holland, Pa.

Wednesday, August 25

Report supplied by auction

Reported receipts of 104 cows, 85 heifers, and 2 bulls. Market steady. Load of Wisc. fresh cows, 630.00-1600; Load of N.Y. fresh cows, 1075.00-1475.00 springers, 1075.00-1500.00; Load of Fa. fresh cows, 975.00-1550.00; Load of Fa. fresh cows, 810.00-1100.00; Load of Fa. fresh cows, 1150.00-1500.00; Load of Fa. fresh cows, 930.00-1200.00; Load of Canadian fresh cows, 1025.00-1100.00 springers, 985.00-1600.

Herd of 25 head, all stages, 490.00-960.00.

Locally consigned cows 450.00-1300.00.

Springing heifers 750.00-1090.00; Furebreds 950.00-1310.00.

Open Heifers 340.00-5350.00. Bulls 330.00-630.00.

# Livestock market and auction news

## Peoria Cattle

Thursday, August 26

Report supplied by USDA

Compared to last week Slaughter Steers closed the week 1.50 to 2.00 lower. Heifers .50-1.00 lower. Cows finished 1.00 to mostly 2.00 lower. Bulls remained steady. Trade during the week slow on Steers moderate to slow on Heifers. Slaughter Cattle closed the week under pressure as a weak to lower carcass and boxed beef market developed. Majority of receipts Good and Choice Steer and Heifers with several loads returning to feedlots. Receipts this week about 2800 compared to 2240 last week and 3230 a year ago.

**SLAUGHTER STEERS:** Choice 2-4 1050-1250 lbs. 63.00-65.00, Mostly 63.00-64.00 late. Around 3 loads 1100-1200 lbs. 65.50-65.75 Monday. 950-1050 lbs. 62.00-63.00. Good and Choice 2-3 950-1100 lbs. late 61.00-63.00. Good 60.00-61.50.

**SLAUGHTER HEIFERS:** Two part loads Choice, few Prime 2-4 1125-1225 lbs. 64.00-64.50. Choice 2-4 900-1100 lbs. 62.00-64.00. Late mostly 62.00-63.00. 825-925 lbs. 58.00-62.00. Good and Choice 2-3 850-1000 lbs. 60.00-62.00. Good 57.00-61.00.

**COWS:** Utility 1-2 late 39.00-44.00, cutter 36.00-39.00. Canner and low Cutter 32.00-37.00.

**BULLS:** YG 1-2 1100-1500 lbs. 48.00-54.00.

## Penns Valley Livestock

Centre Hall, Pa.

Tuesday, Aug. 24

Report supplied by auction

Beef Cows: Utility and Commercial 42.50-48.60; Cutters 37.60-40.50; Canners 32.50-36.95; Shells 30.75.

Heifers: Good 58.25-61.75; Standard 50.20-55.10; Commercial 38.50-42.60.

Steers: Choice 58.50-60.50; Good 52.60-55.10; Standard 41.10-44.25.

Bulls: Good 54.25-59.00; Standard 46.00-51.00.

Feeder Cattle: 300-500 lbs. large frame 46.10-52.50; 300-500 small frame 39.25-42.10; 500-700 lbs. large frame 41.10-44.60; 500-700 lbs. small frame 40.10-42.60.

Veal Calves: Frim 81.60-86.10; Choice 72.20-79.75; Good 60.25-68.50; Standard 48.20-59.10; Utility 41.60-46.10.

Farm Calves: Bulls 78.20-89.10; Heifers 76.20-81.20.

Hogs: 61.25-66.75.

Sows: 54.50-59.25.

Boars: 41.00-47.00.

## New Holland Horse

New Holland, Pa.

Monday, August 23

Report supplied by auction

Reported receipts of 263 head of horses, mules, and ponies. Market: steady.

Local better horses 550.00-800.00; Driving horses 375.00-1300.00; Riding horses 350.00-475.00; Lightweight killers 290.00-425.00; Heavyweight killers 475.00-575.00; Mare Fones 35.00-125.00; Fony Colts 15.00-35.00; Geldings 35.00-125.00; Larger ponies 150.00-250.00.

## Belleville Livestock

Belleville, PA

Thursday, Aug. 25

Report supplied by auction

**CATTLE 102:** Utility & Commercial slaughter cows 40.75-45.85, Cutters 38.75-41.00, Canner & Low Cutter 35.00-38.50, Shells down to 22.75. Yield Grade #1 940-1830 lbs. slaughter bulls 50.25-55.35; yield grade #2 755-1205 lbs. 41.85-48.10.

**CALVES 157:** Good vealers 62.00-75.00, Standard & Good 70-100 lbs. 43.00-55.00, Utility 40.00-45.00. Farm calves, holstein bulls 90-120 lbs. 60.00-85.00; holstein heifers 70.00-85.00.

**HOGS 192:** US No. 1-2 210-240 lbs. barrows & gilts 65.25-66.60, No. 1-3 200-265 lbs. 63.75-66.00. US No. 1-3 300-650 lbs. sows 49.00-58.00. Boars 40.00-49.25.

**FEEDER FIGS 329:** US No. 1-3 20-40 lbs. feeder pigs 44.50-56.00 per head, No. 1-3 40-60 lbs. 56.60-64.00 per head.

**SHEEF 25:** Good spring slaughter lambs 46.00-51.00, Utility 34.00-42.00. Slaughter ewes 11.50-21.00.

**GOATS 20:** 10.00-43.00 per head. Holstein dairy cows \$520-\$1290 per head.

## NEW HOLLAND SALES STABLES, Inc.

12 Miles East of Lancaster on Route 23, New Holland, Penna.

WEEKLY FEEDER PIG SALE EVERY WEDNESDAY



Sale to Start at 1:30 P.M.

We Will Receive Your Pigs Anytime From 7 A.M. Wed. Morning

State Graded Until 12 Noon.

All pigs inspected by State Approved Veterinarian.

State tags available at our office for you to tag pigs at home to save 25 cents tagging charge.

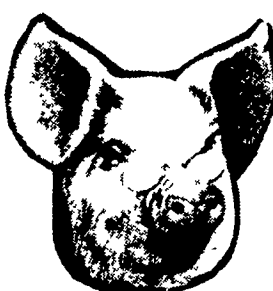
Tags delivered if you call 717-354-4341 our office in advance.

Calf Sale To Be Held Every Thursday At 3:30 P.M.

NORMAN KOLB 717-397-5538

ABE DIFFENBACH 717-393-4464

## PRODUCE PORK FOR PROFIT 1982



We have a special program for a limited number of HOG FINISHING UNITS Financing, Supervision and Marketing



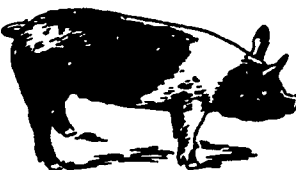
CENTRAL SOYA

More to Gain

Call and arrange for appointment to see if you qualify.

717-872-5646

Thomas Farm Supplies



EMERY'S BUYING STATION

OPEN TO RECEIVE YOUR MARKET HOGS

AT THE GREEN DRAGON MARKET RD 4, EPHRATA, PA 17522 1 MILE NORTH OF EPHRATA ON NORTH STATE STREET.

HOURS MONDAY, TUESDAY, and WEDNESDAY 6:00 A.M. to 11:30 A.M.

215-458-5677 Residence 717-733-9648 Office

YOU ARE PAID FOR YOUR HOGS IMMEDIATELY

Ken & Lois Emery, Proprietors

## Porkland Industries, Inc.



Attention: HOG PRODUCERS

WHY GET LESS MONEY - SHIP YOUR HOGS DIRECT TO PACKER

- Your hogs will be weighed and paid for immediately at market prices.
- No commission or yardage deducted from check.
- Receiving hogs from 5 AM - 12 Noon.
- Call (717) 393-0416 for the price of hogs each day.

Ship Hogs To:

E.W. MARTIN CO.

Division of PORKLAND INDUSTRIES, INC. 1625 Old Philadelphia Pk. Lancaster, PA 17602

Now is the time to use the "magic" gallon. What does it do? How does it work? It really isn't magic?

It is the most economical crude protein source available for cattle.

It will increase the true protein of the corn silage up to 50%.

It will increase stability of corn silage after exposure to air (preservative.)

It is **U.S.S.** Cold-Flo - Ammonia for a cost of less than \$1.75 per ton of silage.

It will make you money - CALL US

Heisey Farm Service R-2 Mt. Joy, PA 717-653-1568

Little Britain Agri-Supply R-2 Quarryville, PA 717-529-2260