

Poultry Markets

Nest Run Eggs

Prices are from Egg Clearinghouse, Inc., (ECI) Durham, N.H. and reflect trading prices for gradable nest run eggs (GNR) on ECI, a nationwide trading center for producers, packers and marketers. GNR eggs are classified by weight in 30-dozen cases, and traded in lots of either 300 or 750 cases. Prices are FOB buyers dock, and are computed Tuesday and Thursday of each week. This week's prices for each classification were:

Classification	Net Weight Per Case	Aug. 24 Tuesday	Aug. 26 Thursday
Class 1 - Large	48 lbs.	58	59
Class 2 - Large	45 lbs.	51	51
Class 3 - Medium	42 lbs.	47	48
Class 4 - Small	39 lbs.	35	35
Breaking Stock	48 lbs.	46	46
Checks	48 lbs.	41	41

Philadelphia Eggs

Thursday, Aug. 26
Report supplied by USDA
MARKET COMMENT: Cartoned egg movement fair. Most dealers content with current orders. Extra large have moved into adequate position as orders have lessened somewhat and supplies increased. Graded large and medium adequate to fully adequate with additional stock fairly easy to obtain. Ungraded held with confidence but some spot loads showing up for immediate delivery. Undertone steady.
A Extra Large 67-74; A Large 65-69; A Medium 52½-58.

New York Multiple Drop Broiler Report

Thursday, Aug. 26
Report supplied by USDA
Current broiler/fryer negotiated prices for immediate delivery includes mostly multiple-drop shipments to New York City from Delmarva.
RANGE: U.S. Grade A 45-49, 2,035 boxes; Branded U.S. Grade A 47½-50, 11,604 boxes.
WTD. AVG.: U.S. Grade A 47.30; Branded 49.73.

Eastern Pa. & N.J. Poultry

Thursday, Aug. 26
Report supplied by USDA
Market Comment: Prices generally unchanged. Seller offerings irregular but generally sufficient for processor needs. Canner pack movement slightly improved but still no better than fair.
Light Type Hens: prices paid at farm 4-6, mostly 5-6. F.O.B. plant: 8. Heavy Type Hens: TFTR.

Heinsey's Poultry Market

Root's, East Petersburg
Tuesday, Aug. 24
Report supplied by auction
MUSCOVY DUCKS, DRAKES: range 1.10-1.30 per lb.
MUSCOVY DUCKS, HENS: range 1.00-1.14 per lb.
FEKING DUCKS: range .42-.54 per lb.
FULETS: 6-9 lbs. range .38-.52 per lb.
RED FOWL: 4-5 lbs. range .15-.24 per lb.
RED FOWL: 5-7 lbs. range .26-.42 per lb.
CROSSBRED FOWL: 5-9 lbs. range .30-.44 per lb.
CROSSBRED ROOSTERS: 4-6 lbs. range .40-.62 per lb.
CROSSBRED ROOSTERS: 7-12 lbs. range .25-.52 per lb.
GUINEA FOWL: range 1.76-1.92 per lb.
BANTY ROOSTERS: range 2.50-4.00 ea.
BANTY HENS: range .25-1.25 ea.
LEGHORN ROOSTERS: range .17-.30 per lb.
GEESE: 9-11 lbs. range .30-.48 per lb.
FIGEONS: range .85-1.10 ea.
WHITE FIGEONS: range 1.00-1.75 ea.
RABBITS: 4-6 lbs. range .26-.48 per lb.
RABBITS: 7-10 lbs. range .20-.34 per lb.
GUINEA FIGS: range .15-.50 ea.
GOATS 35 head: range 22.00-44.00 ea.
KID GOATS: range 15.00-36.00 ea.
TOTAL AMOUNT COUFS: 864.

Delmarva Poultry

Thursday, Aug. 26
Report supplied by USDA
MARKET COMMENT: RTC movement on whole birds overall fairly good and satisfactory clearances are noted but instances of discounting needed. Parts movement slightly improved but overall supply remains more than sufficient for current buying interest. Slaughter schedules heavy and live supplies fully adequate. Weights desirable but trending toward heavy. Undertone steady.
Today's L.T.L. asking prices are higher on U.S. Grade A at 49-52 cents.
Estimated slaughter of broiler fryers in Delmarva (000). Estimated 8/26 1,859; Actual 8/19 1,840; Actual 8/24 1,804; Average Weights 8/24 4.33; 8/17 4.28.

Weekly New York Egg Market

	From Friday, Aug. 20 to Aug. 27				
	Fri.	Mon.	Tues.	Wed.	Thurs.
WHITE					
Jumbo	82	82	83	83	83
Ex Large	74	74	75	75	75
Large	70	70	71	71	71
Mediums	60	68	61	61	61
Pullets	44	44	44	44	44
BROWN					
Jumbo	-	-	-	-	-
Ex Large	89	89	90	90	90
Large	84	84	85	85	85
Mediums	62	62	63	63	63
Pullets					
Peewees	Unquoted				
Off Grade					
Large	60	60	61	61	61
Checks	33	33	34	35	35

BREAKING STOCK: Prices for breaking stock per case in the Northeast for the same period include: Friday — 12.00 - 12.60; Monday — 12.00 - 12.60; Tuesday — 12.60 - 13.20; Wednesday — (52-54 Lb.) 12.60 - 13.50; Thursday — 12.60 - 13.50.

Copyright 1982 by Urner-Barry

N. E. Weekly Shell Egg Report

Tuesday, Aug. 24
Report supplied by USDA
Prices paid per dozen Grade "A" Brown eggs in cartons delivered to retail stores:

	Ex. Large	Large	Medium	Sm all
MASS.X	91-97	85-91	68-74	45-52
Mostly	93-95	87-89	70-72	47-50
N. HAMP.	86-92	80-86	62-69	40-46
Mostly	88-91	82-85	65-68	42-45
R.I.	93-94	87-88	70-71	48-49
VERMONT	93-1.00	82-95	70-78	-
Mostly	95-97	89-91	72-73	-
MAINE	92-94	86-88	69-71	47-48

X Includes Central and Western Sections only.

Copyright 1982 by Lancaster Farming
P.O. Box 366 - Lititz, PA 17543
Office: 22 E. Main St., Lititz, PA 17543
Record-Express Office Building
Phone: Lancaster 717-394-3047
or Lititz 717-626-1164

Robert G. Campbell, Publisher
Sheila M. Miller, Editor
Dick Anglestein, Staff Writer
Debra L. Koontz, Home Editor
Donna M. Tommelleo, Staff Writer

CORRESPONDENTS
Ginger Secrist Myers, Adams County
Littlestown 717-359-7542

Patty Gross, Bedford, Blair, Huntingdon counties
Martinsburg 814-793-4256

Jane Bresee, Bradford County
Ulster 717-358-3346

Beth Hemminger, Cumberland County, Franklin
and Perry counties
Newville 717-486-5322

Sally B. Bair, Lancaster County
Columbia 717-285-4926

Joyce Bupp, York County
Seven Valleys

Subscription Price
\$7 50 per year; \$13 00 - 2 years
\$14 00 per year outside of
PA NJ MD DE NY VA & WV

Established November 4 1955
Published every Saturday
by Lancaster Farming Lititz PA
Second Class Postage paid at
Lititz PA 17543 USPS 304 040

For address change form or new
subscription see Mailbox Markets
Members of Newspaper Farm Editors Assn.,
Pa. Newspaper Publishers Association,
and National Newspaper Association.



ATTENTION FARMERS

EVERY MONDAY
HATFIELD PACKING CO. and
BAUMS MEAT PACKING
Will Receive Your
Hogs and Cattle at the
DANVILLE LIVESTOCK MARKET
RD4, Danville, PA

- We will receive your hogs from 8 AM to 12 Noon every Monday. Your hogs will be weighed and paid for immediately.
- We will also accept your sows & boars.
- Your cattle will be received from 12 Noon to 4 PM. We will either pay for your cattle immediately or you may sell them dressed weight.
- There will not be a commission or yardage fee deducted from your check.
- You may call our office Monday morning and we will be able to tell you the base price for hogs for the day.
- Please come and give us a chance to continue doing business with you through this method.

FOR INFORMATION CALL
717-275-2880



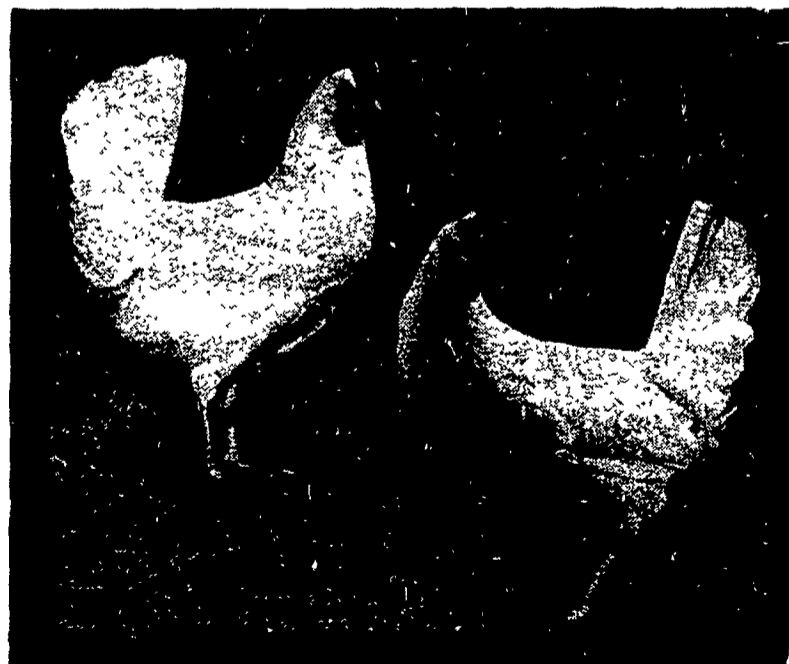
Two Ways To Improve Your Profit Picture XL & DK

Two layers with distinctly different characteristics... From two separate research programs.

You don't have to buy from two different companies to get the two top layers on the market.

The XL shows excellent production under many management conditions. The DK responds best to finely tuned, close management.

DEKALB Layers are bred to possess the economic traits most applicable to your operation. You do have a choice... The high productivity XL or the high efficiency DK.



CONTACT:

Moyer's CHICKS, INC.

DEKALB
BROWN & WHITE
EGG LAYERS

Quakertown, PA 18951
(215) 536-3155

HUBBARD
WHITE MT.
BROILERS