

IT PAYS TO STAY WITH THE TRACTOR SPECIALISTS!

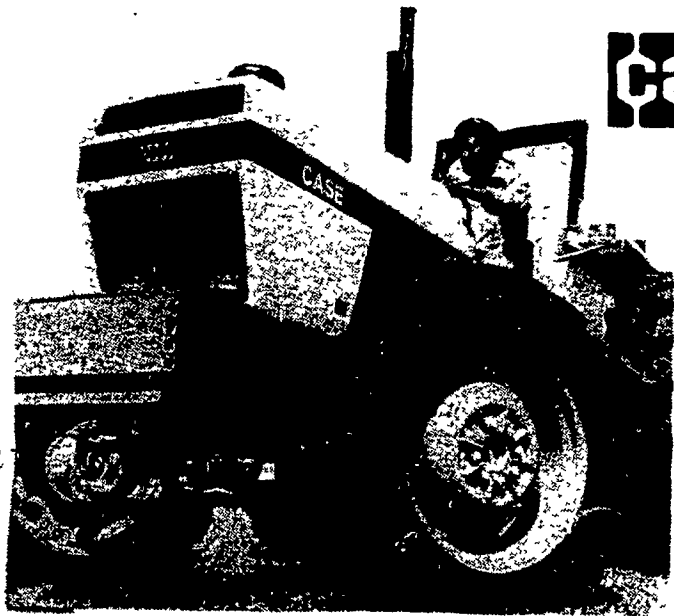


Case Pioneered The Way...

The Original Manufacturer Of The Steam Traction Engines

To Today's Leader In The Field!

THE FUEL SAVING TRACTION MAKERS ARE HERE!



MFD optional on 1290, 1390, 1490 & 1690 tractors



Trade That Slippery 2 Wheel Drive Now!

(MFD)

Mechanical Front Wheel Drive Option

The fuel saving option so many farmers would never be without.



MFD optional on 2090 & 2290 tractors

THEY OFFER THIS VERY IMPORTANT FEATURE:

DID YOU KNOW?

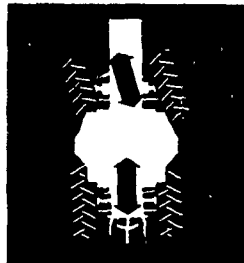


Is The Only

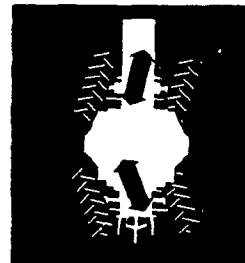
AGRICULTURAL 4 Wheel Drive

Tractor Designed For Row Cropping.

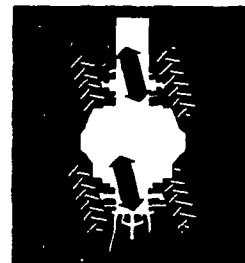
Why? Because CASE Doesn't Bend In The Middle Like Others.



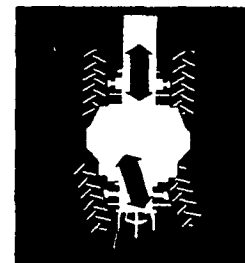
FRONT WHEEL ONLY. Automotive-style control. Ideal for row crops, most field work and for highway travel.



4-WHEEL COORDINATED. Rear wheels and front wheels are electronically coordinated for sharp, full power turning.



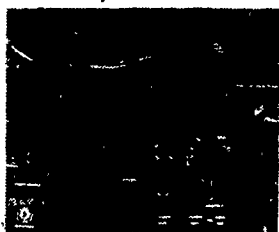
4-WHEEL CRAB STEERING. Crab steering counteracts implement drift on sidehills. Controls implement overlap. Makes four tracks (right with duals) for maximum traction. Hitch follows rear wheels for outstanding maneuverability.



REAR WHEEL ONLY. Rear wheel steering with electronic rocker switch "fine-tuning" makes implement hook ups much easier. Great for maneuvering around yards and buildings.

Save time with 12-speed Case range power shift

Save time in the field with three on-the-go power shifts in each of four ranges. It means you can shift down and then



shift down again without clutching...to keep moving through tough spots, soft spots, uphill, at headlands, over waterways — or for positive hold-back (no free wheeling) with heavy loads on down grades.

Save time on the road. You can start a heavy load rolling in fourth range at 9.5 mph (15.3 km/h), power shift up to 12.7 mph (20.5 km/h), then shift up again to 17.4 mph (28.0 km/h) all without clutching.

Power shift is smooth because it "swaps" only one of two engaged clutches — simultaneously. As pressure drops off in one clutch, it builds up in the other for a smooth

exchange, all in less than one-fifth of a second.

If you haven't driven Case power shift, do it soon with a new 4490. See how easy and efficient big tractor speed control can be with Case range power shift.

With Case power shift, you choose the gear range that's right for the job, then power shift up or down within range to maintain optimum operating speed. Because you can instantly match speed to

12 useful speeds wide choice in the tillage range (23.1 - 36.7 mph)

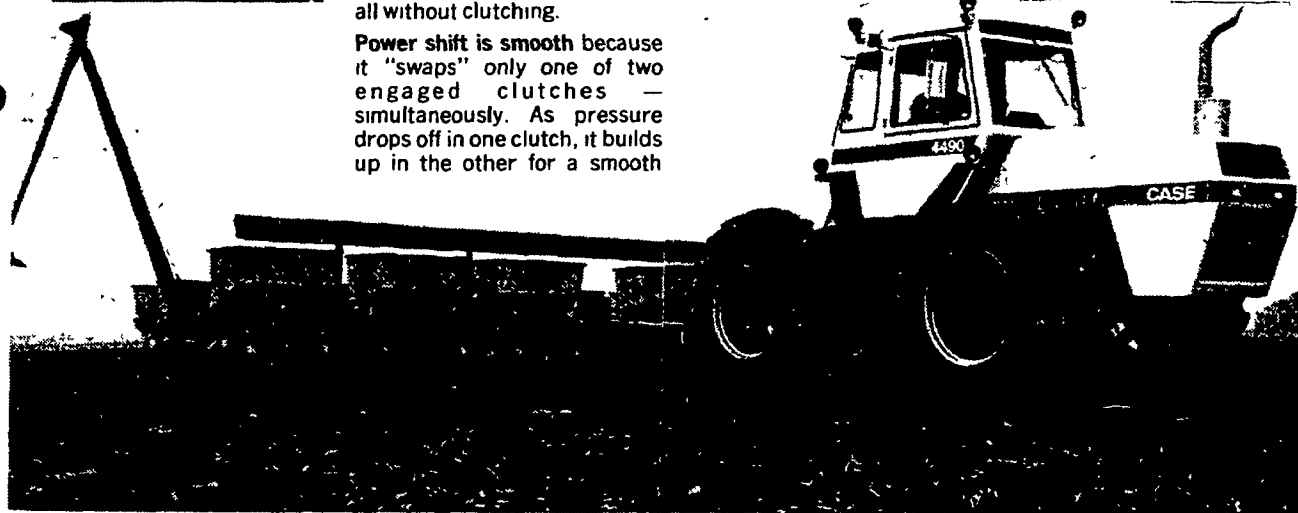
RANGE	POWER SHIFT	MPH	DESCRIPTION
1	1	9.5	PTO WORK
1	2	12.7	
1	3	15.3	
1	4	17.4	
2	1	12.7	FIELD WORK
2	2	15.3	
2	3	17.4	
2	4	19.5	
3	1	15.3	FIELD WORK
3	2	17.4	
3	3	19.5	
3	4	21.6	
4	1	17.4	TRANSPORT
4	2	19.5	
4	3	21.6	
4	4	23.7	

changing soil and field conditions, you can work extra acres every hour. Notice, the 4490 offers an ideal speed selection in the tillage range.

ONLY CASE HAS 4-WAY SOLID STATE SELECTIVE STEERING

amazing electronic sensing and fingertip command

As easily as you'd operate a light switch, you can switch steering on-the-go from front to coordinated to crab steering. When you switch back to front wheel steering, rear wheels center automatically. It's an advantage you'll enjoy every time you drive the 4490.



REMEMBER

These are the most advanced design 4-wheel drive tractors CASE ever built. Let us arrange a test drive.

See Your Local Case Specialist For The Total Program

TUCKER EQUIP. CO.
629 S. Phila. Blvd.
Aberdeen, MD 21001
(301) 272-1770

STOFFER BROS., INC.
1066 Lincoln Way West
Chambersburg, PA
(717) 263-8424

A. L. HERR & BRO.
312 Park Ave.
Quarryville, PA
(717) 786-3521

ZIMMERMAN'S FARM SERVICE
Bethel, PA
(717) 933-4114

PAUL SHOVER'S, INC.
35 East Willow St.
Carlisle, PA
(717) 243-2686
Loysville, Pa.
(717) 789-3117



CASE POWER & EQUIP.
Montgomeryville, PA
(215) 699-5871
New Castle, DE
(302) 652-3028

C. H. WALTZ SONS, INC.
RD1, Cogan Station, PA
(717) 435-2921

PEOPLES SALES & SERVICE
Oakland Mills, PA
(717) 463-2735

E. W. BILEWICZ EQUIP., INC.
Elmer Rd., Richwood, NJ
(609) 881-2692

BINKLEY & HURST BROS.
133 Rothsville Station Rd.
Lititz, PA
(717) 626-4705

C. & P. FULTZ EQUIP.
RD 1, Spring Mills, PA
(814) 422-8805