

Refuse boiler to be demonstrated

NEW HOLLAND — Alternative Energy Systems of New Holland announces a new addition to their line of Solar and Solid Fuel Heating equipment.

Developed and manufactured by Eshland Enterprises, the new RDF or Refuse Derived Fuel Boilers are capable of burning a wide variety of cellulose base materials such as paper, cardboard, wood waste and pallets. These units, rated at 500,000 to 3,000,000 BTU output, adapt easily to existing heating systems so that the present boiler or hot water heater functions as an automatic back-up in the event that waste material is temporarily unavailable.

In many cases boiler and installation costs may be recovered in 12 to 18 months. Savings over a five-year period are even more dramatic.

Designed specifically for Refuse Derived Fuel the Eshland system consists of two major components; the combustion chamber and the heat recovery boiler. The heat

recovery boiler incorporates a unique induced draft fan which draws air through the combustion chamber creating a slight vacuum minimizing ash and dirt leakage. The cyclone separator on the exhaust stack prevents fly ash from being discharged into the atmosphere.

Fully automatic controls respond to heating load and prevent over-heating. Manual loading units or hydraulic ram charging models are available depending on size and type of installation.

Alternative Energy Systems also offers a complete line of automatic coal stokers manufactured under the Eshland "Coal Gun" trade name. In five sizes from 130,000 to 1,650,000 BTU (or 50 HP)

One of these units rated at one million BTU output, is installed at Weaver's Repair Service in Denver, Pa. This installation, featuring totally automatic coal feed and ash removal, is to be test fired and demonstrated, to the

public on Saturday, Aug. 28. Allen Lawver, owner of Alternative Energy Systems, and Roger Eshelman, from Eshland Enterprises engineering and

development, will be on the premises from 1-4:30 p.m.

Eshland Enterprises holds an A.S.M.E. certificate of authorization for code construction of heating boilers.

Call or write Alternative Energy Systems, 501 East Main Street, New Holland, Pa. 17557 or (717) 354-0412, for additional literature and directions to the open house.

Quaker State Farms names new manager

KLINGERSTOWN — Quaker State Farms, Inc., Klingerstown, has appointed Martin K. Fflieger as general manager.

Fflieger joined Quaker State Farms in June of 1980, and served as production manager in charge of pullet growing and egg production.

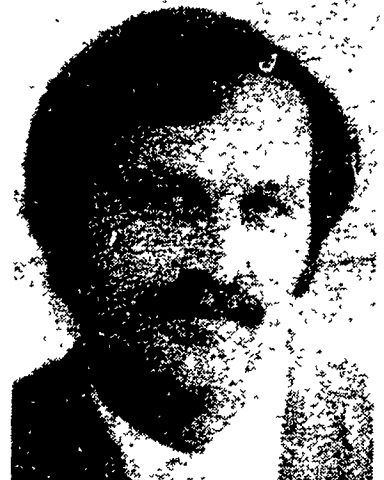
A resident of Lancaster County for the past 21 years, Fflieger, his wife, Shirley, and their four children, Martin, Robin, Michael, and Matthew, live in Manheim.

He is bringing 18 years of ex-

perience in the poultry industry into his new position.

Quaker State Farms is a 350,000 bird layer operation with the capacity to grow 180,000 pullets. The company grade and markets its own eggs, and operates an egg breaking plant that distributes liquid and frozen egg products.

In addition, Quaker State farms approximately 1000 acres and operates Quaker State Feeds, a feed manufacturer for the poultry industry.



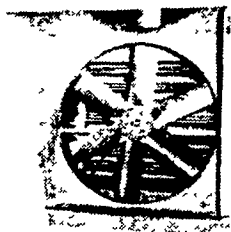
Martin K. Fflieger

ZIMMERMAN

HOLLANDER RD, RD3
NEW HOLLAND, PA
17557
717-354-9611

MANUFACTURING CORP.

DAIRYMEN:
Auger Systems For
Emptying Manure Pits
NOW AVAILABLE



AIR-O-MATIC
VENTILATION SYSTEMS



WAGON GEAR
A Versatile Economical Elevator
for Balcony and Ear Cobs
PORTABLE ELEVATORS

Call For Prices And Your Local Dealer

See Us At Ag Progress Days, Aug. 24-26th

Turn your corn silage into a balanced feast.

Boost the protein and phosphorus; balance the trace minerals with Namolco LSA™ Liquid Silage Additive. It's the safe and economical corn silage additive for your beef and dairy animals. Odorless, non-irritating, non-corrosive. And available at:

Namolco
Mol-Mix LPS
liquid supplements

MARTIN'S AG SERVICE
Rt. #1
New Holland
717-354-4996

NORTHAMPTON FARM
BUREAU
300 Bushkill Street
Tatamy, PA 18085
215-258-2871

AGRONOMY INC.
Box 210
Mercersburg, PA
717-328-3145

RED WING

ASK THE MAN
WHO WEARS THEM



**FARMERS' FRIEND
BARN BOOT**

For active farmers Rugged barnyard acid resistant uppers for extra-long wear on hardworking feet Come try on a pair

NO. 565

Width	A	B	C	D	E	EE	EEEE
Size	10-14	8-15	7 1/2-14	6-16	6 1/2-13	6 1/2-13	6 1/2-13

**CARPENTERS
and BUILDERS
ALL-AROUND
FAVORITE!**

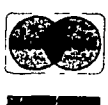
This handsome B moccasin toe model has been a popular favorite for years! Oil-tanned Brown Chrome uppers rolled top band combined with crafted-in comfort Super-tough Neoprene soles for action wear too!



NO. 214

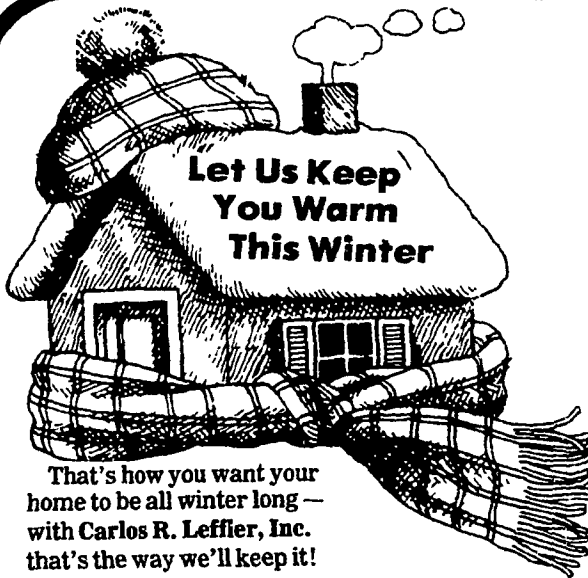
FOR THE FOOT HARD TO FIT!

Width	AA	A	B	C	D	E	EE	EEEE
Size	10-15	9-14	7 1/2-16	6 1/2-14	5-16	6-14	6-14	7-13



**WAYNE'S
DRY GOODS**

271 W. MAIN STREET - KUTZTOWN, PA. - PHONE 215-683-7686



Let Us Keep
You Warm
This Winter

That's how you want your home to be all winter long — with Carlos R. Leffler, Inc. that's the way we'll keep it!

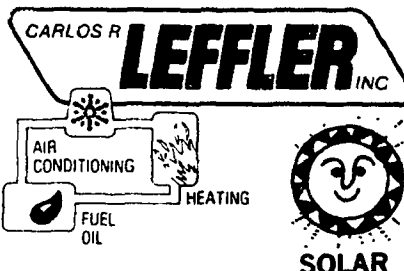
**FUEL
OIL**

**TAKING CARE
OF BUSINESS means
TAKING CARE
OF YOU**

Compare & Save...

#2 FUEL OIL \$1.07*
#2 DIESEL FUEL \$1.07*
REGULAR GAS \$1.19*

* Less 1% For 10 Day Payment
• Large Tank Discounts Available •



Richland 717-866-2105
Lebanon 717-272-2541
New Holland 717-354-4136
Reading 215-376-7364
Mt. Joy 717-653-8026
Lancaster 717-397-8244