

Cattle gain better on treated alfalfa

BELTSVILLE, Md. — Holstein steers gained twice as much weight when fed alfalfa silage treated with formaldehyde and formic acid as when fed untreated feed according to USDA scientist Dale R. Waldo.

Waldo, of USDA's Agricultural Research Service, explained experiments include freshly cut alfalfa stored without and with a mixture of .13% formaldehyde and .15% formic acid. Cattle fed the untreated silage gained an average of 471 grams (1.0 pounds) daily. Those fed the formaldehyde and formic acid-treated silage gained an average of 956 grams (2.10 pounds) daily.

Waldo, a research nutritionist,

observed that formaldehyde protects protein in the silage from being broken down by bacterial and natural chemical action. This preserves more protein for the cattle to digest. When a solution of formaldehyde is sprayed on silage, part of the chemical is bound to be the protein in the silage. The stronger acid of the cow's stomach frees the protein from the formaldehyde for digestion and the formaldehyde is metabolized by the cow.

The second additive, formic acid, protects carbohydrates in the feed. Its use on silage has been approved by the Food and Drug Administration (FDA). The use of formaldehyde on silage, however,

has not yet been approved by the FDA. Waldo indicated that additional tests are needed to prove its safety.

Balance studies by research nutritionist Henry Tyrrell, a colleague of Waldo's at USDA's Animal Science Institute in Beltsville, MD, showed that animals fed the treated silage retained more nitrogen than those on the other diet. The findings indicate, he said, that they converted more of their feed into lean body tissue than did the other group of cattle.

Treatment of silage with formaldehyde is economically feasible on small farms as well as in large farming operations, Waldo

Middletown Fair opens on Monday

MIDDLETOWN — Preparations are being completed for the 37th Annual Community Fair, which opens Monday at the Middletown Kiwanis Park and continues through Saturday.

The fair will include exhibits of vegetables, fruits, baked goods, home-canned produce and needlework, as well as livestock and arts and crafts. It is open to the public and admission and entertainment are free.

Opening day on Monday is reserved for registration of entries from the public. Ribbons and cash prizes are awarded.

Registration of livestock exhibits by 4-H and FFA members will be

conducted on Wednesday, beginning at 1 p.m. Judging of livestock exhibits will be conducted that evening.

Booth space at the fair is available for charitable and business organizations, with limited indoor space available. Interested parties are asked to contact Art Lutz at 944-3582, or 566-0008.

The Middletown Community Fair is held at the Kiwanis Park, which is located across the Swartara Creek from Middletown in the community of Royaltown.

Free entertainment on the Midway begins on Tuesday and continues all week, including country music, polka dancers, and Zembo String Band.

said. (Formaldehyde costs about 16 cents a pound). The need for feed supplements such as corn and soybean meal is reduced when formaldehyde-treated silage is used.

READ LANCASTER FARMING FOR COMPLETE AND UP-TO-DATE MARKET REPORTS

COMPLETE FARM PAINTING

INDUSTRIAL

RESIDENTIAL



COMMERCIAL

We Use Quality Paint

AERIAL LADDER EQUIPMENT

- Modern and Efficient Method
- Reasonable Prices
- Spray-On and Brush-In Method
- Sandblasting if Necessary

For Free Estimates Write or Call:

ESH SPRAY PAINTING

717-687-7007 or 687-8262

SPRAY-ON AND BRUSH-IN PAINTER

637 Georgetown Rd.
Ronks, PA 17572

WHITE WASHING with DAIRY WHITE

- DRIES WHITE
- DOES NOT RUB OFF EASILY
- NO WET FLOORS
- IS COMPATIBLE WITH DISINFECTANT & FLY SPRAYS
- WASHES OFF WINDOWS & PIPELINES EASILY

BARN CLEANING SERVICE AVAILABLE WITH COMPRESSED AIR

To have your barn cleaned with air it will clean off dust, cob webs & lots of old lime. This will keep your barn looking cleaner & whiter longer.

High Pressure Washing And Disinfecting Poultry Houses & Veal Pens

We will take work within

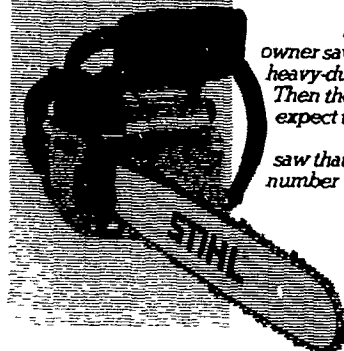
100 mile radius of Lancaster

MAYNARD L. BEITZEL

Witmer, PA 17585 717-392-7227

Barn Spraying Our Business, not a sideline.
Spraying since 1961.

THE STIHL 010. IT'S ONE TOUGH LITTLE NUMBER.



Stihl builds this powerful homeowner saw the same way they build their heavy-duty professional models. Tough. Then they put features on it that you'd expect to find only on bigger saws. So, if you're looking for a chain saw that cuts like a pro, we've got your number. The Stihl 010.

FREE DEMONSTRATION
Chain Saw - Concrete & Metal Saw Rentals

STOLTZFUS WOODWORK

RD Gap PA Box 183
1 Mile North Rt. 897 From Gap

MARTIN HARDWARE & EQUIPMENT CO

Rt. 501 1/2 Miles South of Schaefferstown, PA
Phone 717-949-6817

A & B SALES & SERVICE

2 Miles South of Rt. 23 Along 772
Thru Monterey - RD 1 Ronks, PA

WES STAUFFER SMALL ENGINES

RD 3 Ephrata, PA Phone (717) 738-4215 Ephrata Ext New Rt 222
1/2 Mile West on Rt. 322, Turn left onto Pleasant Valley Rd

BUY DIRECT & SAVE

QUALITY DESIGNED STORAGE BARNs
ALL WOOD CONSTRUCTION SINCE 1973

— BUILT TO LAST! —



ECONOMY BARN

MINI BARN

See Our Display at Green Dragon Every Friday

- Instant Installation on your Prepared Site
- Complete with Floor and Paint
- All Sizes Fully Assembled

MINI BARN SPECIFICATIONS

- 4x4 Pressure Treated Skids for Runners
- 2"x4" Floor Joists Spaced 16" on Center Covered with 5/8" Plywood
- 2x4 Stude on Corners, 2x3 in Center
- Roof Trusses are 2x6 and 2x4 Covered with 3/8" Plywood
- 240 lb. Shingles on Roof
- Sidewalls are 5/8" Rough Sawn Texture Plywood Exterior
- Colors - Red, Green, Gray, 3 Shades of Brown

MINI BARN PRICES

MINI BARN PRICES	ECONOMY BARN PRICES
• 6x8 \$365.00	• 6x8 \$325.00
• 8x8 \$410.00	• 8x8 \$375.00
• 8x10 \$475.00	• 8x10 \$400.00
• 8x12 \$525.00	• 8x12 \$440.00
• 8x14 \$575.00	• 8x14 \$495.00
• 10x12 \$625.00	• 10x12 \$545.00
• 10x14 \$675.00	• 10x14 \$595.00
• 10x16 \$725.00	• 10x16 \$645.00
• 12x14 \$775.00	• 12x14 \$695.00
• 12x16 \$850.00	• 12x16 \$770.00
• 12x20 \$985.00	• 12x20 \$885.00
• 12x24 \$1195.00	

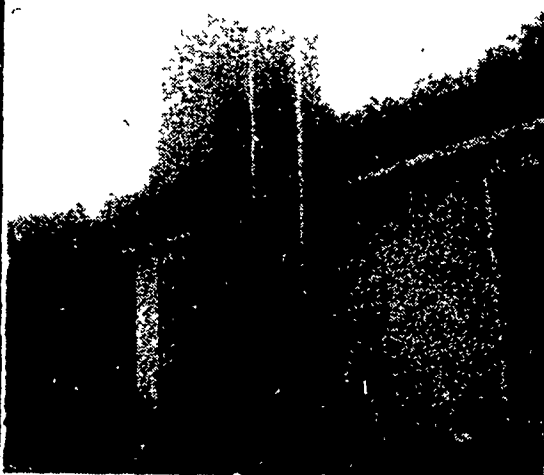
LANTZ STRUCTURES

3007 W. NEWPORT RD.
RONKS, PA 17572

2 1/2 Miles S. of Rt. 23 - Along Rt. 772
Leave Messate at 717-656-9418

HOURS Mon thru Fri 9-9 Sat 9-5 Closed Sun

CUSTOM MADE FEED BINS FOR FARMS — FEED MILLS



- Made of 13 gauge Steel
- All welded seams
- Gravity Flow or Auger

Free Estimates

Also - Steel Roof Trusses for buildings - Portable Hog Buildings - Bucket Elevators - Grain Augers Distributors - Flow Pipes & Accessories

We Sell, Service & Install
Ph: 215-944-7808

STOLTZFUS WELDING SHOP

Owner - Samuel P. Stoltzfus
RD 1011, Dryville Rd.
Fleetwood, PA 19522

IMPROVE FEED PALATABILITY AND PROFITABILITY BY USING LIQUID AND DRY MOLASSES PRODUCTS IN YOUR FEED FORMULATION FOR ANIMALS FROM ZOOK MOLASSES CO.



- Liquid Feeding Cane Molasses
- Honey Brook Brand Dried Molasses - 50 lb. Bag
- Z Brand Dried Molasses - 50 lb. Bag
- Honey Brook Energiblock - All Natural 20 - No. Urea
- Energiblock - Hi Protein 36
- Energi Cubes for Horses

GOOD FOOD INC.

GOLDEN



BARREL

Household Molasses and Syrup

- ★ BAKING MOLASSES
- ★ PANCAKE SYRUP
- ★ CORN SYRUP
- ★ WORCHESTERSHIRE SAUCE

- ★ BARBADOS MOLASSES
- ★ HONEY
- ★ SORGHUM SYRUP

- ★ BLACKSTRAP MOLASSES
- ★ TABLE SYRUP
- ★ SHOO-FLY PIE MIX

MOLASSES FOR THE ANIMAL or THE KITCHEN

Contact:

ZOOK MOLASSES CO.

WEST MAIN ST., BOX 160, HONEY BROOK, PA. 19344
Phone 215-273-3776 or 717-393-3987
Call toll free in area code 215 & 717: 800-662-7464