

MILK MARKET NEWS

Federal Order No. 4

Class I Milk Price Unchanged
Middle Atlantic Order Market Administrator Joseph D. Shine recently announced a Class I milk price of \$15.20 per hundredweight for September 1982. This price is unchanged from August and is 11 cents below the September 1981 Class I price.

Shine announced a Class II milk price of \$12.47 per hundredweight for July 1982 and a butterfat differential of 17.0 cents for the month. The Class II milk price is up seasonally by 14 cents from June while the butterfat differential increased one-tenth of a cent.

These class prices are based on the July 1982 Minnesota-Wisconsin manufacturing milk price of \$12.42 per hundredweight at a 3.5 percent butterfat content.

The USDA reported that the wholesale price of Grade A butter at Chicago for July was \$1.4759 per pound and the nonfat dry milk price was \$.9342 per pound, f.o.b. plants in the Chicago area.

Comments asked on proposed suspension

Dairy farmers, cooperatives, milk handlers and consumers may comment until Aug. 10 on a proposal of the U.S. Department of Agriculture that would suspend certain provisions of the Middle Atlantic federal milk marketing

order.

Edward T. Coughlin, dairy official with USDA's Agricultural Marketing Service at Washington, D.C., said the proposal would suspend for September the requirement of the order that limits diversions of milk directly from dairy farms to nonpool plants. He said Inter-State Milk Producers' Cooperative requested

the suspension. The cooperative association has also asked USDA for a public hearing to increase the diversion allowances permanently.

Coughlin said Inter-State claims the present diversion allowances would result in uneconomic shipments of milk under current market conditions simply to allow the milk to be pooled under the

order.

Copies of the suspension are available from: Joseph D. Shine, market administrator, P.O. Box 710, Alexandria, Va. 22313 — telephone (703) 549-7000; or, Dairy Division, AMS, USDA, Washington, D.C. 20250.

Comments should be sent to: Hearing Clerk, Room 1077-S, USDA, Washington, D.C. 20250.

N.J. sheep club holds annual show

FLEMINGTON, N.J. — Twenty-four Hunterdon County 4-H Sheep Club members exhibited 35 animals during the annual sheep show held at the Achievement Fair, here. The young 4-H'ers were members of the Hunterdon County 4-H Sheep Club and the All Breeds 4-H Sheep Club.

Champion Ewe of the show was a Hampshire owned by Cindy Gengler, Pittstown; Reserve Champion Ewe of the Show was a Suffolk owned by Patrick Eckrich, Milford; and the Champion Grade Ewe of the Show was shown by Heather Hunter, South Branch.

Trophies, presented by the Flemington National Bank and Trust Co., went to Susan Kuehn, Flemington for the best ex-

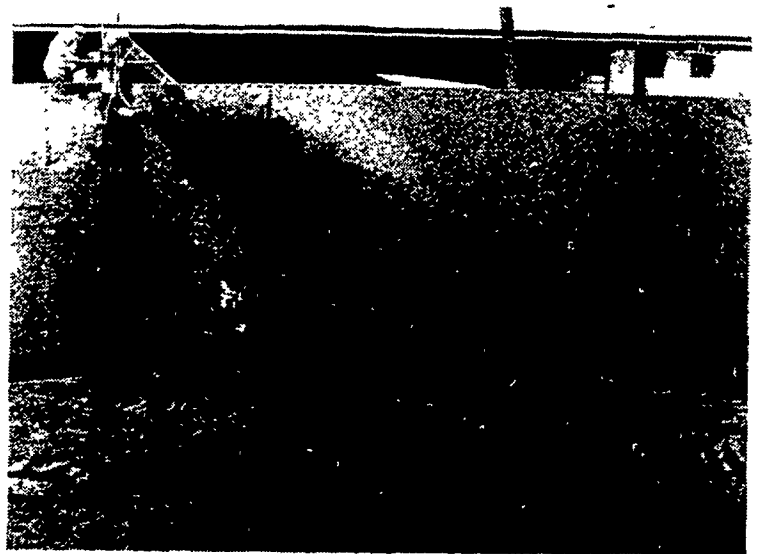
perienced showman and to Shelly Snarke, Flemington, for the best first year showman.

Second place beginner showman was Chris Tropeano of Annandale and second place experienced showman was Laura Menard, Lebanon.

Other members exhibiting first place animals included Sherry Horvath, Charles Hildabrant, Denise Holman, Laura Menard, and Cinamon Ford.

Judge for the show was William C. Buchanan, former member of the Hunterdon County 4-H Sheep Club.

Prior to the show a sheep fitting demonstration was given by Liz Panacek, president of the Hunterdon County Sheep Club.



HERE'S THE FILL & STIR PIPE FOR YOUR LIQUID MANURE TANK

Whenever you fill an above-ground liquid manure storage tank you worry if you will ever be able to get it empty again. Will the solids settle in the bottom to cause an impossible mixing problem? Will your equipment clog? Will you need to add so much water you'll be hauling manure for days?

Now you can relax. Because US Farm Systems of Pennsylvania has just designed a unique fill and stir pipe unit. This fill and stir unit sits vertically in over the top of the tank and you use your present transfer pump. You can transfer/fill the manure under the top crust. And since the top crust is not broken you keep all the plant nutrients in the tank.

When you get ready to haul manure, the mixing capability of this unit really goes to work for you. The top opening with a flexible snout moves up and down and sideways to allow you to discharge a stream of liquid in any direction to break up the top crust. At the same time, you can start a stirring action at the bottom of the tank by forcing liquid out of the lower opening of this unit.

So don't worry if you will get the manure out of your above-ground liquid manure tank any more. Write to US Farm Systems of Pennsylvania, 3053 Barren Road, Oxford, PA 19363. Or call today for an action-packed demonstration. Phone (301) 398-2948.

US FARM SYSTEMS
of Pennsylvania
Your Manure & Feed Equipment Dealer

ZIMMERMAN

HOLLANDER RD, RD3
NEW HOLLAND, PA
17557
717-354-9611

MANUFACTURING CORP.

ATTENTION DAIRYMEN:

AUGER SYSTEMS FOR EMPTYING MANURE HOLDING PITS



PORTABLE



STATIONARY

EFFICIENT, ECONOMICAL, AND REQUIRES LESS HORSEPOWER THAN MOST SYSTEMS

Call For More Information!

DON'T BREAK YOUR BACK GET THIS STURDY 2-TON

POWR-PULR

Hitch this handy cable power puller to all those back-breaking jobs. Every do-it-yourselfer should have one! Its high leverage ratio moves up to 4000 lbs. Double safety hooks and 13' of cable included. Send check or money order for prompt delivery.

USES:
MOVING
FENCING
FARMING
BOATING
CAMPING
HOISTING
TRUCKING
BUILDING
MOTORING

ONLY \$21.95 plus \$2. shipping
PA residents add 6% sales tax

R. L. STEPHENSON, INC.
1007 Industrial Blvd., Southampton, PA 18966

We Specialize In Aerial Work Using Our Twin Bucket Boom Truck

Extends To 55 Ft.

ELECTRICAL CONTRACTING

Specializing in AGRICULTURAL WIRING

Also Residential, Industrial And Commercial Work. Free Estimates

C.M. HIGH CO.
320 King St.
Myerstown, PA 17067
Phone: 717-866-7544

We Have Poles In Stock: 25', 30', 35' & 45'

Quality Building Systems

7 KEENER RD., LITITZ, PA. 17543
PH: (717) 626-5204

YOUR RELIABLE BUILDER

- DAIRY • BEEF • SWINE • POULTRY
- HORSE BARN • ALL PURPOSE BUILDINGS

Schuld Bins & Feed Systems

Cablevey Feed Systems

BUILDING SPECIAL

60' Wide by 120' Long Building

As Low As \$3.00 per Sq. Ft.

