

Public Sales Register

Closing Date - Monday, 5:00 P.M. of each week's publication

SAT AUG 28 - Public Sale of Furniture, Antiques, Tools, Quilts, Groceries, Dry Goods and Sporting Goods. Located on Rt 23 between Leola and New Holland Seventh Annual Sale Bareville Fire Co. 211 E Main St., Leola, PA.

SAT AUG 28 - 10 A.M. Public Sale of Farm Equipment, Cars, Trucks, Motorcycle, Snowmobiles, Lumber, Lawn and Garden Equipment and Woodworking Tools. Located in York Springs, 1/4 mi. north of Rt 94 interchange, Rt 15, on Ridge Rd Golden Ridge Rd. Golden Ridge Farms, Owner Clair R Slaybaugh, Auctioneer

SAT AUG 28 - 9:30 A.M. Public Sale of Farm Machinery, Butchering Tools, Antiques, Shop Tools and Lumber Located in Chester Co., Pa 5 mi. west of Coatesville, 4 mi. east of Gap, at Jet, of Rt 30 and 10 go south on Rt 10 to 1st road left, follow thru to sale Annie M Smith Estate Steve Petersheim, Auctioneer

SAT AUG 28 - 9 A.M. Public Sale of Real Estate, Equipment, Tools, Antiques and Collectibles Located 1 mi north of Leck Kill, Upper Mahoney Twp., Northumberland Co., PA, 21 mi southeast of Sunbury, turn off Rt 225 at Campbell Chevrolet in Village of Red Cross Katherine E. Auman, Owner George and Mike Deibert, Auc-

tioners
SAT. AUG 28 10 A.M. Public Sale of Furniture Household Goods and Antiques. Located along Pleasant View Rd. RD #5, Manheim, PA. nor-

theast of Manheim, follow the Doe Run Rd east from the Manheim square, turn left onto the Penryn Rd approx 2 mi to Pleasant View Rd. sale at corner of Pleasant View Rd and Penryn Rd Mr and Mrs John W Randler, Owners John D Stauffer, Auctioneer

SAT AUG 28 - 9:30 A.M. Public Sale of Farm Machinery, Butchering Tools, Antiques, Shop

PUBLIC SALE OF FARM EQUIPMENT & SHOP EQUIPMENT WEDNESDAY, AUGUST 18

At 10:30 A.M. Located 2 miles east of Hinkletown, along Rt. 322.

FARM EQUIPMENT

IH 574 diesel tractor, 1,000 hrs. w/2250 loader (like new); IH 606 diesel tractor; IH 550 manure spreader, like new; IH 455 corn planter; 5 tooth chisel plow; Harrow; Cultipacker; Oliver transport disc; Sickle bar mower; New Idea #323 single row corn picker; Lamco forage wagon; 717 NH 2 row narrow head harvester (Wisconsin 36 HI engine).

SHOP EQUIPMENT

Wood sander; Drill press; 180 Amp welder; Torch; Steel cut-off saw; Steel band saw, (like new); Chain hoist; 90,000 BTU Ready heater; 250 cc Yamaha motorcycle; Model 302 Echo weed-eater; Echo 315 chain saw; Wood stove; Pool table; Convection oven; Cedar closet; Other items not mentioned.

NOTE: Very few small items, Farm Equipment to be sold at 11:30 A.M.

Terms By:

GLENN E. & JOYCE WEAVER

Elton & Alvin Horning, Auctioneers
Horning Farm Agency, Inc.

Main St., Morgantown, Pa. 19543

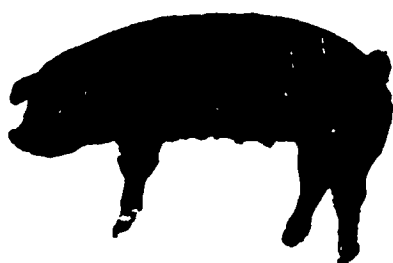
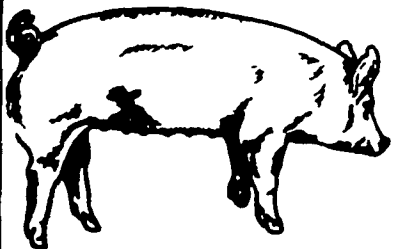
LUNCH AVAILABLE

Lawrence, Leon and Thomas Arnold 23rd PRODUCTION SALE

OF

Yorkshires

Durocs



Auctioneer: Harry Bachman, Anville, PA

APPROX. 70 BRED GILTS
(All gilts are hand mated)

Registered Yorkshire — Registered Duroc — Landrace — Due Aug., Sept., Oct

BOARS (Seven to eight months old)

Feed Efficiency & Test Station Information
25 YORKSHIRE - 15 DUROC

OPEN GILTS (Ready to breed)

YORKSHIRE, CROSSBRED, DUROC

Soundness and production are top priorities in our breeding program. Our Yorkshire herd is unsurpassed in production per sow for herds this size. Our animals have done well in test stations. Pennsylvania's 1st Superior Certified Duroc Meat Sire came from our herd. We also had the top indexing boar over all breeds, Pa. State 1979 ("Hustle") and the top boar in Delaware 1980 (Explorer).

All animals vaccinated for Erysipelas & Lepto & Rhinitis. Validated Brucellosis & Pseudorabies Free herds.

Friday Evening

AUGUST 20, 1982, 6:00 P.M.

SALE TO BE HELD AT THE
LEBANON AREA FAIRGROUNDS
(Cornwall & Evergreen Roads, 1 1/2 Miles South of)
Lebanon, PA

CALL OR WRITE

Yorkshires

Leon L. Arnold,
R D 7, Box 705
Lebanon, PA 17042

Durocs

Lawrence Arnold,
1245 Cumberland St
Lebanon, PA 17042

717 273 5880 717 272 9827

CATALOGUES AVAILABLE AUGUST 1st
NEXT SALE NOVEMBER 5, 1982

ools and Lumber Located in Chester Co., PA, 5 mi west of Coatesville, 4 mi east of Gap at Jet, off Rt 30 and 10 go south on Rt 10 to 1st road left Annie M

Smith Estate Steve Petersheim, Auctioneer — SAT AUG 28 - 10 A.M. Public Sale of Shop Equipment, Power and Hand Tools, Antique Tools, Car Parts, Furniture and Lumber Located at 1423

E King St., Lancaster, PA, along Rt. 462 just east of Lancaster Square. East

End Body Shop, Owner, Howard Shaub and Roy C. Probst, Auctioneer

PUBLIC SALE

FARM EQUIPMENT, LIVESTOCK, ANTIQUES
HOUSEHOLD ITEMS, TOOLS,
BUTCHERING TOOLS
SATURDAY, AUGUST 21, 1982

At 9:00 A.M.

Location 351 Elco Dr., Myerstown, Leb. Co.

FARM EQUIPMENT

John Deere A Tractor, Oliver 60 Tractor, Allis Chalmers B with loader, cultivator, New Idea 1 row Corn Picker, New Holland 66 Baler, Oliver Grain Drill, 2 flat bed wagons, 2 wheel trailer, iron wheel trailer, 3,000 lbs. trailer (7'x10') with high side, David Bradley side hay rake, 4 row corn weeder, Int. 2 row corn planter, Case disk, John Deere disk plow, Int. manure spreader, Case grass mower, land roller, walk behind potato plow, 1 row potato planter, Case 1-row tobacco planter, 2 hole corn sheller, New Holland hammermill, antique fodder shredder, belts, hog feeders, hog waterers, new lumber 2x4, 4x4, pine barn boards, 4" grain auger w/motor, corn drag elevator, alum. elevator, grind stone w/motor, bag wagon, junior apple cider press, Toro 7 H.P. riding mower, 28 foot wooden extension ladder, gas pump, hand tools, nuts, bolts, nails, etc. Small power tools.

LIVESTOCK

3 bred mixed breed sows, 1 Poland China Boar.

BUTCHERING ITEMS

Sausage stuffer, iron kettles, knives, tables, slicer, scale, etc.

ANTIQUES & HOUSEHOLD ITEMS

Oak Extension Table w/6 boards, Mellville Clark Apollo, player piano, piano rolls, drop-leaf table w/drawer, 4 cane seat chairs, cane seat rocker & chair, Hohner accordion, 2 wooden beds, oak dresser, blanket chest, jelly cabinet, old cabinet base, copper kettle, chest of drawers, oak desk, maple single bed, chairs, tables, mantle clock, wall mirror, dishes, glasses, flat irons, glass butter churn, 5 gallon crock, 1 gallon crocks, old wooden sewing box, 2 shawls, comforters, quilt, old x-mas balls, basket, homemade carpet, wooden sugar bucket, Coldspot chest freezer, Zenith floor B&W TV, Sears automatic washer, Philco twin automatic washer, adding machine, sofa bed, studio couch.

Mr. & Mrs. Blecker have sold their farm. Must sell the above items and will find more items till sale date.

Terms: Cash. No out of state checks. Sale order to be posted morning of sale.

Directions: From Lancaster follow Route 501 North (approx. 20 miles) to Country House Restaurant, turn right follow Elco Dr. about 2 miles to farm.

Terms by:

HAROLD R. & ESTHER M. BLECKER

Dave Risser Auc.

211 E. Main Ave., Myerstown, Pa.
Phone 717-866-6873

Refreshments served by St. Paul's UCC Church, Schaefferstown, Pa.
Not Responsible For accidents

ROBERT LASEK DISPERSAL

Lake Como, Pa. Buckingham Twp. Wayne Co.

A public sale on the farm located 1 mile E. of Pa. Rt. 247 on the Camp Wayne Rd., 2 miles S. of Preston Park via Rt. 370; 7 miles S.W. of Hancock, N.Y., 25 miles N. of Honesdale. Watch for Bunnells Red Arrows.



SATURDAY
AUGUST 21, 1982
10:00 A.M. Sharp

53 REG. & HI-GRADE HOLSTEINS 53

All 30 day T.B. & blood tested free herd. Pa. and interstate charts. 95% calfhood vaccinated. Examined for pregnancy by local vet.

This top producing Wayne Co. herd consists of 38 milch cows, 24 reg. Several fresh, 9 due Sept. & Oct., 10 due in Nov. & Dec., balance due early winter. 15 beautiful yearling heifers w/10 reg.

Sale Highlights - R.H.A. 14,708M 578F 3.9%. Individual records 305d, Kay Gr. 19,551M 707F, Princess Reg. 18,390M 789F 4.3%, Chris Reg. 17,609M 613F just fresh, Amy 294d 17,334M 647F, Rose Gr. 289d 17,952M 597F, Claire Reg. 17,301M 626F - springer, Lisa Reg. 16,871M 605F and Many other fine records at ringside.

Sires Represented - 4 dau's Willow Farm Rockman Ivanhoe, 5 Nicolk Sunshine Bold Chief, 3 Zion View Amy's Grand Fortune, 2 Bis May Astro Jupiter and many other top sires.

These cows will please the most critical buyer, young, show plenty of size type & production you will see.

Massey Ferguson 165 Diesel W.F.E. Tractor w/only 1100 hrs.; Bob Cat 610 Skid Steer Loader, M.H. 22 Tractor, M.F. 7 pt. sickle bar mower, Woods 7 ft. terrace blade - A-1, Win-Power P.T.O. 25K generator w/trailer, A.C. Baler w/606 kicker, N.H. side rake, M.H. 6 ft. mower, hay wagon, hay conditioner, side rake, M.H. 6 ft. mower, hay wagon, hay conditioner, 5 ft. Bushhog, tr-chains, buzz saw, 36 ft. elevator, 300 gal. gas tank, elec. water fountains, 5 calf hutches, new 24 in. barn fan, 2 water tanks, forks, shovels, feed cart, elec. fencing, security light and wheelbarrow.

10:00 A.M. HOUSEHOLD GOODS

G.E. elec. range A-1, cabinets, Coldspot refrigerator A-1, Whirlpool washer, G.E. dryer, 22 cu. ft. freezer, bedroom suite, rugs, bookcases, SS sink, Ashley wood stove, Kero-Sun heater, Franklin stove, TV antenna w/boosters, New unfinished cupboards, kitchen appliances, utensils, curtains, drapes and much more.

Make plans to attend this good complete dispersal. Sat. Aug. 21 at 10:00 A.M. - Lunch served.

Terms: Cash - Approved FHA checks or I.D. personal checks.

Owners

ROBERT & SUSAN LASEK

Lake Como, Pa.

Star Rt.

Merton L. Bunnell & Associates

Auctioneer & Sale Mgr.

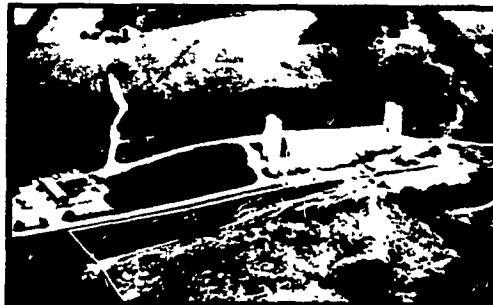
Springville, Pa.

PH: 965-2375

Wayne Weaver, Pedigrees

AUCTION

Allen Dairy Farms (2)
Cumberland County, Penna.



CARLISLE FARM

- 270 ± Acres
- Jug Milk Farm

- 300 Cow-Free Stall
- 2 Residences



MECHANICSBURG FARM

- 208 ± Acres
- Dairy Farm

- 450 Cow-Free Stall
- 1 Residence

Offered in parcels, combinations and by entirety

THURSDAY, SEPTEMBER 16th, 1:00 P.M.

At the Carlisle Farm - 2 Miles South of Carlisle along Route #34

INSPECTION: Saturday, August 21, 1 - 4 P.M.

11% Owner Financing

For detailed brochure, call or write



JOHN B. NESLEY
BROKER-AUCTIONEER
32 W. High Street Carlisle, PA 17013
(717) 249-8787