



WENGER'S INC.

OVER 150 TRACTORS
SOLD THIS YEAR

251 SOUTH RACE STREET
MYERSTOWN, PA 17067

PHONE:
DAYS: 717-866-2135

NIGHTS:
717-866-7147

OR:
717-273-9089

TRACTORS

FARMALL TRACTORS

- Cub w/Fast Hitch - Nice \$2000
- 1086 ROPS - Nice \$13,700
- 1066 Cab - Black Stripe .. \$10,900
- 856D WF - 3 Pt. \$8950
- 100 Hydro w/Rops \$7950
- Super M - Extra Nice \$1950
- F20 w/Loader - 1 Owner. ... \$1000
- Cub w/Cultivator \$2000
- 504 Farmall - Nice \$2950
- H. \$695

JOHN DEERE

- 4430 Cab - Air - Syncro ... \$17,500
- 4520 - Nice \$9800
- 4320 ROPS - WTS. \$11,000
- 4320 \$11,500
- 5010 \$6500
- (2) 730D - WF -
3 Pt \$3950 & \$3700
- 620 \$2500
- 2020D \$4900
- 820 - 2 Cylinder \$2900
- 720 Gas \$2500
- 401B - 1975 w/Winch - Nice. \$6750
- (2) JD 830 - 2 cyl. \$4500

CASE

- 1370 - 20.8x38's \$9950
- 1070 Cab - PS \$7800
- 830 CK \$3500
- VAC - Nice \$1450
- 1030 \$4900
- 580 CK w/Loader & 3 pt. ... \$6950
- 1212 - Powershift. \$6900

LONG

- 310 - New \$6900
- 310C - New \$6900
- 360 \$4800
- 560 4 WD \$5350
- 610 4 WD - New \$11,900
- 560 4 WD \$3950

MASSEY FERGUSON TRACTORS

- 1105 \$8800
- 175D - Nice \$6900
- 1130 \$6500
- 135 - Nice \$4500
- 180 - Gas \$4850

"8" 4 WHEEL DRIVE TRACTORS From 30 HP to 225 HP

- MF 1805 - Cab - Air - 3 pt PTO -
Duals - Nice \$19,500
- White 4-180 - Cab - Air - 3 pt - PTO -
Nice \$16,500
- IH 4166 - Cab - Air - 3 pt - PTO -
Nice \$12,950
- Long 610 - New - Rollbar. . \$11,900
- Long 560 - 3 pt & PTO -
Spider \$5,350
- MF 210 - Demo - Like New .. \$6250
- Long 560 - 3 pt & PTO \$3950
- Ford Major 4WD \$3950
- 4WD Unit to Fit IH \$1500
- 4WD Unit to Fit Oliver \$2500

ALLIS CHALMERS

- (2) D21 w/Cab - Nice \$7950
- 220 \$8500
- WD w/Picker \$2500
- (5) G w/Asst. Tools \$1500 to \$2000
- CA w/DYNA Balance Mower \$1750

OLIVER

- 1855 - Cab - 1700 Hrs. \$9800
- 1650 - Nice \$4950
- Super 88D \$1375
- 70 w/loader \$875

FORD

- 2000 w/Mower \$3900
- NAA \$2750
- 8N \$1975
- 600 \$2750
- 5200 w/Cab \$6950

TRACTORS - MECHANICS SPECIALS

- Oliver 1800D \$3000
- Farmall 806D \$3950
- (2) Farmall 706 \$3250 - \$3750
- JD R \$1600
- JD 4020D \$5750
- IH 656 D Hydro - WF \$3900
- JD 3020D \$3950
- Oliver 1750 \$3900

TILLAGE TOOLS

- 8' Cultimulcher
- (2) 10' Cultimulcher
- (3) 12' Cultimulcher
- 14' Cultimulcher
- 16' Cultimulcher
- 1X - 3X AC Plows
- 1X - 2X - 3X Ford Plows
- MF 5X Reset
- 1X - 2X - 4X - 5X -
6X - JD Plows
- JD 4X Reset
- Oliver 3X Rollover
- IH 2X Rollover
- 1X - 2X - 3X - 4X - 5X -
7X - IH Plows
- IH 5X - 6X Resets
- MH 1X Plow
- (30) 1X - 2X - 4X
Cultivators
- (30) Disc's - All Kinds
& Sizes
- 7' - 9' - 11' - 15' - 19'
Chisel Plows
- 3 pt. & Pull Type Field
Cultivators
- 2X - 4X - 6X Rotary
Hoes
- Howard 84" & 100"
Rotovators
- Long 55" Rotovator
- Lely 13" Roterra

HAY EQUIPMENT

- NH 68 Baler \$850
- NH 479 Haybine \$2950
- Hesston PT10
Haybine \$950
- (6) Sickle Bar
Mowers Call
- NH 258 Rake .. \$1250
- JD Rake (late) .. \$1350
- Case Baler \$695
- NH Rake \$195
- NH Mow Conveyor -
New \$350
- Mayrath 32'
Elevator \$895
- Zimmerman 32'
Elevator \$1175
- Hesston 10W Stack
Movers \$650-\$850
- JD 200 Stack
Mover \$2500
- Hesston 30 Stack
Mover \$2500
- IH 27 Baler \$695

NI UNI SYSTEMS

- 701 Tractor w/cab
- 727 Husking Bed
- 2x40 Cornhead
- 3x30 Cornhead
- Combine
- Grainhead
- 3x30 Chopper Head
- Pickup Head
- High Moisture Throat
- 2x40 Chopper Head
- 3x40 Corn Head
- 760 Chopper
- 4x30 Corn Head

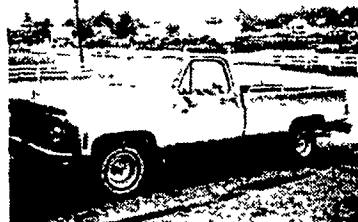
CABS (ON STOCK)

- New Cabs To Fit: MF
275 - 285 - 1150 -
1085 - 1105 - 1135 -
- 1155, Ford 5000 -
7000 - 8000 - 9000 -
- 8600 - 9600,
Case 930 - 1030,
Gleaner E
Combine
- Used Cabs to Fit: IH 06
- 56, 66
Gleaner E-CII
Combines, IH
203-303-403 - 815
Combines, Case
960 Combines, NI
701 Uni Cab
- New Cooler Units \$500
- Lots of Roll Bars .. Call

WAGONS

- New 6 Ton Gear . \$450
- New 8 Ton Gear . \$575
- New 10 Ton Gear \$675
- New 11 Ton Tandem
Gear \$975
- New 12 Ton Gear \$975
- New Bale Bodies \$495
- EZ 16' 3 Beater Box
Only - Roof \$2500
- Lamco 16' 3 Beater
Box Only - Roof. . 2350
- (2) JD 216 - 3 Beater -
Roof w/Gear ... \$2250
- JD 214 - 2
Beater \$1850
- New 16' Feeder
Box \$585
- Feeder Wagon
Complete - Used. \$575

1980 CHEVY DIESEL PICKUP



30,000 Miles, Silverado, Air,
Power Windows & Door Locks, Tilt Wheel,
All Options - 30 In All
\$7495⁰⁰

CHOICE of 2 TRUCKS BOTH NICE

COMBINES

- JD 4400 - Nice - Rotary Screen .. \$15,900
- JD 7700 D - Fire Damage \$9500
- JD 55 SB - sharp \$8900
- Case 660 - Nice \$4500
- IH 82 Pull Type \$3500
- IH 203 \$2000
- IH 303 \$2000
- JD 45 EB - Nice \$6900

HARVESTING EQUIPMENT

- NI 325 12 Roll
Picker (Late) ... \$6500
- NI 324 12 Roll
Picker \$4950
- NI 325
w/Sheller \$3800
- NI 325 8 Roll
Picker \$4900
- NI 319 12 Roll
Picker \$3000
- NI 311
w/Sheller \$1650
- NI 323 1 Row ... \$3250
- Extra 12 Roll Beds Call
- AC WD45 w/Ford 2X
Mtd. \$2500
- Shellers & Grinder
Attach Call
- (2) MM 1200
Sheller . \$3800-\$4500
- JD #6 Sheller .. \$1850
- (3) NH Super 717 Base
Choppers \$1750
- NH 707 1X ... \$1650
- (2) JD 38 Base
Chopper \$750
- IH 555 Base
Chopper \$750
- Gehl 300 Base
Chopper ... \$750
- AC 720 Base
Chopper .. \$750
- JD 25 1X 3 Pt.
Demo \$2500
- JD 35 Base
Chopper \$1250
- 1X - 2X - 3X Heads to
Fit Most Choppers
- Picker Heads to Fit
Most Choppers
- Direct Cut Heads to Fit
Most Choppers
- Snapper Heads to Fit
NH 1X and 2X -
Fox 2X and 3X
Used 4'-5'-6'-7'-8'
Rotary & Flail
Mowers
- Brady 4X Stalk
Cutter \$1350
- Flail Head For Fox

DUMPS - FARM

- 1974 Ford Louisville
18' Omaha Dump
w/Cattle Racks
Diesel \$13,950
- 68 Dodge Diesel
w/16' Dump ... \$5950

NEW EQUIPMENT SPECIALS

- 6'3 pt. Stone
Rakes \$495
- 8' 3 Pt Stone
Rakes \$595
- 6' 3 pt. Scraper
Blades \$245
- 7' 3 pt. Scraper
Blades \$295
- 8' 3 pt. Scraper
Blades .. \$395 & \$795
- Landscape
Boxes \$450 & up
- 6'6" 3 pt. Disc's \$500
- Spike
Harrows .. \$500-\$600
- 3 pt Fert
Seeders \$395
- Round Bale
Feeders \$145
- 3 pt Boom Poles . \$49
- 3 pt. P.T.O. Wood
Saws \$875
- 3 pt. 9' P.H.
Digger \$495
- 1200 Bushel Corn
Cribs \$795
- 165 Bu Gravity
Boxes \$475
- 210 Bu Gravity
Boxes \$545
- 5 3 pt Rotary
Mower \$495
- 5 Pull Rotary
Mower \$695
- 6 3 pt Rotary
Mower \$695
- 6 Pull Rotary
Mower \$795

MISC. EQUIPMENT

- NH 354 Mill ... \$3850
- NH 352 Mill ... \$1750
- Gehl Mill \$1500
- Hammermills ... \$295
- NH Table Blower \$395
- Farmhand Blurr
Mill \$1250
- P.T.O. Manure
Pump \$3500
- Corn Drags \$400
- Belt Elevators. . . Call
- 4' to 10' Snow
Plows Call
- Danuser P.H.
Diggers \$695 & up
- Lime Drills \$495
- 1X Potato Plows .. Call

WANTED

FARM TRACTORS - CRAWLERS -
COMBINES - MACHINERY

FOR OUR
SALVAGE YARD

PLANTING EQUIPMENT

- JD FBB 17 Drill
- IH #10 16 Drill
- IH 21DD Drill
- JD - IH - Ferg - 2X
Cornplanters
- Ford - IH - AC - JD -
4X Cornplanters
- JD - AC - 6X
Cornplanters
- JD 8X Cornplanter

MANURE SPREADERS

- NH 676 Tandem \$2850
- (4) IH Cub. . \$395 & Up
- NH PTO - Nice .. \$975
- NI 18 \$875
- JD N \$495
- (4) NI P.T.O. \$395 & Up

DUALS - 25 SET ON
STOCK ALL KINDS
& SIZES - CALL

LOADERS

- JD 46 Off 4020. \$1000
- JD 48 Off 4020. \$1200
- JD 148 Off
3010 \$1500
- JD 45 Off A. \$450
- Freeman Off DB
990 \$1200
- Davis Off MF 35 \$1200
- IH 2350 Off
1066 \$1900
- Drott Off IH 340
Crawler. \$900
- AC Off D17 \$650

NEXT

AUCTION
AUG. 23rd
9:30 A.M.



FOR SALE: SHOES - \$1⁰⁰ per pair

(Minimum order of 225 ass't. styles) Good for Flee
Market Stands - Yard Sales - Sidewalk Sales - Etc.
Easy to triple your investment! WENGER'S INC.
(717) 866-2135

COME TO THE PEOPLE THAT DO BUSINESS