

FARM EQUIPMENT

FOR SALE

Automatic Roller Mill and trailer mount ATA 1800x6  
 1973 Int. truck with Os-walt mixer 380 cu. ft.  
 Danhauser hydraulic post driver, 3 point hitch  
 Big Dutchman Starney 8 ton feed tank and chain feeder  
 Allis Chalmers combine head, 3 row 30" adapter for Field Queen  
 Flail head for Field Queen  
 5-slat silos  
 1 - 10x40  
 3 - 12x40  
 1 - 16x40  
 1 - 14x40  
**Crumland Farms**  
 John Crum  
 301-662-5759  
 Denny Crum  
 301-662-0407  
 Frederick, MD 21701



JD 4440 Tractor w/cab  
 JD 4020 Tractor F.S. W.F.  
 JD 4010 Tractor propane  
 JD 3020 Tractor WF  
 JD 2640 Tractor w/145 Loader  
 JD 2440 Tractor  
 JD 2240 Tractor  
 JD 850 Tractor  
 JD MT Tractor w/plow, Cultv. and Mower  
 JD 60 Tractor  
 MF TO30 Tractor  
 Farmall M Tractor  
 Farmall H Tractor  
 IHC 656 Tractor  
 JD 170 Skid Steer Loader  
 JD 1209 Mower Conditioner  
 JD 336 Baler w/ejector  
 JD 24T Baler w/ejector  
 JD 7000 6R Conv. Planter w/Liquid Fert.  
 JD 1240 4R Flateless Corn Planter  
 JD 1440 No Till Corn Planter  
 NI 325 2R Corn Ficker  
 JD 3800 Chopper w/2R corn head  
 JD 35 Chopper w/2R corn head  
 JD BWA Disc  
 JD B Flane 15 Disc Grain Drill  
 JD FB Grain Drill  
 JD 300 corn husker w/2R cornhead  
 JD 6620 Sidehill Combine w/215 Flex Platform & Cornhead  
 JD 7700 Combine  
 JD 6600 Combine w/15' Platform & 443 Corn Head  
 JD 105 Combine w/platform and corn head  
 Gleaner MKS 2 combine w/platform & 6R corn head  
 Gleaner A Combine  
 IHC 205 Combine w/13' platform  
 JD 709 Rotary Mower  
 Bush Hog 160 FT Rotary Mower  
 MF 3 pt. Sickle Bar Mower  
 JD 125 Chuck Wagon  
 NI 279 Cut/ditioner  
 JD 2800 6B Flow  
 JD 2800 5B Flow  
 JD 145 6B Flow  
 JD 1450 5B Flow  
 IHC 5B Flow  
 IHC 6B Flow  
 JD 27 Flail Shredder

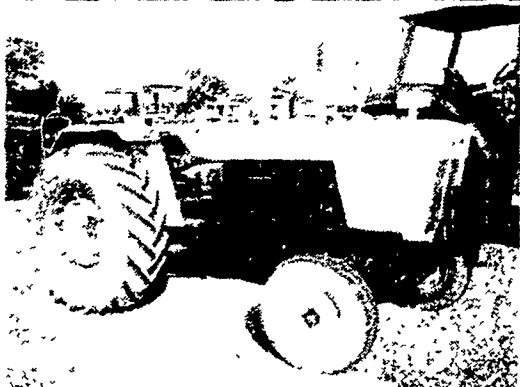
**ENFIELD EQUIPMENT INC.**

Whiteford, MD 21160  
 Ph: 301-452-5252

**WENGER'S INC.**

251 S. RACE ST. MYERSTOWN, PA 17067

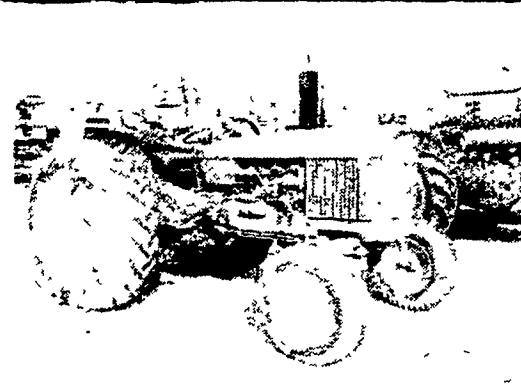
DAYS: 717-866-2135  
 NIGHTS: 717-866-7147  
 or 717-273-9089



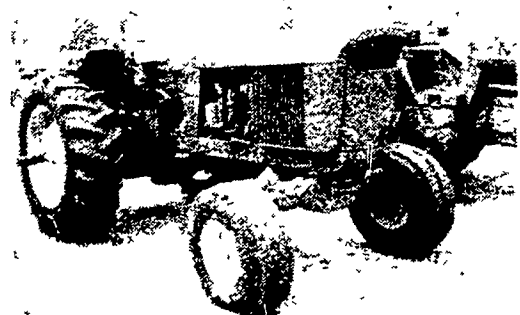
David Brown 1212 Powershift Good Tractor \$6900



Farmall 1086 - Good Condition - \$13,700 or rent me \$1750 per month



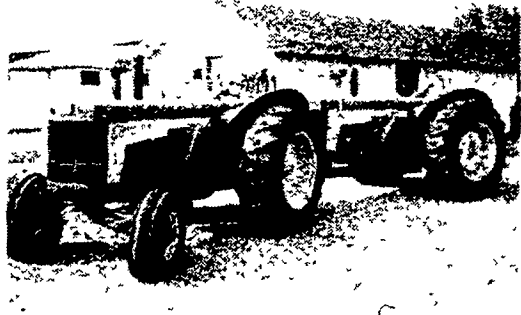
JD 2020 Diesel - Time To Move \$4900



1969 JD 4520 Side Console Nice \$9800



Case 1845 Diesel - 1979 runs good \$7900



JD 830's - Nice & Clean - \$4500 each or buy the train - \$8750



1977 White 4-180 - 3 pt. & PTO 1160 Hours - 3208 Cat Diesel - Only \$16,500



1973 Case 1370 - New 20.8x38 Rubber Only \$9950



Ford Major 4WD 3 pt. & P.T.O. Cheap 4WD Power \$3950

**CONSTRUCTION EQUIPMENT**

**CRAWLER DOZERS**

Cat D8 . . . . \$1950

**TRAILERS**

1969 Great Dane 35 ton detachable . . \$14,750  
 New 2X 4 Ton . . . 1350  
 New 3x6 Ton . . . \$2000

**FORKLIFTS**

Int 340 - 14' . . . \$5800  
 Yale 3000 Lb. . . \$3950

**CRAWLER LOADERS**

Cat 941 . . . . \$15,900  
 Cat 933 . . . . \$8750  
 JD 350 . . . . \$7500  
 Cat 977L . . . \$19,000

**BACKHOES**

Long 3 pt. Hoe-new . . . . \$4500  
 Long 5 in 1 w/cab. . . . \$15,900  
 3 Pt. Backhoe. . \$2400  
 IH Hoe Attach. \$1800  
 IH 3800 4WD w/Cab . . . . \$9500

**TRUCK TRACTOR**

1974 Ford Louisville Diesel . . . . \$7950  
 1979 GMC Cab Over . . . . \$22,500

**SKID STEER LOADERS**

Case 1740 Diesel . . . . \$5800  
 Case 1816 - 400 Hours . . . \$3500  
 Case 1845D \$7900

**LOG SKIDDER**

JD 440A-1970 \$8750  
 JD 401B-1975 \$6750  
 Orange Skidder \$5950  
 IH TD6 w/winch \$3850

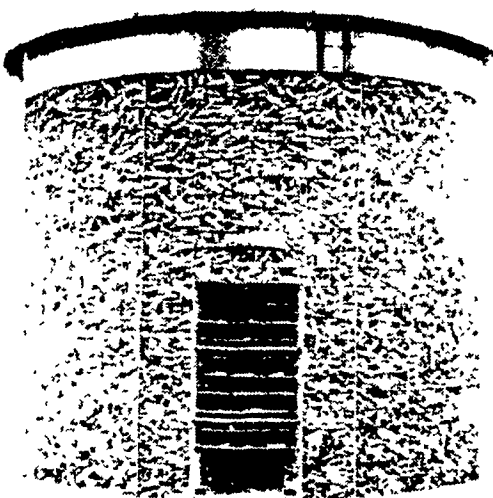
**MISC. CONSTRUCTION**

(40) Used hoe buckets . . From \$150  
 (25) Loader buckets . . From \$95  
 (30) Set forklift forks . . . . From \$300  
 (6) Winches . . Call  
 Adams Grader \$2000  
 Michigan 75 Loader . . \$5950

**CONSTRUCTION DUMPS**

(2) 1974 IH & Ford Diesels w/9' Bodies - Air Brakes \$11,900  
 1968 Ford 1 Ton \$3950

**SPEEDY 1200 BU. CORN CRIBS**



**BAR-LOK CONSTRUCTION**

- Cut Corn Crib Erection Time!
- Store More Corn For Less Money!
- No other corn crib goes up as fast or as easy as the Speedy Crib with roof rafters. This feature, plus Bar-Lok side panels, minimizes corn crib erection time.

**SPECIAL PRICE**

\$795.00 each  
 \$750.00 6 or more

\$200 per crib down payment will hold your crib till you need it and guarantee the price. Balance due on pickup of crib. Delivery available at extra charge. 900 bushel & 1700 bushel also available.

**12 BUSHEL CORN CRIB**

Ht. to Eaves . . . . .	14 ft.
Ht. to Peak . . . . .	20 ft.
35° Steep Pitch Roof . . . . .	1125 lbs.
Weight . . . . .	15 ft.
Diameter . . . . .	9 ft.
Roof Rafters . . . . .	26 ga.
Steel Roof . . . . .	6"x34"
Door Opening . . . . .	34"
Fill Ring Opening . . . . .	

**EASY TO ERECT!**



Step 1 — Bar Lok Construction saves you time - gives you a strong, sturdy crib. Crib wire panels are interlaced to form an eye. A 13"x3/8" rod is then inserted through the eye and pushed down to the foundation. Easy, simple, fast construction.



Step 2 — Rafters are bolted to assembled rafter ring. Now you're ready to put the roof panels on. Rafters assure you of proper roof panel placement the first time. No wooden framework to build.