

Lancaster Farming

VOL. 27 No. 40

Four Sections

Lancaster Farming, Saturday, August 7, 1982

\$7.50 per year

McCaffrey entry tops York Black & White Show



The Rodman Thompson family's Coredale Farms was named premier breeder of the York Holstein show. From left are dairy princess Nancy Eisenhart who presented the banner, Roy, Jane and Rod Thompson, daughter Shirley Trimmer, and judge Steve Mowry.

YORK — James and Holly McCaffrey, who just recently began dairying in southern York County on their Delta area farm, took home top honors in the York Black and White Show last Friday at the York fairgrounds.

Their four-year-old entry by Milu Betty Ivanhoe Chief, Stumpland Ivanhoe Chief Brenda, was named senior and grand champion by judge Steve Mowry, Roaring Springs. She was bred by Berks County breeders John and Rita Stump.

Following in the reserve placing was Kingway Nuez Max, David King's five-year-old 4-H entry by Kingway I Star Newton.

Top junior animal was C.E. Hubbard's winning senior yearling, topping the reserve junior winner shown by Bridgette Boyer, an intermediate calf that won junior honors the previous day at the 4-H Roundup competition.

The coveted premier breeder banner went to the Rodman Thompson family with their Coredale Farms entries. Sharing in a tie for the premier exhibitor honors were Beshore Farms, New Cumberland, and Bupplynn Farms, Seven Valleys. — J.B.

Show results are:

- Junior Calf**
 1 Sunnybend Honey Pete Valiant, sired by Straight Pine Elevation Pete, exhibited by Bridgette Boyer, York, 2 David King Delta, 3 Richard Bupp, Seven Valleys, 4 Philka Holsteins Thomasville, 5 Beshore Farms, New Cumberland
- Intermediate Heifer Calf**
 1 Sunnybend Sexy Glitter B Star sired by Ocean View Sexation, exhibited by Bridgette Boyer, York, 2 Patty Bupp, Seven Valleys, 3 Richard Bupp, Seven Valleys, 4 Beshore Farms New Cumberland, 5 Mike Krebs Glen Rock
- Senior Heifer Calf**
 1 Bupplynn Sexation Jill sired by Ocean View Sexation exhibited by Patty Bupp, 2 Coredale Farm East Berlin, 3 Lesley King Delta 4 Fremeyer Farm, Dover, 5 Robert Morris and David Stewart Delta
- Junior Yearling Heifer**
 1 Beshore Glendell Star Miranda sired by Glendell Arinda Chief, exhibited by C.E. Hubbard III, New Cumberland 2 Lesley King, Delta, 3 Philka Holsteins Thomasville, 4 MacIn Heaps and John Wilcox Farm Grove 5 Chris Wolf Abbottstown
- Senior Yearling Heifer**
 1 Koewaygon Creek Linnor Jean, sired by Creek Bluff Elevation Lester, exhibited by C.E. Hubbard New Cumberland, 2 Sunnybend Farm, 3 Lesley King, Delta, 4 Dana Doll, Glen Rock, 5 Debra Wolf, Abbottstown
- Junior Champion**
 Senior yearling heifer, C.E. Hubbard III
- Reserve Junior Champion**
 Intermediate heifer calf, Bridgette Boyer
- Junior Get of Sire**
 1 Kingway Farm, Delta, get of Kingway Elevation Very, 2 Coredale Farm, 3 Dar-Dale Farm, 4 Heaps & Kingway.
- Dry Cow 5 and Under**
 1 Indianvale Standout Stella, sired by Diamond S Pette Standout, exhibited by Bupplynn Farms, 2 Sunnybend Farm; 3 Beshore Farms, 4 Coredale Farm; 5 C.E. Hubbard, III.
- Dry, 6 and Over**
 1 Coredale Tiho Twinkle-Sky, sired by Tiho Kit

(Turn to Page A22)

Lancaster Co. draws statewide turn-out for PFA tour

BY DONNA TOMMELLEO
MILLERSVILLE — Two Master Farmers and a Pennsylvania Farmers' Association county president were the subject of the FFA's annual Farm Management and Business Analysis Service tour on Tuesday.

More than 300 Pennsylvanians turned out for the event and toured progressive farms near Millersville, Lancaster County.

In its 25th year of farm

management service, FFA chose the innovative operations of Star Rock Farms, a Holstein dairy owned by brothers John and Abe Barley, the Earl Newcomer beef farm and Funk's Farms and Greenhouses.

The Barley brothers welcomed the tour members on their first stop. Star Rock Farms, the largest registered Holstein herd in the nation includes more than 1,400

(Turn to Page A24)

At Lancaster's Fre-Lyn Farms

Awards mark Guernsey gathering

NOTTINGHAM — If Lancaster County farmers have been wondering what has been munching in their corn fields, County Agent Glenn Shirk solved the puzzle on Thursday.

"The fall armyworm...it's been devastating late corn," Shirk explained before a group of county Guernsey breeders during their annual field day.

However, Shirk added that mature corn will probably survive without much damage. Plantings for corn silage may warrant aerial spraying, said Shirk. He noted that helicopters already have begun spraying in the region and suggested that farmers contact their chemical company for more spraying information.

Shirk was one of several guests who addressed the Lancaster County Guernsey Breeders' field day at Fre-Lyn Farms, home of Fred and Eve Crider.

Newly-crowned dairy princess LuAnn Breneman pledged her

support for the dairy industry and offered an update on her promotional activities.

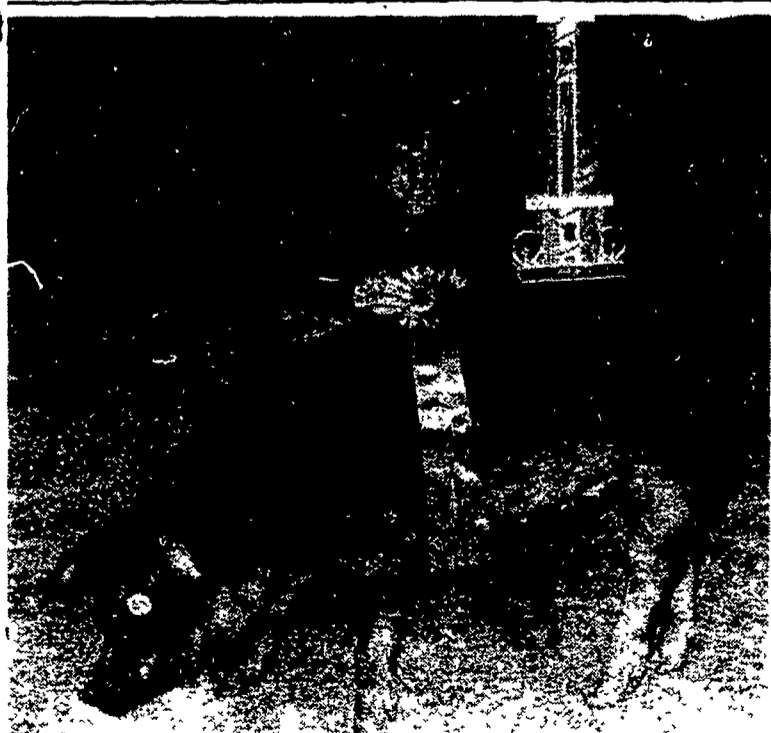
Then it was back to school as dairy feed specialist Donald J.

Mahlandt gave a brief lecture on feeding the growing heifer. Mahlandt urged the breeders to examine their goals and strive to

(Turn to Page A28)



The field day judging contest, Thursday, provided entertainment and for these Guernsey enthusiasts, it also offered awards. Field day winners are from left, kneeling; K.D. Linde; Chris Shumaker; Gerald Harnish; second row; LuAnn Breneman; Ginger Myers, Thelma Garber, and Millie Linde; top row, Judy Rohrer and Janice Garber.



In her final year of competition, Judy Zimmerman, of Cloister Chapter, Ephrata, shows her Duroc-X to grand championship of the Lancaster FFA Market Hog Show. Show story and results are on Page B20.

Reminder

Ag Progress Days is right around the corner and Lancaster Farming is gearing up to honor the annual event with a special issue, coming out Saturday, August 21. Inside this issue, subscribers will receive a full schedule of events, an exhibitor list and a map of where to go and what to see. Also featured will be stories on several demonstrations and daily events. Advertising deadline for this special issue is Monday, August 16.