

Pa. food processing is No. 1

LANCASTER — We're number one! Pennsylvania, supported by 61,000 family farms, is the top ranked state in the nation in food processing.

According to latest reports from the Pennsylvania Department of Agriculture, Pennsylvania is now ranked first in the nation in the

manufacturing and processing of mushrooms, pretzels, potato chips, sausage, scrapple, and unsweetened condensed milk.

Pennsylvania is second in the nation in all frozen dairy products, ice cream and ice milk; third in the

(Turn to Page B15)

August is Pennsylvania Food Products Month

HARRISBURG — A major effort to increase consumer awareness and promote sales of Pennsylvania food products was announced by State Agriculture Secretary Penrose Hallowell, recently.

"August has been designated as Pennsylvania Food Products Month," he said. "The state's agriculture, agribusiness and related food industries will be joining to promote Pennsylvania foods across the state in retail stores, farm markets, malls, fairs and special events."

Hallowell said this was the first time such an effort has been planned to promote all Pennsylvania food products at one time. "The 'We're Growing Better' logo campaign is gaining recognition among consumers and the industry alike," he said. Pennsylvania agriculture is a \$25 billion industry which plays a major role in our efforts to boost economic development.

According to Hallowell, "Representatives of our agricultural industries suggested

the idea of setting aside a month for such an educational effort. August was selected as an appropriate time, when the bounty of Pennsylvania's fruit and vegetable harvests are at a peak.

"Last year, sales under the logo campaign totaled nearly \$200 million. This year we hope to improve that figure and make a concentrated effort to acquaint Pennsylvania consumers with the great diversity and availability of Pennsylvania grown and processed foods," he said.



Pa. Livestock

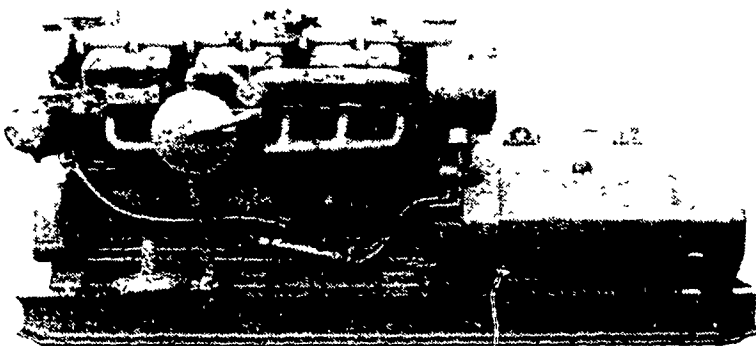
| PRODUCT | TOTAL PRODUCTION | VALUE OF PRODUCTION | PER CAPITA CONSUMPTION | PEOPLE SUPPLIED | PERCENTAGE OF PA'S POPULATION SUPPLIED |
|----------------|------------------|---|------------------------|-----------------|--|
| BEEF | 470,000 | Production of Beef & Veal total - \$309,863,000 | 78 lbs. | 3,864,000 | 32.5% |
| VEAL | 295,000 | | 1.7 lbs. | 14,674,000 | 100+236% |
| PIGS | 1,255,000 | 134,847,000 | 69.1 lbs. | 2,516,000 | 21% |
| LAMBS & MUTTIN | 54,000 | 3,151,000 | 1.4 lbs. | 1,801,903 | 15 |
| CHICKEN | 553,674,000 | 154,000,000 | 51.2 lbs. | 8,651,155 | 72.9% |
| TURKEYS | 5,680,000 | 48,500,000 | 10.6 lbs. | 8,144,906 | 68.6% |
| EGGS | 4,268,000,000 | \$213,000,000 | 282 eggs | 15,135,000 | 100+27.5% |

Pa. Fruits and Vegetables

| PRODUCT | TOTAL PRODUCTION | VALUE OF PRODUCTION | PER CAPITA CONSUMPTION | PEOPLE SUPPLIED | PERCENTAGE OF PA'S POPULATION SUPPLIED | NATIONAL RANKING |
|--|--------------------|---------------------|----------------------------|-----------------|--|------------------|
| FRUIT | | | | | | |
| APPLES | 400,000,000 lbs. | \$ 44,400,000 | 25.5 lbs. | 15,686,275 | 100+32% | 6th |
| PEACHES | 65,000,000 lbs. | 11,440,000 | 10.2 lbs. | 6,372,549 | 53.7% | 5th |
| PEARS | 3,000 tons | 912,000 | 4.3 lbs. | 1,395,349 | 11.8% | 8th |
| Total Fruit (incl. tart & sweet cherries & grapes) | | \$ 72,090,000 | | | | |
| VEGETABLES | | | | | | |
| SNAP BEANS | 17,000,000 lbs. | \$ 4,216,000 | 7.9 lbs. | 2,151,899 | 18% | 6th |
| SWEET CORN | 86,900,000 lbs. | 10,776,000 | 14.96 lbs. | 5,808,824 | 49% | 4th |
| CABBAGE | 54,700,000 lbs. | 4,896,000 | 8.8 lbs. | 6,215,909 | 52% | 10th |
| TOMATOES | 57,600,000 lbs. | 8,467,000 | 32.6 lbs. (fresh & canned) | 1,766,871 | 15% | 6th |
| Total Veg. (excluding potatoes) | | \$ 38,878,000 | | | | |
| POTATOES | 525,000,000 lbs. | \$ 34,125,000 | 62 lbs. | 8,467,741 | 71% | 13th |
| MUSHROOMS | 237,463,000 lbs. | 147,531,000 | 2.5 lbs. | 94,985,200 | 100+700% | 1st |
| EGGS | 4,268,000,000 eggs | 213,000,000 | 282 eggs | 15,135,000 | 100+27.5% | 3rd |

CONVERT WASTE INTO CASH

Waste products on your farm have the potential energy to produce electricity. This power can be used to operate your farm and you can sell your surplus to the Power Company!



This generator set will run on gas derived from:

- Poultry Manure
- Cow Manure
- Pig Manure
- Wood Chips
- Saw Dust
- Garbage
- City Sewage
- Natural Gas Wells

We build switch gears that enable you to sell power to the power company automatically, when you have surplus, and automatically draw from the power company when you need it.

MARTIN MACHINERY

P.O. Box 35
Martindale, PA 17549
215-445-4585

Please send me more information

Name _____

Address _____

Phone _____

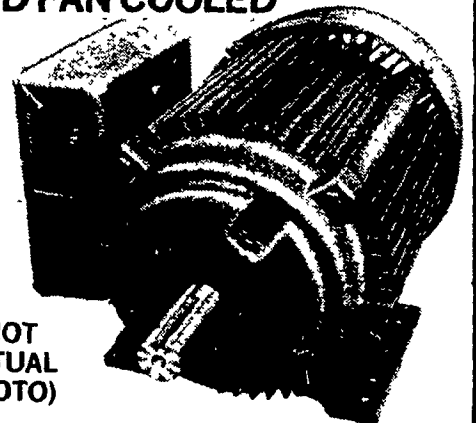
MARTIN MACHINERY
P.O. Box 35, Martindale, PA 17549

SHOP & FARM DUTY, SINGLE PHASE ELECTRIC MOTORS

1750 R.P.M. TOTALLY ENCLOSED FAN COOLED

- 1 H.P., 143 Frame \$116.20
- 1.5 H.P., 145 Frame \$152.60
- 2 H.P., 145 Frame \$201.60
- 3 H.P., 184 Frame \$240.00
- 5 H.P., 184 Frame \$299.60
- 7.5 H.P., 215T Frame \$434.00
- 10 H.P., 215T Frame \$525.00

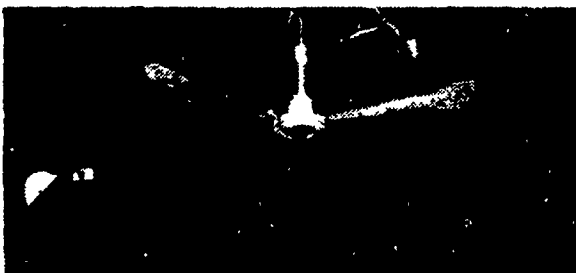
(NOT ACTUAL PHOTO)



BLUE BALL MACHINE WORKS

BOX 176, RT. 322 BLUE BALL, PA 17506 - PH: 717-354-4478

A CEILING FAN FOR ALL SEASONS



SPECIFICATIONS:

Ceiling fan model - CF56; Description - 56" vertical downward thrust fan; No. of speeds - 5 speed or variable; CFM air delivery - 19,200; Max. RPM - 285; Floor area affected - 1800 sq. ft.; Max. air velocity - 750 ft./min.; Volts - 110; Watts - 95; Gross weight - 24 lbs.

CEILING FANS are industrial quality all metal units of sturdy construction, attractively designed and finished in baked white enamel. The combination of the aerodynamic blade design — quality sealed for life bearings — and the reliability of the capacitor start motor with overload protection, provide one of the most cost-efficient means of air circulation possible. These fans are completely maintenance free.

SWINE SYSTEMS SPECIALISTS

FARMER BOY AG. INC.

457 E. MAIN AVE. MYERSTOWN, PA. 17067

PH. 717-866-7565

BEST IN DESIGN, PRICE AND EXPERIENCE