

FARM EQUIPMENT

FARM EQUIPMENT

FARM EQUIPMENT

FARM EQUIPMENT

FARM EQUIPMENT

FARM EQUIPMENT

FARM EQUIPMENT

**HYDRAULIC REPAIRS  
CYLINDERS • JACKS  
PUMPS • CAB JACKS**

**BEARTOWN HYDRAULICS**  
New and Used Equipment  
Narvon, PA

Rt. 322 Midway  
between Honey Brook & Blue Ball  
Phone 717-354-5649



**USED COMBINES:**

- |   |  |
|---|--|
| 1979 MF 760 V8 w/new 18' grain head hydro AC                    | 1977 MF 510 w/13' grain head & 44 corn head AC         |
| 1979 MF 750 w/13' grain table & 63 corn head hydro AC           | 1971 MF 510 w/13' grain head & 44 corn head            |
| 1978 MF 750 w/13' grain head & 63 corn head hydro AC            | 1974 White 8600 w/13' grain hd & 4 row corn            |
| 1977 MF 750 w/14' grain head & 63 corn head hydro AC            | 1976 NH 1400 hydro AC 13' grain head & 4 row corn head |
| 1978 MF 540 w/13' grain head & 43 corn head AC                  | NH 975 w/13' grain head & 2 or 3 row corn head         |
| 1977 White 8800 13' grain head w/4 or 6 row corn head hydro AC  | Oliver 525 w/11' grain head & 2 row corn head          |
| 1974 MF 760 hydro AC 14' grain head 63 corn head & 63 corn head | IH 205 w/10' grain & 2 row corn head                   |
|   | MF 510 gas 11' grain head                              |
|   | MF 410 gas w/10' grain head & 4 row corn head          |

**USED TRACTORS:**

- MF 65 gas 1960 MF TO 35 w/loader

**USED PLANTERS:**

- JD 1240 Plateless liquid or dry JD 494 A 4 row  
White 5400 4 row no till dry fert. IH 56 4 row  
IH 400 cyclo no till 4 row

**USED INDUSTRIAL:**

- IHC 3616 backhoe loader MF 200 crawler-loader

**USED HAY & FORAGE EQUIP.**

- IH 46 baler IH 55 forage harvester  
MF 200 forage harvester w/corn head & pickup w/2 row corn & pickup  
IH 50 forage harvester w/2 row corn & pickup

**MISC. USED EQUIP.**

- JD 33 spreader JD disc harrow  
MF 15 grinder mixer

**NEW COMBINES:**

- White 9700 Axial flow MF 540  
MF 860

**NEW TRACTORS:**

- |                                    |                 |
|------------------------------------|-----------------|
| White 4-210 tractor loaded         | MF 285 w/cab AC |
| White 2-105 special price (loaded) | MF 265          |
| White 2-45                         | MF 230          |
|                                    | MF 210-4        |
|                                    | MF 205          |

**NEW MISC.**

- |                                      |                                |
|--------------------------------------|--------------------------------|
| Fox 6354 4 WD self-propelled chopper | Taylorway hyd tolding disk 15' |
| Brady 1800 tolding chisel plow       | MF 820 hyd tolding disc 15'    |
| Brady 3270 tolding field cultivator  | MF 725 haybines                |
|                                      | MF 120 baler w/thrasher        |
|                                      | Allied grain dryers            |

**FORAGE SPECIAL!**

One new MF 200 harvester w/pickup head & 1 row corn head.

List - \$7455

**SALE \$5400**

Waiver of Finance Applies

**GUS FARM EQUIPMENT, INC.**



Intersection of  
Routes 616 & 214  
Seven Valleys, PA  
(717) 428-1967

Used 1977 K2 Gleaner combine w/cab, monitor, 10' grain head, 2 row corn head, excellent \$18,000  
Gleaner E combine, cab, 10' grain head, 2 row corn head \$5,000  
H4 AC bulldozer w/hydraulic angle blade \$6,500  
430 IH baler \$1,000  
990 IH haybine \$1,200  
1290 JD haybine \$2,200  
676 NH manure spreader w/hydraulic end-gate \$1,800  
NI 2 row picker sheller \$5,000  
NI 2 row picker \$5,000  
New 238 NH 12 ton running gear, 11L15 tires and tubes \$1,650  
New 892 NH forage harvester w/flotation tires, heavy duty 1,000 RPM PTO shaft, long tongue and screen \$9,500

**FARNSWORTH SUPPLY**

103 Cemetery Street  
Hughesville, Pa. 17737  
717-584-2106

**SPECIAL OF THE WEEK**

**20% OFF  
CALF  
HUTCHES**

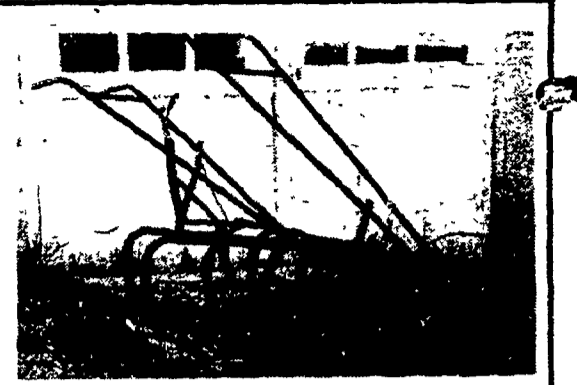
**EQUIPMENT FOR SALE OR LEASE**

**BADGER**  
3,000 gal. liquid manure tank  
1,500 gal. vacuum tank  
205 Bushel Manure Spreader  
Forage Wagons  
Forage Blowers  
Bedding Chopper for Mulching  
Persuader Pump agitator for Lagoons  
Handy High Pressure Washers



Oswalt Mix Wagons  
Grain Drill with band seeder  
Also:  
Registered Holstein Bulls

**SHOW-EASE STALL CO.**  
573 Willow Rd. Lancaster, Pa.  
Ph: 717-299-2536



1 - Horse cultivator with small single tree  
**\$90.00**

Push type cultivator adjustable with changeable shovels  
**\$45.00**

Bolts, Nuts & Washers  
Special now thru Aug. 7  
**89¢ lb.**

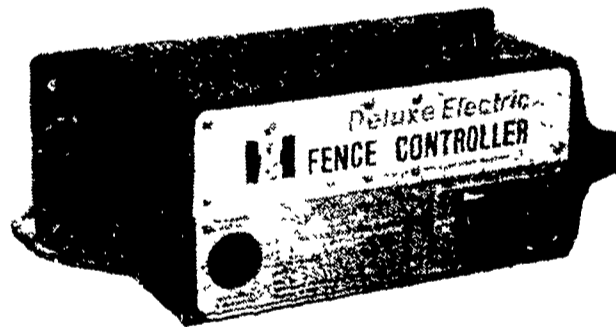
**GIDEON KING**  
#1 Gap, Pa. 17527  
1 mile Northwest of White Horse

**PARTS MART**

**Farm'n  
Ranch  
sale**

**ELECTRIC FENCE**

**A SHOCKING DEAL - 25% OFF**

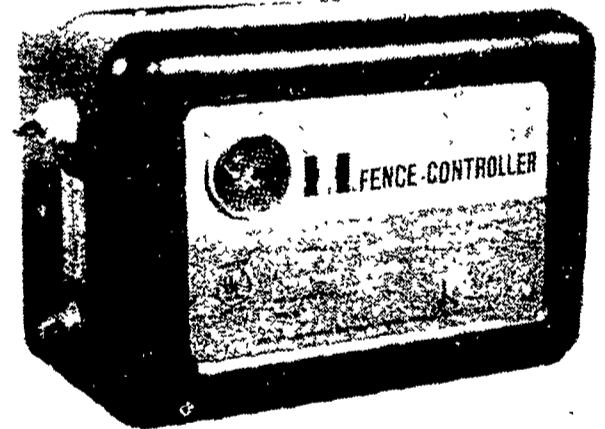


**DELUXE ELECTRIC MODEL**

- This is a top-of-the-line fence controller.
- Replaceable circuit boards and transformers.
- Complete with built-in lightning arrestor and replaceable fuses. • Signal lamp indicates the strength of the shock on the fence line. The brighter the light, the stronger the shock. If the light is completely off, the line is shorted out.
- Completely electronic-solid-state. • No moving parts. • Operates on 120 volts, 60 cycles AC.
- Non-burning shock; approximately 55 shocks per minute. • Works extremely well on a heavily weed-grounded fence, even in wet weather.
- Ground indicator light flashes if the controller is not adequately grounded. • Peak secondary current: 2 amps. • Peak secondary voltage: 12,000. • Size: 11½x7x5". • Net weight: 5 pounds. • U.L. listed. • Part number: 1131 918 R1.

Reg. \$63.00

**SALE \$47.25**



**DELUXE PORTABLE MODEL**

- This unit operates off a 6-volt battery. It has a battery compartment that will house a standard 6-volt "hot shot" battery. • Approximately 50 shocks per minute. • Shock duration 1/40 second.
- Signal lamp shows the strength of the light, the brighter the light, the stronger the shock. If the light is completely off, the line is shorted out.
- Peak secondary current: .4 amp. • Peak secondary voltage: 10,000. • Size: 11¼x8x6. • Net weight: 10 pounds. • U.L. listed. • Part number: 1131 921 R1.

Reg. \$50.00

**SALE \$37.50**

ALL NEW & USED PRODUCTS BACKED BY HOOBER PARTS & SERVICE

Radio Controlled Trucks For Better Service



**C.B. HOOBER & SON, INC.**

INTERCOURSE, PA

(717) 768-8231

AUTHORIZED UPS-STATION

