

## National FFA

(Continued from Page A22)

or livestock to working in agribusiness.

"But in recent years with the widening of the scope of FFA to include more students with non-production farm backgrounds, it has become more difficult to adapt such a program.

"The workshop will re-emphasize the importance of SOE and let participants exchange ideas on how they conduct their programs.

"Since the Lancaster and surrounding area is such a good diversified agricultural region and the FFA programs there are excellent, it was selected for the tour."

Upon arrival in Lancaster

County, the visitors will be divided between Victor F. Weaver, Inc. and Sperry New Holland. At the two farms, the groups will tour facilities and discuss ways to better prepare ag students for work in agribusiness.

They will then be broken down into the small SOE groups and visit the schools of their local host vo-ag teachers and accompany them in contacts with several of their FFA students at the location of their projects.

After the visitations, they will return to the Leola Family Restaurant, where a panel of teachers, administrators and a representative of the National FFA Office will review reaction.

The day-long program will conclude with the dinner attended by Secretary Scanlon and other state educational and agricultural officials.

### Phillips directs

### U.S. rural development

WASHINGTON, D.C. — Willard (Bill) Phillips, Jr., has been named director of the Office of Rural Development Policy in the U.S. Department of Agriculture, according to Under Secretary Frank Naylor, who supervises small community and rural development programs in USDA.

The Office of Rural Development Policy is the Department of Agriculture's focal point for rural development policy coordination. The office reports to Under Secretary Naylor. A primary responsibility of the staff is to gather recommendations from the rural public and state and local government officials for national rural development policies and strategies. Secretary Block will use these recommendations in developing a national rural development strategy report that will be submitted to the Congress in January 1983 and then updated annually, in accordance with the Rural Development Policy Act of 1980.

Phillips, who had been acting director since February, came to ORDP in November 1981 as deputy director. Before that he was assistant for congressional affairs at the Appalachian Regional Commission. He also has served in the Department of Commerce with the Economic Development Administration and worked as Administrative Assistant to former U.S. Reps. Wilmer (Vinegar Bend) Mizell of North Carolina and Robert W. Kasten, Jr., of Wisconsin (now U.S. Senator) and Rep. Don Ritter (R-Pa.).

Phillips was born in Elkins, West Virginia, and has served as an elected member of the Elkins City Council. He is a graduate of Potomac State College at Keyser and of West Virginia Wesleyan College in that state.



## DIXON... MATCHING OF THE DOLLAR DAYS

EXTRA SAVINGS UP TO \$125.00  
SEE YOUR PARTICIPATING DIXON DEALER FOR FULL DETAILS



Prove it to yourself, ask for a free demo from one of these participating dealers:

#### PENNSYLVANIA

##### ADAMS CO.

**GOLDEN RIDGE**  
York Springs, PA 17372  
(717) 528-4343

##### BERKS CO.

**JOHN'S MOWER SERVICE**  
Bernville, PA 19506  
(215) 488-1944

##### J.R. SALES & SERVICE

Fleetwood, PA 19522  
(215) 944-7571

##### TRUSTY'S LAWN & GARDEN

Sinking Spring, PA 19608  
(215) 777-4578

##### CENTRE CO.

**PENNWOOD CORPORATION**  
Pleasant Gap, PA 16823  
(717) 373-4580

##### CHESTER CO.

**STOLTZFUS FARM SERVICE**  
Cochranville, PA 19330  
(215) 593-2407

##### CLINTON CO.

**GUMMO MARINE**  
Mill Hall, PA 17751  
(717) 726-4551

##### DAUPHIN CO.

**WILLIAM N. MASIMER**  
Hershey, PA 17033  
(717) 534-1398

##### FRANKLIN CO.

**GETTELS FARMS**  
Shippensburg, PA 17257  
(717) 532-9271

#### LANCASTER CO.

##### A & N ENGINE SERVICE

Narvon, PA 17555  
(717) 768-3227

##### LAWN CARE OF PA

Martindale, PA 17549  
(215) 445-4541

##### J.B. HOSTETTER & SONS

Mount Joy, PA 17552  
(717) 653-1841

##### WAYNE B. HOTTENSTEIN

Manheim, PA 17545  
(717) 898-7794

#### LEBANON CO.

##### BLUE MOUNTAIN ENTERPRIZE

Jonestown, PA 17038  
(717) 865-2994

##### MARTIN'S HARDWARE & EQUIP.

Newmanstown, PA 17173  
(717) 949-6817

#### LEHIGH CO.

**KERMIT K. KISTLER, INC.**  
Lynnport, PA 18066  
(215) 298-2011

#### LYCOMING CO.

**CLARK'S FARM SUPPLY**  
Williamsport, PA 17701  
(717) 494-0660

#### MONTGOMERY CO.

**R.L. MARTIN CO.**  
Limerick, PA 19468  
(215) 489-2597

#### NORTHUMBERLAND CO.

**YOCUMS MOTOR SPORTS**  
Milton, PA 17847  
(717) 742-4706

#### SCHUYLKILL CO.

**MARLIN SCHREFFLER**  
Pitman, PA 17964  
(717) 648-1120

#### UNION CO.

##### BENDER'S SALES & SERVICE

Mifflinburg, PA 17844  
(717) 966-1373

#### YORK CO.

##### HENRY HARTMAN

Hanover, PA 17331  
(717) 637-3741

##### NEUMAN EQUIP. CO.

Dover, PA 17315  
(717) 292-2101 or 5255

#### MARYLAND

##### CARROLL CO.

**RAINBOW FARM SUPPLY**  
Taneytown, MD 21787  
(301) 751-1500

##### RIDGE CABINET SHOP

Mt. Airy, MD 21771  
(301) 875-2211 or (home) 875-2147

#### MONTGOMERY CO.

**PROMOWER INC.**  
Rockville, MD 20850  
(301) 948-6920

#### WASHINGTON CO.

**VALLEY CYCLERY**  
Hagerstown, MD 21740  
(301) 739-7710

## We Specialize In

## Chain Link Dog Kennels and Insulated Dog Boxes

## Commercial and Residential Chain Link Fencing & Supplies

## We Install or Do It Yourself

Write For Free Literature and Prices Mfg. & Sold By

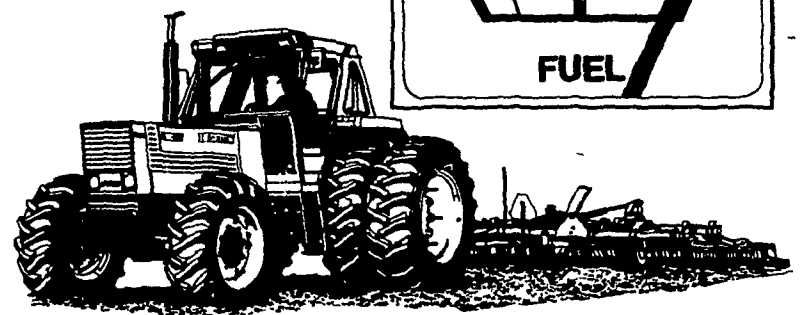
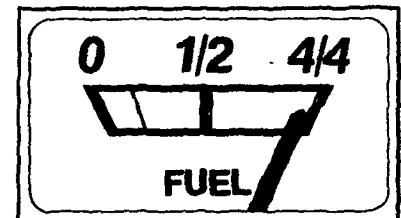
## LAPP'S PET SUPPLY

RD 1 Box 428, New Holland, PA 17557  
3 mi. north of Good's Furniture  
717-354-4374 ans. service

NO SUNDAY SALES

See Us Fridays at the Green Dragon

Here's one of the best ways to "gauge" a Hesston tractor.



One of the easiest ways to gauge tractor fuel economy is right on your dashboard. To put it simply, a Hesston tractor stays full longer.

We offer Hesston's full range of fuel-efficient diesel powered tractors... from 42 to 162 PTO hp.

And they're all available with 4-wheel drive. This center-line 4WD can be used full time...letting you do more work with less horsepower and with less fuel.

## HESSTON JULY SPECIALS

Retail options include Finance Charge Waiver or Low Rate Financing or Trips to National Finals Rodeo or Cash Rebates

<b>Hesston 480-8 4 WD</b> 42 H.P.	
List Price	\$18,835
July Cash	- \$6,335
Discounts	\$12,500

<b>Hesston 480-8</b> 42 H.P.	
List Price	\$14,617
July Cash	- \$5,217
Discounts	\$9,400

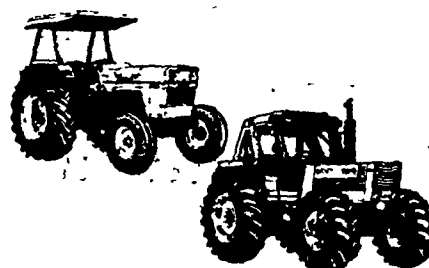
<b>Hesston 580 4 WD</b> 50 H.P.	
List Price	\$22,866
July Cash	- \$8,266
Discounts	\$14,600

<b>Hesston 780 4 WD</b> 70 H.P. (Demo)	
List Price	\$28,321
July Demo Special	- \$13,321
	\$15,000

<b>Hesston 980</b> 90 H.P. Cab and Air 18.4-34 PAVT and 1000-16 Tires	
List Price	\$34,915
July Cash	- \$12,115
Discounts	\$22,800

<b>Hesston 1880 DT 4WD</b> 160 H.P. 20.8-38 - 16.9-28 Cab and Air AM/FM Stereo	
List Price	\$61,970
July	
Discounts:	- \$22,070
	\$39,900

<b>Hesston 4800 Big Baler</b>	
List Price	\$58,610
July Demo Special	- \$13,610
Baled 200 bales	\$45,000



## STOLTZFUS FARM SERVICE

Cochranville, Pa.  
215-593-2407

HESSTON

The PRIME LINE

If there is no dealer in your area call Lawn Care Distributors - 215-445-4542