

LOYSVILLE — Dairymen looking to improve their herd's milking performance through better balanced rations may find welcome help in a recent addition to Kreider's Mill. Mark Kreider, owner, has opened a forage testing lab at the mill.

Since last fall, Kreider's Mill has offered this service to dairymen across Perry and surrounding counties, which has proven a great success.

As most area dairymen know, forage testing is not a new revolution in the industry, but having a lab so close to home is

Kreider said he saw a great need for a local lab about two years ago when the region's hay crop failed. He said that most dairymen were buying truck loads of hay and needed forage test results quickly if they were to maintain production levels.

Time was crucial, but it was impossible to get the results quickly when the forage samples had to be sent 300 or more miles away to a testing lab. Once a sample was sent, it took approximately two to three weeks to receive the results. By then, the

dairymen were feeding a different load of hay.

"We constantly knew where we were two weeks ago," Kreider said.

Kreider realized there was a significant problem with this system of send-away forage testing and devised a solution. John Nimmons, a sale representative for the mill with a degree in biology from Shippensburg State College, had the ability and knowledge to run a testing lab. So, with the technician at hand, Kreider established a forage testing lab at the mill and had it

ready for use in November, 1981.

Nimmons first step in the testing process is collecting the forage sample from the farmer. Once at the lab, he weighs the forage, giving him a standard to gauge his results. Now, the forage is ready

for the oven. The forage is placed in a specially designed forage drying oven to remove all the moisture. After drying, the forage is broken down into a fluid substance with the use of acids and heat. With the forage in a fluid

state, different chemical dyes are added to determine the levels of protein, calcium and phosphorus. Nimmons uses a spectrophotometer to find the measurements of each nutrient.

Since November, Nimmons technical ability and speed in processing the tests, one to two

days, has dairymen testified to him. Roth his forage without testing from stated the



Dave Roth, of Milmay Farms, is a firm believer in forage testing program conducted by Kreider's Mill. All hay fed to his Perry

County herd is tested so that it can be nutritionally balanced into the overall dairy ration.



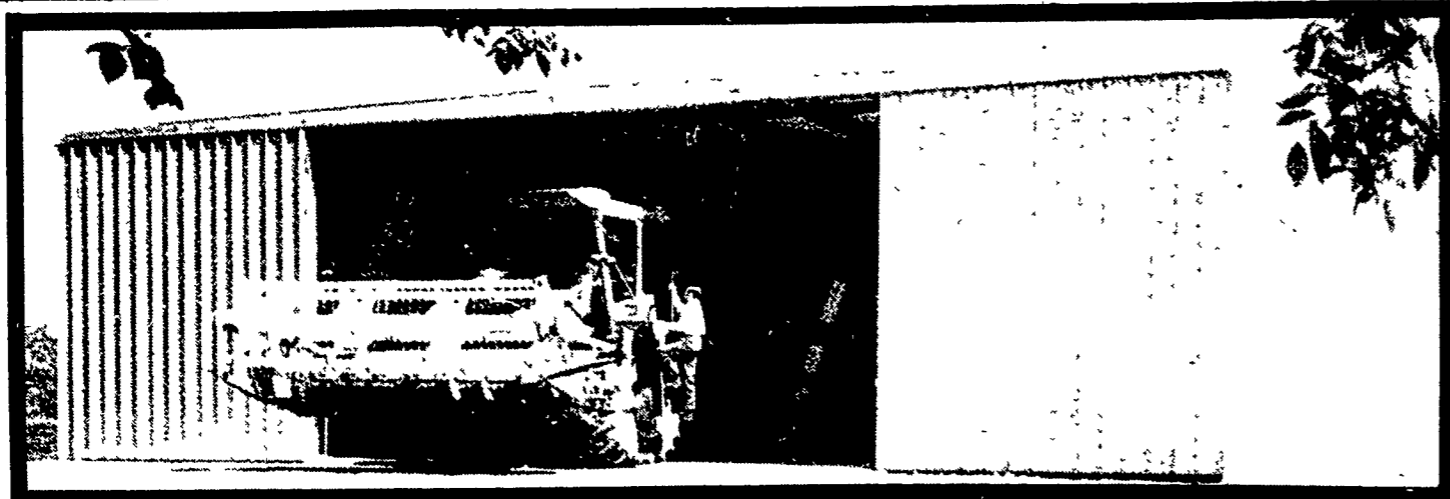
Lab technician, John Nimmons, tests forage sample at Kreider's Mill in Loysville.



Monthly DHIA records, which show ration program, are reviewed by Thom Farms, and Bob Laisdale, District Pt them is Dum's daughter, Meranda.

Farmstead Buildings by Butler

ASK YOUR AGRI-BUILDER FOR HIS SPECIAL PRICES OF BUILDINGS AND BINS



FARMSTEAD® I - Building Engineered For Farmer Erection

***FREE *AERATION SYSTEM**
Includes aeration tube, fan, and air entrance kit. F.O.B.
See Your Agri-Builder For Details



***FREE AERATION SYSTEM**

WRITTEN WARRANTY
SEE YOUR AGRI-BUILDER FOR DETAILS!

LEASE IT...
See Your Agri Builder For Details

- * VARIOUS SIZES HEIGHT AND WIDTH AVAILABLE
- * THESE BUILDINGS ENGINEERED FOR SELF ERECTION (Butler will furnish Erection and Foundation Drawings)

BUY OR LEASE

LEASE BUILDINGS & BINS ON MONTHLY PROGRAM

BUTLER MFG. CO.

Attn. P.E. Hess
Box 337, Oxford, PA 19363
Dealer Inquiries Available in: Pennsylvania Counties: Armstrong, Indiana, Erie, Crawford, Warren, Elk, Cameron, McKean, Clinton, Lycoming, Sullivan, Wyoming, Luzerne, Columbia, Butler, Mercer, Lawrence, Beaver, Bradford, Susquehanna, Adams, Cumberland, York, New Jersey Counties - Sussex, Morris, Passaic, Atlantic, Cape May, Burlington, Ocean, Monmouth, Mercer, Middlesex, Somerset Maryland Counties - Kent, Queen Annes, Talbot, Dorchester.
No Dealer Fees.

Name _____
Address _____
County _____ Zip _____
City _____ State _____
Phone _____
(Include area code) LF

* All Butler buildings **SOLD** for grain storage

Bethlehem 20 YEAR WARRANTY

More good news when specified as roofing or siding. Galvalume is warranted, under exposure to normal atmospheric conditions, for a period of twenty years against rupture, perforation, or structural failure.

KNOXVILLE CONSTRUCTION
Knoxville, Pa. 16928
PH: 814-326-4188

LEROY E. MYERS, INC.
Route #1, Box 163
Clear Spring, Md. 21722
PH: 301-582-1552

D. E. SMITH, INC.
Mifflintown, Pa. 17059
PH: 717-436-2151

POGO INC.
1841 Jerry's Road
Street, Md. 21154
PH: 301-692-5350

FOUR COUNTIES CONTRACTOR
R.D., Box 249
Coalport, Pa. 16627
PH: 814-672-5751

M.W. HOOK CONSTRUCTION
R.D. #2, Box 163
Peach Bottom, PA 17563
PH: 717-548-2615

TRI-COUNTY AGRI-SYSTEMS
R.D.#1, Box 5
Swedesboro, NJ 0
PH: 609-467-31

C & M SALES INC.
R.D.#1
Honesdale, Pa. 18431
PH: 717-253-1612

ORVILLE MACK
P.O. Box 47
Nazareth, Pa. 18064
PH: 215-759-1331

W.R. MOODY, CONTRACTOR
113 Walnut Lane
West Newton, PA 15089

O. A. NEWTON & SON CO.
Bridgeville, Delaware 19933
PH: 302-337-8211

TRI-STATE MARINE DIST. INC.
Route 256
Deale, Md. 20751
PH: 301-867-1447

KELLER BUILDING SYSTEMS INC
R.D. #1 Box 203
Lewisburg, PA 178
PH: 717-524-0561