

Livestock market and auction news

Lancaster Farming, Saturday, July 24, 1982—A15

Omaha Cattle

Thursday, July 22

Report Supplied by USDA

CATTLE: Through midweek slaughter steers and heifers 1.00-1.50 lower. Cows 1.00-1.50 lower. Bulls steady.

A bearish trade led the fed cattle market lower through the week, in

spite of very modest day-to-day receipts. Although many buyers exhibited a need for additional live inventory, most operated cautiously and were very selective in their purchases. Continued large discounts on good grade and light weight carcasses in the dressed trade forced similar reductions on their live counterparts. However,

some price support was afforded good to low Choice steers, 950-1050 lbs. by purchases for return to feedlots; a situation not apparent locally in some time.

Steers made up 49 percent of the week's receipts: Heifers 37 percent, cows 7 percent, feeder 5 percent. Four day receipts 7856, last week 8741, a year ago 11.

STEERS: Earlier in week 9 loads Choice few Prime 2-4 1125-1250 lbs. 67.50-67.75, 1 load 68.50. At the close Choice 2-4 1050-1225 lbs. 65.50-66.50, 3 loads 67.00-67.25. Mixed Good and Choice 2-3 1000-1150 lbs. 64.00-65.50. Few goods 63.00-64.00.

HEIFERS: Earlier in week several loads Choice and few

Prime 950-1050 lbs. 65.25-65.50. At the close Choice 2-4 925-1025 lbs. 63.00-64.50, part load 65.00. Mixed Good and Choice 2-3 900-1025 lbs. 61.00-63.00. Few Good 59.00-61.00.

Average of LS 214 detailed quotations for Choice 900-1100 lb. steers 65.85; 1100-1300 lbs. 66.95. Average cost steers 65.73, average weight 1108 lbs. as compared 66.47 and 1115 lbs. a week ago. Average cost heifers 63.13, average weight 986 lbs., as compared 64.11 and 964 lbs. a week ago.

COWS: High Cutter, Utility and Commercial 1-3 40.50-42.00. Some High Dressing to 43.00. Cutter 39.00-40.50. Canner and low Cutter 37.00-39.00.

BULLS: 1-2 1100-1800 lbs. 48.00-52.00. Few high dressing 53.00-54.00.

FEEDERS: Medium Frame 1 steers in good to low Choice slaughter flesy 950-1050 lbs. 64.00-64.50.



Move Up To bobcat...

The Leader In Diesel

Performance and Reliability

Featuring

KUBOTA, DEUTZ or Perkin's Engines

• Choose from 10 different diesels in 7 different sizes.

300 SERIES

313 Bobcat - Kubota liquid cooled diesel. 500 lb. operating capacity, only 36" wide, also available in gas.

500 SERIES

543 Bobcat - Isuzu liquid cooled diesel. 800 lb. operating capacity, 6' high, 48" wide, hydraulics & lights standard, also available in gas.

600 SERIES

641 Bobcat - Deutz air cooled diesel.
643 Bobcat - Kubota liquid cooled diesel. 1000 lb. operating capacity, up to 36" dump reach, 13 gallon fuel tank, also available with a Ford liquid cooled gas engine.

700 SERIES

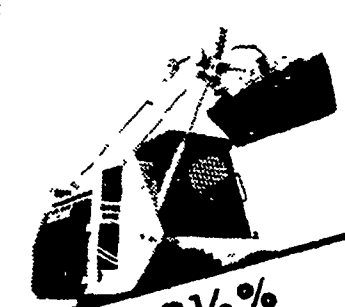
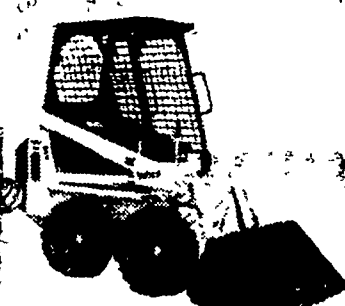
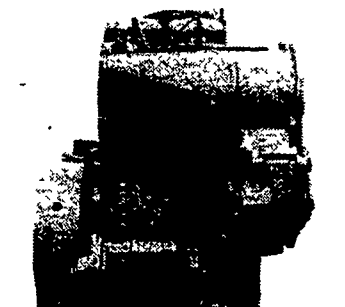
741 Bobcat-Deutz air cooled diesel.
743 Bobcat - Kubota liquid cooled diesel. 1300 lb. operating capacity, also available with a Ford liquid cooled gas engine.

800 SERIES

825 Bobcat - Perkins liquid cooled diesel. 108 cu. in. 1500 lb. operating capacity.
843 Bobcat - Perkins liquid cooled diesel. 156 cu. in. 1700 lb. operating capacity.

900 SERIES

947 Bobcat - Perkins liquid cooled diesel.
975 Bobcat - John Deere liquid cooled diesel. 3700 lb. operating capacity.



13 1/2% Financing Until July 31st

CLARK BOBCAT DEALERS

Let Us Demonstrate A Diesel

Carlisle, PA
PETERMAN FARM EQUIPMENT
717-249-5338

Chambersburg, PA
CLUGSTON IMPLEMENT INC.
717-263-4103

Drums, PA
HIGHWAY EQUIPMENT & SUPPLY CO.
717-788-1127

Somerset, PA
BENDER IMPL. INC.
814-443-4611

Honey Grove, PA
NORMAN D. CLARK & SON INC.
717-734-3682

Martinsburg, PA
BURCHFIELD'S INC.
814-793-2194

Myerstown, PA
SWOPE & BASHORE INC.
717-933-4138

Palm, PA
WENTZ FARM SUPPLIES INC.
215-679-7164

Centre Hall, PA
DUNKLE & GRIEB
814-364-1421

Quarryville, PA
GRUMELLI'S FARM SERV.
717-786-7318

Airville, Pa.
AIRVILLE EQUIP., INC.
717-862-3358

Harrisburg, PA
HIGHWAY EQUIPMENT & SUPPLY CO.
717-564-3031

Tunkhannock, PA
BARTRON FARM SUPPLY
717-836-3740

Mill Hall, PA
DUNKLE & GRIEB
717-726-3115

Statington, PA
SCAT ENTERPRISES INC.
215-767-1711

Collegeville, PA
MID-ATLANTIC EQUIP.
215-489-1400

SANDBLASTING REPOINTING WATERPROOFING

From repairing drafty, leaking walls to complete stucco removal and repointing, exterior restoration or farmhouses is our specialty!

REASONABLE RATES JAMES H. DOSTER

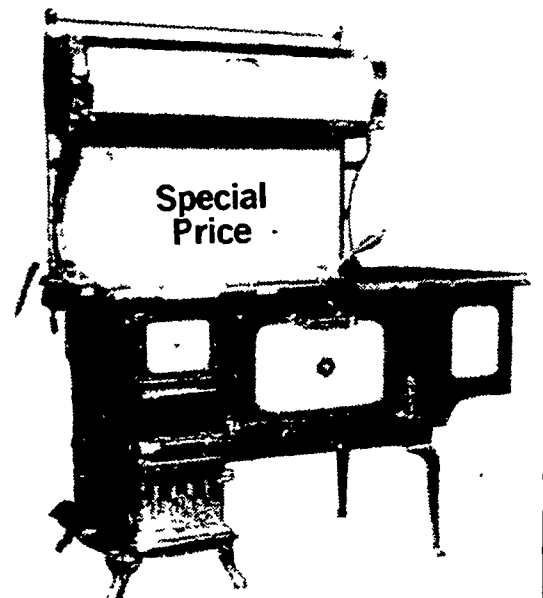
507 South Spruce Street
Lititz, Pennsylvania 17543

For information or a free estimate, return coupon below.

Name _____
Address _____
City _____ State _____ Zip _____
Phone: Area _____
Directions to your home: _____

EL-MAR-I STOVES

Specializing Only in Cook Stoves



Orders Being Taken For
March or April Delivery

"Give Us A Try Before You Buy"

DANIEL'S FARM STORE

Animal Health Supplies &
Livestock Equipment
Located between Leola & Talmage along Rt. 772
RD 1, Leola, Pa. 17540
717-656-6982