

# York County DHIA

(Continued from Page D16)

Meivin R Lehr	3	3-8	305	18,837	3 /	695
30	3	3-0	305	21,683	3 /	808
32	3	2-10	305	19,864	4 0	802
21	3	3-5	305	16,621	3 3	550
Horace E Heindel	3	3-2	296	15,068	3 6	539
51A	3	4-8	305	13,112	4 1	537
73A	3	2-8	305	16,118	3 5	567
Carl Anderson	3	2-5	305	14,744	3 6	538
35	3	8-2	305	14,568	4 3	622
136	3	4-5	291	15,126	3 6	547
John H Doll Sr	3	5-8	305	16,707	3 5	580
Meg	3	3-11	305	18,507	3 2	587
Wayne L Sweitzer	3	6-2	305	15,302	4 0	611
10JJ	3	8-6	305	15,671	3 7	583
Jamie	3	3-6	305	15,909	3 9	618
9	3	2-6	305	17,633	3 6	642
64	3	6-8	305	16,824	3 9	648
Kenneth L Rexroth	3	5-1	305	15,633	3 3	515
47	3	5-1	298	16,657	3 3	555
Richard E Stough	3	4-8	305	17,227	3 4	586
Harriet	3	5-11	305	14,846	4 3	641
Star	3	4-4	305	15,333	4 1	622
Rick L Cook	3	4-5	305	14,365	3 5	508
Pencil	3	4-3	305	16,775	3 9	649
J Donnell Taylor	3	3-11	295	14,817	3 8	567
Silvia	3	4-3	305	15,147	3 5	530
Lady	3	4-2	305	15,798	3 4	544
Ray	3	2-10	305	14,485	3 7	543
Spam	3	3-1	305	14,574	4 0	585
Joyce	3	0-0	305	17,696	3 1	555
Fawn	3	2-10	305	14,238	4 2	603
Erma	3	2-10	305	15,256	4 1	621
Sally	3					
Jix	3					
June	3					
Shine	3					
Alice	3					
Apple	3					
Bonnie	3					
Shonna	3					
Louise	3					

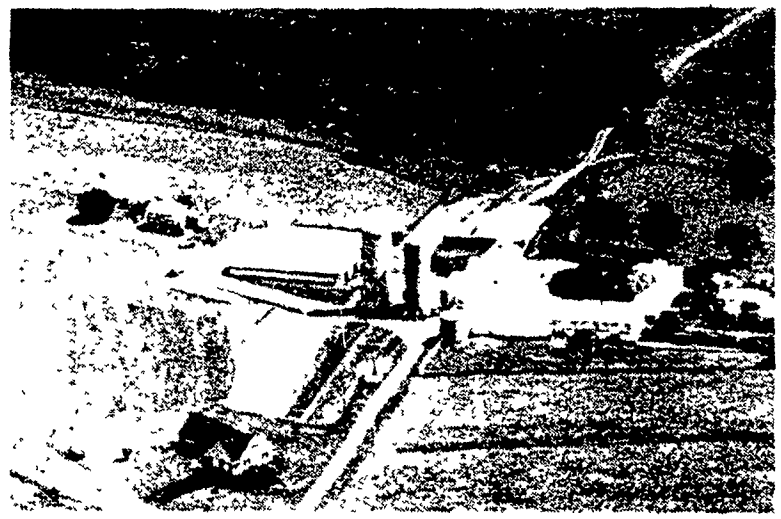
Bupplynn Farms Farm2	3	2-10	299	13,341	3 8	511
69	3	8-2	272	17,114	3 5	607
Elvin G Molison	3	3-3	305	19,971	3 4	673
80	3	6-1	305	16,584	3 3	554
43	3	4-0	256	15,136	3 7	558
Daryl L Bair	3	2-5	305	13,565	3 7	504
Maryjo	3	8-8	305	14,370	4 3	611
Ruthie	3	5-3	305	18,249	3 2	578
Nolita	3	5-7	305	12,220	4 8	691
John D Adams	2	6-9	270	13,455	4 0	540
26	2	7-2	305	17,875	4 1	733
65	2	3-8	305	11,716	5 3	620
Honeycrest Fm	2	3-11	305	12,113	5 4	650
Banna	2	2-0	302	12,517	4 2	529
Terry	2	2-0	305	10,280	5 2	530
46	2	4-10	305	10,167	5 0	507
Opie	2	3-2	305	13,949	4 2	591
Lucky	2	3-1	305	12,036	4 6	557
Faith	2	3-6	305	15,724	3 8	599
HJackie	2	3-10	298	16,570	3 6	603
Mervin W Hertzler	3	7-4	305	17,901	3 2	566
Regina	3	3-3	305	14,464	4 1	587
Bonnie	3	5-1	305	20,331	3 1	638
Carolyn	3	3-3	305	14,277	3 8	537
Leonard W Greek	3	2-3	305	16,938	3 9	654
Stacy	3	2-1	305	14,354	3 9	557
Dew	3	2-1	305	14,232	3 7	532
Gary W Thoman	3	4-2	305	18,009	4 1	746
9	3	2-9	305	14,719	3 5	510
R & M Farms	3	4-2	271	14,955	3 4	504
2	3	4-8	305	18,060	3 1	551
Laverne & Judith Hess	3	4-9	258	14,871	3 9	581
13	3					
Edwin L Calhoun	3					
97	3					
Belle	3					
Barb	3					
Eugene B Taylor	3					
Tamara	3					
Robert W Mays	3					
19	3					
431	3					
David L & Chris Druck	3					
25	3					
59	3					
82	3					

15 B	3	2-1	305	14,848	3 8	569
Dale L Barshinger	3	4-10	295	16,339	3 4	562
7	3	3-1	305	15,881	3 4	538
10	3	3-0	305	12,899	4 4	572
57	3	3-7	305	13,999	3 7	522
85	3	1-10	305	15,649	3 7	583
Albert Neuteid	3	2-0	305	15,206	3 5	526
7	3	4-8	305	19,066	3 5	666
95	3	6-11	305	22,049	3 5	773
93	3	6-9	305	17,209	3 2	557
85	3	7-5	288	16,988	3 2	551
Big T. Holsteins	3	2-2	305	16,436	3 2	522
Pet	3	4-9	289	17,240	3 4	584
Yvette	3	6-9	294	16,435	3 5	579
45	3	5-8	298	15,559	3 6	560
28	3	3-0	305	19,137	3 2	612
Walkers Farm	3	2-2	305	16,354	3 1	515
205	3	7-8	305	19,556	3 0	577
415	3	4-11	272	12,462	4 5	560
50	3	7-8	305	18,539	3 2	591
217	3	4-11	241	14,849	3 6	537
13	3	5-8	305	16,151	3 5	558
Leland Stantord	3	7-8	305	19,599	3 5	679
17	3	3-8	305	18,873	4 3	810
55	3	5-9	305	15,026	3 3	501
99	3	4-8	305	17,881	3 1	549
Perrydell Farms	3	4-10	252	19,913	3 1	615
31	3	3-0	305	15,705	3 8	599
73	3	2-2	305	14,576	3 7	546
132	3	2-2	305	17,491	3 5	608
137	3	2-3	305	13,119	4 2	551
148	3	6-5	305	21,500	3 9	829
207	3	8-2	305	17,453	3 2	560
225	3	3-5	305	17,453	3 2	558
37	3	3-5	305	14,235	4 4	631
20	3	3-8	305	15,041	3 7	554
27	3	3-0	305	13,918	4 2	580
52	3	2-4	305	14,298	3 8	542
David Stewart	3	3-9	305	12,412	4 3	536
Bridget	3	2-3	305	18,030	3 3	595
Alexa	3	4-0	305	15,272	3 6	554
Gross	3	3-0	305	16,412	3 1	516
Sibyl	3	3-8	305	21,235	2 7	575
Gypsy	3	5-2	290	17,223	3 1	531
Victory	3	6-5	290	19,034	3 4	646
Cara	3	5-4	305	19,034	3 4	646
Richard Staner	2					
Jean	2					
Walnut Hill Farm	3					
Barbara	3					
Daisy	3					
Kitty	3					
Olivia	3					
Viva	3					
Fawn Meadow Holstein	3					
39	3					

(Turn to Page D20)

## Aerial Photography of

- Farms
- Businesses
- Homes
- Land



Don't Buy Any Enlarged, Mounted and Framed Photographs Until You've Seen Ours!

- ✓ Superior Quality
- ✓ Sizes & Prices to meet any budget

True natural color. For the good look, we use Kodak paper.

### Our Local Representatives

- |  |  |
|--|--|
| Peter Shea<br>Lebanon, PA<br>717-274-0117      | Jonas Miller<br>Leola, PA<br>717-656-7959      |
| John Albrecht<br>Lancaster, PA<br>717-397-5418 | Richard Trach<br>Lancaster, PA<br>717-394-2790 |

## Von Marie Aerial Service Inc.

3020 Elkhart Road Goshen, IN 46526  
219-533-8219

"We Specialize in Aerial Photography"

- Currently working in 9 states
- Inquiries invited

For more info. and a free sample just clip & mail this coupon.

Name \_\_\_\_\_  
 Address \_\_\_\_\_  
 County \_\_\_\_\_ Phone \_\_\_\_\_

Farm size & type       Business  
 Home       References Requested

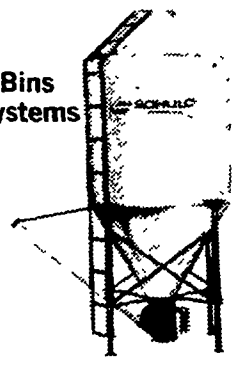
## Quality Building Systems

7 KEENER RD., LITITZ, PA. 17543  
PH: (717) 626-5204

### YOUR RELIABLE BUILDER

- DAIRY • BEEF • SWINE • POULTRY
- HORSE BARN • ALL PURPOSE BUILDINGS

Schuld Bins & Feed Systems



Cablevey Feed Systems

### BUILDING SPECIAL

60' Wide by 120' Long Building  
As Low As \$3.00 per Sq. Ft.

Treated Wood Silage and Feed Carts



Fiberglass Feed and Silage Carts



Manual Battery & Motor Powered Silage Wagon



All Carts Available With 10", 13", or 16" Wheels

8"x24" Reversible Blade Barn Scraper



Rugged Mineral & Salt Feeder



10", 13" & 16" Swivel Casters & Wheels



Round, 3 Section, Slant Bar Hay Saver



## SCENIC ROAD MANUFACTURING

3539 Scenic Road Gordonville, Pa. 17529  
3 Mi. So. West of New Holland, 2 Mi. No. of Intercourse

See on Display at Green Dragon Farmers Market Every Friday

DEALER INQUIRIES WELCOME

DELIVERIES AVAILABLE

or Contact Your Nearest Dealer

AARON S. GROFF & SON  
Ephrata, PA  
717-354-4631

LAPPS HARDWARE & DAIRY SUPPLIES  
Box 96 Loop Road  
RD #4 Quarryville, PA

ROBERT GUTSHALL  
Womelsdorf, PA  
717-933-4616

DANIEL S. STOLTZFUS  
Narvon, PA  
717-354-4374

ATLEE F. REBERT  
Littlestown, PA  
717-359-5863

FARM BUREAU  
Souderton, PA  
215-273-4355

GERALD L. YODER  
Rd. 2, Box 10  
Belleville, PA 17004

EDGAR DICKENSHEETS  
New Windsor, MD  
301-775-2909

IRVIN J. PEACHEY  
Belleville, PA  
717-483-6714

CHESTER INGRAM  
Belleville, PA  
814-383-2798

VALERIE B. HARTMAN  
Dansville, N.Y.  
716-335-2697

CLIP & SAVE THIS AD