

York Co. DHIA

(Continued from Page D14)

Albert Dehoff	B3	136	7	87.0	14370	539	
John H Doll Jr	B3	34.1	87	8	15605	530	
Carl Anderson	B3	52.9	82.0		13925	530	
Desota & Robt Burchett	G3	108	8	87.4	14615	527	
Furnace Creek Farm	3	114	8	86.5	15032	524	
Deal Holsteins Farm	B3	101	2	86.6	13830	521	
Philip R Stambaugh	3	57	6	88.0	13724	515	
William H Fantom	B3	63	7	85.0	13888	515	
Jacob Brubaker	B3	53	2	86.6	14894	515	
Wayne L Sweitzer	B3	74	6	87.3	14483	513	
R & M Farms	G3	36	4	85.1	13252	511	
John C Krone	B3	41	5	86.9	14470	510	
Bupplynn Farms Farms 2	B3	63	0	84.3	14206	507	
Robert Buser	B3	77	6	84.6	14349	506	
Albert Neufeld	B3	110	7	81.2	13661	504	
David V Thompson	BB	83.3	80	4	12895	500	
Eugene B Taylor	B3	46.2	88	0	13722	498	
Dennis L McWilliams	3	59.9	83	5	14970	498	
Tom McMillon	B3	53	5	79	3	14036	497
Gary W Thomas	3	43	0	82	8	13690	496
Dale & Daria Doll	B3	73.3	86	3	14951	496	
Elwood T Krick	B3	82.2	90	2	13336	493	
John D Adams	B3	74	9	86	3	13352	490
Donald Lanjus	B2	86	9	85	1	10417	488
Robt Baumgardner Jr	B3	51	5	81	6	13538	487
Doug & Gene Kilgore	B3	59	5	84	8	13018	486
Elvin R Deiter	B3	62	8	83	2	13578	486
David L & Chris Druck	B3	73	1	75	6	15089	485

David Gemmill	B3	56	4	88	2	12821	483
Charles Herr & Son	B3	48	4	84	1	13242	482
Richard Staner	2	66	1	85	8	10961	481
Fawn Valley Farm	B3	71	2	83	8	13071	475
Ramsey S Cooper Jr	B3	65	6	83	9	13083	472
Palmer McWilliams Jr	B3	37	8	82	5	12955	468
Donald Wilson	B3	43	2	87	1	12535	466
Ronald Stein	B3	60	5	79	7	12868	463
D Fantom & E Gordon	B8	53	4	89	1	11512	456
Dale Clymer	B3	68	5	81	7	12776	453
Charles Hess	B3	108	5	83	1	12129	449
Fred Kimmel	3	14	4	85	9	12506	445
My-T Farms	B3	44	8	76	8	11732	439
Robert J Reheard	B3	41	5	83	2	12520	439
Laverne & Judith Hess	B3	61	0	80	4	11947	429
Emory & Wm Kilgore	B3	68	5	84	7	11571	416
Clarence E Bange	B3	54	5	83	0	10915	398
Jacobs & Stambaugh	B3	55	2	76	8	10281	366

OWNER	NAME OR NUMBER	BREED	AGE	DAYS IN MILK	LBS. MILK	% FAT	LBS. FAT
Geo Knight							
Donna	3	6-6	305		21,052	4.1	866
Goldie	3	6-4	261		13,905	4.1	565
43	3	4-10	305		20,969	3.8	791
174	3	4-5	305		15,322	3.4	520
267	3	7-5	305		22,270	3.3	742
44	3	3-10	305		18,468	2.8	525
ET-58	3	2-8	305		15,342	4.3	656
ET-53	3	2-8	305		15,246	4.0	606
Fawn Valley Farm							
Lorna	3	7-7	305		17,301	3.7	633

Lancaster Farming, Saturday, July 24, 1982-D15

Lady	3	6-8	305		18,672	3.5	658
20	3	5-0	305		18,778	3.6	669
David V Thompson							
93	3	8-2	305		18,559	3.8	696
P17	3	4-6	305		13,717	3.9	535
William H Fantom							
Ruth	3	9-10	305		16,430	4.1	668
43	3	5-3	305		14,657	4.0	593
Angie	3	3-11	305		15,193	3.9	595
Ellis Crowl							
W 15	3	9-0	284		15,958	3.4	544
B 101	3	4-9	288		20,478	2.8	575
118	3	3-11	305		18,469	3.4	619
128	3	3-7	283		14,011	3.6	508
113	3	4-4	305		17,736	3.1	555
21	3	3-8	289		15,396	3.4	519
R 15	3	5-10	301		15,198	3.4	524
Rutter Bros							
Lucy	2	6-8	305		10,978	5.0	553
Star	2	4-8	305		10,965	4.7	513
Betsy	2	3-4	305		9,654	5.7	551
Beshore Farms							
Lucy	3	4-9	305		17,582	3.2	571
Harold Brown							
Misty	3	2-5	305		12,930	4.7	609
Violet	3	2-4	305		14,618	3.7	539
Bell	3	2-2	305		13,016	4.2	544
Stacy	3	2-4	305		15,974	4.0	631
Gum Tree Farm							
Zoe	3	6-7	305		21,440	3.4	724
Dimples	3	2-10	305		14,628	3.6	523
Albert Dehoff							
167	3	6-7	305		14,766	3.6	538
345	3	2-2	305		13,879	4.0	550
347	3	1-10	305		14,905	3.4	504
Elwood T Krick							
Promise	3	9-8	305		14,891	3.6	538
J Rose	8	11-6	305		13,891	4.1	569
The J E Baker Co							
14	3	6-1	305		20,180	3.7	743
30	3	2-5	305		15,436	3.9	607
31	3	2-7	305		13,418	3.9	525
Fred Sprengle							
Hen	3	2-4	289		13,705	4.1	564
Flute	3	2-7	305		15,701	3.4	533
Gloria	3	2-11	305		17,880	3.8	681
Doug & Gene Kilgore							
Licker	3	5-9	305		13,601	4.0	538
Thomas A Boyer							
Esther	3	2-2	305		15,310	4.1	631

(Turn to Page D16)

Sealcrete can paint your farm buildings quickly and inexpensively...

Call for Free estimate

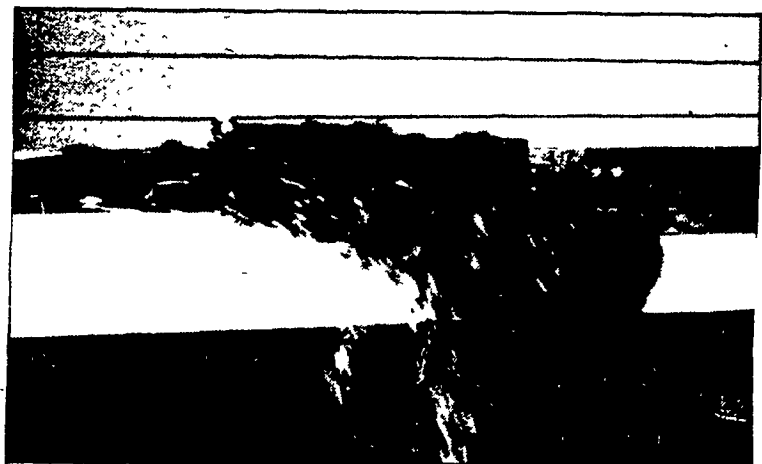


Contact Allen B. Shirk

Seal Crete, Inc.
RD2, Ephrata, PA
717-859-1127

HYDRAULIC AERIAL EQUIPMENT

Patz BELT FEEDER



For fast, reliable feeding plus... easy maintenance and low investment.

- High Volume
- Simplicity Plus
- Continuous-drive Plow
- Mounts Left or Right Side
- One Motor—No Reversing Switches
- Installs Quickly

"Affordable automatic feeding with Patz dependability."

DISTRICT MANAGER

GEORGE HEATH 472 Woodcrest Dr. Mechanicsburg, PA 17055
717-737-0002

Contact Your Nearest Patz dealer

ALEXANDRIA
MAX ISENBERG
814-669-4027

HAMBURG
SHARTLESVILLE
FARM SERVICE
215-488-1025

TERRE HILL
TERRE HILL
SILO CO. INC.
215-445-6736

BALLY
LONGACRE
ELECTRIC
215-845-2261

LEBANON
MARVIN J. HORST
DAIRY EQUIPMENT
717-272-0871

MARYLAND DEALERS
HAGERSTOWN, MD
TRI-STATE
FARM AUTOMATION
301-790-3698

BEDFORD
BENCE FARM
EQUIPMENT
814-623-8601

MILTON
LANDIS FARMSTEAD
AUTOMATION
717-437-2375

KENNELDYVILLE, MD
PINDER SERVICE CO.
301-348-5263

BELLEVILLE
MACLAY & SON
717-935-2101

PIPERSVILLE
MOYER
FARM SERVICE
215-766-8675

LINEBORO, MD
WERTZ GARAGE, INC.
301-374-2672

CAMP HILL
LLOYD SULTZBAUGH
717-737-4554

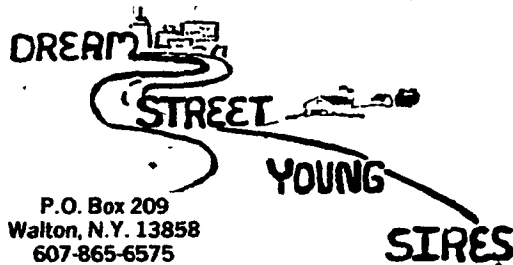
QUARRYVILLE
UNICORN FARM
SERVICE
JAMES E. LANDIS
717-786-4158

NEW WINDSOR, MD
ROOP FERTILIZER
& CHEMICAL
301-775-7678

CHAMBERSBURG
CUMBERLAND FARM
& DAIRY INC.
717-263-1965

STREET, MD
P & S EQUIPMENT,
INC.
301-452-8521

DREAMWORLD - TO - PROFIT



P.O. Box 209
Walton, N.Y. 13858
607-865-6575

Where tomorrow's Sires are bred today

Hill Top Hanover C Dreamworld



By Bootmaker (EX-94 GM)
1/82 PD +1263M +35F

His Maternal Sister by Elevation

Winter Place Elevation Gale (VG-89 at 2y)
2-4 319d 2X 24,001 4.7% 1125 (Inc.)

Poverty Hollow Citation Shirley (2E-95 at 6y)
4-5 350d 2X 23,376 4.7% 1108
5-6 365d 2X 26,508 4.1% 1086

2nd Dam-Poverty Hollow Lad Shirley (2E-91-GM)
10-3 360d 2X 26,079 4.7% 1229 (Inc.)

Sire: Lockway Sovereign Lucifer Lad (VG-GM)

Maternal Brothers to Lad Shirley
Milestone PD +1472M +30F +1.10T
Demand PD +2172M +28F +.71T

3rd Dam-Cochran Ivanhoe Shirley (2E-94-GD)

Reserve All-American 3-Yr-Old, 1966
7-9 365d 28,361 3.2% 918

DREAMWORLD is just one of our many outstanding pedigreed young sires that have semen available.

We also have a wide variety of service bulls available at all times.

Contact us or your local representative for more information

William Cittenley
Eastern Pa. Sales Rep.
Cochranville, Pa. 19330
R.D. 1 (215) 593-5550

Frey Myers
Western Pa. Sales Rep.
Box 50 Alma, New York 14708
Office (607) 865-6575
Home (716) 928-1965