

Martin

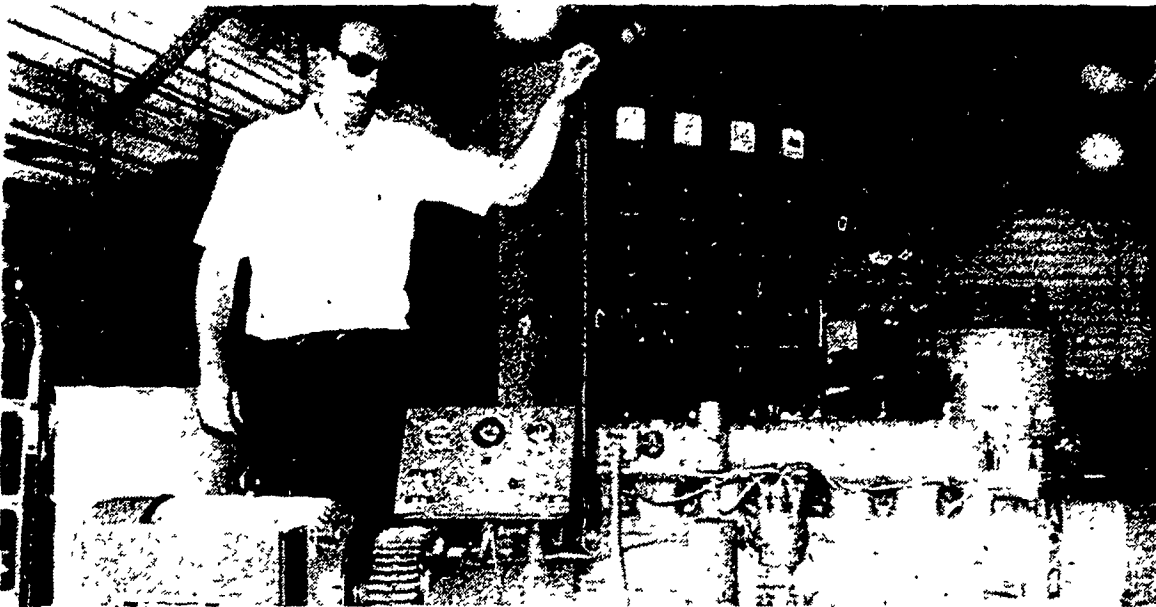
(Continued from Page D6)

two, depending on the availability of the methane on the farm. The parallel system also automatically sends power into the

utility grid when excess electricity is being produced on the farm and draws power from the grid during times it may be needed.

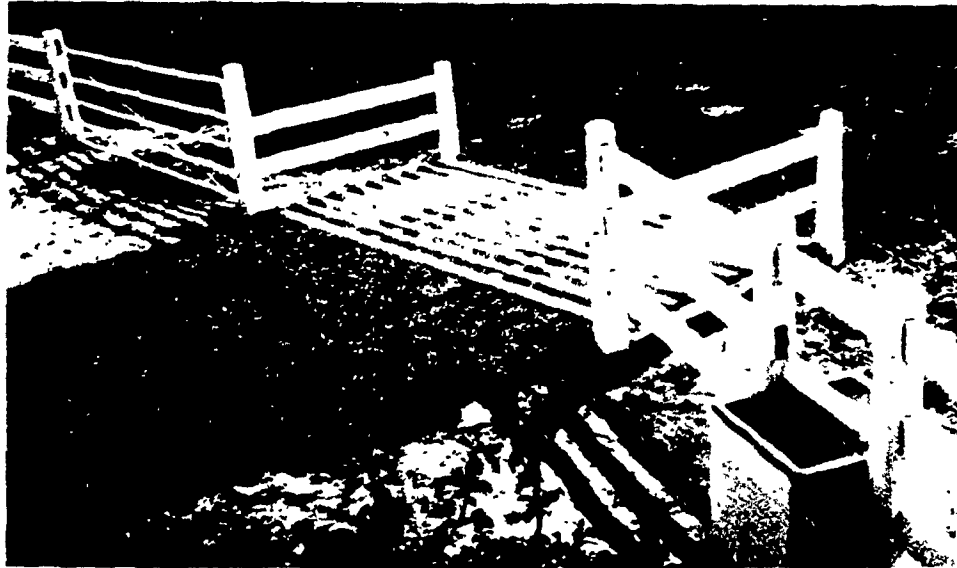
"The generator is now no longer the major factor in a methane system," Martin said. "While other improvements will likely come, the basic bugs are now out of the generator and it is cost effective for the farmer. "What is needed now is more research and development by colleges and universities on the methane portion of the system to guarantee a continuous supply of

gas." The Leonard Martin Co., 330 Fonderwhite Road, manufacturers primary and standby generating systems not only for farms, but for mining operations, saw mills and for export. A number of units are being built for the Middle East and being shipped to countries such as Egypt. The Martin Co. builds units up to 1,000KW capacity.



Leonard Martin, of Iona, Lebanon County, is shown with 15 KW generating unit which his company has built for dairy operation in New York state. The generator, which can be operated off methane or LP gas, features a squirrel cage-type motor, which helps to make it cost effective for agricultural operations.

The Concrete Choice of Farmers for 21 Years SMITH CATTLEGUARD® Farm Products



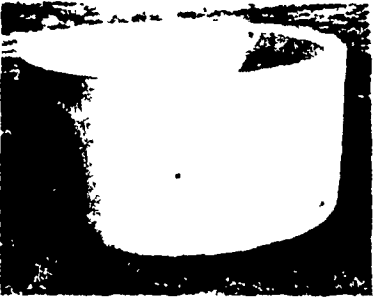
The Smith Cattleguard - No. 1 in the country. Save the time and energy of opening and closing gates.



Fenceline Feed Bunk - Smooth surface, rounded corners for less waste



Centerline Feed Bunk - Adaptable to all types of overhead feeding systems



Stock Tanks - Approved by Soil Conservation Service for a clean, reliable water supply



Freeze-Proof Waterer - No outside source of energy required to keep water ice-free, even in sub-zero temperatures

- All products feature:
- Durable Precast Concrete
 - Steel Reinforcement
 - Simple Installation
 - Low Maintenance
 - High Quality

All products available from stock

12 Ft. Cattleguard	\$395
14 Ft. Cattleguard	\$425
16 Ft. Cattleguard	\$450
Freeze-Proof Waterer	\$250
F.O.B. Plant	

Licensed by FASISFT Industries

Please send me free information on:

Cattleguards Feed Bunks Freeze Proof Waterers Stock Tanks

LF 7/18/82

Name _____

Address _____

City _____ State _____ Zip _____

Phone _____

CONCRETE SAFETY SYSTEMS™

Route 1095

Bethel, Pa. 19507

(717) 933-4107



TRACTOR TIRES

MUST SELL FOR CASH

9.5x24, 4 ply	\$82.00
11.2x24, 4 ply	\$95.00
11.2x28, 4 ply	\$113.00
12.4x28, 4 ply	\$125.00
13.6x28, 6 ply	\$155.00
13.6x38, 6 ply	\$191.15
14.9x28, 4 ply	\$158.00
14.9x38, 6 ply	\$224.00
15.5x38, 6 ply	\$220.72
16.9x34, 6 ply	\$250.00
16.9x38, 6 ply	\$275.00
18.4x38, 8 ply	\$364.12
20.8x38, 8 ply	\$530.00
20.8x34, 6 ply	\$450.00
18.4x34, 6 ply	\$289.00
18.4x34 8 ply	\$325.00
16.9x30, 6 ply	\$224.00
18.4x30, 6 ply	\$262.00
14.9x28, 6 ply	\$173.00
13.6x28, 4 ply	\$140.00
16.9x28, 6 ply	\$220.00

We Will Give You Good Trade For Used Tires

* Above tires are original equipment type, Federal Tax is included in above price.

WAGON SPECIALS

11Lx15, 8 ply Firestone	\$50
12.5Lx15, 8 ply Firestone	\$70
9.5Lx15, 8 ply Firestone	\$48

TRUCK SPECIALS

1000x20 Firestone No. 1	\$175.00
1000x20 Radial (Armstrong)	\$235.00

RADIAL TRACTOR TIRES

Call Us For Special Spring Prices!



DUALS AT DEALER PRICES

WE INSTALL TIRES

IN:

NEW JERSEY

MARYLAND

NORTHERN PENNSYLVANIA

Allow 2 weeks For Installation Plus Normal Service Fee

MUMMAU'S FIRESTONE

Mount Joy, PA
717-653-1260