



# WENGER'S INC.

OVER 140 TRACTORS  
SOLD THIS YEAR

251 SOUTH RACE STREET  
MYERSTOWN, PA 17067

DAYS:  
717-866-2135

PHONE:  
NIGHTS:  
717-866-7147

OR:  
717-273-9089

### TRACTORS

#### FARMALL TRACTORS

- Cub w/Fast Hitch - Nice . . . \$2000
- 1086 ROPS - Nice . . . \$13,700
- 1066 Cab - Black Stripe . . \$10,900
- 856D WF - 3 Pt. . . . . \$8950
- 100 Hydro w/Rops . . . . . \$7950
- Super M - Extra Nice . . . . \$1950
- F20 w/Loader - 1 Owner. . . \$1000
- Cub w/Cultivator . . . . . \$2000
- 966 Hydro . . . . . \$7950
- M w/NI MTD Picker . . . . . \$3950

#### JOHN DEERE

- 4430 Cab - Air - Syncro . . . \$17,500
- 4020 Cab - Nice . . . . . \$9500
- 4520 - Nice . . . . . \$9800
- 4320 ROPS - WTS. . . . . \$11,000
- 4320 . . . . . \$11,500
- 5010 . . . . . \$6500
- (2) 730D - WF - 3 Pt . . . . \$3700
- 620 . . . . . \$2500
- 2020D . . . . . \$5500
- 820 - 2 Cylinder . . . . . \$2900
- 720 Gas . . . . . \$2500
- 401B - 1975 w/Winch - Nice. \$6750
- (2) JD 830 - 2 cyl. . . . . \$4500

#### CASE

- 1370 - 20.8x38's . . . . . \$9950
- 1070 Cab - PS . . . . . \$7800
- 930CK - Cab - Nice . . . . . \$6900
- 830 CK . . . . . \$3500
- VAC - Nice . . . . . \$1450
- 1030 . . . . . \$4900
- 580 CK w/Loader & 3 pt. . . \$6950
- I212 - Powershift. . . . . \$6900

#### LONG

- 310 - New . . . . . \$6900
- 310C - New . . . . . \$6900
- 360 . . . . . \$4800
- 560 4 WD . . . . . \$5350
- 610 4 WD - New . . . . . \$11,900
- 560 4 WD . . . . . \$3950

#### MASSEY FERGUSON TRACTORS

- 1105 . . . . . \$8800
- 175D - Nice . . . . . \$6900
- 1130 . . . . . \$6500
- 135 - Nice . . . . . \$4500
- 180 - Gas . . . . . \$4850

#### "10" 4 WHEEL DRIVE TRACTORS

From 30 HP to 225 HP

- MF 1805 - Cab - Air - 3 pt PTO -  
Duals - Nice . . . . . \$19,500
- White 4-180 - Cab - Air - 3 pt - PTO -  
Nice . . . . . \$16,500
- IH 4166 - Cab - Air - 3 pt - PTO -  
Nice . . . . . \$12,950
- Long 610 - New - Rollbar . . \$11,900
- Long 560 - 3 pt & PTO -  
Spider . . . . . \$5,350
- MF 210 - Demo - Like New . . \$6250
- MM G1000 Vista - 3 pt &  
PTO . . . . . \$5950
- Long 560 - 3 pt & PTO . . . . \$3950
- MM G706 - LPG - Nice . . . . \$3950
- Ford Masor 4WD . . . . . \$3950

### ALLIS CHALMERS

- (2) D21 w/Cab - Nice . . . . \$7500
- 220 . . . . . \$7950
- WD w/Picker . . . . . \$2500
- (5) G w/Asst. Tools . . . . . \$2000

### OLIVER

- 1855 - Cab - 1700 Hrs. . . . \$9800
- 2150 - Fender Tanks - New  
Paint . . . . . \$6500
- 1650 - Nice . . . . . \$4950
- Super 88D . . . . . \$1375
- 70 w/loader . . . . . \$875

### FORD

- 2000 w/Mower . . . . . \$3900
- 9600 DP - Wts . . . . . \$8900
- NAA . . . . . \$2750
- 8N . . . . . \$1975
- 600 . . . . . \$2750
- 5200 w/Cab . . . . . Coming In

### TRACTORS - MECHANICS SPECIALS

- Oliver 1800D . . . . . \$3000
- Farmall 806D . . . . . \$3950
- (3) Farmall 706 . . . \$3250 - \$3750
- JD R . . . . . \$1600
- JD 4020D . . . . . \$5750
- IH 656 D Hydro - WF . . . . \$3900
- JD 3020D . . . . . \$3950
- Oliver 1750 . . . . . \$3900

#### DUMPS - FARM

- 1974 Ford Louisville  
18' Omaha Dump  
w/Cattle Racks  
Diesel . . . . . \$13,950
- 68 Dodge Diesel  
w/16' Dump . . . \$5950

#### COMBINE CORN HEADS

- NARROW ROW  
IH 833-743-733-429-  
329-843-863  
JD 643-443-343-434-  
334-313-335-243  
AC 630-430-330  
Oliver 703N-541-631  
MF 63-43-33-421-321  
NH 4x30 QT  
Case 4x30-3x30  
NI UNI - 3x30 - 4x30  
WIDE ROW  
IH 744-429-329-327  
724-229-228-227-25-  
22-844  
JD 434-334-234-210-  
205-10-344-244-444  
AC 440-435-240-238  
Oliver 544-  
531-522-512  
MF 44-24-422-322  
222-22-20  
NH 2x40  
Case 4x40-2x40  
NI UNI 3x40-2x40

#### TILLAGE TOOLS

- 8' Cultmulcher  
(2) 10' Cultmulcher  
(3) 12' Cultmulcher  
14' Cultmulcher  
16' Cultmulcher  
1X - 3X AC Plows  
1X - 2X - 3X Ford Plows  
MF 5X Reset  
1X - 2X - 4X - 5X -  
6X - JD Plows  
JD 4X Reset  
Oliver 3X Rollover  
IH 2X Rollover  
1X - 2X - 3X - 4X - 5X -  
7X - IH Plows  
IH 5X - 6X Resets  
MH 1X Plow  
(30) 1X - 2X - 4X  
Cultivators  
(30) Disc's - All Kinds  
& Sizes  
7' - 9' - 11' - 15' - 19'  
Chisel Plows  
3 pt. & Pull Type Field  
Cultivators  
2X - 4X - 6X Rotary  
Hoes  
Howard 84" & 100"  
Rotovators  
Long 55" Rotovator  
Lely 13' Roterra

#### NI UNI SYSTEMS

- 701 Tractor w/cab  
727 Husking Bed  
2x40 Cornhead  
3x30 Cornhead  
Combine  
Grainhead  
3x30 Chopper Head  
Pickup Head  
High Moisture Throat  
2x40 Chopper Head  
3x40 Corn Head  
760 Chopper  
4x30 Corn Head

#### CABS (ON STOCK)

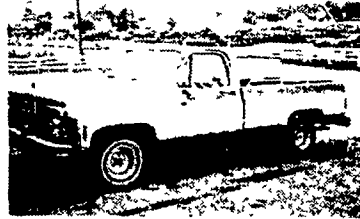
- New Cabs To Fit MF  
275 - 285 - 1150 -  
1085 - 1105 - 1135  
1155, Ford 5000  
7000 - 8000 - 9000  
8600 - 9600,  
Case 930 - 1030,  
Gleaner E  
Combine  
Used Cabs to Fit IH 06  
56, 66  
Gleaner A-E-CII  
Combines, IH  
203-303-403  
Combines, Case  
960 Combines, NI  
701 Uni Cab  
New Cooler Units \$500  
Lots of Roll Bars . Call

#### WAGONS

- New 6 Ton Gear . \$450
- New 8 Ton Gear . \$575
- New 10 Ton Gear \$675
- New 11 Ton Tandem  
Gear . . . . . \$975
- New 12 Ton Gear \$975
- New Bale Bodies \$495
- EZ 16' 3 Beater Box  
Only - Roof . . . \$2500
- Lamco 16' 3 Beater  
Box Only - Roof . . 2350
- (2) JD 216 - 3 Beater -  
Roof w/Gear . . . \$2250
- JD 214 - 2  
Beater . . . . . \$1850
- New 16' Feeder  
Box . . . . . \$585
- Feeder Wagon  
Complete - Used. \$575



### 1980 CHEVY DIESEL PICKUP



30,000 Miles, Silverado, Air,  
Power Windows & Door Locks, Tilt Wheel,  
All Options - 30 In All  
**\$7495<sup>00</sup>**

CHOICE of 3 TRUCKS - ALL NICE

### COMBINES

- JD 4400 - Nice - Rotary Screen . \$15,900
- JD 7700 D - Fire Damage . . . \$9500
- JD 55 SB - sharp . . . . . \$8900
- Case 660 - Nice . . . . . \$4500
- IH 82 Pull Type . . . . . \$3500
- JD 40 . . . . . \$2000
- IH 203 . . . . . \$2000
- AC CII . . . . . \$2500
- Case 960 . . . . . \$2000
- IH 303 . . . . . \$2000
- JD 45 EB - Nice . . . . . \$6900

#### HARVESTING EQUIPMENT

- NI 325 12 Roll  
Picker (Late) . . . \$6500
- NI 324 12 Roll  
Picker . . . . . \$4950
- NI 325  
w/Sheller . . . . . \$3800
- NI 325 8 Roll  
Picker . . . . . \$4900
- NI 319 12 Roll  
Picker . . . . . \$3000
- NI 311  
w/Sheller . . . \$1650
- NI 323 1 Row . \$3250
- Extra 12 Roll Beds Call
- AC WD45 w/Ford 2X  
Mtd . . . . . \$2500
- IH M w/NI 2X  
Mtd (319) . . . \$3950
- Shellers & Grinder  
Attach . . . . . Call
- (2) MM 1200  
Sheller \$3800-\$4500
- JD #6 Sheller . \$1850
- (3) NH Super 717 Base  
Choppers . . . \$1750
- NH 707 1X . \$1650
- (2) JD 38 Base  
Chopper . . . \$750
- IH 555 Base  
Chopper . . . \$750
- Gehl 300 Base  
Chopper . . . \$750
- AC 720 Base  
Chopper . . . \$750
- JD 25 1X 3 Pt.  
Demo . . . . . \$2500
- JD 35 Base  
Chopper . . . \$1250
- IH 720 Base  
Chopper . . . \$3950
- 1X - 2X - 3X Heads to  
Fit Most Choppers  
Pickup Heads to Fit  
Most Choppers  
Direct Cut Heads to Fit  
Most Choppers  
Snapper Heads to Fit  
NH 1X and Fox 2X -  
3X  
Used 4'-5'-6'-7'-8'  
Rotary & Flail  
Mowers  
Brady 4X Stalk  
Cutter . . . . . \$1350
- Flail Head For Fox

#### HAY EQUIPMENT

- NH 68 Baler . . . \$850
- NH 479 Haybines \$2950
- Hesston PT10  
Haybine . . . \$950
- (6) Sickle Bar  
Mowers . . . Call
- NH 258 Rake . \$1250
- JD Rake (late) . \$1350
- Case Baler . . . \$695
- NI Rake . . . \$250
- NH Mow Conveyor  
New . . . . . \$350
- Mayrath 32  
Elevator . . . \$895
- Zimmerman 32  
Elevator . . . \$1175
- Hesston 10W Stack  
Movers . . . \$650-\$850
- JD 200 Stack  
Mover . . . \$2500
- Hesston 30 Stack  
Mover . . . \$2500
- IH 27 Baler . . \$695

### NEW EQUIPMENT SPECIALS

- 6' 3 pt. Stone  
Rakes . . . . . \$495
- 8' 3 Pt Stone  
Rakes . . . . . \$595
- 6' 3 pt. Scraper  
Blades . . . . . \$245
- 7' 3 pt. Scraper  
Blades . . . . . \$295
- 8' 3 pt. Scraper  
Blades \$395 & \$795
- Landscape  
Boxes . . . \$450 & up
- 6' 6' 3 pt. Disc's \$500
- Spike  
Harrows \$500-\$600
- 3 pt. Fert  
Seeders . . . \$395
- Round Bale  
Feeders . . . \$145
- 3 pt. Boom Poles \$49
- 3 pt. P T O Wood  
Saws . . . . . \$875
- 3 pt. 9" P H.  
Digger . . . \$495
- 1200 Bushel Corn  
Cribs . . . . . \$795
- 165 Bu Gravity  
Boxes . . . \$475
- 210 Bu Gravity  
Boxes . . . \$545
- 5' 3 pt. Rotary  
Mower . . . \$495
- 5' Pull Rotary  
Mower . . . \$695
- 6' 3 pt. Rotary  
Mower . . . \$695
- 6' Pull Rotary  
Mower . . . \$795

#### MISC. EQUIPMENT

- NH 354 Mill . . . \$3850
- NH 352 Mill . . \$1975
- Gehl Mill . . . \$1500
- Hammermills \$295
- NH Table Blower \$395
- Farmhand Blurr  
Mill . . . . . \$1250
- P T O Manure  
Pump . . . \$3500
- Corn Drags \$400
- Belt Elevators Call
- 4 to 10' Snow  
Plows . . . Call
- Danuser P H.  
Diggers . . . \$695 & up
- Case Lime Drill \$495
- Oliver 2X Potato  
Digger . . . \$975
- 1X Potato Plows Call

### WANTED

FARM TRACTORS - CRAWLERS -

COMBINES - MACHINERY

FOR OUR

SALVAGE YARD

#### PLANTING EQUIPMENT

- JD FBB 17 Drill
- IH #10 16 Drill
- IH 21DD Drill
- JD - IH - Ferg - 2X  
Cornplanters
- Ford - IH - AC - JD -  
4X Cornplanters
- JD - AC - 6X  
Cornplanters
- JD 8X Cornplanter

#### MANURE SPREADERS

- NH 676 Tandem \$2850
- (4) IH Cub  
NH PTO - Nice  
NI 18  
JD N  
(3) NI P T O

DUALS - 25 SET ON  
STOCK ALL KINDS  
& SIZES - CALL

#### LOADERS

- JD 46 Off 4020. \$1000
- JD 48 Off 4020. \$1200
- JD 148 Off  
3010 . . . . . \$1500
- JD 45 Off A . . . \$450
- Freeman Off DB  
990 . . . . . \$1200
- Davis Off MF 35 \$1200
- IH 2350 Off  
1066 . . . . . \$1900
- Drott Off IH 340  
Crawler . . . \$900

#### SKID STEER LOADERS

- Case 1740  
Diesel . . . . . \$5800
- Case 1816 - 400  
Hours . . . . . \$3500
- Case 1845D . . \$8500
- Melroe 731D \$7500

#### SHOES ★ SHOES

Mostly Ladies,  
A Lot Of Childrens,  
Some Mens  
6 Pairs for  
**\$24<sup>95</sup>**

Special Prices By 1000 Pair Lots \$1 00 Per  
Pair If You Take All

COME TO THE PEOPLE THAT DO BUSINESS