

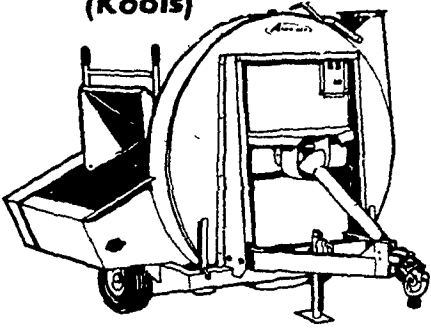
FARM EQUIPMENT

FARM EQUIPMENT

FARM EQUIPMENT

Summer Special...

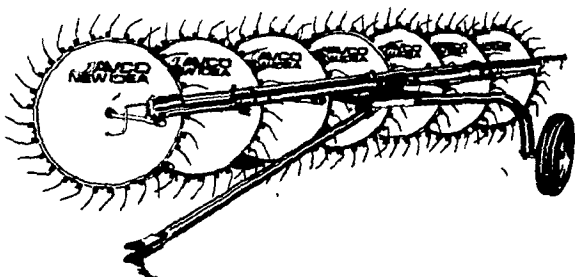
NEW IDEA MODEL 621 FORAGE BLOWER (Kools)



New Idea's 621 Forage Blower is a rugged, high capacity model for better performance than ever before. It features a husky 57" fan for medium to large operations. Comes with a standard adjustable tongue that makes tractor hook-up fast and simple...

SUMMER SPECIAL
\$1,700

NEW IDEA MODEL 404 SPEED WHEEL RAKE



The 404 Wheel Rake is a high quality rake at a reasonable price. Rakes fast and clean in any field... smooth, uneven, contoured or hilly. Plus, it costs less to buy and less to maintain.

Was
\$1,150

TRUCKLOAD \$1050 SPECIAL

ZIMMERMAN'S FARM SERVICE
Bethel, PA
Phone 717-933-4114

AVCO NEWIDEA

BRICKERVILLE EQUIPMENT

SALES * SERVICE * PARTS

537 E. 28th Div. Hwy. Lititz, PA 17543
717-626-6198

Outstanding Features

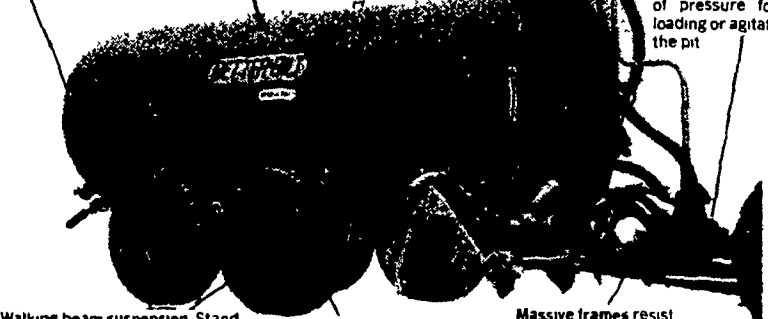
Thick walled for extra strength. No spreader on the market has thicker walls 30 to 70% thicker steel than competitive spreaders.

Adjustable relief valve maintains uniform pressure. Prevents over pressurization of tank.

Primary Shut-Off valve, plus a secondary shut off provide more than adequate protection against liquids entering the pump.

Big 5 1/2 cubic inch displacement pressure-vacuum pump is standard equipment. Conservation rated at 135 C.F.M. of air at 85 to 90 percent vacuum for filling and will maintain 10 to 15 lbs. of pressure for unloading or agitation in the pit.

Open door models permit access for cleaning and easy maintenance.



Walking beam suspension. Stand on 2 600 3 150 3 600 and 4 600 gallon models. (Optional on 1 500 & 2 100 gallon models). Front & rear wheels on each beam follow contour of the ground provides a smooth level ride.

Flotation tires reduce soil compaction. Let you spread on soft ground early in season.

Massive frames resist the wrenching, twisting jolting shocks of hard field usage year after year.

Sizes - 800 gal. thru 4600 gal.
Both vacuum & augermatic spreaders for truck mount or trailer type

SPECIAL

1 - USED BETTER BILT 2600 Gallon VACUUM SPREADER w/Tandem Axle and 4" Suction Hose, Plow Down Attach.

1 - Used 5 1/2 ft. Pickup Head for JD 3940 Harvester, good condition.
One 7' Myers snowplow for Ford 1/2 ton pickup, good condition

CALL US FOR YOUR NEEDS OF

- Farrowing Crates
- Lagoon Pumps
- High Pressure Pumps

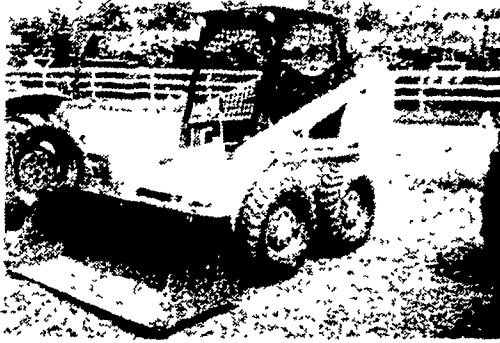
WENGERS INC.

251 S. RACE ST.
MYERSTOWN, PA 17067

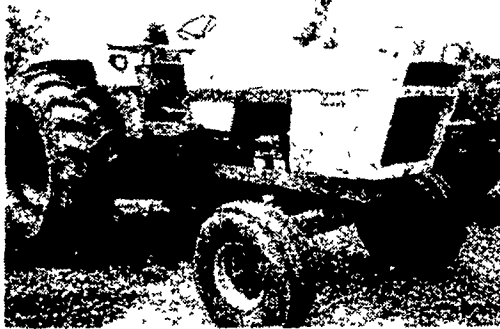
DAYS: 717-866-2135
NIGHTS: 717-866-7147
or 717-273-9089



Farmall 1086 - Good Condition - \$13,700 or rent me \$1750 per month



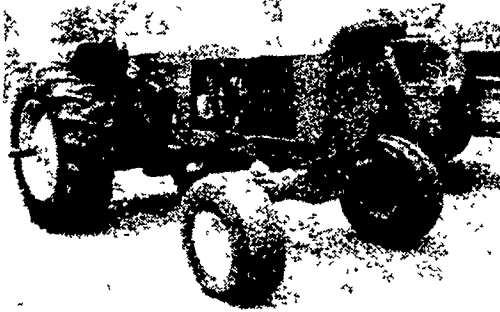
1979 Melroe Bobcat Deutz Diesel - Runs Good \$7500



1973 Case 1370 - New 20.8x38 Rubber Only \$9950



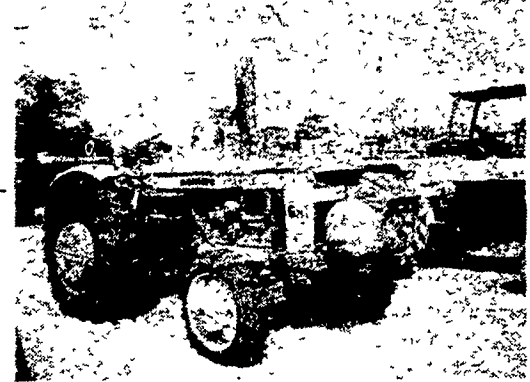
Farmall M w/NI319 Picker - Nice \$3950



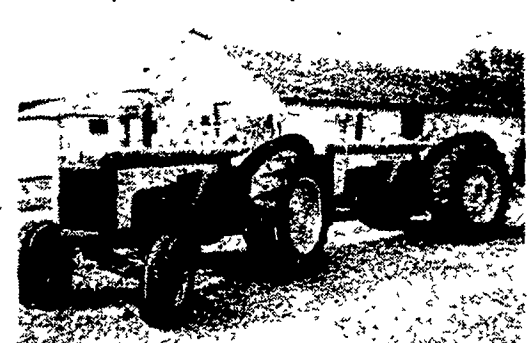
1969 JD 4520 Side Console Nice \$9800



1977 White 4-180 - 3 pt. & PTO 1160 Hours - 3208 Cat Diesel - Only \$16,500



MM G706 LPG 4WD Nice original tractor cheap \$3950



JD 830's - Nice & Clean - \$4500 each or buy the train - \$8750



Case 1845 Diesel - 1979 runs good \$8500

CONSTRUCTION EQUIPMENT

CRAWLER DOZERS

Cat D8 \$1950

FORKLIFTS

Int 340 - 14' \$5800
Yale 3000 Lb. \$3950
AC 621-21' \$8950

BACKHOES

Long 3 pt. Hoe-new \$4500
Long 5 in 1 w/cab \$15,900
3 Pt. Backhoe. . . \$2400
IH Hoe Attach. . \$1800
IH 3800 4WD w/Cab \$9500
Ford 4500 \$7500

SKID STEER LOADERS

Case 1740 Diesel \$5800
Case 1816 - 400 Hours \$3500
Case 1845D \$8500
Melroe 731D .. \$7500

MISC. CONSTRUCTION

(40) Used hoe buckets . . . From \$150
(25) Loader buckets . . . From \$95
(30) Set forklift forks . . . From \$300
(6) Winches Call Adams Grader . \$2000
Michigan 75 Loader \$5950

TRAILERS

1969 Great Dane 35 ton detachable . . \$14,750
New 2X 4 Ton. . . 1350
New 3x6 Ton. . . \$2000

CRAWLER LOADERS

Cat 941 \$15,900
Cat 933 \$8750
JD 350 \$7500
AC HD4 \$3000
Cat 977L \$19,000

TRUCK TRACTOR

1974 Ford Louisville Diesel \$7950
1979 GMC Cab Over \$22,500

LOG SKIDDER

JD 440A-1970 . \$8750
JD 401B-1975 . \$6750
Orange Skidder \$5950
IH TD6 w/winch \$3850

CONSTRUCTION DUMPS

(2) 1974 IH & Ford Diesels w/9' Bodies - Air Brakes . . \$11,900
1968 Ford 1 Ton \$3950
1967 IH Gas . . . \$2500
1966 IH Diesel . \$3000
1967 Ford Tri-Axle, Gas. \$5950