

**2 DAY PUBLIC SALE**

**EARL STOYER CADILLAC - OLDSMOBILE GMC - TRUCK,  
COMMERCIAL GARAGE, SHOWROOM,  
OFFICE COMPLEX, BODY SHOP,  
OFFICE EQUIPMENT, TOOLS, PARTS,  
PARTS BINS, ETC., 1979 GMC WRECKER,  
REPLICA 1903 OLDSMOBILE & OTHER CARS  
THURS., JULY 15th & FRIDAY, JULY 16th 1982  
9:30 A.M.**

Location: Columbia and Berna Streets, Schuylkill Haven, Schuylkill Co., Pa.

**REAL ESTATE DESCRIPTION:** A comm. corner lot approx. 1.1 A. located within the business district of Schuylkill Haven. Situated there on an all-brick 2-story comm. garage featuring 12,240 sq. ft. on 1st floor: with a main showroom, display area, 7 sales offices, 4 body work areas, 10 service bays, paint body shop, parts room and rest room. Second floor as storage. Full utilities include steam oil-fired heat, city water and sewerage, borough electric with 3 phase hook up. Macadam parking & sales lot for 100+ cars. Additional 2.4 acres may be negotiated separately.

**GARAGE EQUIP.** — Manley 25T. hyd. flr. press, port. engine stand, hyd. port. engine lift, Kellogg 3 h.p. single phase comm. air comp., 5 h.p. 3 phase Ingersoll-Rand & Curtis air compressors, table model metal lathe 3' bed, bench drill press, Arc elec. welder, acetylene welding outfit w/tanks & buggie complete, Bear brake disc & drum lathes, key maker machines, 3 & 2 T. Walker jacks, port. hyd. trans. jack, 10 & 15 T. hyd. Walker truck jacks, hyd. air truck jack, 12 pr. safety jacks, 3-1/2 T. hyd. bumper jacks, Bishman All American Model 76 wheel bal. w/safety shields - wts. & 1/4 h.p. motor & gauges, Bishman 30-40 tire changer w/air inflater, tubeless tire inflater, Coats 10-10 air tire changer, Bishman air flo wheel balancer, flr. bubble balancer, 1 T. chain hoists, trans. & differential holder, 9' steel top port. 3 dr. work benches, 5 - 4' metal mechanics' parts & tool cabinets, Craftsman chest on chest port. tool cabinets, dollies & creepers, battery booster, battery testers, pinion gauges, Tach Dwell tune-up machine, EFI tester, air cushion restraint analyzer, temp control testers, ball joint set, ignition tester, plug cleaner, air brake lining cleaner, radiator pressure tester, Sun amp volt tests, Sun air cond. recharging station, port. Ser-Con volt amp tester, Sun volt tester, Sun tune-up scope, Bear front end alignment unit, headlight aimer, Kwick Way valve refacing machine, reseater & refacer, Sioux valve refacing unit, 12 volt battery eliminator, ohm meter, HEI eliminator, power steering gauge tester, tire leak tank, port parts washer unit w/drain top, metal parts tables, air cond. compressors, cutting, gauges & torches, air chisel, 8 bench vises, anvil, dbl. bench grinder, 5 hp comp. motor, pressure washer unit, grease jack stand, trans. grease dispensers, air grease gun, wheel bearing packing pump, Tempo tanker, coil spring compressor, timing light, tension gauge, repair order wall racks, time clock & card holders, 60 metal parts bins - like new, AFA 10 comp. parts storage bins, tire racks, storage cabinets, parts & file cabinets, dbl. dr. Youngstown safe, all sizes metric - SAE & USS bolts & nuts, brass fittings, fluorescent lights, alum. ext. ladder, Diesel injection nozzle tester & engine tools, 480 snap-on Diesel timing meter, power steering tools, steering wheel & pittman arm pullers, carburetor - front end bushing - power brake bleating - trans. & constant velocity joint tools, air cond. tools w/gauge set, torque wrenches, air wrenches, Rockwell air impac wrench, air chisels, vac. gauge, front end wrenches, tap & die sets, asst. wheel pullers, carburetor adj. tools, cam shaft bushing remover & replacer sets, hydromatic bushing sev. set, tool boxes, alignment cables, tow chains, hyd. dr. checks, trans. parts, Strove warning lite; 3/4" dr. sockets, drills, GM essential tools, drain pans, car & truck chains, flaps, air hose, tow cables, asst. bumpers, support bars, roof rack & tarp, air cond. oil, Zep cleaner, tar & oil removers, 5 gal. can vinyl GM cleaner, rolls new cleaning cloth, rear deck carrier, wiper blades, platform scale, flr. polisher, Sears oil heater, truck wheel step, utility cart, hi pressure hose, fittings, ceiling fans, Quartz heaters, anti-freeze, port. slush pump w/Briggs & Stratton motor & hose, sev. elec. signs, etc.

**BODY SHOP & PAINTING EQUIP.** — DeVilbiss Model M260SEME530 - 24' spray booth w/lights - filters - in & out exhaust fan for thru roof or wall including duct work, port. heat

drying lamps, elec. sheet metal cutter, easy stripper machine & paint, DeVilbiss paint spray guns, air sander, vibrator sander, air & elec. heavy duty grinders, hi & lower spd. buffers, air undercoating machines, air paint shaker, asst. Centari paint, acrylic lacquer, stripping paint, asst. hand body tools, 3/8, 1/2 & 3/4" drills, bumper puller, 2 complete 10 T. Porta powers, hyd. body pullers, Midget Porta powers, pop rivets & tools, fire ext., sand blasting outfit, flr. cleaner & motor wash, 750 16 LT mud & snow tires w/wheels Chevy & GMC, 878-15-750-950 15 & 16" truck tires, 60 asst. size 13 - 14 - 15" radial & belted car tires, outdoor elec. dealer signs, 4 sodium car lot lights w/poles, 12x12 port. used car lot office w/white alum. side, etc.

**WRECKER & CARS** — 1979 GMC Series 3500 4 wheel dr. wrecker w/Holmes Commander Model 1200 hyd. turntable booms w/dolly wheels - front mount push bumper & front mount hyd. 8 1/2' Vor power angle snow plow - 14,000 original mi. - like new, Western 8' snow blade complete, 1903 Replica Oldsmobile, 1954 Cadillac 4 door sedan, 1980 A-title Cadillac Eldorado coupe, 1979 Volkswagen Rabbit 4 dr., 1978 Chevette coupe, 1972 C20 7,000 lb. Chevy van, 1980 Olds 88 Royale sedan. Cars subject to sell before sale only.

**OFFICE EQUIP.** — 1501 Singer data processing machine w/702 Centronics connector printer, SCM 142 copier w/2 dr. cabinet & copy paper, Unicorn 500P printing calculator, Canola EP 151 calculator, Monroe calculator, Protectograph, Copy rite copier, 2 IBM Selectric II w/interchangeable type ball, Selectric IBM typewriter & stand, data view Microfiche 12x12 display, Sharpe compact model CS2051 elec. printing calculator, elec. NCR cash register, NCR adding & cash register unit, 2 NCR manual cash registers, NCR 160 front feed elec. bookkeeping machine w/files, 2 Royal typewriters, 7 Burroughs elec. adding machines, slip & check writers, dbl. dr. office safe, single dr. office safe, 4 dbl. dr. lock type office cabinets, 4-drawer & dr. file cabinets, Roll-a-Dex single & dbl. card files, 6" service write-up desk w/light & shelves, CB base station w/antenna, RCA B&W TV closed circuit security lot camera w/scan, Bell & Howell sound film projector, elec. water fountains, air cond., gate silencing tela tepro cover, 6' formica top folding table, 30 4-drawer full suspension file cabinets, 12 4-drawer letter size file cabinets, desk files, 2-shelf glass sliding dr. file, 20 single drawer desk files, 10 Cole sliding glass dr. manual cabinets, approx. 200 parts manuals, 14 formica & metal flattop executive desks, Deluxe art metal execu. desk, arm & swivel office chairs, 8' walnut top conference table, 8 vinyl swivel chrome base chairs, etc. Oak 80-drawer & 20-drawer parts cabinets, oak flattop desks, oak office chairs. Hundreds of items too numerous to mention. Inspection of Real Estate or Personal Property 1 to 4 p.m. Sun., July 11, or July 12, 13, 14, 9 a.m. or 3 p.m. or call auctioneer for appt.

**Terms: Personal Property** — cash, certified, cashier's check or bank letter of purchase approval.

**Real Estate** — 10% down, balance in 30 days - other terms made known day of sale.

**Order of Sale:** Thurs. - garage equipment, tools, parts, vehicles and real estate (1 p.m.)

Fri. - Parts bins, office equipment, and remaining tools and equipment.

**AUCTIONEER NOTE:** A tremendously large sale, merchandise in excellent condition. Complete sell-out of Earl Stoyer Cadillac - Oldsmobile - GMC - Truck.

**TENT FACILITIES AVAILABLE**  
(Refreshments will be served)

Sale Ordered By  
**EARL S. STOYER II**

Curtis, Doug, Tim Houser,  
Auctioneers  
Route 1, New Ringgold, Penna.  
717-386-5631 or 2191  
215-799-2396

**CAVENCREST  
CANADIAN  
CLASSIC****SATURDAY, JULY 24**

12:30

Guernsey Sales Pavilion, Lancaster, PA

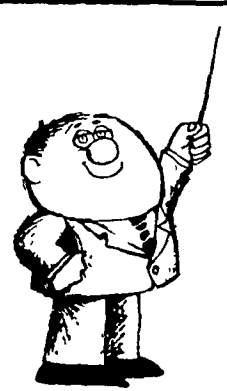
**SELLING 60 HEAD OF RED & WHITES AND  
BLACK & WHITES OF ALL AGES. 30  
REGISTERED IN HFAA, ALL REGISTERED IN  
RWDC. DHIA RECORDS AND CLASSIFICATION**

This sale will feature the good Canadian herd of Cecil Cavanagh, Kinburn, Ontario. There will also be some nice added consignments. There will be many fresh and springing, along with a fine offering of bred heifers, open heifers and fancy heifer calves. There will be some Very Good cows, both Red & White and Black & White, with good DHIA records. Many of the top bloodlines of Canada are represented in the herd. **WHETHER YOU NEED REGISTERED OR GRADE, RED OR BLACK, COWS OR NICE HEIFERS, THERE WILL BE SOMETHING IN THIS SALE FOR YOU! DON'T MISS THIS OPPORTUNITY TO ADD SOME OUTSTANDING CANADIAN BREEDING TO YOUR HERD!**

**FEATURE SIRES:** High Silo Haven Jetstar (VG-Extra), Maplelawn Canadian-Red (EX), Cresshaven Dean-Red (EX), Mooreville Rocket Kemp, Nelacres Johanna Senator (EX), Northcroft Admiral Citation (EX-Extra), Howes Reflection Dolan (VG), Banella Linda Royal-Red (VG), Ingholm Skagway (EX).

SEE DETAILS IN JULY 17 ISSUE OF  
LANCASTER FARMING

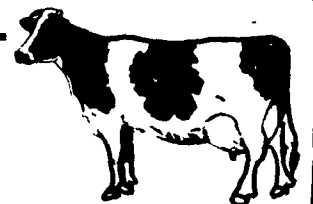
**CATALOGS AND INFORMATION:**  
RWDCA  
Box 63L  
Crystal Spring, PA  
814-735-4221



**A LESSON  
WELL  
LEARNED...  
LANCASTER  
FARMING'S  
CLASSIFIED  
ADS  
GET RESULTS!  
Phone:  
717-394-3047  
or  
717-626-1164**

**THE PAUL & ANN LAWRENCE  
COMPLETE DISPERSAL**

**83 Reg., I.D. and Grade  
Holsteins - Machinery  
FRIDAY, JULY 23, 1982  
at 10:30 A.M.  
Sussex, N.J.**



For Paul & Ann Lawrence located on the former Twin Ponds Farm, now operated as Upsala College, Wirths Campus on Compton, Rd., off Rt. #565, 3 miles S.W. of Sussex, N.Y. Follow signs Upsala College.

**10:30 A.M.** - some small items, feed carts, barn tools, water tank, barn fans, 2 Patz barn cleaners 50 and 60 cow 1 clockwise, 1 counter clockwise, Acorn 16 ft. silo unloader like new, Patz 14 ft. silo unloader, 6 ton feed tank, 4 DeLaval milkers, 1 year old milk system F-4 Boumatic pump w/Westfalia regulator and PVC #80 Vac line for 60 cows can run 5 units! Dumping station.

**11:30 A.M.** - Tractors J.D. 2630DL 70 hp. WF 3 PTH real sharp, J.D. G., Gehl chuck wagon, N.H. chuck wagon, N.H. 717 chopper w/corn hd., N.H. #33 flail chopper, Gehl 9 ft., haybine, A.C. PTO hopper blower, 40 ft. plastic silo pipe w/disc., snoco 28 ft., pipe elevator, N.I. 212 PTO manure spreader w/end gate (new chain).

**12 Noon** - Linde 16 wk semen tank, Semen-Glen-Ace-Medessa-Tex-Matador-Highjet and others.

**83 DHIA Tested Holsteins** - 51 hd. Registered, 32 I.D. or high grade. 43 hd. in the milk row, 9 fresh recently averaging 65 lbs., 12 hd. due from Aug. thru Oct., balance in various stages. Sires Rep. - a Reg. Marvex and Persauder dtr. both purchased at Berks County Club sale last year! a Reg. Gay Ideal, Reg. Jemini, Grades by Jet Stream, Job and others. Service Sires - Persauder, Ace, Creek, and others.

**DHIA Tested** - herd ave. 13,417 milk, 488 fat, with individual records to 213074M and 762F.

**Attention** - this dairy is under a moderate feeding program and has the potential for greater advancement!

Age 50% are 1st. and 2nd calf heifers, many not classified. 1 VG cow sells, 10 Good Plus and 7 Goods.

**40 Heifers** - 24 Reg. balance I.D. grades. 14 bred with 7 due Oct. and Nov., 7 due Jan. and Feb., 5 ready to Breed, 9 ready to breed Jan., 12 hed. from started calves to 9 mos. old!

**Sires Rep.** - Job, Trump, Jemini, Persauder, Ace, Glen, Legacy, Superior and others. The bred heifers are in service to chairman. Jemini, Hannibal, Legacy and others! Heifers show size, type and milkability!

**Health** - Cattle have had all shots, heifers are vac. Herd is T.B. and Blood Tested and eligible for immediate interstate shipment. pregnancy examined!

**Note** - The owner has been up grading this herd by breeding to the top 50 on the TPI list, using high production high score sires! All the potential is here, Plan to Attend this Sale. Catalogs at ring side!

**Terms** - Cash or Good Check w/I.D. Paid in full Sale Day. Lunch! Not responsible for accidents!

Owner  
**PAUL & ANN LAWRENCE**

Sale Conducted By: 201-875-4480

Col. Fred R. Canij Auctioneers Inc.

Neshanic Sta., N.J.  
201-369-4784

Farm Sales are our Specialties