

## Livestock market and auction news

Lancaster Farming, Saturday, July 10, 1982—A13

### Chambersburg Auction Chambersburg, Pa. Thursday, July 8

**CATTLE:** 365. Compared with last Thursday's market: Sl. cows strong to 1.50 higher. Sl. steers: low to average Choice 2-4, 1050-1250 lbs. 64.00-66.10, few holsteins 60.00-64.75; Good 58.50-62.50, couple to 64.00; Standard 52.50-57.50. Sl. heifers: Prime 65.00-

67.00; Choice 57.00-65.50; Good 55.50-58.50; (few) Standard 54.00-55.25. Sl. cows: Utility & Commercial 44.00-48.85, few to 50.85; Cutters 40.00-44.50; Canner & L. Cutter 36.00-40.00. Sl. bullocks: one Choice at 56.25; (few) Good 52.50-55.00. Sl. bulls: Yield Grade No. 1 & 2 1100-2150 lbs. 47.00-56.85, one at 59.60.

**CALVES:** 478. Couple Prime

102.00 & 103.00; Choice 70.00-85.00, couple to 95.00; Good 60.00-70.00; Standard & Good 70-105 lbs. 54.00-64.00; Utility 50-85 lbs. 35.00-50.00.

**FARM CALVES:** Hol. Bulls 85-130 lbs. 65.00-85.00, few to 102.00; Hol. Heifers 90-150 lbs. mostly 80.00-100.00.

**HOGS:** 40. One lot No. 1-3 250 lbs. at 60.75. US No. 1-3 275-450 lbs. 53.00-57.00. Couple Boars at 46.00.

**FEEDER PIGS** 26. (few) lots US No. 1-3 40-50 lbs. 44.00-44.50 per head.

**SHEEP:** 14. One lot Choice 115 lbs. at 48.50; one lot Utility 50 lbs. feeders at 33.00.

**GOATS:** 11. 35.00 per head.

### Indiana Auction

Homier City, Pa.

Thursday, July 8

Report supplied by PDA

**CATTLE:** 78. Compared with last Thursday's market: Sl. cows mostly steady. Sl. steers: one Choice at 66.75, (few) Good 56.00-61.00; (few) Standard 49.00-51.00; Utility 44.00-48.00. Sl. heifers: (few) Standard 51.00-52.00; Utility 45.00-49.75. Sl. cows: Utility & Commercial 43.50-47.50; Cutters 40.00-44.00; Canner & L. Cutter 32.00-40.50; Shells down to 26.00. Sl. bulls: Yield Grade No. 1, 1200-1600 lbs. 50.00-56.25; (few) Yield Grade No. 2, 1000-1500 lbs. 48.00-49.25.

**CALVES:** 114. (few) Choice 81.00-84.00; (few) Good 64.00-71.00; Standard & Good 50-120 lbs. 62.00-76.00; 60-85 lbs. 57.00-65.00.

**FARM CALVES:** Hol. Bulls 90-120 lbs. 68.00-94.00; (few) Hol. Heifers 68.00-78.00.

**HOGS:** 73. Barrows and gilts fully 1.00 higher. US No. 1-2 200-250 lbs. 61.50-62.50; No. 1-3 195-260 lbs. 59.80-61.60; (few) No. 2-3 220-260 lbs. 57.00-58.90; (few) US No. 1-3 300-450 lbs. 50.00-58.00. (few) Boars 42.00-44.75.

### Weekly Summary

Friday, July 9

Report supplied by PDA

**CATTLE:** 5484 Compared with 6335 head last week, and 7016 head a year ago. Compared with last week's market: Slaughter steers steady to .75 higher; Sl. heifers strong to 1.00 higher; Sl. cows mostly uneven; Sl. bullocks mostly steady; Sl. bulls strong to 1.50 higher. Sl. steers: High Choice & Prime No. 3-4, 69.75-74.75; Choice No. 2-4 65.00-70.85 Good 59.00-65.00; Standard 53.00-59.50. Sl. heifers: Choice 61.00-67.25; Good 55.00-62.00; Standard 50.00-55.50. Sl. cows: Utility & Commercial 44.00-48.00 few to 50.00; Cutters 40.00-45.50; Canner & L. Cutter 37.00-41.00; Shells down to 30.00. Sl.

bullocks: Choice 57.50-60.25; Good 54.00-58.50; Standard 51.00-54.50. Sl. bulls: Yield Grade No. 1, 1000-2250 lbs. 55.00-59.50; Yield grade No. 2, 900-1450 lbs. 49.00-54.75.

**CALVES:** 3225. Compared with 3966 head last week and 4473 head a year ago. Vealers highly uneven. Choice 75.00-90.00; Good 59.00-80.00 few Standard & Good 110-130 lbs. 65.00-72.00; 90-110 lbs. 60.00-69.00; 65-90 lbs. 55.00-64.00; few Utility 50-110 lbs. 35.00-50.00.

**HOGS:** 2628. Compared with 7436 head last week and 7708 head a year ago. Barrows and gilts unevenly steady. US No. 1-2 200-245 lbs. 62.00-63.50 No. 1-3 200-250 lbs. 61.00-62.50; No. 2-3 200-275 lbs. 59.00-61.00; few No. 1-3 140-190 lbs. 55.00-60.00; sows 1.00-2.00 higher. US No. 1-3 300-595 lbs. 51.00-58.00; No. 2-3 300-650 lbs. 46.00-52.00. Boars 36.00-48.00.

**FEEDER PIGS:** 949. Compared with 1169 head last week and 1190 a year ago. Feeder pigs steady to 5.00 higher. US No. 1-3 20-35 lbs. 25.00-43.00; No. 1-3 35-50 lbs. 38.00-48.00; No. 1-3 50-75 lbs. 46.00-67.00 per head.

**GRADED FEEDER PIGS:** 2539. Compared with 1557 head last week and 2942 head a year ago. All sales by CWT. Feeder Pigs uneven, mostly strong to 5.00 higher. US No. 1-2 25-40 lbs. 131.00-147.00, few to 158.00, 40-50 lbs. 128.00-141.00, 50-60 lbs. 117.00-128.00, 60-65 lbs. 101.00-106.00; US No. 2-3 25-40 lbs. 116.00-136.00, 40-50 lbs. 123.00-134.00.

### North Jersey Livestock

Hackettstown, N.J.

Tuesday, July 6

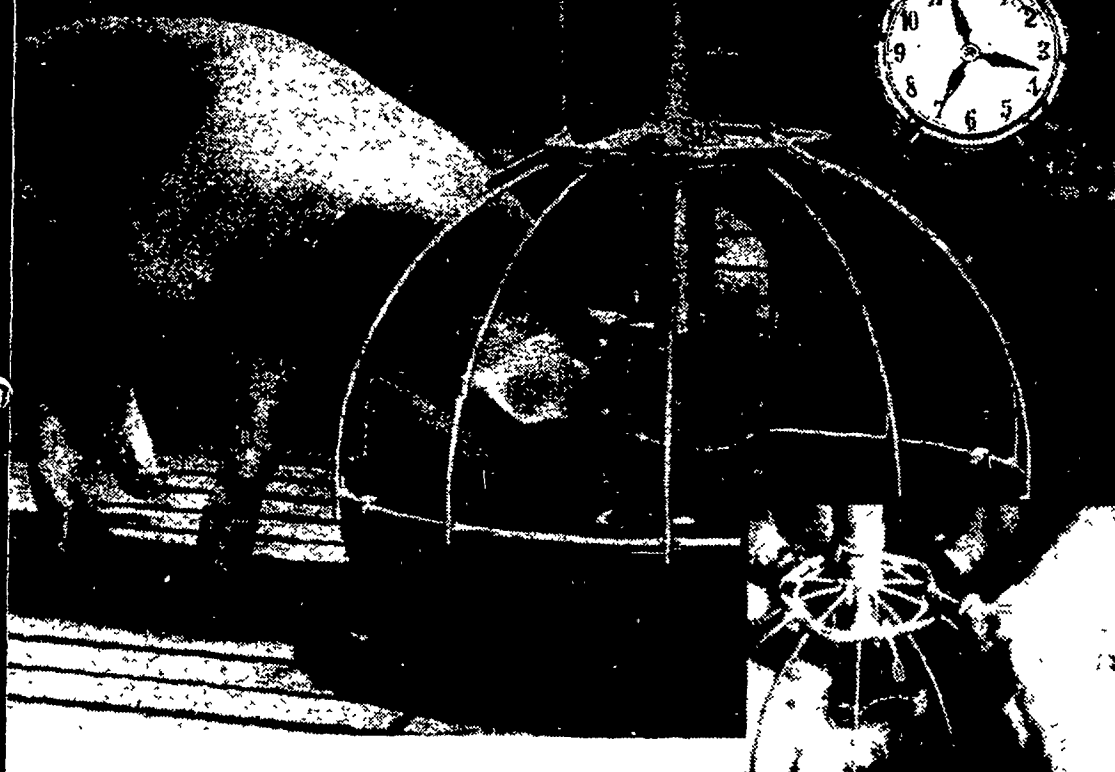
Report supplied by auction.

1019 head.

Calves 15.00-105.00; Cows 35.75-51.25; Easy Cows 28.50-45.00; Heifers 45.00-56.25; Bulls 46.25-59.50; Steers 45.00-68.50; Hogs 52.00-60.00; Roasting Pigs, each 18.00-35.00; Kids 5.00-40.00; Sheep 22.00-43.00; Lambs, each 9.00-57.00; Lambs per lb. 40.00-80.00; Goats, each 5.00-76.00; Hides 7.00.

## MEAL-TIME

The programmed feeding system that cuts your No. 1 production cost



Now there's a way you can boost profits 20% or more. An entirely new way to feed hogs, Chore-Time's new MEAL-TIME Hog Feeding System feeds your hogs 2 or 3 programmed "meals" a day, giving them time to thoroughly digest and fully utilize their feed. The result — feed conversion improved 5% or more for an additional 15 to 20% or more net profit per pig.

Chore-Time offers 3 sizes of MEAL-TIME feeders with built-in waterers to properly fit all hogs and minimize feed wastage.

See us today and find out how you can profit from the Chore-Time MEAL-TIME System.

CHORE-TIME

FEED — WHY USE MORE  
WHEN LESS WILL DO?

AGRI-EQUIPMENT, INC.

COMPLETE SYSTEMS & EQUIPMENT FOR  
CATTLE, HOG, POULTRY & GRAIN

SALES, INSTALLATION & SERVICE  
2754 Creek Hill Rd., Leola, PA 17540  
PHONE: 717-656-4151

SERVING PA, N.J. AND N.Y.

HOURS:  
Mon.-Fri.  
7:30 to 4:30  
Sat.  
7:30 to 11:30

## PASTURE NUTRIENT BALANCER

As you know good pasture provides an excellent source of protein during the spring and summer months. In fact, lush green pasture may be as rich in protein, on a dry basis, as corn gluten feed or brewers' dried grain. Occasionally, some persons become so enthusiastic about the nutritive merits of pasture that they conclude it is fully the equivalent of a protein-rich concentrate. This is a considerable exaggeration.

In two important respects the best of pasture differs decidedly from a high-grade concentrate ration. This is in the percentage of fiber (fiber is undigestible and has no feed value) and consequently in the TDN or net energy. Lush pasture will usually contain 18 to 20 percent fiber compared to approximately two percent fiber in ground corn (when both are dried to the same dry matter content.)<sup>1</sup> Since it is impossible to balance rations for grazing animals, energy, vitamins and minerals should always be made available. To insure that the animals' nutrient requirements are met during these upcoming months, we recommend that you consider MOPRO 16% Liquid Protein fed free choice.

MOPRO 16% Liquid Protein is a High Energy Feed which has been specifically designed to economically carry more cattle per acre while increasing gains on pasture without grain. Our stable guaranteed vitamin and mineral package has proven helpful in the prevention of pinkeye, thrush, and ringworm while improving general herd health and conception rates. Good pasture along with MOPRO 16% Liquid Protein supplies the most economical feeding program for grazing animals during the growing season.

<sup>1</sup> Feeds & Feeding 9th Morrison p165

Manufactured By

FURMAN E. HENDRIX, INC.

MANUFACTURERS OF  
MOPRO &  
AGSTAR  
LIQUID  
FEEDS



DISTRIBUTORS OF  
REFINERS  
CANE  
MOLASSES  
C.M.S.

2115 WHITE HALL RD.  
WHITE HALL MD. 21161  
(301) 343-0343

TELEPHONE COLLECT FOR NEAREST DEALER  
49 YEARS EXPERIENCE IN FEED LIQUIDS