

### Student gets award

ATLANTA, Ga. — A University of Delaware student is among six outstanding graduate students in soil and plant science who have been chosen to receive fellowship awards from the Potash & Phosphate Institute.

The Delaware winner is Philip M. Jardine, a native of Delaware. He received the American Society of Agronomy outstanding senior award for the 1981 academic year and graduated with distinction and cum laude from the University of Delaware. He is continuing work toward a Ph. D. in soil chemistry.

His research program seeks better understanding of potassium-calcium exchange in heterogeneous soil systems.

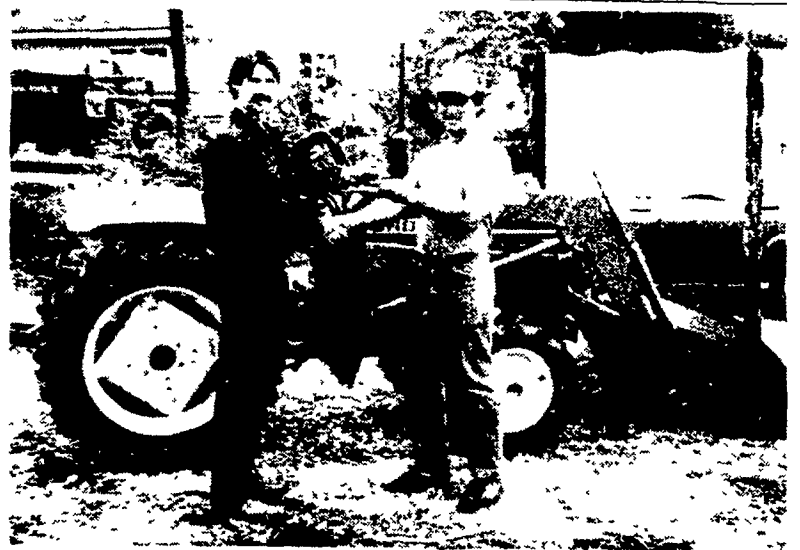
### Co-op delivers 1st tractor

SHIPPENSBURG — The Cumberland Valley Cooperative Farm Service has delivered the first utility size Ford 1000 series compact tractor to Rockwell Landscaping Inc., R6, Shippensburg. CVC is the only Ford dealer in the Cumberland Valley, extending from Mechanicsburg, Pa. to Hagerstown, Md.

Cumberland Valley Cooperative's Ford tractor line

includes five compact new diesels, ranging from 13 to 30 horsepower. The tractors are ideal for cleanup chores, and feature a sturdy front-end loader matched to the model selected.

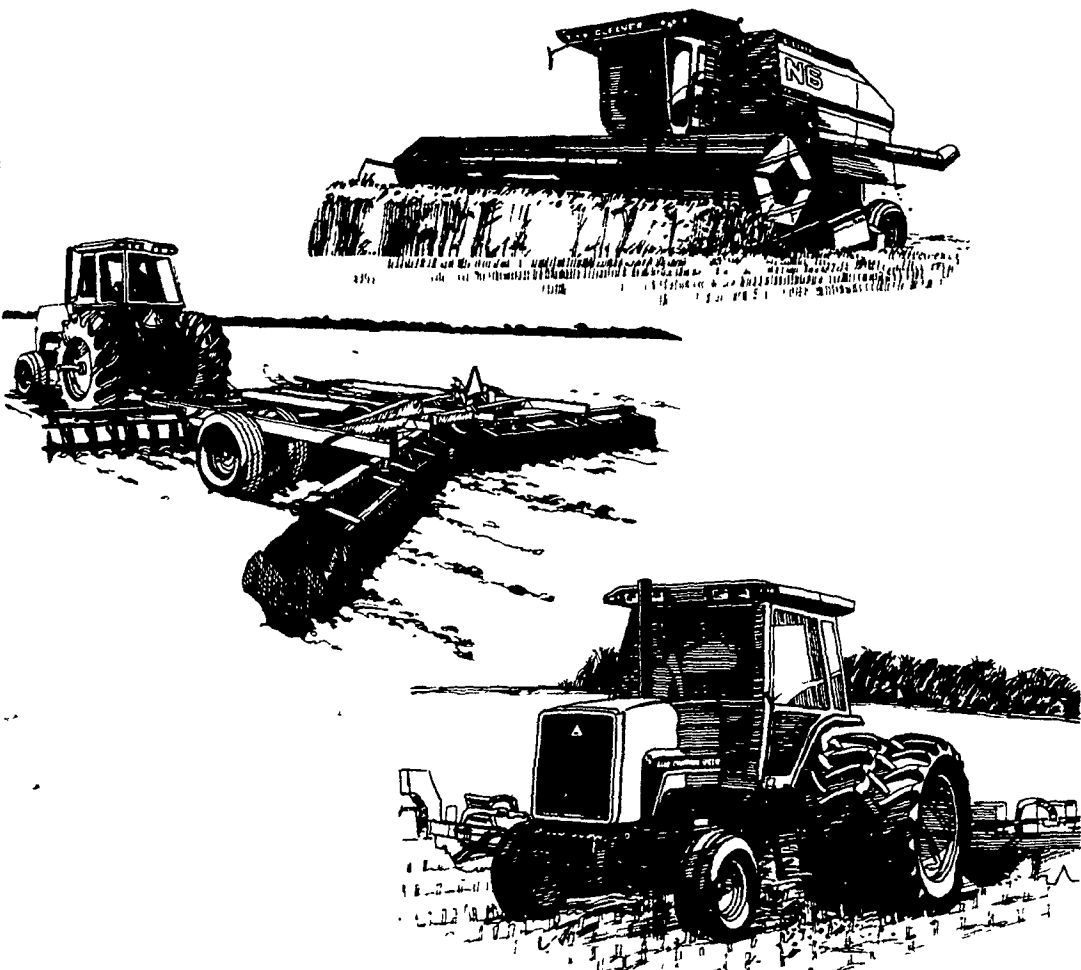
They have built-in hydraulics, three point hitch, power take-off, ten or twelve speed transmission and differential lock — all standard equipment. Optional four-wheel drive is available.



John E. Crouse, left, manager of CVC Farmservice, hands keys to new Ford 1000 series compact tractor to Stewart Rockwell, manager of landscaping firm.



**NEED MORE ROOM?**  
Read The **Classified Real Estate Ads**



### IF ITS A REAL DEAL YOU WANT WITH BIG DISCOUNTS YOU CAN USE NOW - SEE US!

No matter how you want to buy - Low Cost Financing - 9.9% 5 Year Lease/Ownership "Safe Harbor Leasing" - Finance Waiver - Or Straight Out Cash Purchase With Big Discounts - We Have A Plan For You. You Can Get The Discounts NOW And Don't Have To Wait And Spend It On Additional Equipment.

### SEE THESE ALLIS CHALMERS DEALERS

**MARSHALL MACHINERY**  
Honesdale, Pa.  
717-729-7117

**AGRONOMICS, INC.**  
Factoryville, Pa.  
717-945-3933

**B. EQUIPMENT, INC.**  
Waynesboro, Pa.  
717-762-3193

**B & R FARM EQ.**  
Beavertown, PA  
717-658-7024

**DOTTERER & KOLESAR, INC.**

Mill Hall, Pa.  
717-726-3471

**PETERMAN FARM EQUIP.**  
Carlisle, Pa.  
717-249-5338

**NICHOLS FARM EQUIP.**  
Bloomsburg, Pa.  
717-784-7731

**MECKLEY'S LIMESTONE PROD.**  
Herndon, Pa.  
717-758-3915

**AG-IND. EQ., INC.**  
Rising Sun, Md.  
301-398-6132

**AIRVILLE EQUIPMENT, INC.**  
Airville, Pa.  
717-862-3358

**B.H.M. FARM EQUIP., INC.**  
Annville, Pa.  
717-867-2211

**ROY H. BUCH, INC.**  
Ephrata, Pa.  
717-859-2441

**GRUMELLI'S FARM SERVICE**  
Quarryville, Pa.  
717-786-7318

**SHARTLESVILLE FARM SERV.**  
Hamburg, Pa.  
215-488-6574

**JOHN W. SAUMS & SONS INC.**  
Flemington, N.J.  
201-782-4242

**POWER PRO EQUIP. CO.**  
Lewistown, Pa.  
717-248-4569

**C.J. WONSIDLER BROS.**  
Quakertown, Pa.  
215-536-7523

**C.J. WONSIDLER BROS.**  
Oley, Pa.  
215-987-6257

**L.H. BRUBAKER, INC.**  
Lancaster, Pa.  
717-397-5179

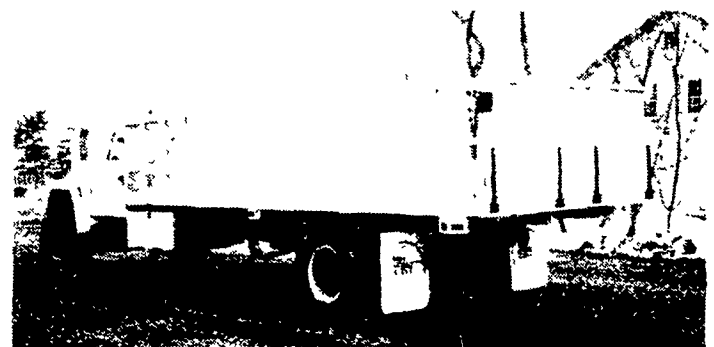
**CANYON IMPLEMENTS INC.**  
Manfield, Pa.  
717-724-2731

Better by Design  
**ALLIS-CHALMERS**

\* Manufacturer's estimated maximum observed PTO horsepower at rated engine speed.  
\*\* When Financed through Allis Chalmers Credit Corp.



Manufacturer of  
**ALL ALUMINUM TRUCK BODIES**  
Livestock, Grain and Bulk Feed



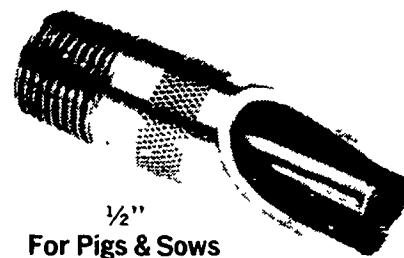
Aluminum Grain Body

Distributor of **TIMPT** Refrigerated Trailers  
**Sales & Service**  
Blue Ball, Pa. 717-354-4971

## SPECIAL SALE

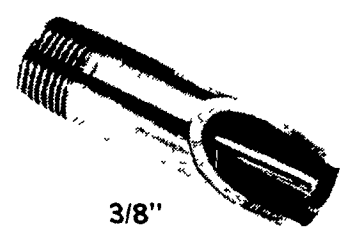
**LOW-COST, Trouble free Nipple Drinkers!**

Easy to clean, Easy to change



1/2" For Pigs & Sows

**\$3.00** ea.



3/8" For Baby Pigs

**\$2.50** ea.

### ONE-PIECE BODY

Solid Stainless Steel construction, no tubes, sleeves or inserts. Smooth Finish.

- Easily Removable Screen Holder
- Brass Orifice
- Heavier Springs - No More Breaking of Springs

SWINE & POULTRY SYSTEMS SPECIALISTS  
**FARMER BOY AG. INC.**  
457 E. MAIN AVE MYERSTOWN, PA 17067 PH 717-866-7565  
BEST IN DESIGN, PRICE AND EXPERIENCE