

# Va. market summary & sale reports

Direct market reports provided  
by Va. Dept. of Agriculture  
in cooperation with USDA

## Virginia Auction Summary

June 24-30  
Report supplied by VDA  
Total of Va. Weekly Auction Receipts: 3,358.  
TREND: Steady to \$3.00 lower. \$1.00 to \$2.00 lower and occasionally \$3.00 lower.  
Auctions included: Richmond, Southampton, Smithfield.  
STEERS: Medium 1 300-500 lbs. 52.75-60.50; 500-700 lbs. 55.00-59.50.  
HEIFERS: Medium 1 300-500

lbs. 45.50-53.50; 500-700 lbs. 44.00-48.00.

## Northern, Va. Auction Summary

June 24-30  
Auctions included: Rockingham, Fredericksburg, Front Royal, Charlottesville, Shenendoah, Madison, Winchester, Staunton, Marshall.  
STEERS: 300-500 lbs. Medium 1 56.00-68.00; Large 1 63.00-73.00; Small 1 52.50-65.00; 500-700 lbs. Medium 1 56.50-59.50; Large 1 65.00-70.00; Small 1 55.00-62.00; 700-

1000 lbs. Medium 1 54.00-65.50; Large 1 58.25-63.50.  
HEIFERS: 300-500 lbs. Medium 1 47.00-57.00; Large 1 55.00-60.50; Small 1 45.00-55.00; 500-700 lbs. Medium 1 48.00-59.00; Large 1 53.00-58.00; 700-900 lbs. Medium 1 54.00-59.00.

## Southwest Va. Auction Summary

June 24-30  
Auctions included: Tristate, Narrows, Lynchburgh, Hollins & Wytheville.  
STEERS: 300-500 lbs. Medium 1 55.00-67.00; Large 1 57.50-68.00; Small 1 51.00-63.00. 500-700 lbs. Medium 1 57.00-66.50; Large 1 58.75-66.25; Small 1 49.50-60.50. 700-1000 lbs. Medium 1 57.00-63.50; Large 1 59.00-61.00.  
HEIFERS: 300-500 lbs. Medium 1 48.00-57.00; Large 48.00-56.00; Small 1 45.00-53.50. 500-700 lbs. Medium 1 45.00-56.00; Large 1 49.50-56.00. 700-900 lbs. Medium 1 43.50-53.50; Large 1 46.50-54.50.

## Slaughter Cattle

Orange, Va.  
Wednesday, June 30  
Receipts: 80.  
Choice steers U.S. 2 & 3 1050-1250 lbs. 68.00-69.50; Choice 2 & 4 1000-1300 lbs. 64.00-67.00; Choice 2 & 3 1000-1200 lbs. 61.00-63.00.  
Good Holstein 1 & 3 1100-1500 lbs. 54.00-55.75.  
Choice Heifer 2 & 3 800-900 lbs. 63.00; Good heifer 2 & 3 850-1100 lbs. 52.50.

## Slaughter Cattle

Rockingham, Va.  
Thursday, June 24  
Receipts: 95.  
Choice Steers 1130-1275 lbs. 66.00-68.50; Good steers 900-1100 lbs. 60.00-64.00.  
Choice Heifer 800-900 lbs. 58.00-63.75; Choice 900-1000 lbs. 62.75-65.25; Good 800-1100 lbs. 55.50-57.50.

## Slaughter Lambs

Dublin, Va.  
Friday, June 25  
Receipts: 1,536.  
High Choice & Prime 95-125 lbs. 56.00-57.25; Choice 85-125 lbs. 53.00-54.50.

## Feeder Pigs

Blackstone, Va.  
Monday, June 28  
FEEDER PIGS: Receipts 233.  
US 1 & 2: 30-39 lbs. 128.00; 40-49 lbs. 122.00; 50-59 lbs. 104.00; 60-69 lbs. 88.00; 70-84 lbs. 74.00.  
US 3: 30-39 lbs. 128.00; 40-49 lbs. 105.00; 50-59 lbs. 104.00; 60-69 lbs. 84.00; 70-84 lbs. 71.00; 85-99 lbs. 70.00.  
Utility & 4: 30-39 lbs. 70.00; 40-49 lbs. 65.00; 60-69 lbs. 60.00.

## Feeder Pigs

Cortland, Va.  
Thursday, June 24  
FEEDER PIGS: Receipts 565.  
US 1 & 2: 30-39 lbs. 129.00; 40-49 lbs. 120.00; 50-59 lbs. 114.00; 60-69 lbs. 105.00; 70-84 lbs. 92.00; 85-88 lbs. 94.00.  
US 3: 30-39 lbs. 127.00; 40-49 lbs. 113.00; 50-59 lbs. 116.00; 60-69 lbs. 105.00; 70-84 lbs. 91.00; 85-99 lbs. 94.00.  
UTILITY & 4: 30-39 lbs. 90.00; 40-49 lbs. 91.00; 70-84 lbs. 88.00.

## Zeller Agri Services

High Pressure  
Washing & Disinfecting  
Poultry Houses, Hog Buildings,  
Calf Barns  
Mite & Beetle Spraying  
Complete Ventilation &  
Security Alarm Specialists  
We Now Have 2 Washer Units  
to Serve You Better  
RD 1, Elizabethville, Pa. 17023  
717-362-3860

## NOW!

### Alfalfa

- Spray to insure against Leaf Hopper damage.
- Fertilize for maximum yields.

### Tobacco

- Complete tobacco spraying services.

### Soil Test

- Now on grain stubble. Apply needed lime.

Call Us for ALL  
of the Above SERVICES

BULK BLENDS  
**MASTER FARMER**  
ANHYDROUS AMMONIA

**ORGANIC  
PLANT  
FOOD CO.**

2313 NORMAN ROAD,  
LANCASTER, PA. 17601  
PHONE: 717-397-5152

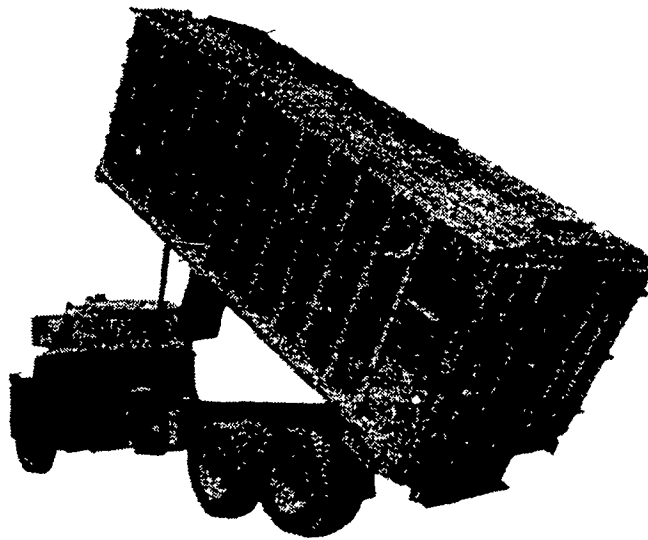
Summer Hours:  
Weekdays 7:30 - 4:00  
Closed Saturdays July and August

## Introducing The All NEW LITE-WAY BULK/BAG FEED & GRAIN BODIES

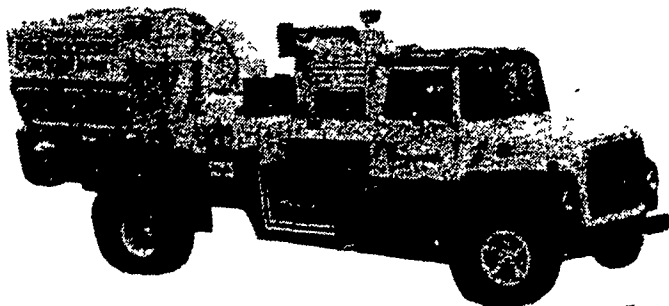
Canada's Best

### Featuring:

- All aluminum construction.
- Trapezoidal long-sills.
- No cross sills.

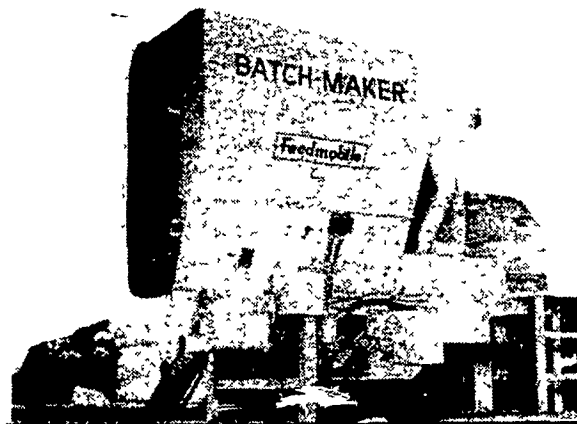


**LOW COST PLUS 8% FACTORY REBATE**



### NEW ROLL-FEEDMOBILE 102

The best in mobile feed processing for more than 30 years - now completely redesigned to make it even better!



### BATCHMAKER

New texturizer patented 20" hammermill processes ear corn, whole bales, grain and high moisture material.

Prices start at \$19,500

Operators can earn a profit from service molasses, and supplements of up to \$17.50/Batch or an Annual Net Profit before taxes of up to \$65,000! (Recession Proof)

Call For Quotes On New Or  
Used Equipment Or Service  
For Your Existing Equipment.

LEASE PLANS AVAILABLE

**Feedmobile Inc.**

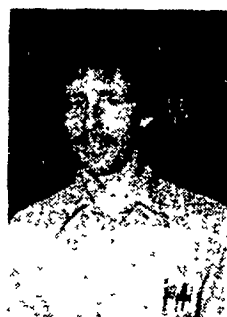
SALES • PARTS • SERVICE  
727 Furnace Hills Pike, Lititz, PA 17543  
(717) 626-2680



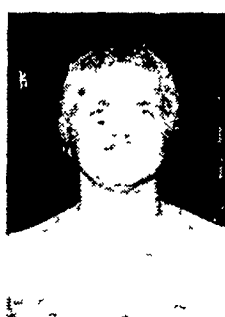
Larry Weaver  
SALES



Linda High  
OFFICE



Doug Roush  
SERVICE



John High  
SERVICE